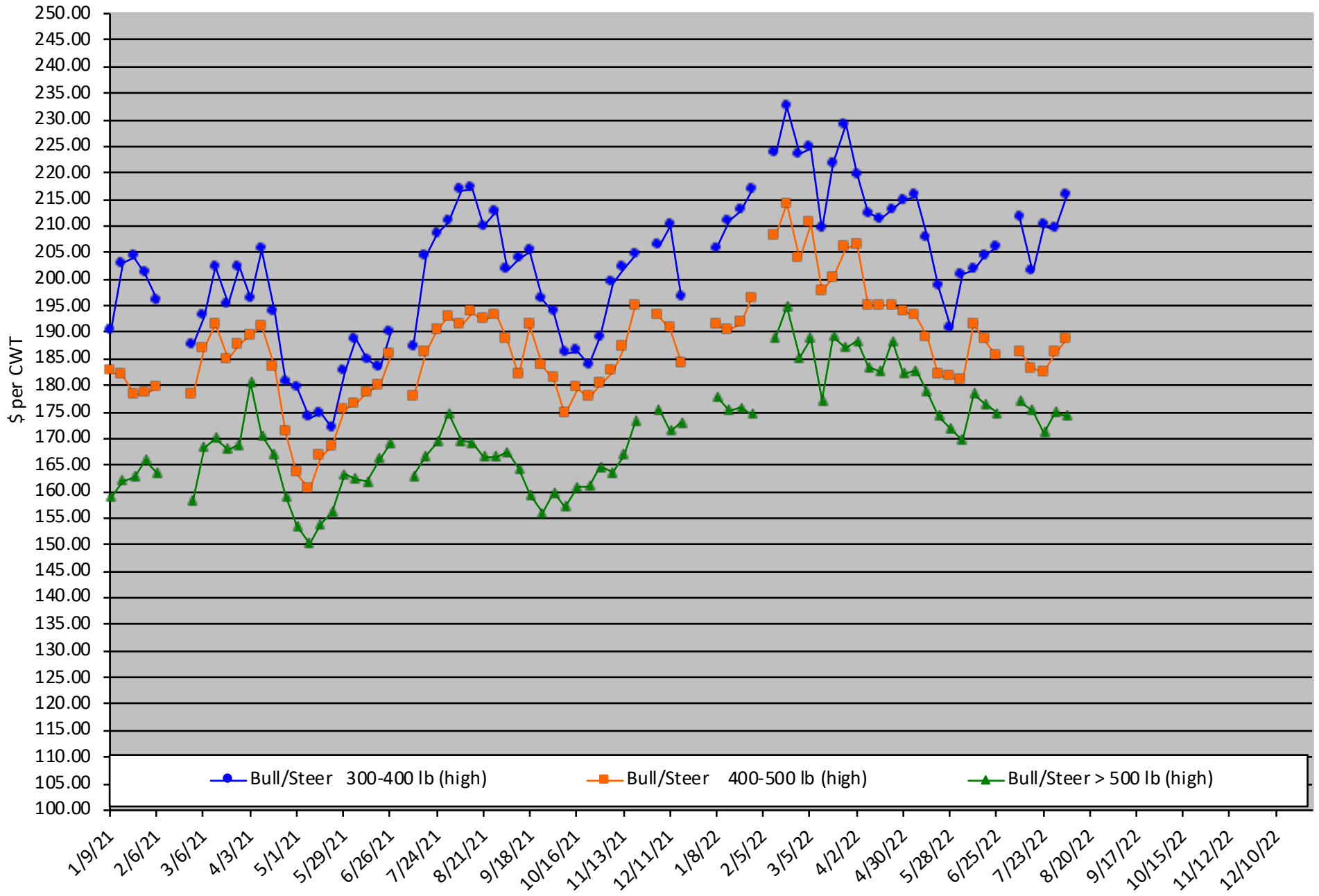


Calf Price Trends

Trend of the Highest Price Reported for Various Weight Calves, Average of 6 East & Central Texas Livestock Auctions

For a weekly email copy of this chart please subscribe at <http://beeffax.tamu.edu> or contact a Texas A&M AgriLife County Extension Agent

Chart created by Dr. Jason Banta, Extension Beef Cattle Specialist

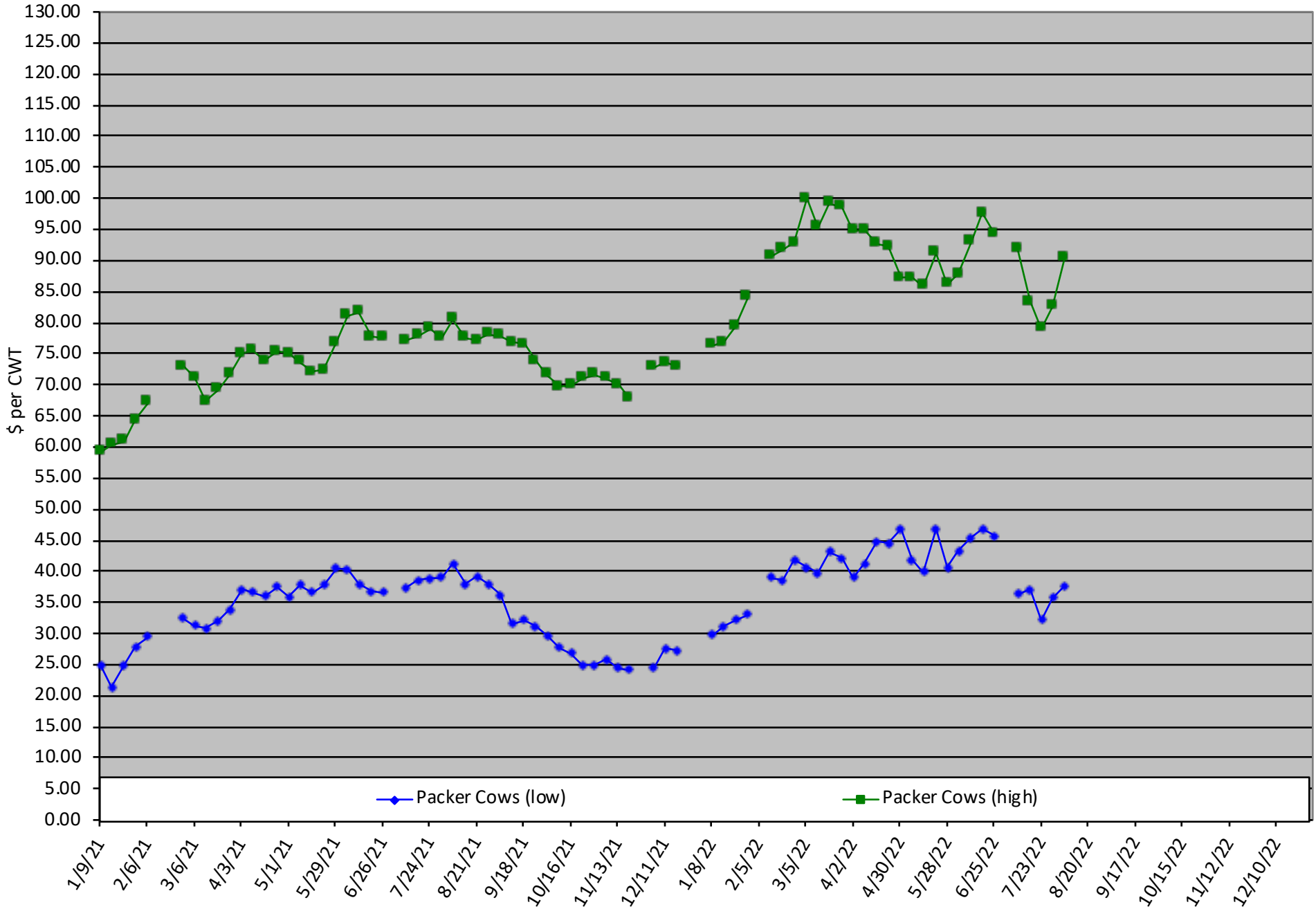


Packer Cow PriceTrends

Trend of High and Low Prices Reported for Packer Cows, Average of 6 East & Central Texas Livestock Auctions

For a weekly email copy of this chart please subscribe at <http://beeffax.tamu.edu> or contact a Texas A&M AgriLife County Extension Agent

Chart created by Dr. Jason Banta, Extension Beef Cattle Specialist



Reduce Winter Feeding with Stockpiled Forage and Winter Pasture

Online Program: Watch from Home and Save Gas

Friday, August 26, 2022

Would you prefer to feed hay for 60 days? 100 days? or 150 days?
Here's an opportunity to learn how to significantly reduce your hay feeding needs.

Nitrogen fertilizer prices have decreased about 30% from recent highs and continue to trend lower.
Winter pasture could be a good option to greatly reduce winter feeding costs.

Program presented by:

Drs. Vanessa Corriher-Olson and Jason Banta

Topics include:

- Stockpiled forage: management and utilization
- Acres needed per cow for stockpiled forage and winter pasture
- Cool-season forages and variety selection
- Establishment and fertilization
- Monthly and seasonal forage production potential
- Appropriate mineral supplementation
- Estimated costs



Register by August 25th at 12:00PM: \$35/person

- Electronic copies of slides and other program materials will be available prior to the program
- All sessions will be recorded and available for later viewing for those that register

The program will be divided into 3 sessions to allow attendees to have a break between sessions

9:00 - 11:00 AM Part 1
12:30 - 2:30 PM Part 2
4:00 - 6:00 PM Part 3

Register online at:

<https://tamu.estore.flywire.com/products/reduce-winter-feeding-with-stockpiled-forage-and-winter-pasture-1>

For more information on this program please contact Michelle Sensing @ 903-847-0611.

Ag in the Evening Virtual Program

Brought to you by the Texas A&M AgriLife Extension Offices of:
Houston, Gregg & Tyler Counties

June 14, 2022

[Forage Insect Control](#)

Zoom Meeting

Speaker Dr. Vanessa

July 12, 2022

[Cattle handling](#)

Zoom Meeting

Speaker: Dr. Ron Gill

August 9, 2022

[Fencing for cattle operations - Field fence, barbwire, and electric](#)

Zoom Meeting

Speaker: Dr. Jason Banta



All Programs start
at 6pm
Click [TITLE](#) of each