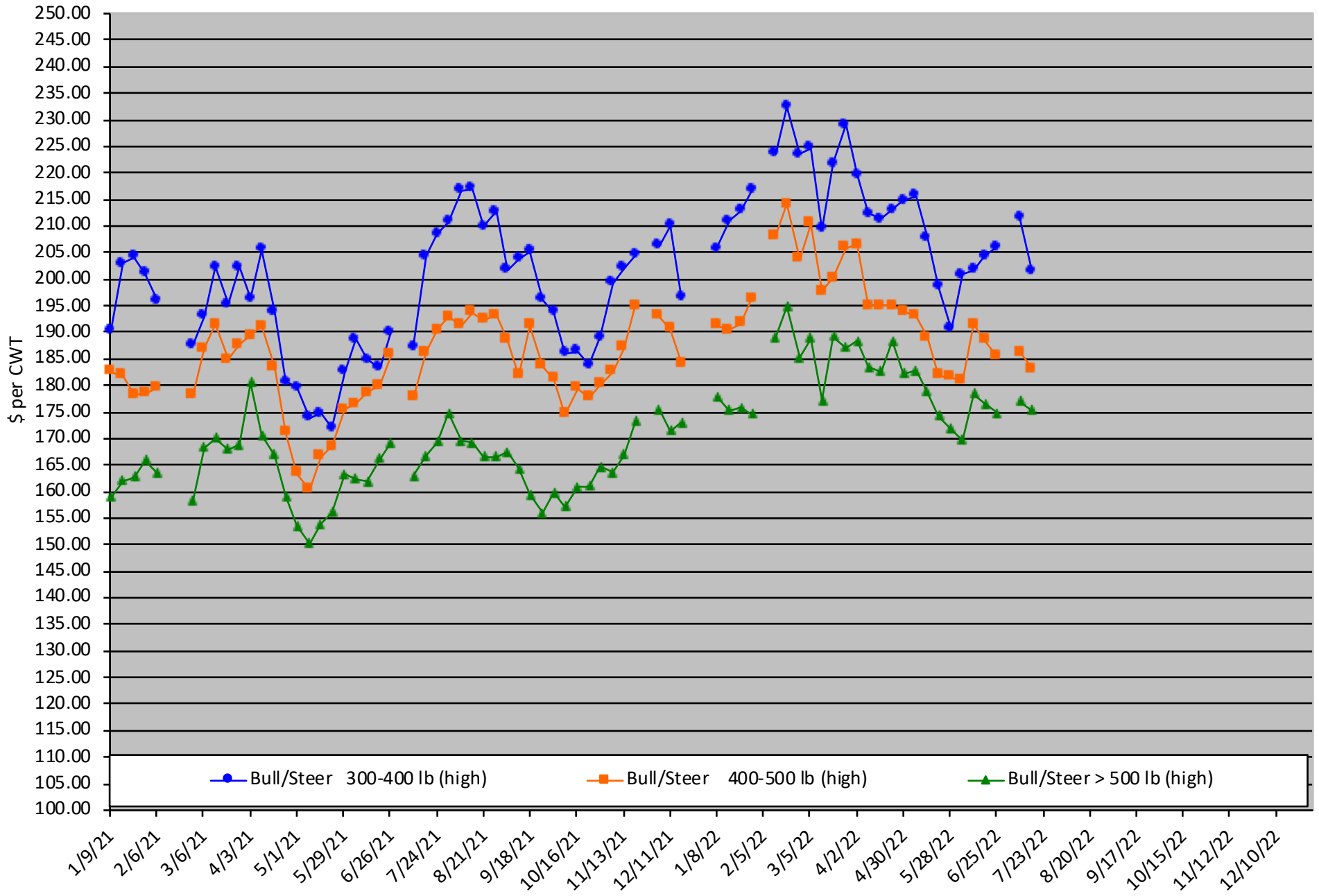


# Calf Price Trends

Trend of the Highest Price Reported for Various Weight Calves, Average of 6 East & Central Texas Livestock Auctions

For a weekly email copy of this chart please subscribe at <http://beeffax.tamu.edu> or contact a Texas A&M AgriLife County Extension Agent

Chart created by Dr. Jason Banta, Extension Beef Cattle Specialist

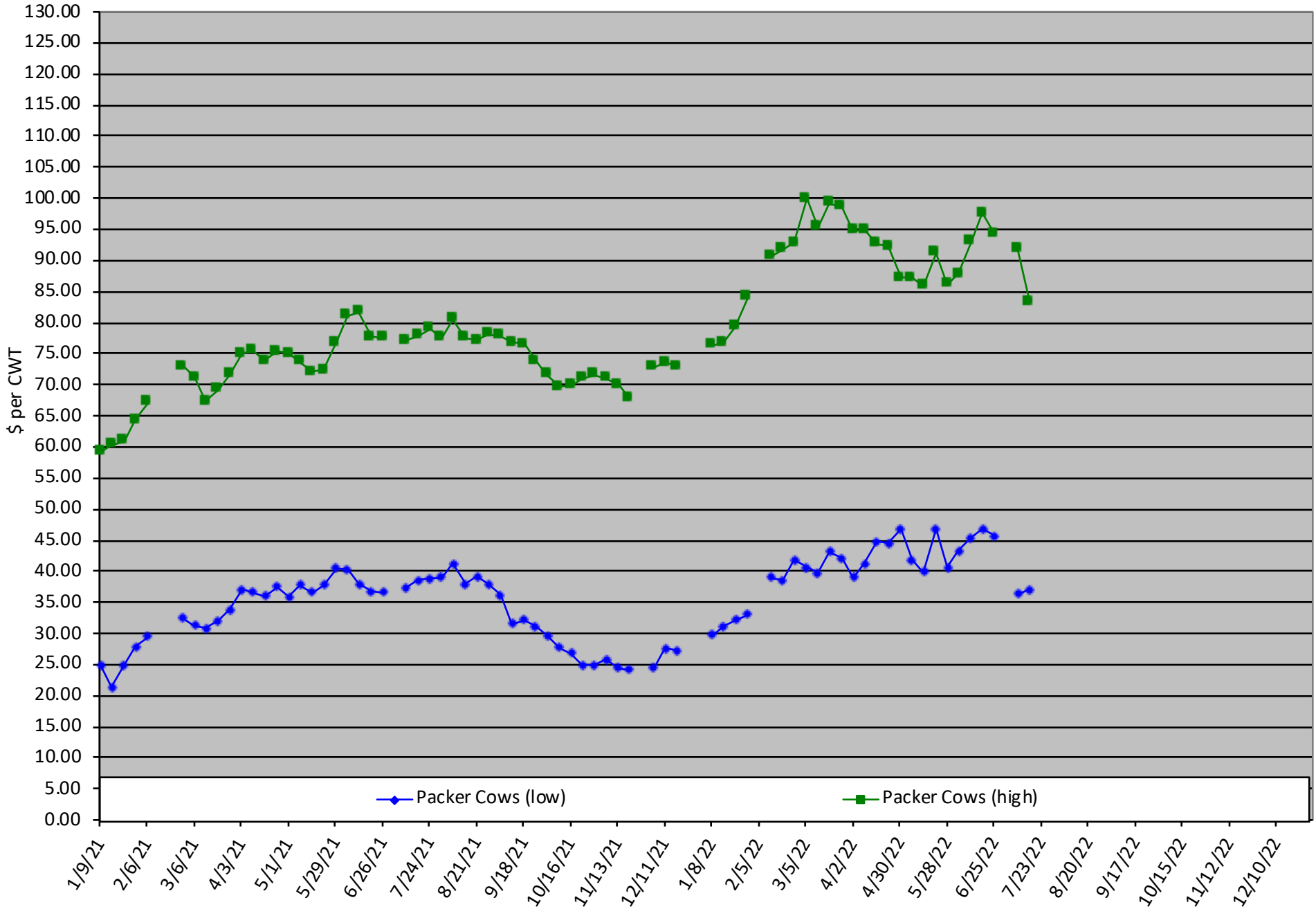


# Packer Cow PriceTrends

Trend of High and Low Prices Reported for Packer Cows, Average of 6 East & Central Texas Livestock Auctions

For a weekly email copy of this chart please subscribe at <http://beefax.tamu.edu> or contact a Texas A&M AgriLife County Extension Agent

Chart created by Dr. Jason Banta, Extension Beef Cattle Specialist



# Reduce Winter Feeding with Stockpiled Forage and Winter Pasture

## Online Program: Watch from Home and Save Gas

Friday, August 26, 2022

Would you prefer to feed hay for 60 days? 100 days? or 150 days?  
= your hay feeding needs.

Nitrogen fertilizer prices have decreased about 30% from recent highs and continue to trend lower.  
Winter pasture could be a good option to greatly reduce winter feeding costs.

### Program presented by:

Drs. Vanessa Corriher-Olson and Jason Banta

### Topics include:

- < Stockpiled forage: management and utilization
- < Acres needed per cow for stockpiled forage and winter pasture
- < Cool-season forages and variety selection
- < Establishment and fertilization
- < Monthly and seasonal forage production potential
- < Appropriate mineral supplementation
- < Estimated costs



### Register by August 25<sup>th</sup> at 12:00PM: \$35/person

- < Electronic copies of slides and other program materials will be available prior to the program
- < All sessions will be recorded and available for later viewing for those that register

### The program will be divided into 3 sessions to allow attendees to have a break between sessions

9:00 - 11:00 AM Part 1  
12:30 2:30 PM Part 2  
4:00 6:00 PM Part 3

### Register online at:

<https://tamu.estore.flywire.com/products/reduce-winter-feeding-with-stockpiled-forage-and-winter-pasture-1>

For more information on this program please contact  
Michelle Sensing @ 903-847-0611.

## Ag in the Evening Virtual Program

Brought to you by the Texas A&M AgriLife Extension Offices of:  
Houston, Gregg & Tyler Counties

June 14, 2022

[Forage Insect Control](#)

Zoom Meeting

Speaker Dr. Vanessa

July 12, 2022

[Cattle handling](#)

Zoom Meeting

Speaker: Dr. Ron Gill

August 9, 2022

[Fencing for cattle operations - Field fence, barbwire, and electric](#)

Zoom Meeting

Speaker: Dr. Jason Banta



All Programs start  
at 6pm  
Click [TITLE](#) of each