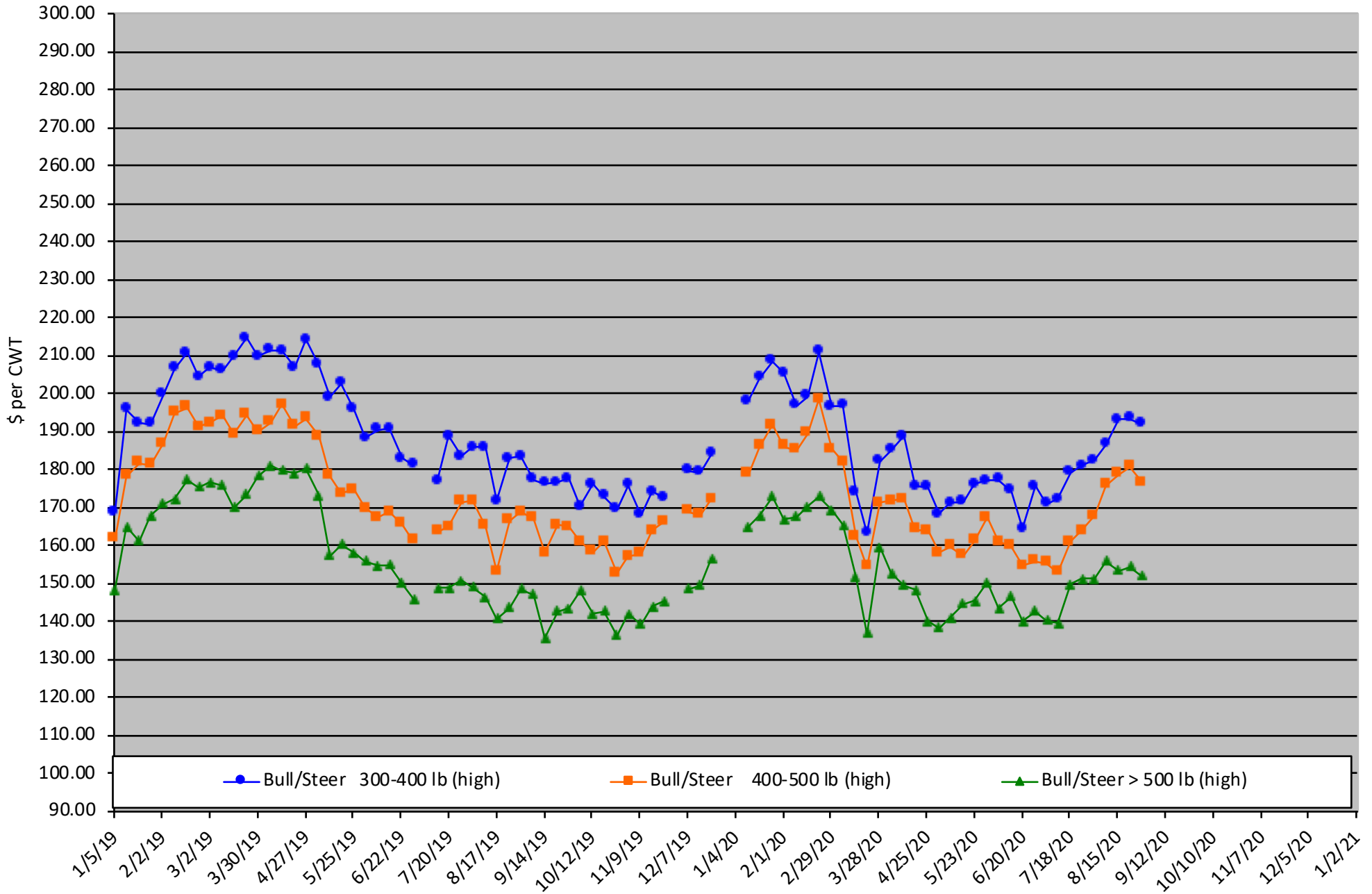


Calf Price Trends

Trend of the Highest Price Reported for Various Weight Calves, Average of 6 East & Central Texas Livestock Auctions

For a weekly email copy of this chart please subscribe at <http://beeffax.tamu.edu> or contact a Texas A&M AgriLife County Extension Agent

Chart created by Dr. Jason Banta, Extension Beef Cattle Specialist

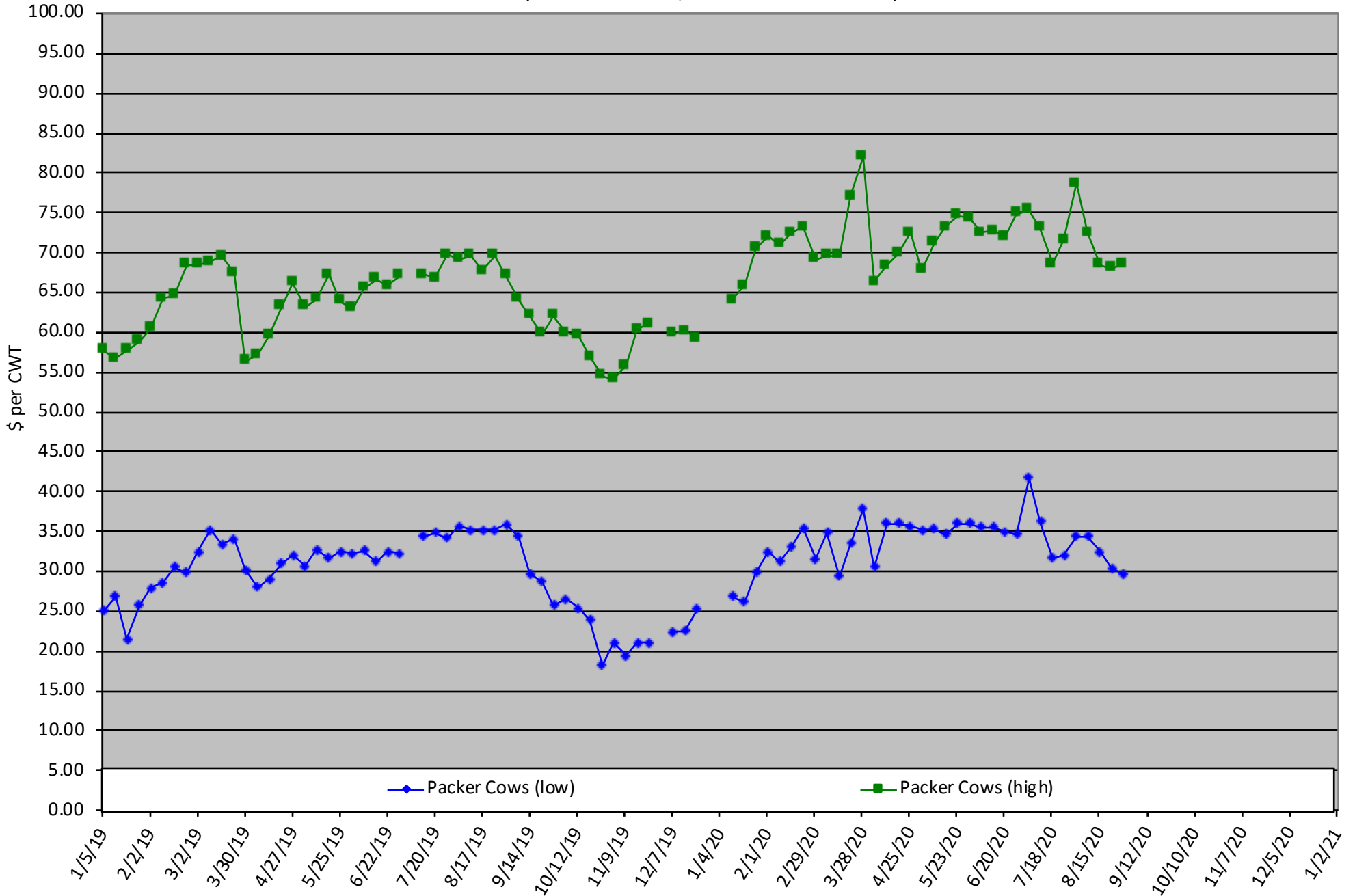


Packer Cow PriceTrends

Trend of High and Low Prices Reported for Packer Cows, Average of 6 East & Central Texas Livestock Auctions

For a weekly email copy of this chart please subscribe at <http://beeffax.tamu.edu> or contact a Texas A&M AgriLife County Extension Agent

Chart created by Dr. Jason Banta, Extension Beef Cattle Specialist



Ag in the Evening

Program Series

Brought to you by the Texas A&M AgriLife Extension Offices of:
Houston County, Gregg County, Tyler County

September 8

Weaning Strategies & Feeding Considerations

Zoom Meeting

<https://agrilife.zoom.us/meeting/register/tjwvcumrrT0jGNA4ZHtC8srapi1D9IqWcK3L>

SPEAKER:
Dr. Jason Banta

September 22

Alternative Fertilizers

Zoom Meeting

https://agrilife.zoom.us/meeting/register/tJcucu6vrT0sGNVHuchYvgrjAweCNPQDFJ_A

SPEAKER:
Dr. Vanessa Olson

October 6

General Bull Selection

Zoom Meeting

<https://agrilife.zoom.us/meeting/register/tj0td-2hrT4uEtGiXk8asdRI1Spt-1hLBwoCZ>

SPEAKER:
Dr. Jason Banta

October 20

Common Forage Issues/Questions

Zoom Meeting

<https://agrilife.zoom.us/meeting/register/tjYocuuqhTluHdVSvnkK3HtlrjWIHMrvzGtT>

SPEAKER:
Dr. Vanessa Olson

**All Programs
Start at 6pm**

Click the
links to
register for
each

TEXAS A&M
AGRILIFE
EXTENSION

Educational programs of the Texas A&M AgriLife
race, color, sex, disability, religion, age, or national origin, genetic information or veteran status. The Texas A&M University System, U.S. Department of Agriculture, and the County Commissioners Courts of Texas Cooperating. Anyone needing special assistance at an Extension Program should contact the Texas AgriLife Extension Office at 936.544.7502 at least one week prior to the program or event.

Extension Service are open to all people without regard to
race, color, sex, disability, religion, age, or national origin, genetic information or veteran status. The Texas A&M University System, U.S. Department of Agriculture, and the County Commissioners Courts of Texas Cooperating. Anyone needing special assistance at an Extension Program should contact the Texas AgriLife Extension Office at 936.544.7502 at least one week prior to the program or event.