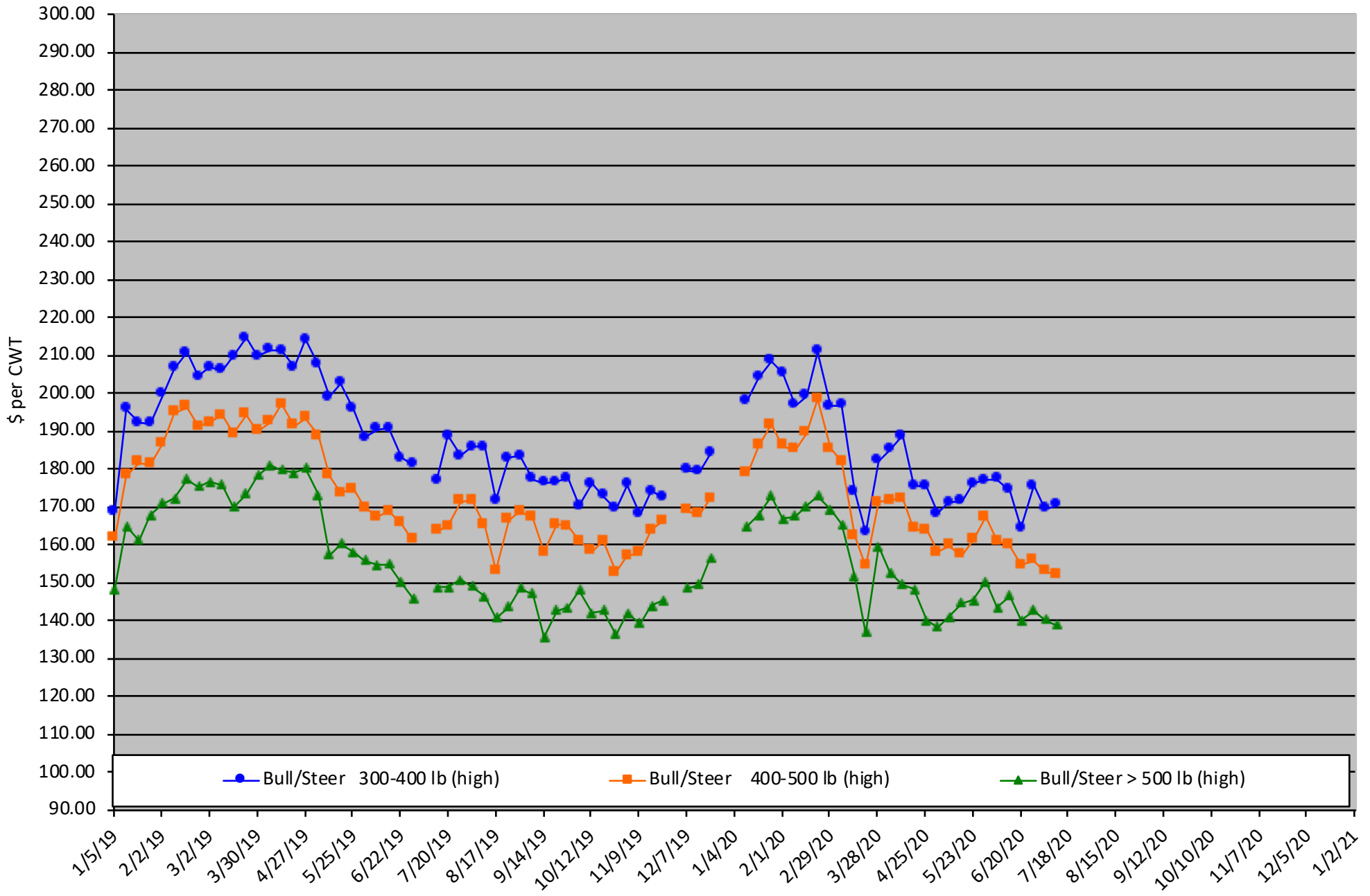


# Calf Price Trends

Trend of the Highest Price Reported for Various Weight Calves, Average of 6 East & Central Texas Livestock Auctions

For a weekly email copy of this chart please subscribe at <http://beeffax.tamu.edu> or contact a Texas A&M AgriLife County Extension Agent

Chart created by Dr. Jason Banta, Extension Beef Cattle Specialist

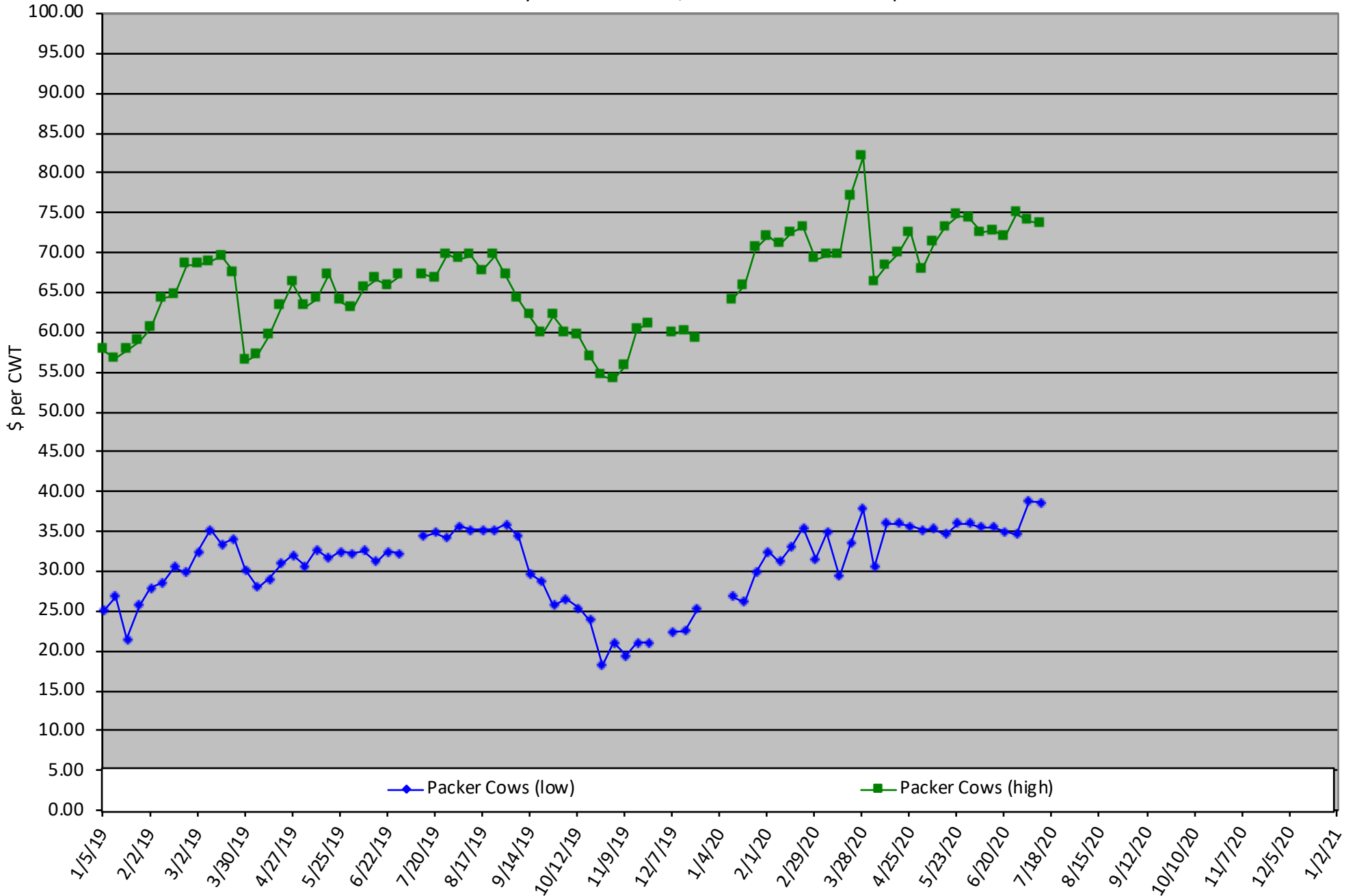


# Packer Cow PriceTrends

Trend of High and Low Prices Reported for Packer Cows, Average of 6 East & Central Texas Livestock Auctions

For a weekly email copy of this chart please subscribe at <http://beeffax.tamu.edu> or contact a Texas A&M AgriLife County Extension Agent

Chart created by Dr. Jason Banta, Extension Beef Cattle Specialist



# Reduce Winter Feeding with Stockpiled Forage and Winter Pasture

## Online Program

Friday, August 21, 2020

Would you prefer to feed hay for 60 days? 100 days?  
or 150 days?

Here's an opportunity to learn how to significantly  
reduce your hay feeding needs.

Program presented by:

Drs. Vanessa Corriher-Olson and Jason Banta

Topics include:

- Stockpiled forage: management and utilization
- How many acres do you need of stockpiled forage and winter pasture?
- Cool-season forages and variety selection
- Establishment and fertilization
- Monthly and seasonal forage production potential
- Appropriate mineral supplementation
- Estimated costs



**Register by August 19<sup>th</sup> at 12:00PM: \$35/person**

- Electronic copies of slides and other program materials will be available prior to the program
- All sessions will be recorded and available for later viewing for those that register

**The program will be divided into 3 sessions to  
allow attendees to have a break between sessions**

9:00 - 11:00 AM Part 1

12:30 - 2:30 PM Part 2

4:00 - 6:00 PM Part 3

**Register online at:**

<https://agriferegister.tamu.edu/pasture>;

or call Extension Conference Services @ 979-845-2604

For more information on this program please contact  
Michelle Sensing @ 903-834-6191.