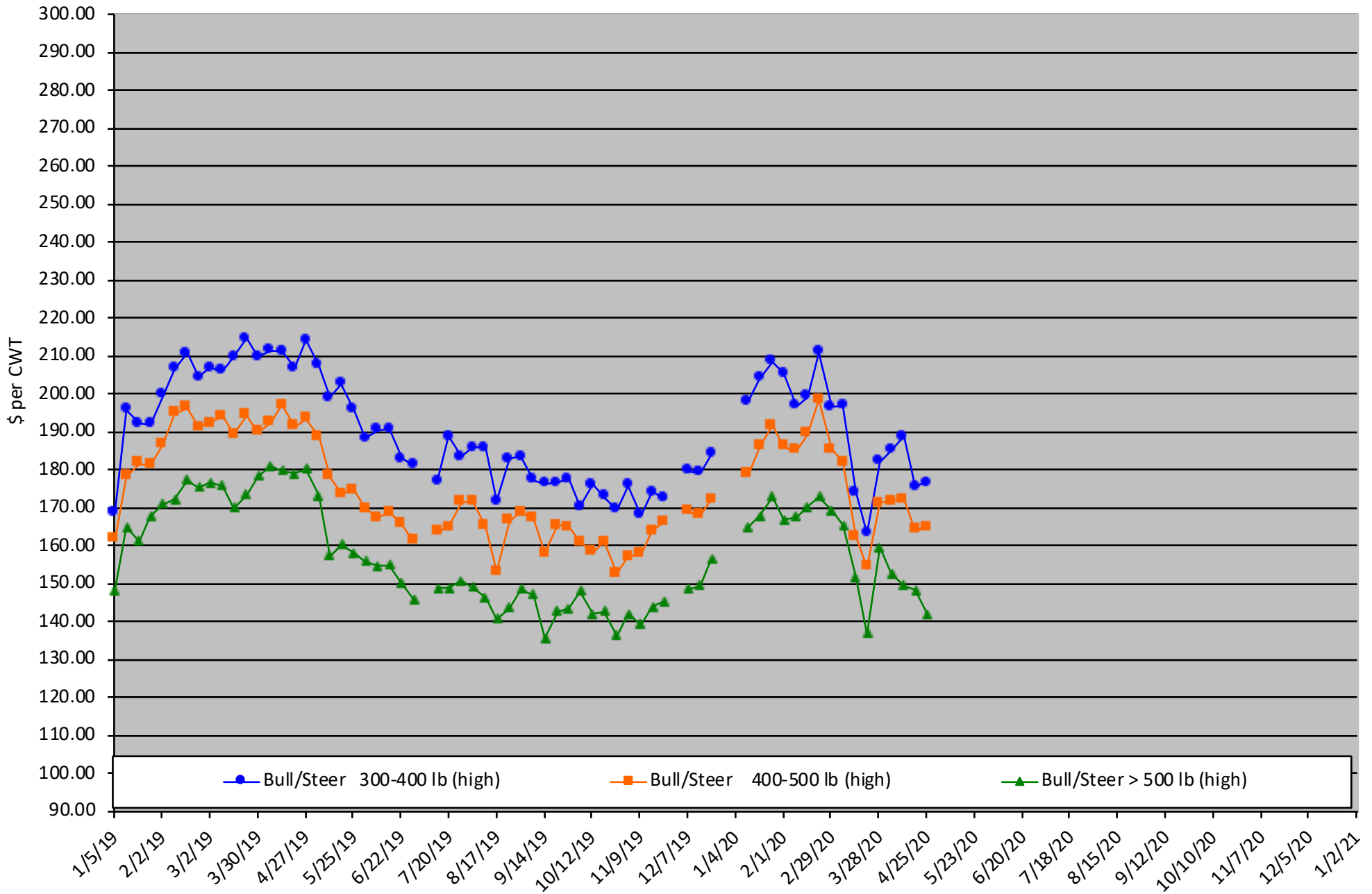


Calf Price Trends

Trend of the Highest Price Reported for Various Weight Calves, Average of 6 East & Central Texas Livestock Auctions

For a weekly email copy of this chart please subscribe at <http://beeffax.tamu.edu> or contact a Texas A&M AgriLife County Extension Agent

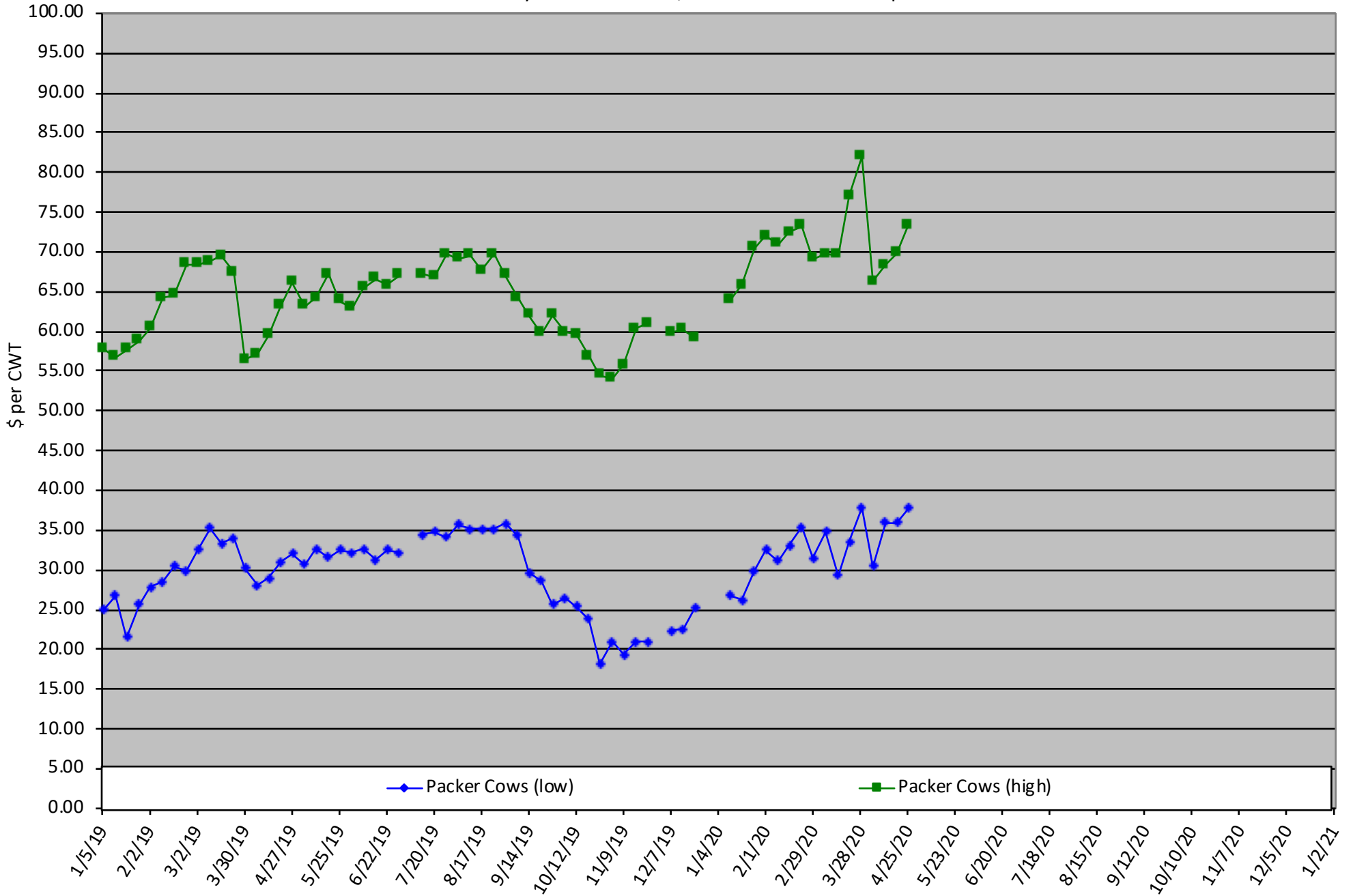
Chart created by Dr. Jason Banta, Extension Beef Cattle Specialist



Packer Cow PriceTrends

Trend of High and Low Prices Reported for Packer Cows, Average of 6 East & Central Texas Livestock Auctions

For a weekly email copy of this chart please subscribe at <http://beeffax.tamu.edu> or contact a Texas A&M AgriLife County Extension Agent
Chart created by Dr. Jason Banta, Extension Beef Cattle Specialist



Ag in the Evening

Program Series

SPEAKER:
Dr. Jason Banta

External Parasite Control in Beef Cattle

Zoom Meeting

[https://agrilife.zoom.us/meeting/register/
tj0scumhqTsvHtDsptVUiFY4iIvHcX8uTPP](https://agrilife.zoom.us/meeting/register/tj0scumhqTsvHtDsptVUiFY4iIvHcX8uTPP)

April 28
6:00 pm

Brought to you by the
Texas A&M AgriLife
Extension Offices of:
Houston County,
Gregg County,
Tyler County

Click the
links to
register for
each
program

Internal Parasite Control & Herd Health of Beef Cattle

Zoom Meeting

[https://agrilife.zoom.us/meeting/register/
tjwqfumvqTgrHNEm7JlDOozVIUctIzeo38Zh](https://agrilife.zoom.us/meeting/register/tjwqfumvqTgrHNEm7JlDOozVIUctIzeo38Zh)

May 5
6:00 pm

TEXAS A&M
AGRILIFE
EXTENSION

Educational programs of the Texas A&M AgriLife Extension Service are open to all people without regard to race, color, sex, disability, religion, age, or national origin, genetic information or veteran status. The Texas A&M University System, U.S. Department of Agriculture, and the County Commissioners Courts of Texas Cooperating. Anyone needing special assistance at an Extension Program should contact the Texas AgriLife Extension Office at 936.544.7502 at least one week prior to the program or event.