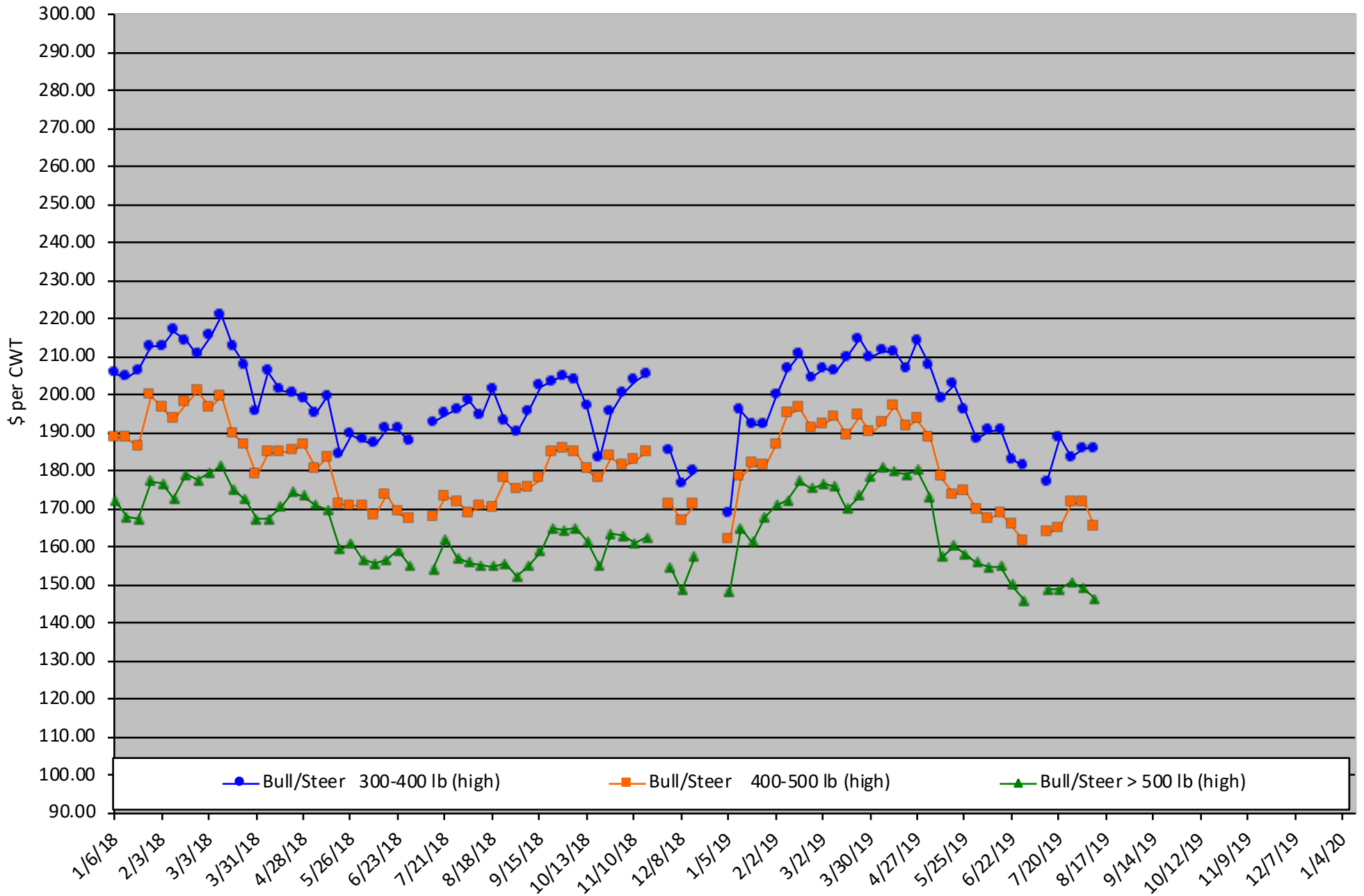


# Calf Price Trends

Trend of the Highest Price Reported for Various Weight Calves, Average of 6 East & Central Texas Livestock Auctions

For a weekly email copy of this chart please subscribe at <http://beeffax.tamu.edu> or contact a Texas A&M AgriLife County Extension Agent

Chart created by Dr. Jason Banta, Extension Beef Cattle Specialist

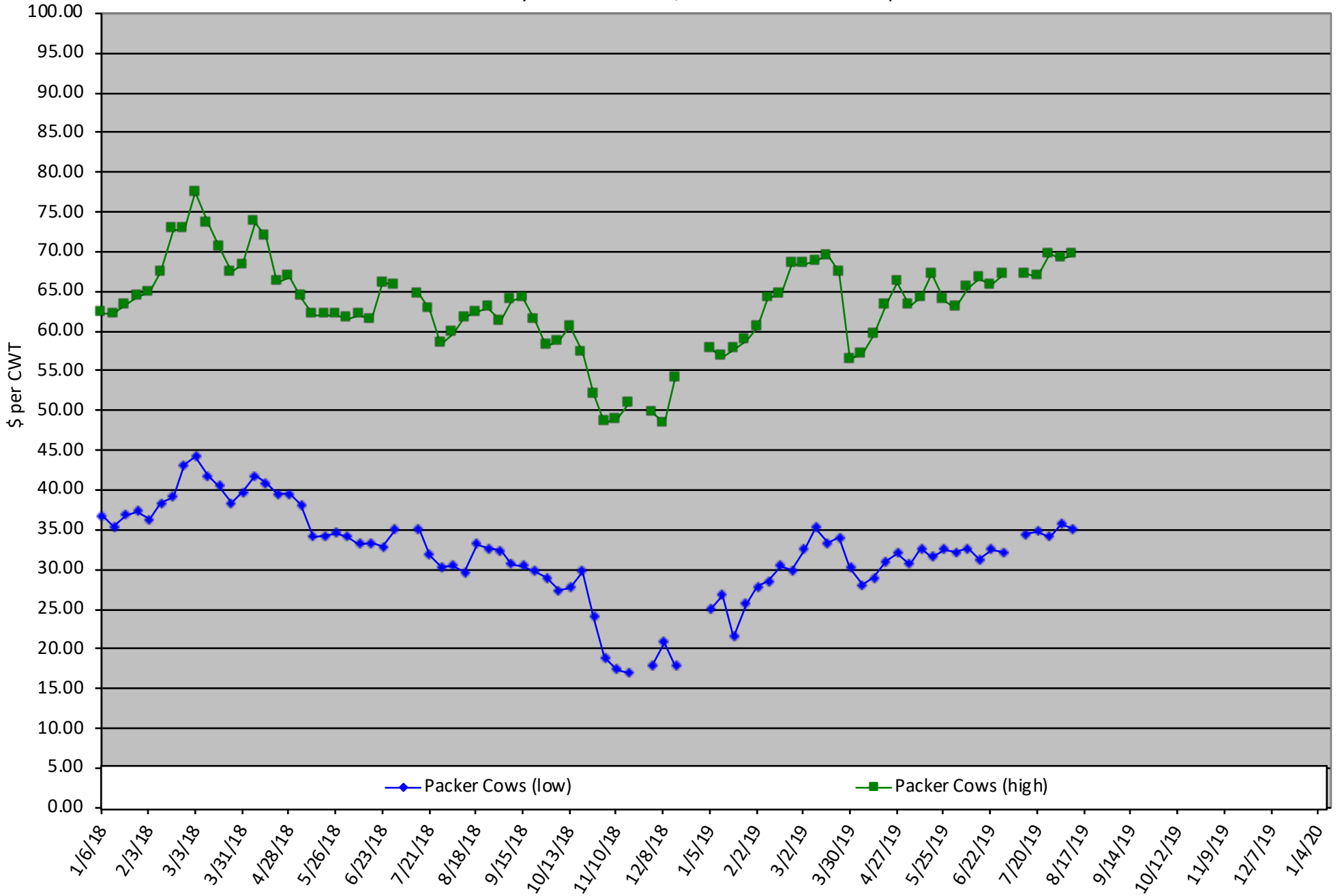


# Packer Cow PriceTrends

Trend of High and Low Prices Reported for Packer Cows, Average of 6 East & Central Texas Livestock Auctions

For a weekly email copy of this chart please subscribe at <http://beeffax.tamu.edu> or contact a Texas A&M AgriLife County Extension Agent

Chart created by Dr. Jason Banta, Extension Beef Cattle Specialist



# BEEF QUALITY ASSURANCE TRAINING

TEXAS A&M  
AGRI LIFE  
EXTENSION



# JOIN US

**MINEOLA CIVIC CENTER**  
**MINEOLA, TEXAS • AUGUST 30, 2019**  
**• FREE LUNCH LUNCH WILL BE SERVED •**

**WHAT:** A Texas Beef Quality Assurance Training covering best management practices to ensure the beef you produce is safe and wholesome. Topics Include:

Residue Avoidance • Vaccine Handling • Proper Injection Technique  
Genetic Selection • Environmental Stewardship • Cattle Handling & Welfare

**WHERE:** Mineola Civic Center

1150 N Newsom Street ♦ Mineola, TX 75773

**WHEN:** Friday, August 30, 2019 ♦ 10:00 AM - 2:30 PM

**HOW:** Please register at [www.texasbeefquality.com](http://www.texasbeefquality.com) or 800-242-7820 ext. 192

Thank you to the following Texas A&M AgriLife Extension offices for hosting this event

Rains County  
903-473-4580

Wood County  
903-763-2924

Van Zandt County  
903-567-4149

# BEEF QUALITY ASSURANCE TRAINING

TEXAS A&M  
AGRI LIFE  
EXTENSION



JOIN US

**NEW BOSTON COMMUNITY CENTER  
NEW BOSTON, TEXAS • AUGUST 29, 2019  
• FREE BEEF DINNER WILL BE SERVED •**

**WHAT:** A Texas Beef Quality Assurance Training covering best management practices to ensure the beef you produce is safe and wholesome. Topics Include:

Residue Avoidance • Vaccine Handling • Proper Injection Technique  
Genetic Selection • Environmental Stewardship • Cattle Handling & Welfare

**WHERE:** New Boston Community Center  
301 NE Front Street ♦ New Boston, TX 75570

**WHEN:** Thursday, August 29 2019 ♦ 5:00 PM - 8:30 PM

**HOW:** Please register at [www.texasbeefquality.com](http://www.texasbeefquality.com) or 800-242-7820 ext. 192

For more information, visit [texasbeefquality.com](http://texasbeefquality.com) or  
call the Bowie County Extension Office at 903-628-6702