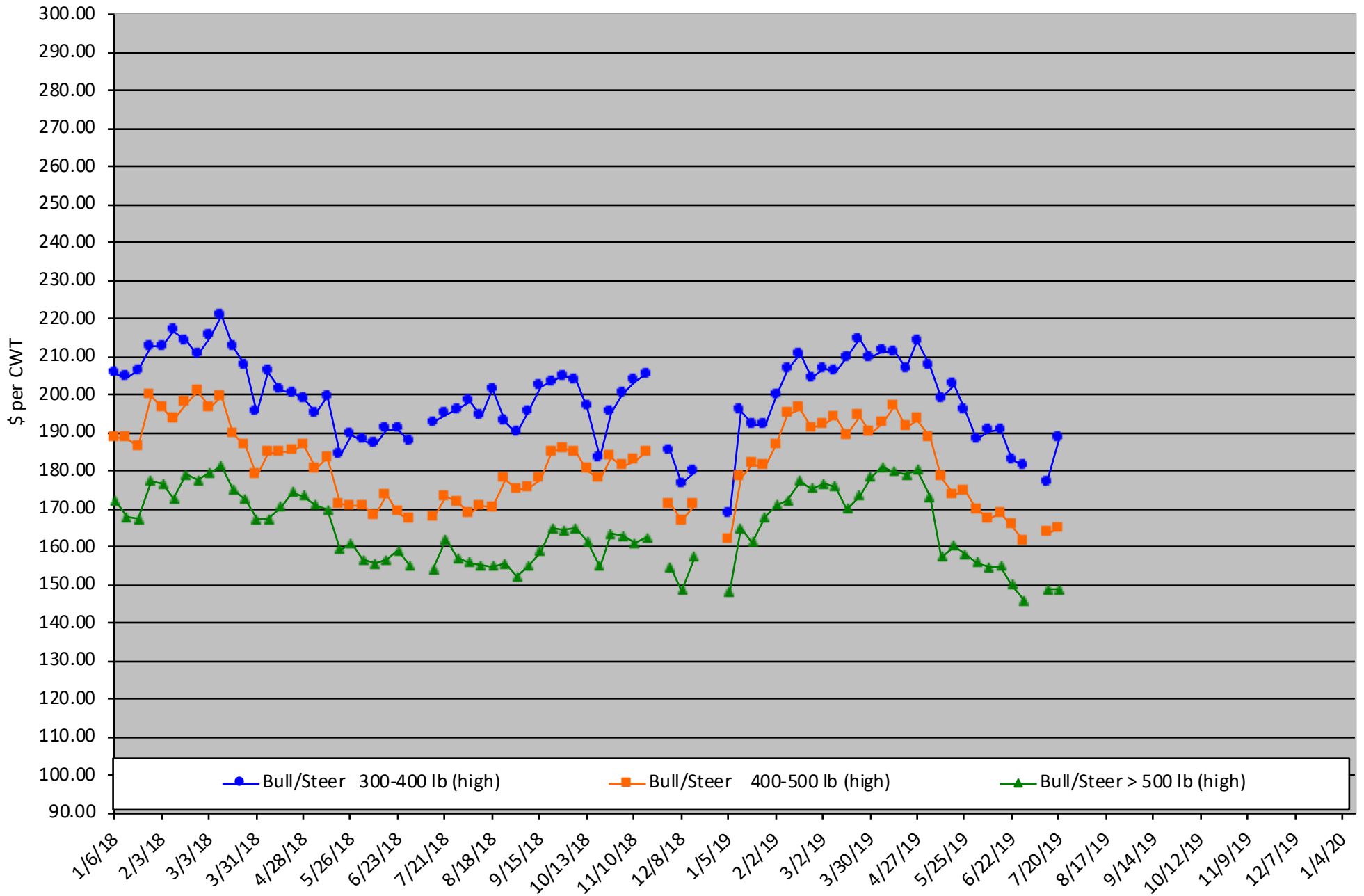


Calf Price Trends

Trend of the Highest Price Reported for Various Weight Calves, Average of 6 East & Central Texas Livestock Auctions

For a weekly email copy of this chart please subscribe at <http://beeffax.tamu.edu> or contact a Texas A&M AgriLife County Extension Agent

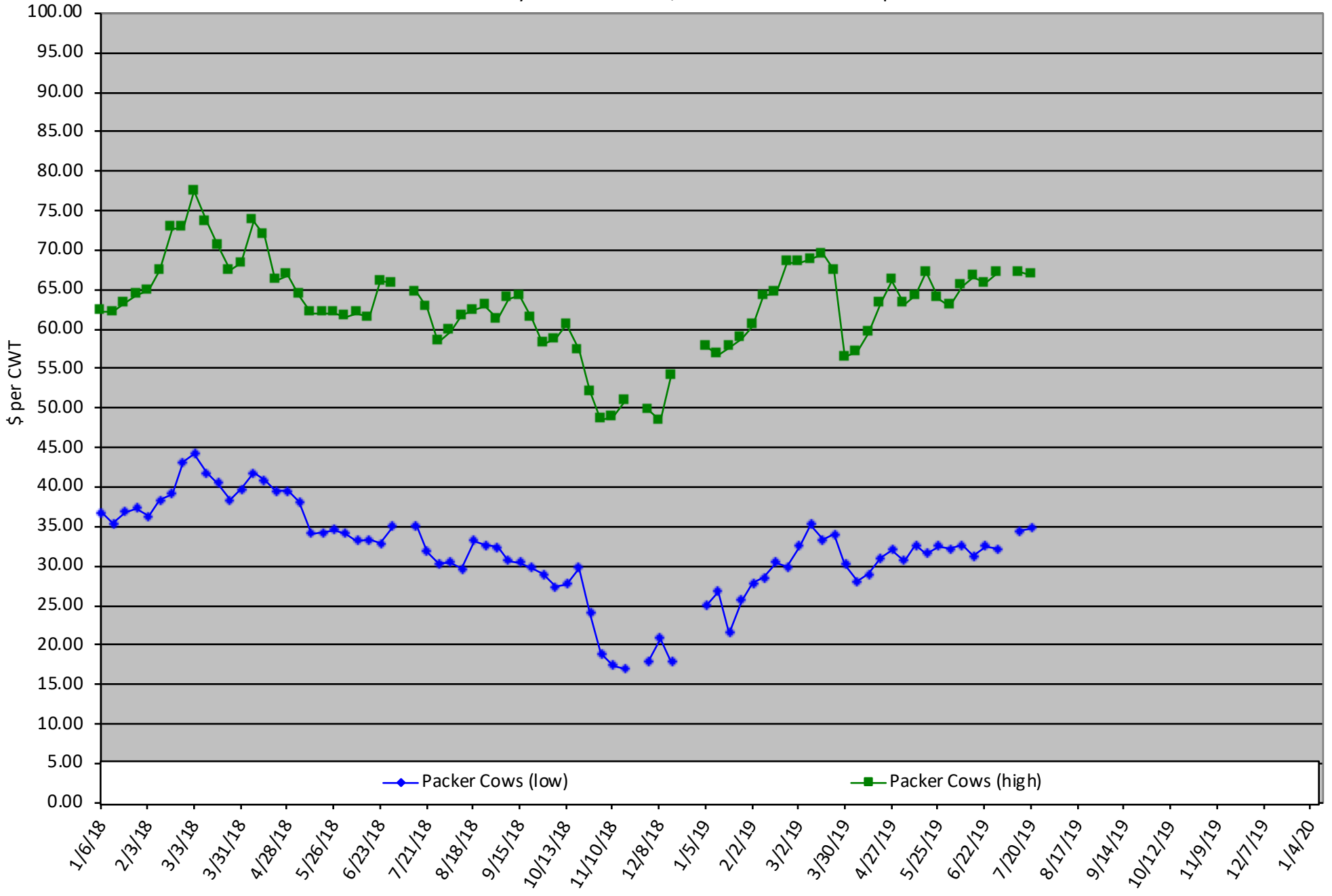
Chart created by Dr. Jason Banta, Extension Beef Cattle Specialist



Packer Cow PriceTrends

Trend of High and Low Prices Reported for Packer Cows, Average of 6 East & Central Texas Livestock Auctions

For a weekly email copy of this chart please subscribe at <http://beeffax.tamu.edu> or contact a Texas A&M AgriLife County Extension Agent
Chart created by Dr. Jason Banta, Extension Beef Cattle Specialist



BEEF QUALITY ASSURANCE TRAINING

TEXAS A&M
AGRI LIFE
EXTENSION

BEEF
LOVING
TE★ANS
TEXAS BEEF COUNCIL



JOIN US

**NEW BOSTON COMMUNITY CENTER
NEW BOSTON, TEXAS • AUGUST 29, 2019
• FREE BEEF DINNER WILL BE SERVED •**

WHAT: A Texas Beef Quality Assurance Training covering best management practices to ensure the beef you produce is safe and wholesome. Topics Include:

Residue Avoidance • Vaccine Handling • Proper Injection Technique
Genetic Selection • Environmental Stewardship • Cattle Handling & Welfare

WHERE: New Boston Community Center
301 NE Front Street ♦ New Boston, TX 75570

WHEN: Thursday, August 29 2019 ♦ 5:00 PM - 8:30 PM

HOW: Please register at www.texasbeefquality.com or 800-242-7820 ext. 192

For more information, visit texasbeefquality.com or
call the Bowie County Extension Office at 903-628-6702

BEEF QUALITY ASSURANCE TRAINING

TEXAS A&M
AGRI LIFE
EXTENSION



JOIN US

MINEOLA CIVIC CENTER
MINEOLA, TEXAS • AUGUST 30, 2019
• FREE LUNCH LUNCH WILL BE SERVED •

WHAT: A Texas Beef Quality Assurance Training covering best management practices to ensure the beef you produce is safe and wholesome. Topics Include:

Residue Avoidance • Vaccine Handling • Proper Injection Technique
Genetic Selection • Environmental Stewardship • Cattle Handling & Welfare

WHERE: Mineola Civic Center

1150 N Newsom Street ♦ Mineola, TX 75773

WHEN: Friday, August 30, 2019 ♦ 10:00 AM - 2:30 PM

HOW: Please register at www.texasbeefquality.com or 800-242-7820 ext. 192

Thank you to the following Texas A&M AgriLife Extension offices for hosting this event

Rains County
903-473-4580

Wood County
903-763-2924

Van Zandt County
903-567-4149

Reduce Winter Feeding with Stockpiled Forage and Winter Pasture

Friday, August 16, 2019

Texas A&M AgriLife Research and Extension Center
1710 N. Hwy 3053, Overton, TX 75684

**Would you prefer to feed hay for 60 days? 100 days?
or 150 days?**

**Here's an opportunity to learn how to significantly
reduce your hay feeding needs.**



Program presented by:

Drs. Vanessa Corriher-Olson and Jason Banta

Topics include:

- Stockpiled forage: management and utilization
- How many acres do you need of stockpiled forage and winter pasture?
- Cool-season forages and variety selection
- Establishment and fertilization
- Monthly and seasonal forage production potential
- Appropriate mineral supplementation
- Estimated costs

9:30 Program starts

12:00 Lunch served

4:30 Adjourn

Register before August 6th: \$60/ person

Register before August 14th: \$75/person

Money back guarantee

(Includes lunch and program materials)

Register online at: <https://agriliferegister.tamu.edu>;

or call Extension Conference Services @ 979-845-2604

2 Pesticide CEUs Available (1 IPM and 1 general)

For more information on this program please contact
Michelle Sensing @ 903-834-6191.

Sponsorship support provide by:

