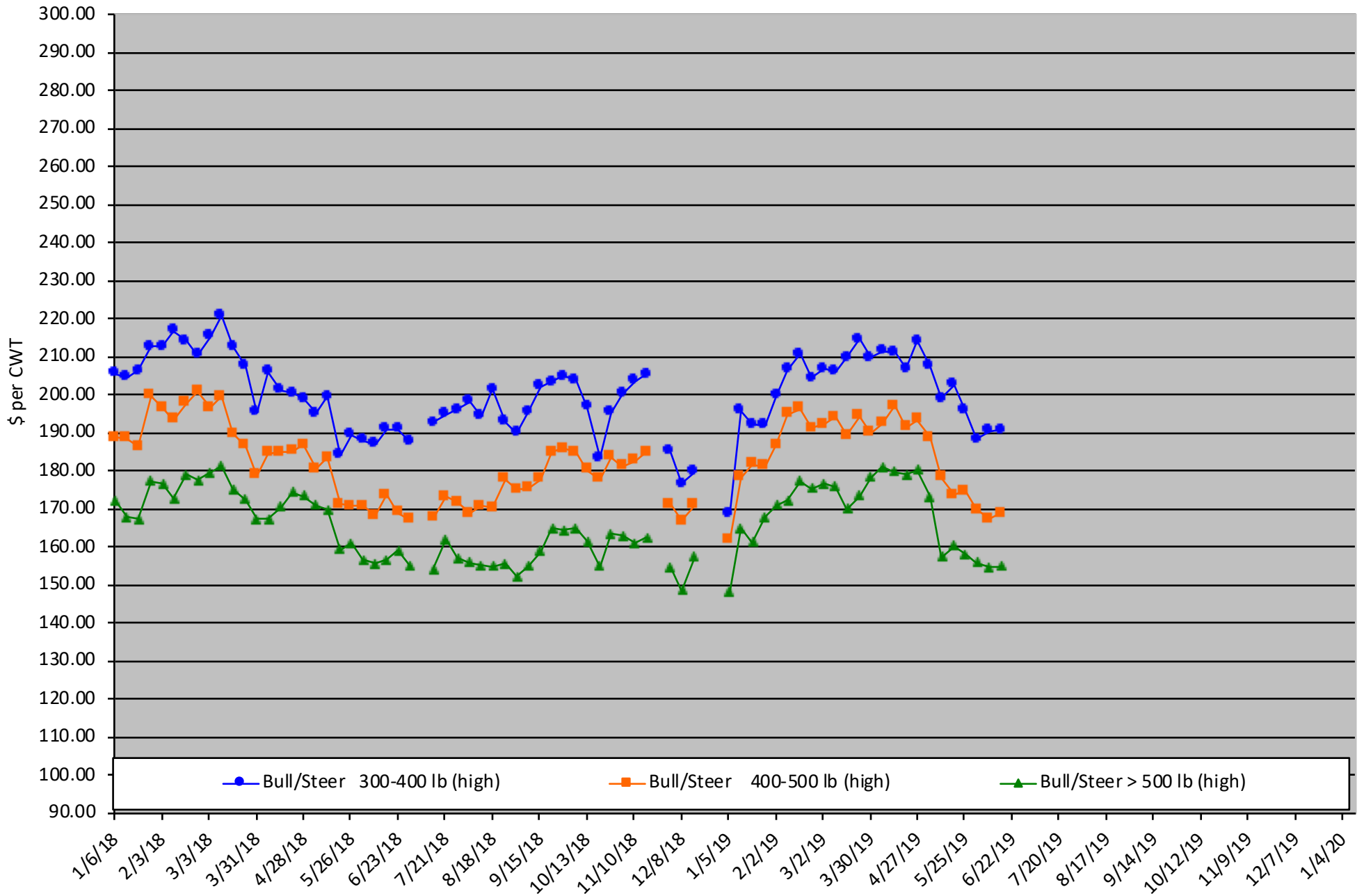


Calf Price Trends

Trend of the Highest Price Reported for Various Weight Calves, Average of 6 East & Central Texas Livestock Auctions

For a weekly email copy of this chart please subscribe at <http://beeffax.tamu.edu> or contact a Texas A&M AgriLife County Extension Agent

Chart created by Dr. Jason Banta, Extension Beef Cattle Specialist

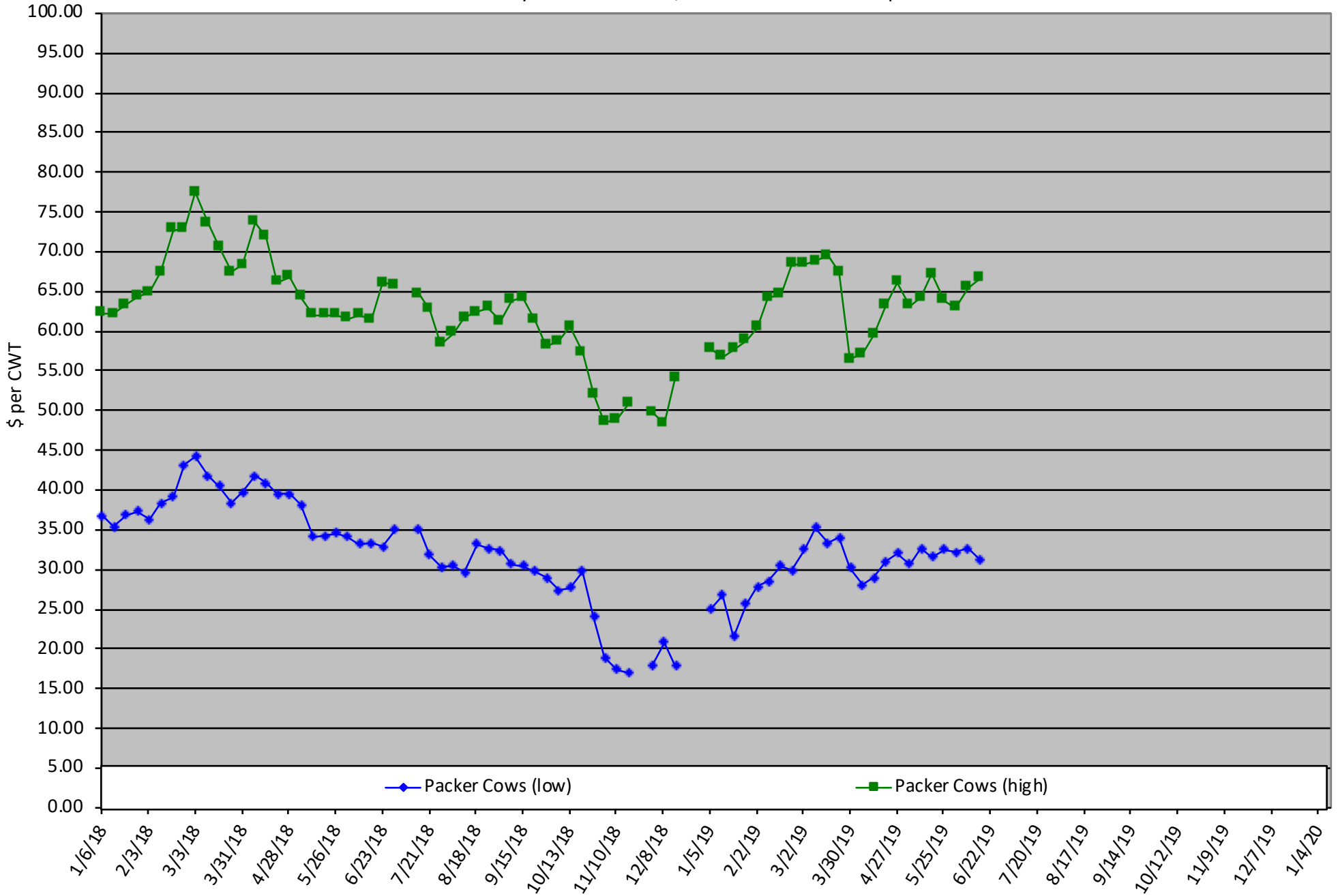


Packer Cow PriceTrends

Trend of High and Low Prices Reported for Packer Cows, Average of 6 East & Central Texas Livestock Auctions

For a weekly email copy of this chart please subscribe at <http://beeffax.tamu.edu> or contact a Texas A&M AgriLife County Extension Agent

Chart created by Dr. Jason Banta, Extension Beef Cattle Specialist



Reduce Winter Feeding with Stockpiled Forage and Winter Pasture

Friday, August 16, 2019

Texas A&M AgriLife Research and Extension Center
1710 N. Hwy 3053, Overton, TX 75684

**Would you prefer to feed hay for 60 days? 100 days?
or 150 days?**

**Here's an opportunity to learn how to significantly
reduce your hay feeding needs.**



Program presented by:

Drs. Vanessa Corriher-Olson and Jason Banta

Topics include:

- Stockpiled forage: management and utilization
- How many acres do you need of stockpiled forage and winter pasture?
- Cool-season forages and variety selection
- Establishment and fertilization
- Monthly and seasonal forage production potential
- Appropriate mineral supplementation
- Estimated costs

9:30 Program starts

12:00 Lunch served

4:30 Adjourn

Register before August 6th: \$60/ person

Register before August 14th: \$75/person

Money back guarantee

(Includes lunch and program materials)

Register online at: <https://agriliferegister.tamu.edu>;

or call Extension Conference Services @ 979-845-2604

2 Pesticide CEUs Available (1 IPM and 1 general)

For more information on this program please contact
Michelle Sensing @ 903-834-6191.

Sponsorship support provide by:

