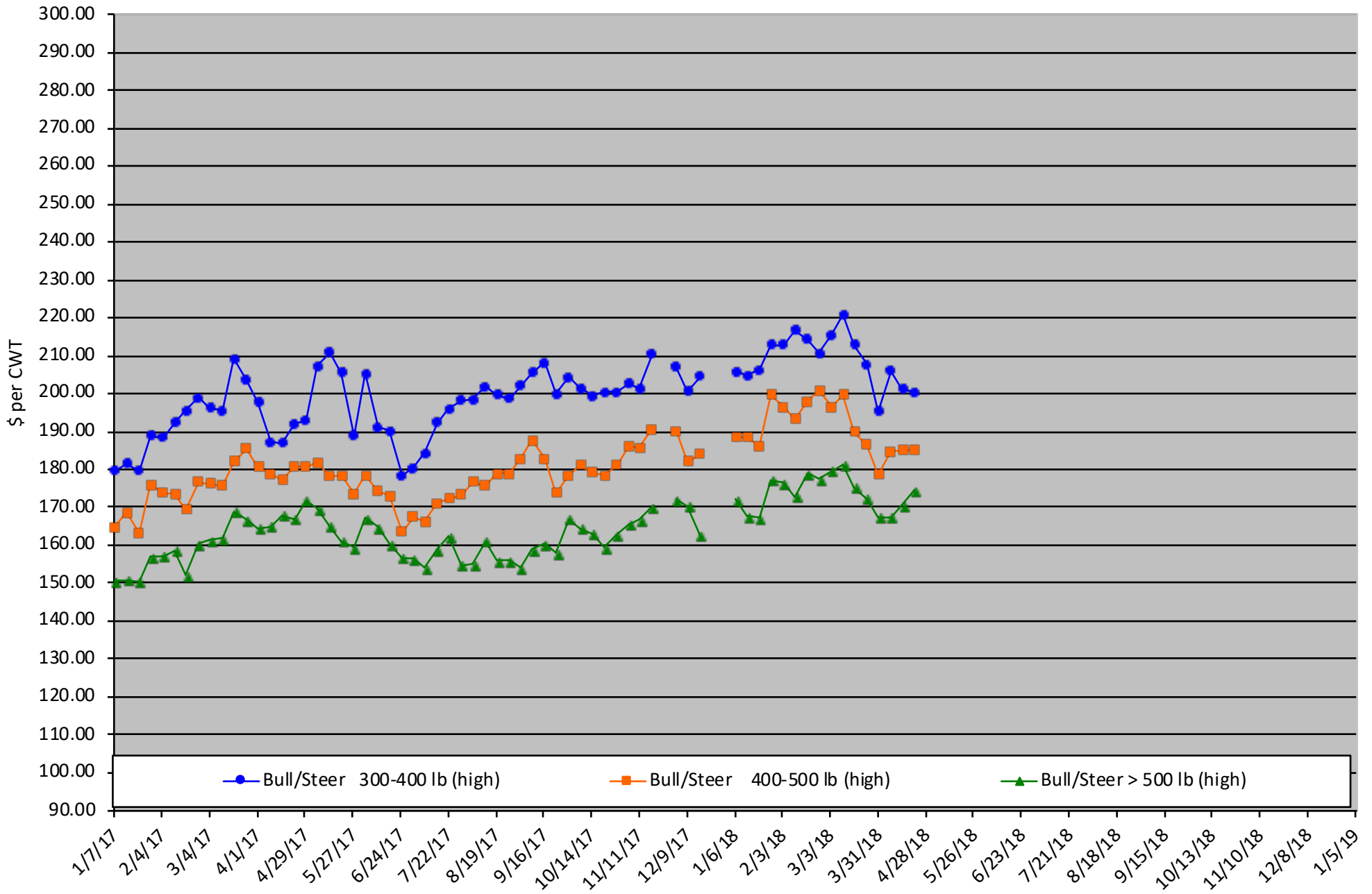


# Calf Price Trends

Trend of the Highest Price Reported for Various Weight Calves, Average of 6 East & Central Texas Livestock Auctions

For a weekly email copy of this chart please subscribe at <http://beeffax.tamu.edu> or contact a Texas A&M AgriLife County Extension Agent  
Chart created by Dr. Jason Banta, Extension Beef Cattle Specialist

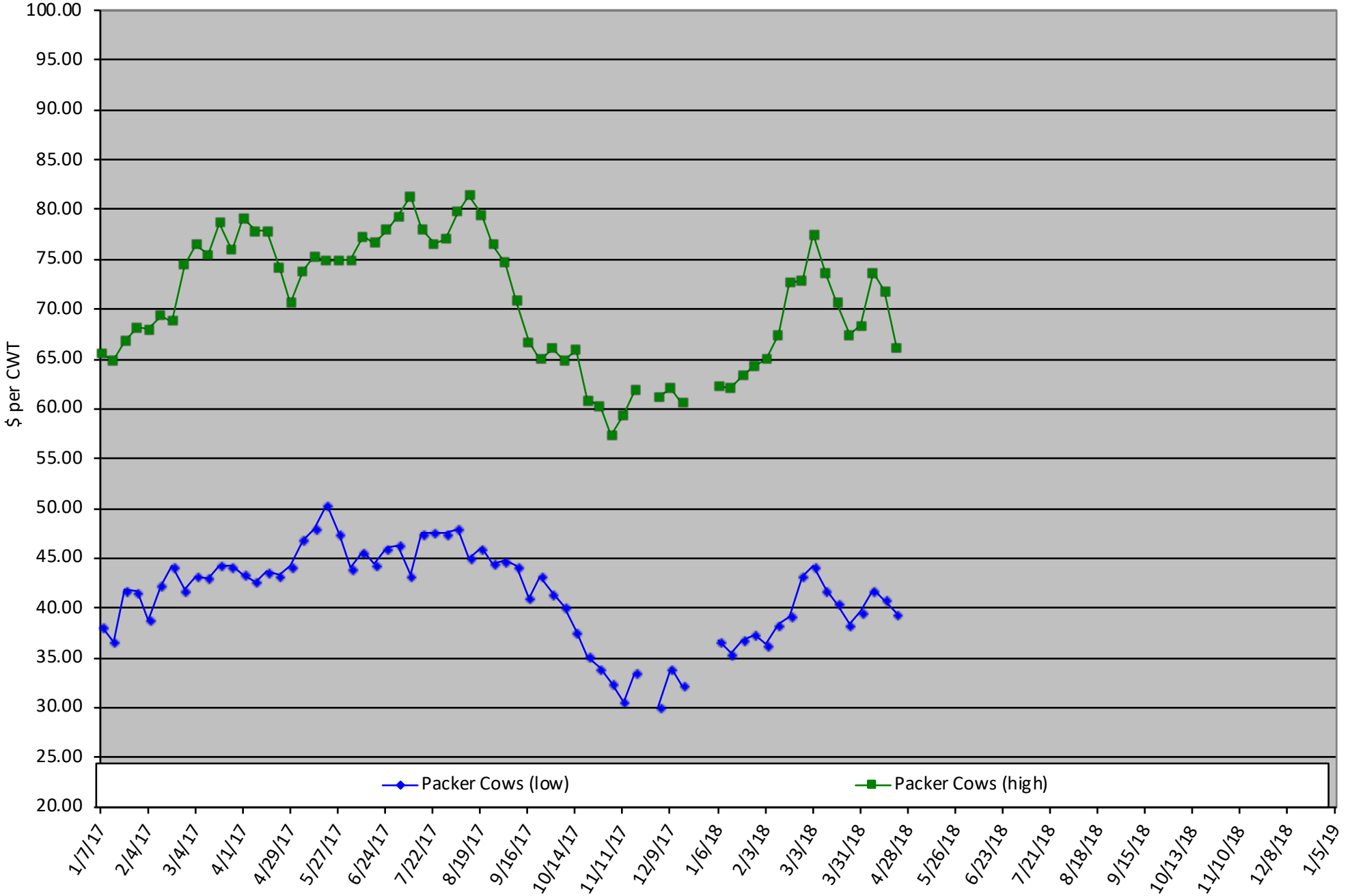


# Packer Cow PriceTrends

Trend of High and Low Prices Reported for Packer Cows, Average of 6 East & Central Texas Livestock Auctions

For a weekly email copy of this chart please subscribe at <http://beeffax.tamu.edu> or contact a Texas A&M AgriLife County Extension Agent

Chart created by Dr. Jason Banta, Extension Beef Cattle Specialist



# BEEF QUALITY ASSURANCE TRAINING

TEXAS A&M  
AGRI LIFE  
EXTENSION



# JOIN US

**PRIEFERT MANUFACTURING - HANGAR**

**MT. PLEASANT, TEXAS • 5.22.18**

**• FREE BEEF LUNCH WILL BE SERVED •**

**WHAT:** A Texas Beef Quality Assurance Training covering best management practices to ensure the beef you produce is safe and wholesome. Topics Include:

Residue Avoidance • Vaccine Handling • Proper Injection Technique  
Genetic Selection • Environmental Stewardship • Cattle Handling & Welfare

**WHERE:** Priefert Manufacturing - Hangar  
409 FM 4000 ♦ Mt. Pleasant, TX 75455

**WHEN:** Tuesday, May 22, 2018 ♦ 9:00 AM - 2:00 PM

**HOW:** Please register at [www.texasbeefquality.com](http://www.texasbeefquality.com) or 800-242-7820 ext. 192

For more information, visit [texasbeefquality.com](http://texasbeefquality.com) or call 800-242-7820 or the Titus County Extension Office at 903-572-0261.



Sponsored by:  
**Boehringer  
Ingelheim**

# BEEF QUALITY ASSURANCE TRAINING

TEXAS A&M  
AGRI LIFE  
EXTENSION



# JOIN US

**HART-MORRIS CONSERVATION CENTER**  
**ATHENS, TEXAS • 5.23.18**

**• FREE BEEF DINNER WILL BE SERVED •**

**WHAT:** A Texas Beef Quality Assurance Training covering best management practices to ensure the beef you produce is safe and wholesome. Topics Include:

Residue Avoidance • Vaccine Handling • Proper Injection Technique  
Genetic Selection • Environmental Stewardship • Cattle Handling & Welfare

**WHERE:** Hart-Morris Conservation Center  
601 County Road 4812 • Athens, TX 75752

**WHEN:** Wednesday, May 23, 2018 • 3:30 PM - 7:30 PM



Sponsored by:  
**Boehringer  
Ingelheim**

**HOW:** Please register at [www.texasbeefquality.com](http://www.texasbeefquality.com) or 800-242-7820 ext. 192

For more information, visit [texasbeefquality.com](http://texasbeefquality.com) or call 800-242-7820 or the Henderson County Extension Office at 903-675-6130.