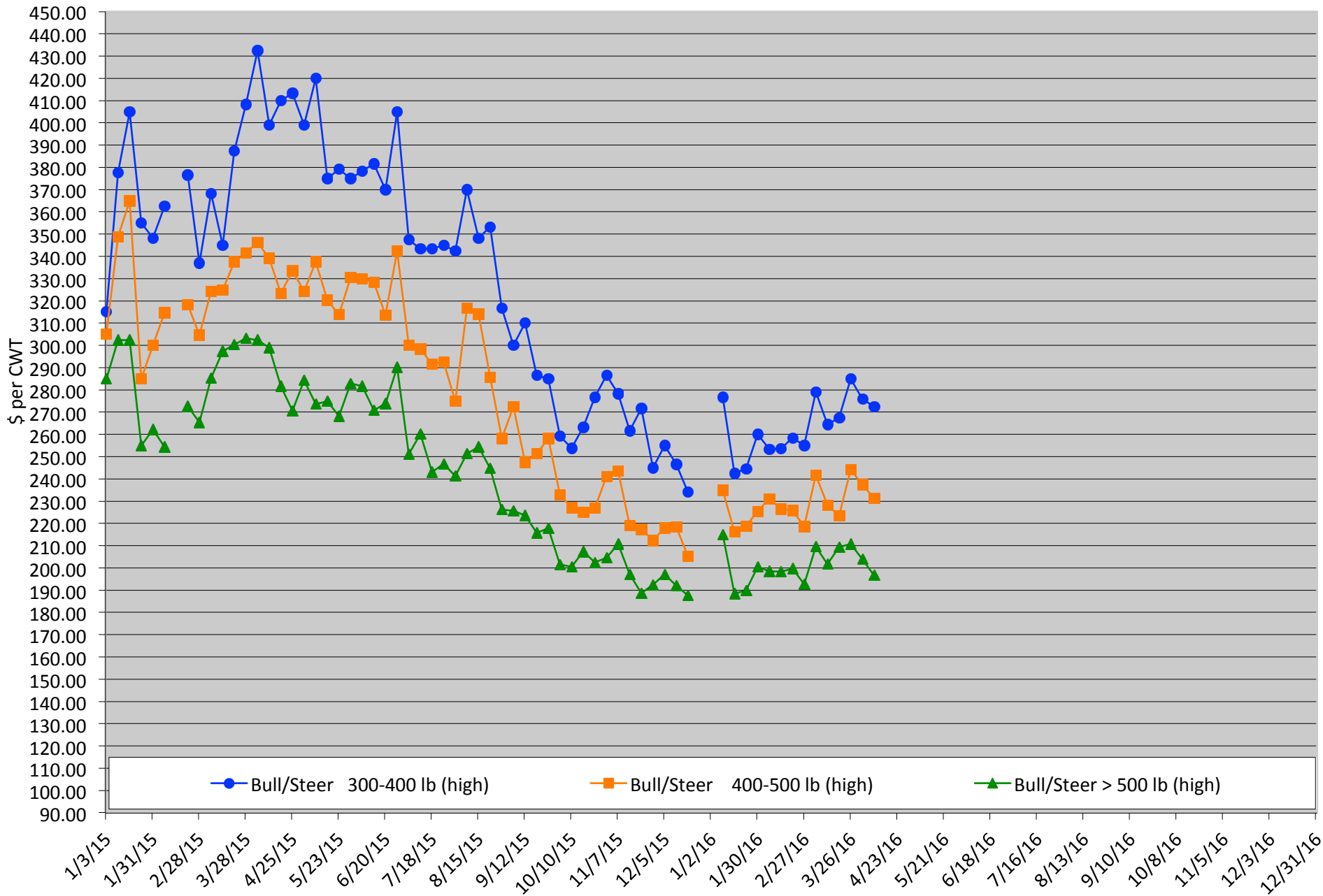


# Calf Price Trends

Trend of **Highest** Prices Reported for Various Weight Calves, Average of 3 East Texas Livestock Auctions

For a weekly email copy of this chart please subscribe at <http://beeffax.tamu.edu> or contact a Texas A&M AgriLife County Extension Agent

Chart created by Dr. Jason Banta, Extension Beef Cattle Specialist

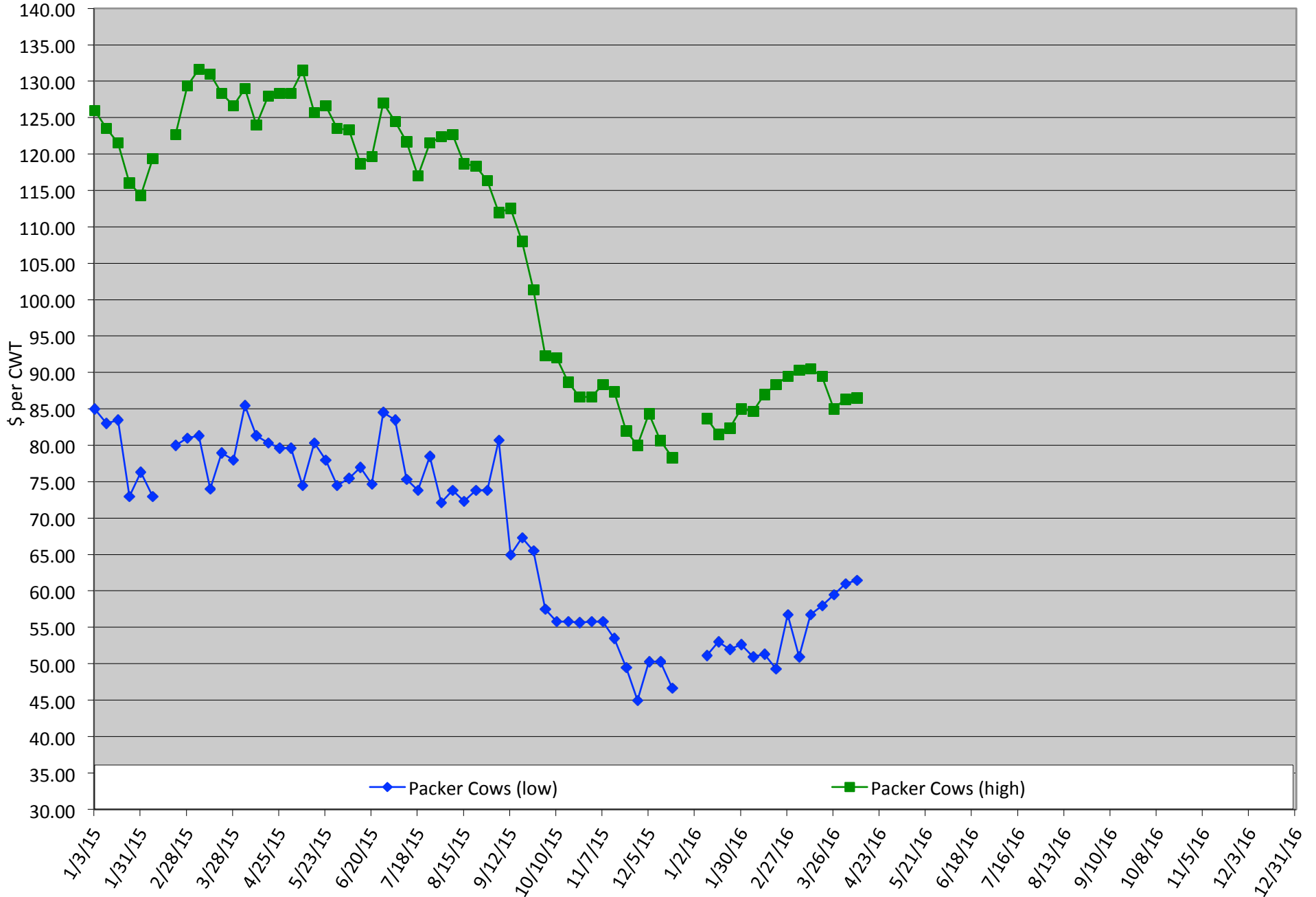


# Packer Cow PriceTrends

Trend of High and Low Prices Reported for Packer Cows, Average of 3 East Texas Livestock Auctions

For a weekly email copy of this chart please subscribe at <http://beeffax.tamu.edu> or contact a Texas A&M AgriLife County Extension Agent

Chart created by Dr. Jason Banta, Extension Beef Cattle Specialist



# Beef Quality Assurance Training

**Monday, May 16, 2016**  
 Fairfield Civic Center  
 839 East Commerce Street, Fairfield  
[www.texasbeefquality.com](http://www.texasbeefquality.com)

Program starts 9:00 am  
 Lunch served 12:00  
 Conclude around 1:30 pm

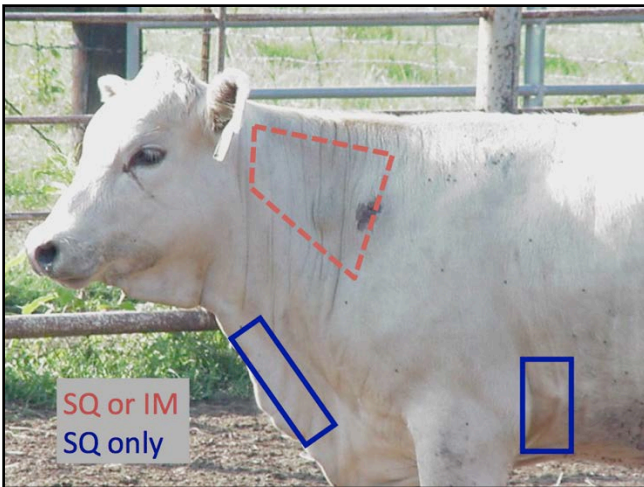
**No Cost to Attend**

Please RSVP to: TSCRA at 800-242-7820  
 or Freestone County Texas A&M AgriLife Extension at 903-389-3436



**Topics Include**

- food safety
- cattle and beef quality
- environmental stewardship
- animal handling and well being
- needle and syringe selection
- proper injection technique
- vaccine handling
- residue avoidance



A collaborative effort of:

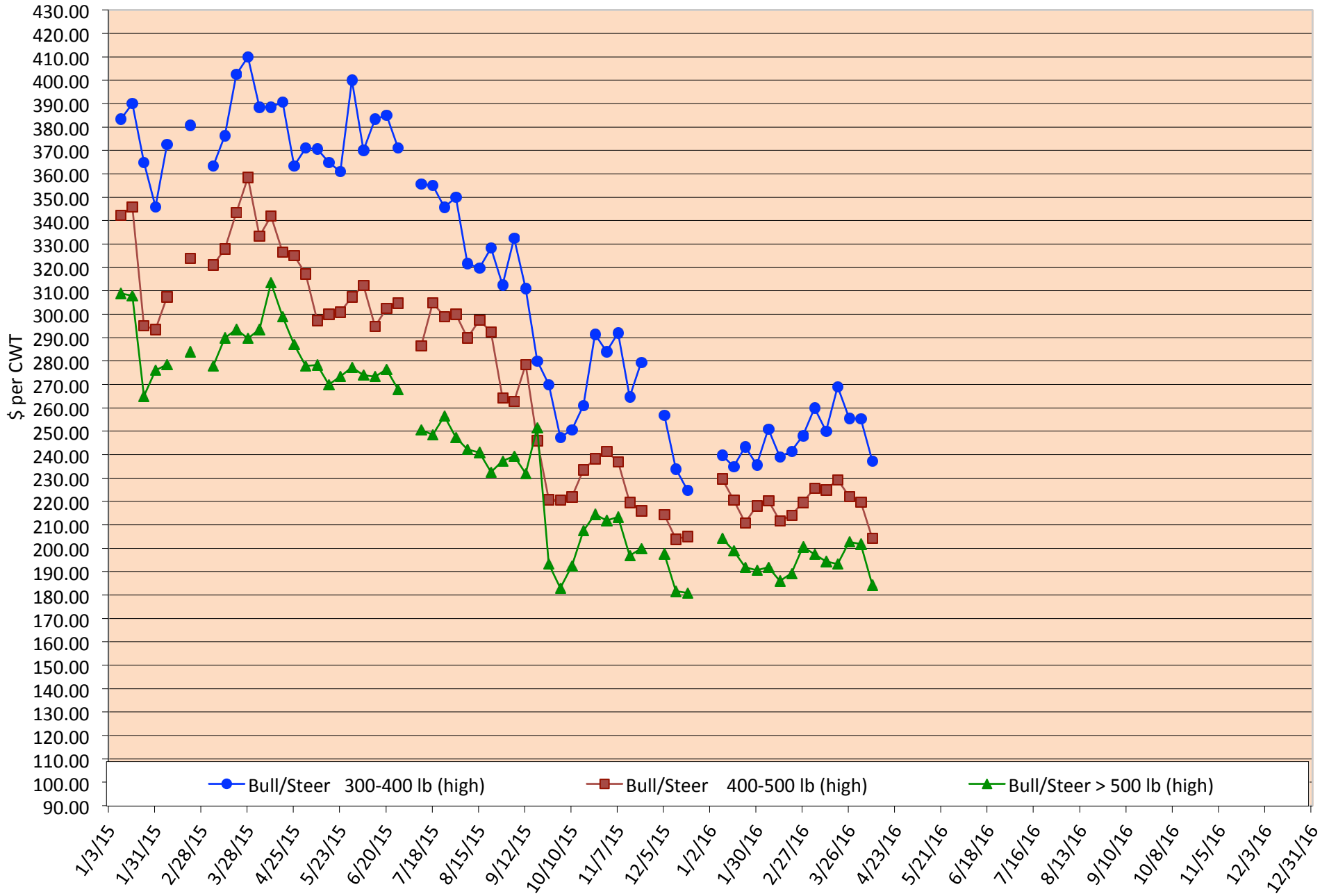
Program sponsorship provided by:



# Calf Price Trends

Trend of Highest Prices Reported for Various Weight Calves, Average of 3 Central Texas Livestock Auctions

For a weekly email copy of this chart please subscribe at <http://beeffax.tamu.edu> or contact a Texas A&M AgriLife County Extension Agent  
Chart created by Dr. Jason Banta, Extension Beef Cattle Specialist



# Packer Cow PriceTrends

Trend of High and Low Prices Reported for Packer Cows, Average of 3 Central Texas Livestock Auctions

For a weekly email copy of this chart please subscribe at <http://beeffax.tamu.edu> or contact a Texas A&M AgriLife County Extension Agent

Chart created by Dr. Jason Banta, Extension Beef Cattle Specialist

