

Texas Beef Quality Producer Program

BEEF QUALITY ASSURANCE TRAINING



**SATURDAY, AUGUST 29, 2015
9:30 A.M. - 3:00 P.M.**

TSCRA Headquarters

1301 West 7th Street, Fort Worth, TX 76102

The Texas Beef Quality Producer Program covers proper management techniques to ensure the beef you produce is a safe and wholesome product.

Training programs cover Beef Quality Assurance, industry updates, record keeping, environmental stewardship and proper management practices associated with genetic selection, cattle handling, culling, vaccination and more.

Special Thanks to our Premier Sponsor!



Don't Miss This Informative Session!

FREE BEEF LUNCH WILL BE SERVED

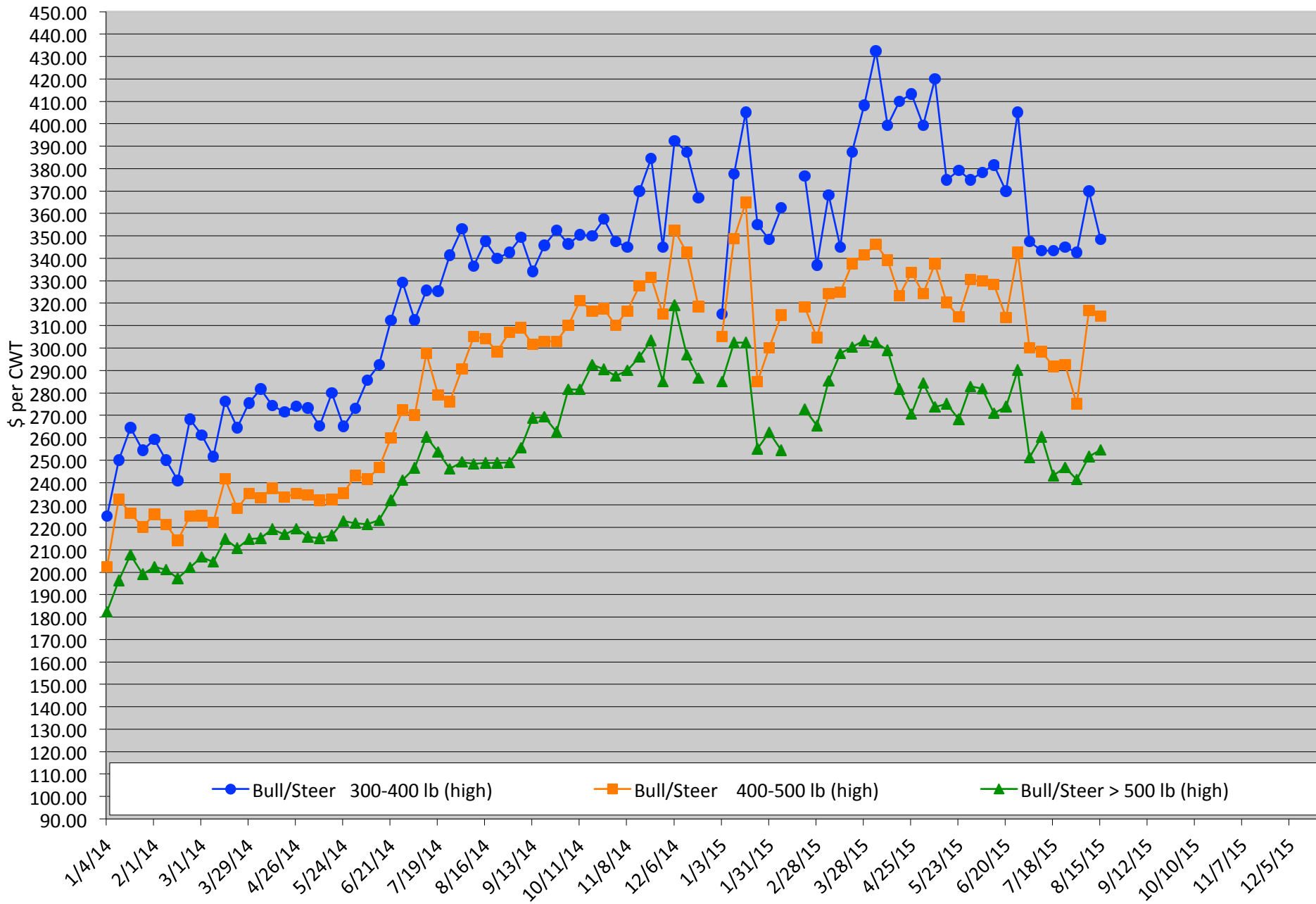
Please RSVP to 800-242-7820 ext. 192 or rsvp@tscra.org

Calf Price Trends

Trend of Highest Prices Reported for Various Weight Calves, Average of 3 East Texas Livestock Auctions

For a weekly email copy of this chart please subscribe at <http://beeffax.tamu.edu> or contact a Texas A&M AgriLife County Extension Agent

Chart created by Dr. Jason Banta, Extension Beef Cattle Specialist

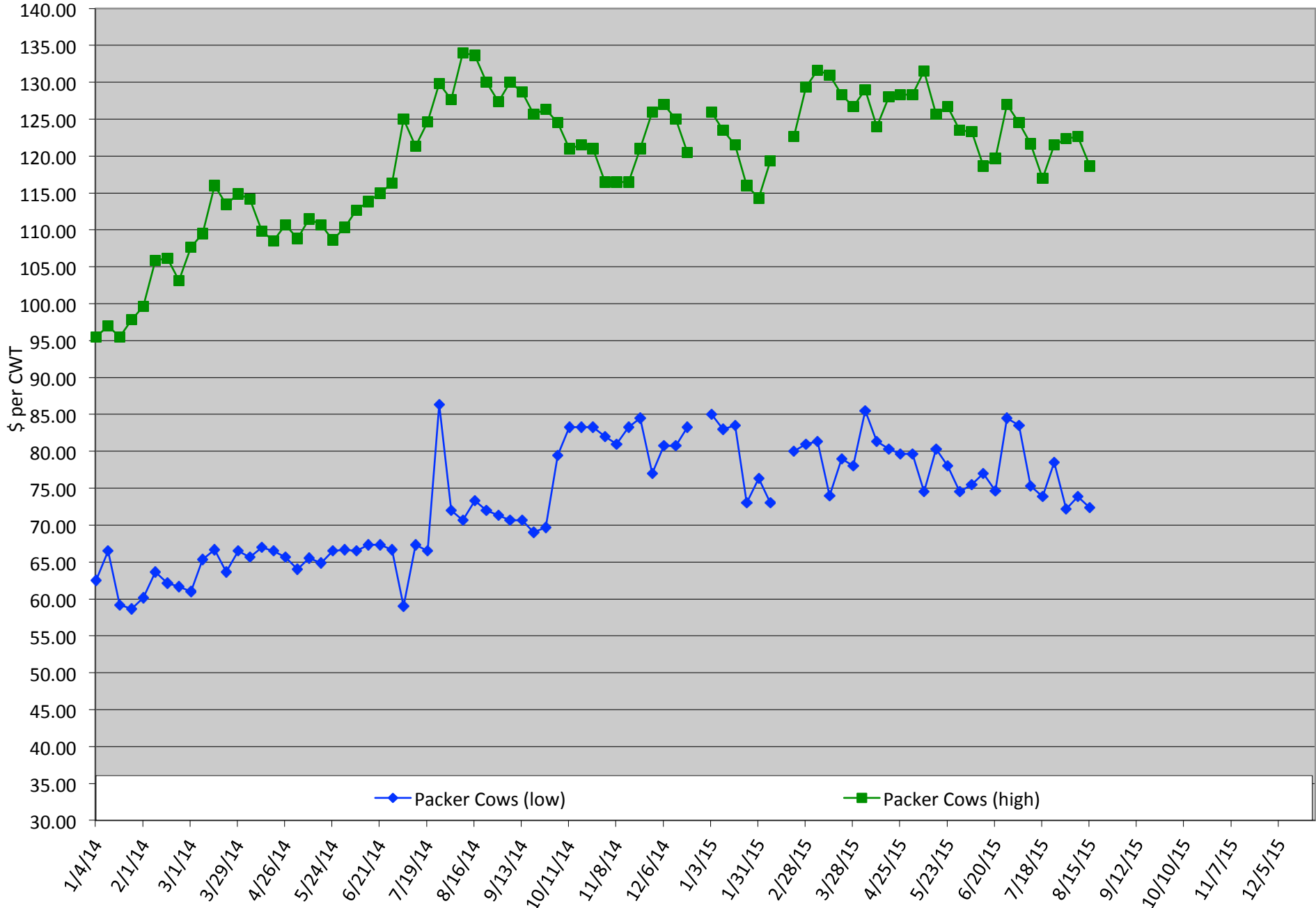


Packer Cow Price Trends

Trend of High and Low Prices Reported for Packer Cows, Average of 3 East Texas Livestock Auctions

For a weekly email copy of this chart please subscribe at <http://beeffax.tamu.edu> or contact a Texas A&M AgriLife County Extension Agent

Chart created by Dr. Jason Banta, Extension Beef Cattle Specialist



Bull Selection for Commercial and Seedstock Beef Producers

Thursday, November 12, 2015

44 FARMS

1945 County Road 227, Cameron, TX

A bull is responsible for 50% of the herd's calf crop and a good bull is an investment that can certainly pay big dividends. This one-day, intensive workshop will discuss applied as well as advanced bull selection techniques and use live animals to aid in visual selection.



Drs. Jason Cleere and Jason Banta will discuss the following topics:

- Cattle Breeds and Breeding Programs
- Visual Selection
- Individual Performance Data, EPDs, and Genetic markers
- Bull Fertility and Bull to Cow Ratios
- Bull care and Management

9:30 Registration starts

10:00 Program starts

12:00 Lunch served

5:00 Adjourn

Register before November 3rd: \$60/ person

Register before November 10th: \$75/person

Money back guarantee

(Includes lunch and program materials)

Register online at: <https://agriliferegister.tamu.edu>;

or call Extension Conference Services @ 979-845-2604

For more information on this program please contact
Michelle Sensing @ 903-834-6191.



Pesticide Applicator Training ~2 Events~ 10 CEUs

Thursday, December 3, 2015

Texas A&M AgriLife Research and Extension Center
1710 N. Hwy 3053, Overton, TX 75684

- Weed Control in Pastures and Hay Meadows
- Forage Insect Pest Update
- Spray Adjuvants and Additives
- How to Properly Dispose of Empty Containers and Old Pesticides
- Laws & Regulations of Pesticide Use

*5 Pesticide CEUs Available
(1 Laws & Regulations, 2 IPM, & 2 general)*



On Site Registration
Cost: \$30/ person
(Includes lunch)

7:30 Registration starts
8:30 Program starts
11:45 Lunch served
3:00 Adjourn



Tuesday, December 8, 2015

Texas A&M AgriLife Research and Extension Center
1710 N. Hwy 3053, Overton, TX 75684

*5 Pesticide CEUs Available
(1 Laws & Regulations, 2 IPM, & 2 general)*

On Site Registration
Cost: \$30/ person
(Includes lunch)

7:30 Registration starts
8:30 Program starts
11:45 Lunch served
3:00 Adjourn

- Turf Diseases and Pests
- Turf Weed Management
- Pesticide Use in Vegetable Production
- What Bugs Are Eating Your Money?
- Wild Pig Control/Laws Update

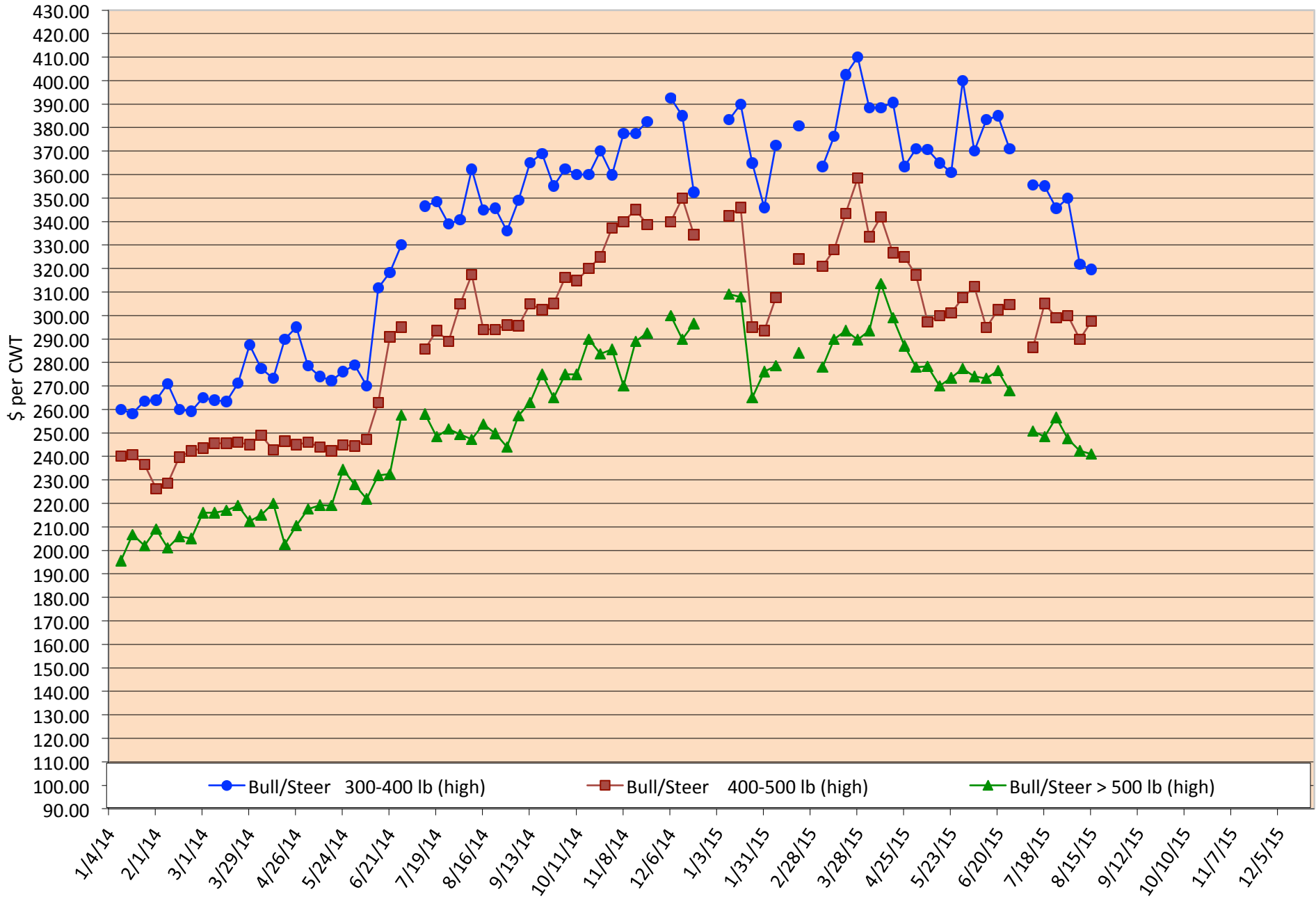
For more information on this program please contact Pam Hickman @ 903-834-6191.

Calf Price Trends

Trend of Highest Prices Reported for Various Weight Calves, Average of 3 Central Texas Livestock Auctions

For a weekly email copy of this chart please subscribe at <http://beeffax.tamu.edu> or contact a Texas A&M AgriLife County Extension Agent

Chart created by Dr. Jason Banta, Extension Beef Cattle Specialist



Packer Cow PriceTrends

Trend of High and Low Prices Reported for Packer Cows, Average of 3 Central Texas Livestock Auctions

For a weekly email copy of this chart please subscribe at <http://beeffax.tamu.edu> or contact a Texas A&M AgriLife County Extension Agent

Chart created by Dr. Jason Banta, Extension Beef Cattle Specialist

