

Texas Beef Quality Producer Program

BEEF QUALITY ASSURANCE TRAINING



WEDNESDAY, JULY 29, 2015
9:30 A.M. - 3:00 P.M.

Bois D'Arc Creek Cowboy Church
3301 State Hwy 21, Bonham, TX 75418

The Texas Beef Quality Producer Program covers proper management techniques to ensure the beef you produce is a safe and wholesome product.

Training programs cover Beef Quality Assurance, industry updates, record keeping, environmental stewardship and proper management practices associated with genetic selection, cattle handling, culling, vaccination and more.

Special Thanks to our Premier Sponsor!



Don't Miss This Informative Session!

FREE BEEF LUNCH WILL BE SERVED

Please RSVP to 800-242-7820 ext. 192 or rsvp@tscra.org

Texas Beef Quality Producer Program

BEEF QUALITY ASSURANCE TRAINING



THURSDAY, JULY 30, 2015
2:30 P.M. - 7:30 P.M.

Ben E. Keith Building
2019 W. Oak, Palestine, TX 75801

The Texas Beef Quality Producer Program covers proper management techniques to ensure the beef you produce is a safe and wholesome product.

Training programs cover Beef Quality Assurance, industry updates, record keeping, environmental stewardship and proper management practices associated with genetic selection, cattle handling, culling, vaccination and more.

Don't Miss This Informative Session!
FREE BEEF DINNER WILL BE SERVED

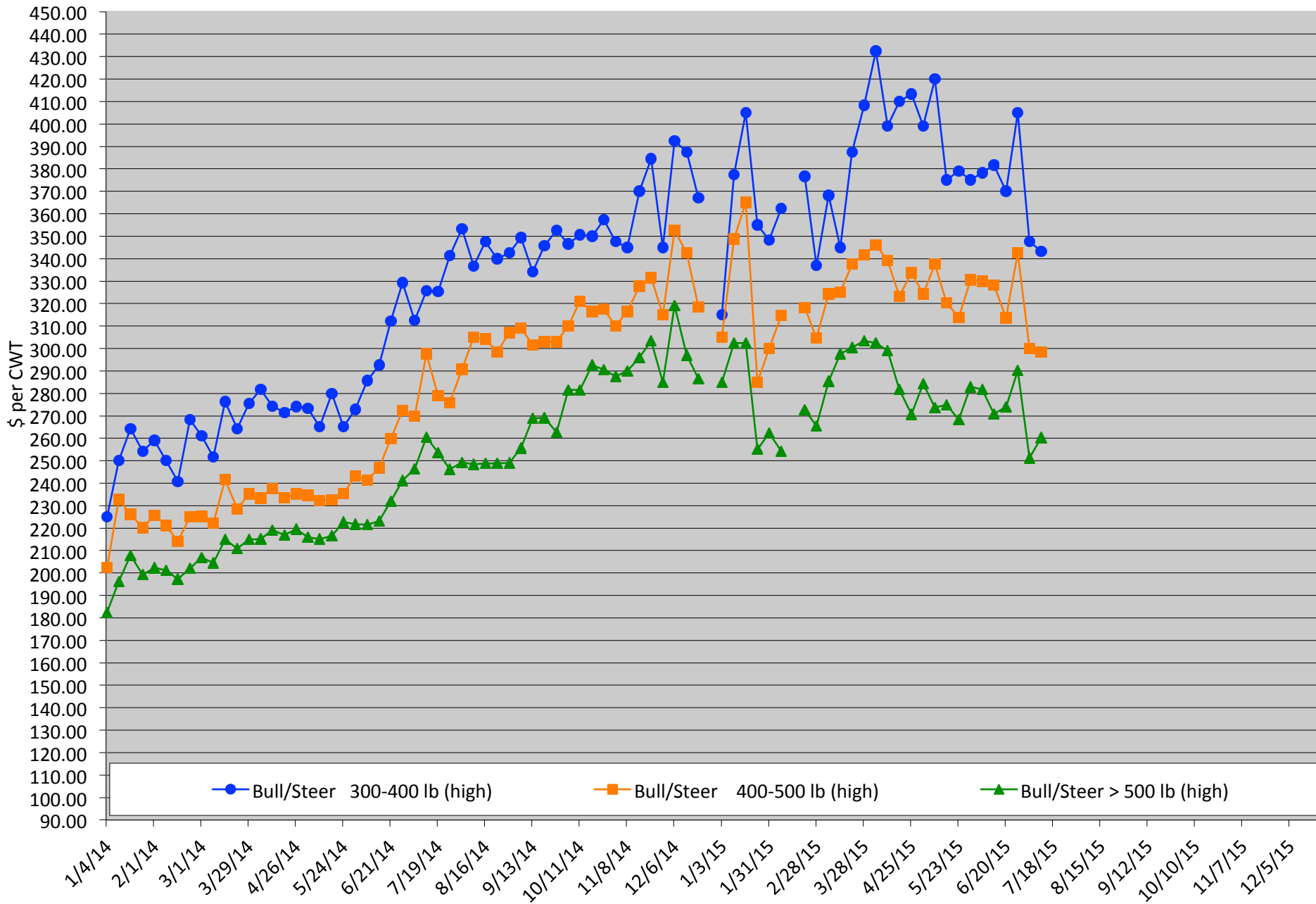
Please RSVP to 800-242-7820 ext. 192 or rsvp@tscra.org

Calf Price Trends

Trend of Highest Prices Reported for Various Weight Calves, Average of 3 East Texas Livestock Auctions

For a weekly email copy of this chart please subscribe at <http://beeffax.tamu.edu> or contact a Texas A&M AgriLife County Extension Agent

Chart created by Dr. Jason Banta, Extension Beef Cattle Specialist

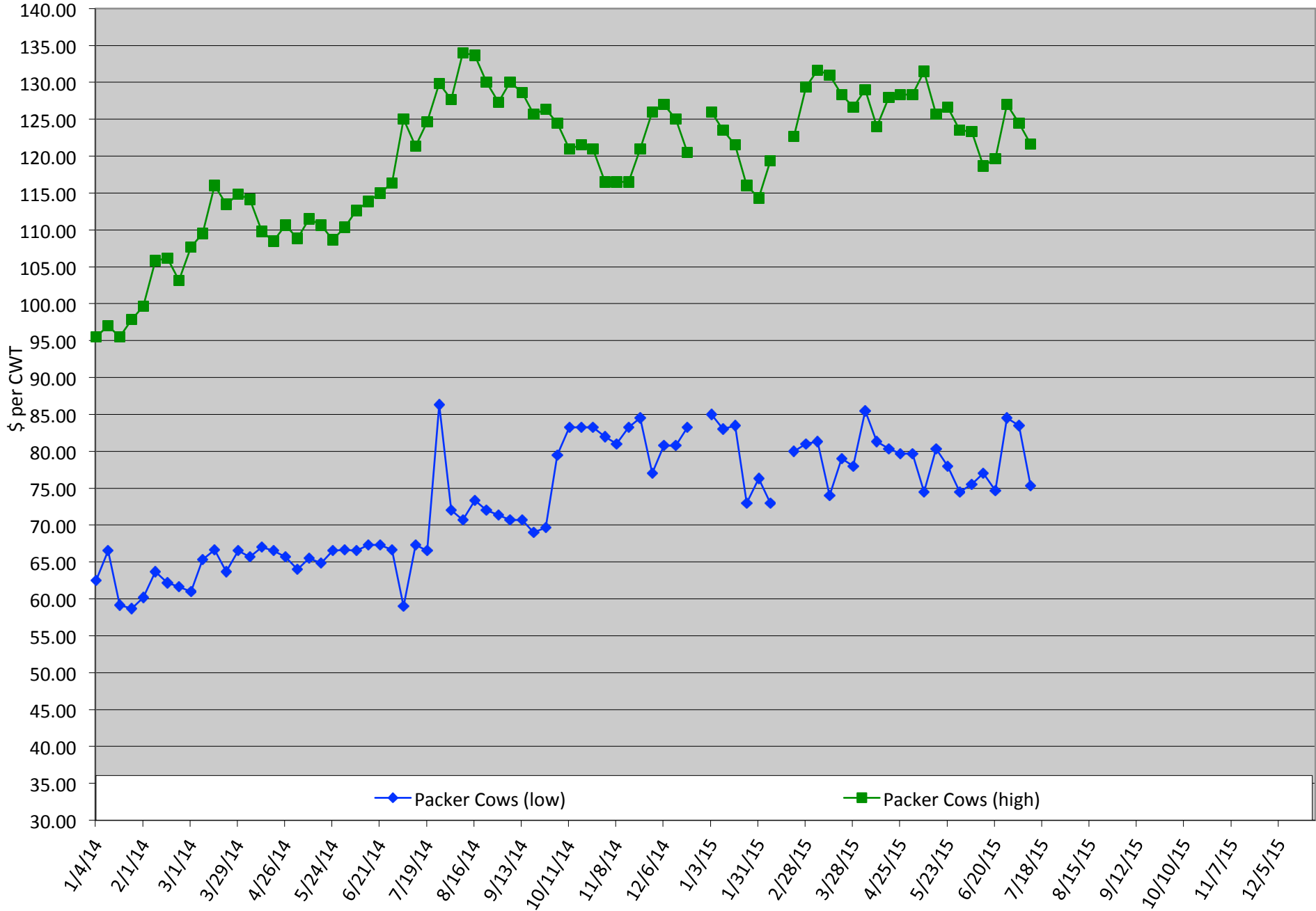


Packer Cow PriceTrends

Trend of High and Low Prices Reported for Packer Cows, Average of 3 East Texas Livestock Auctions

For a weekly email copy of this chart please subscribe at <http://beeffax.tamu.edu> or contact a Texas A&M AgriLife County Extension Agent

Chart created by Dr. Jason Banta, Extension Beef Cattle Specialist

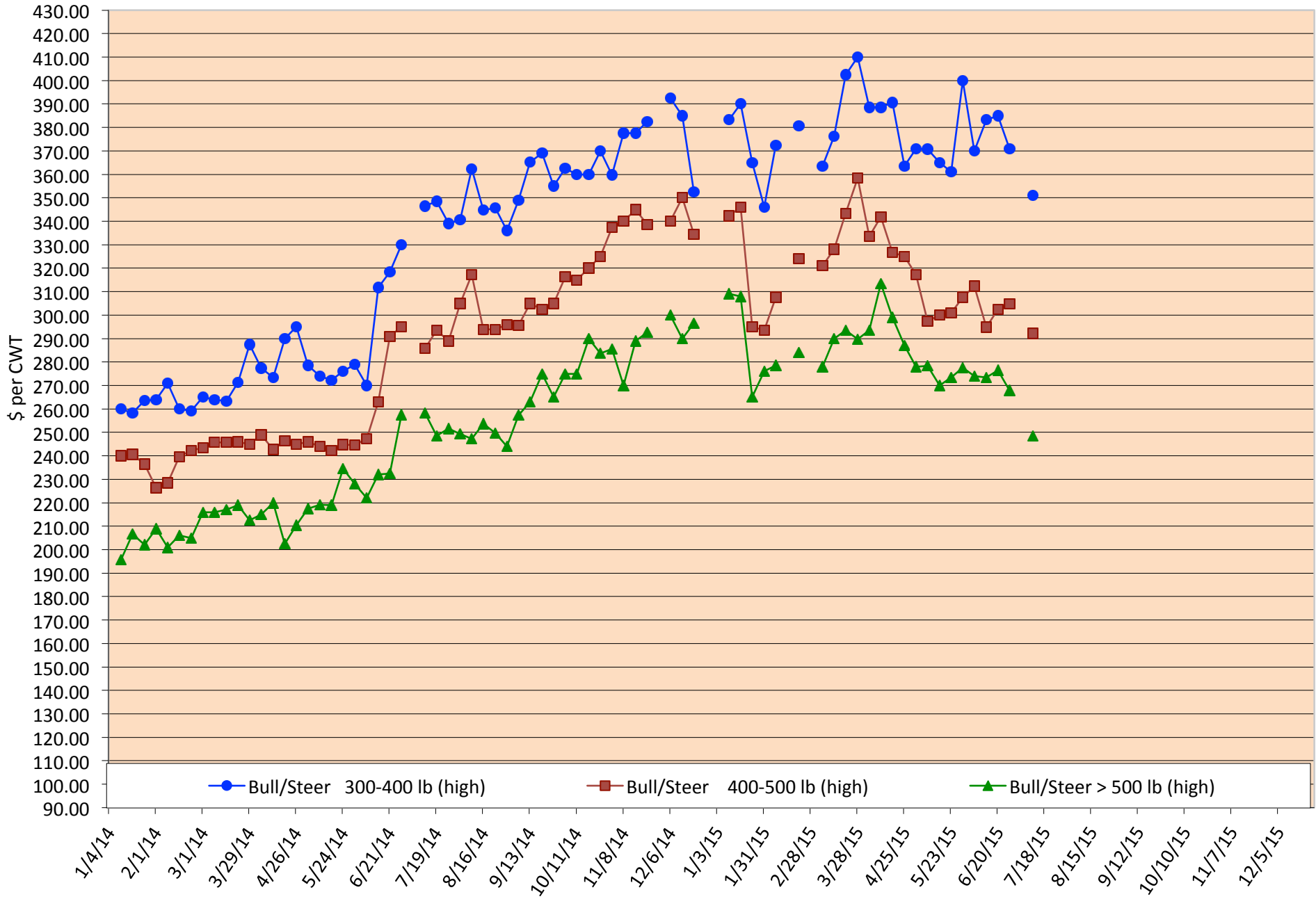


Calf Price Trends

Trend of Highest Prices Reported for Various Weight Calves, Average of 3 Central Texas Livestock Auctions

For a weekly email copy of this chart please subscribe at <http://beeffax.tamu.edu> or contact a Texas A&M AgriLife County Extension Agent

Chart created by Dr. Jason Banta, Extension Beef Cattle Specialist

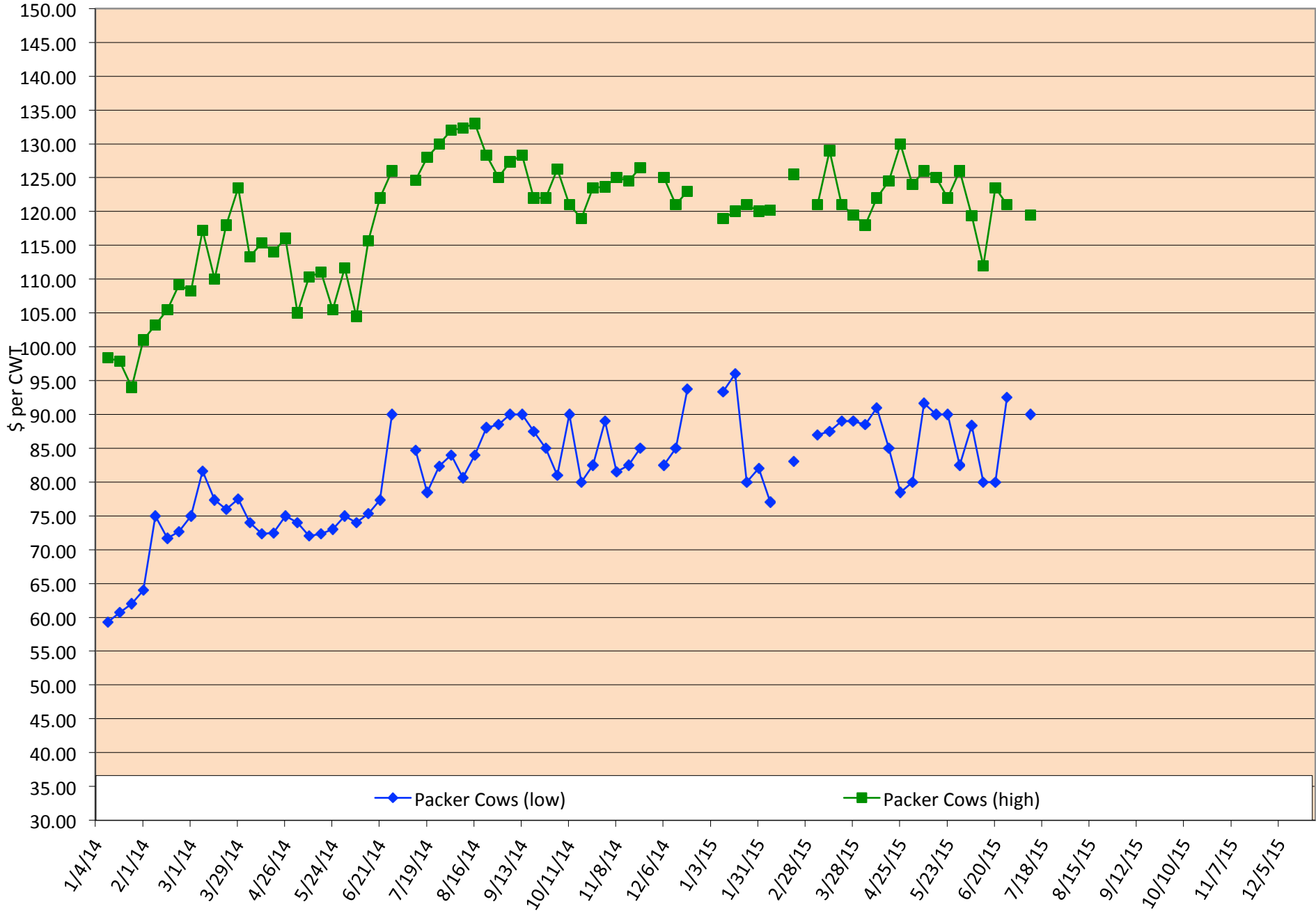


Packer Cow PriceTrends

Trend of High and Low Prices Reported for Packer Cows, Average of 3 Central Texas Livestock Auctions

For a weekly email copy of this chart please subscribe at <http://beeffax.tamu.edu> or contact a Texas A&M AgriLife County Extension Agent

Chart created by Dr. Jason Banta, Extension Beef Cattle Specialist



Winter Pastures for Central and East Texas

Friday, August 14, 2015

Texas A&M AgriLife Research and Extension Center
1710 N. Hwy 3053, Overton, TX 75684

**Reduce hay needs and winter-feeding expenses
by using winter pastures.**

Program presented by:
Drs. Vanessa Corriher-Olson and Jason Banta



Topics include:

- Cool-season forages and variety selection
- Monthly and seasonal forage production potential
- USDA web soil survey demonstration
- Establishment and fertilization
- Grazing and utilization strategies
- Impact of cool-season annuals on warm-season perennials
- Appropriate mineral supplementation
- Armyworms and other cool-season forage insects
- Estimated costs

9:30 Registration starts
10:00 Program starts
12:00 Lunch served
5:00 Adjourn

Register before August 5th: \$60/ person
Register before August 11th: \$75/person
Money back guarantee
(Includes lunch and program materials)

Register online at: <https://agriliferegister.tamu.edu>;
or call Extension Conference Services @ 979-845-2604

2 Pesticide CEUs Available (1 IPM and 1 general)

For more information on this program please contact
Michelle Sensing @ 903-834-6191.

Program Support and Sponsorship Provided by:



TEXAS A&M BEEF CATTLE SHORT COURSE

- AUGUST 3 - 5, 2015 -

The **Largest Beef Educational Event** In The Country



Registration fee:

\$180

(\$220 AFTER JULY 30TH)

COURSES INCLUDE:

- Over **20 SESSIONS** covering basic practices, new technologies, and hot topics
- **50+ HOURS** of training
- **120 Exhibitors Trade Show**
- **10 Pesticide CEUs**
- **20+ BQA Credits**
- Live animal demonstrations

COME ENJOY OUR *famous*
AGGIE PRIME RIB DINNER!



- Premier Sponsor -

979-845-6931 | extansc@ag.tamu.edu

 WWW.BEEFCATTLESHORTCOURSE.COM