

Winter Pastures for Central and East Texas

Tuesday, August 12, 2014

Texas A&M AgriLife Research and Extension Center
1710 N. Hwy 3053, Overton, TX 75684

**Reduce hay needs and winter-feeding expenses
by using winter pastures.**

Program presented by:
Drs. Vanessa Corriher-Olson and Jason Banta



Topics include:

- Cool-season forages and variety selection
- Monthly and seasonal forage production potential
- USDA web soil survey demonstration
- Establishment and fertilization
- Grazing and utilization strategies
- Impact of cool-season annuals on warm-season perennials
- Appropriate mineral supplementation
- Armyworms and other cool-season forage insects
- Estimated costs

9:30 Registration starts
10:00 Program starts
12:00 Lunch served
5:00 Adjourn

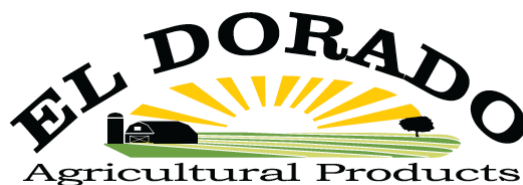
Register before August 5th: \$60/ person
Register before August 11th: \$75/person
Money back guarantee
(Includes lunch and program materials)

Register online at: <https://agriliferegister.tamu.edu>;
or call Extension Conference Services @ 979-845-2604

2 Pesticide CEUs Available (1 IPM and 1 general)

For more information on this program please contact
Michelle Sensing @ 903-834-6191.

Program Support and Sponsorship Provided by:

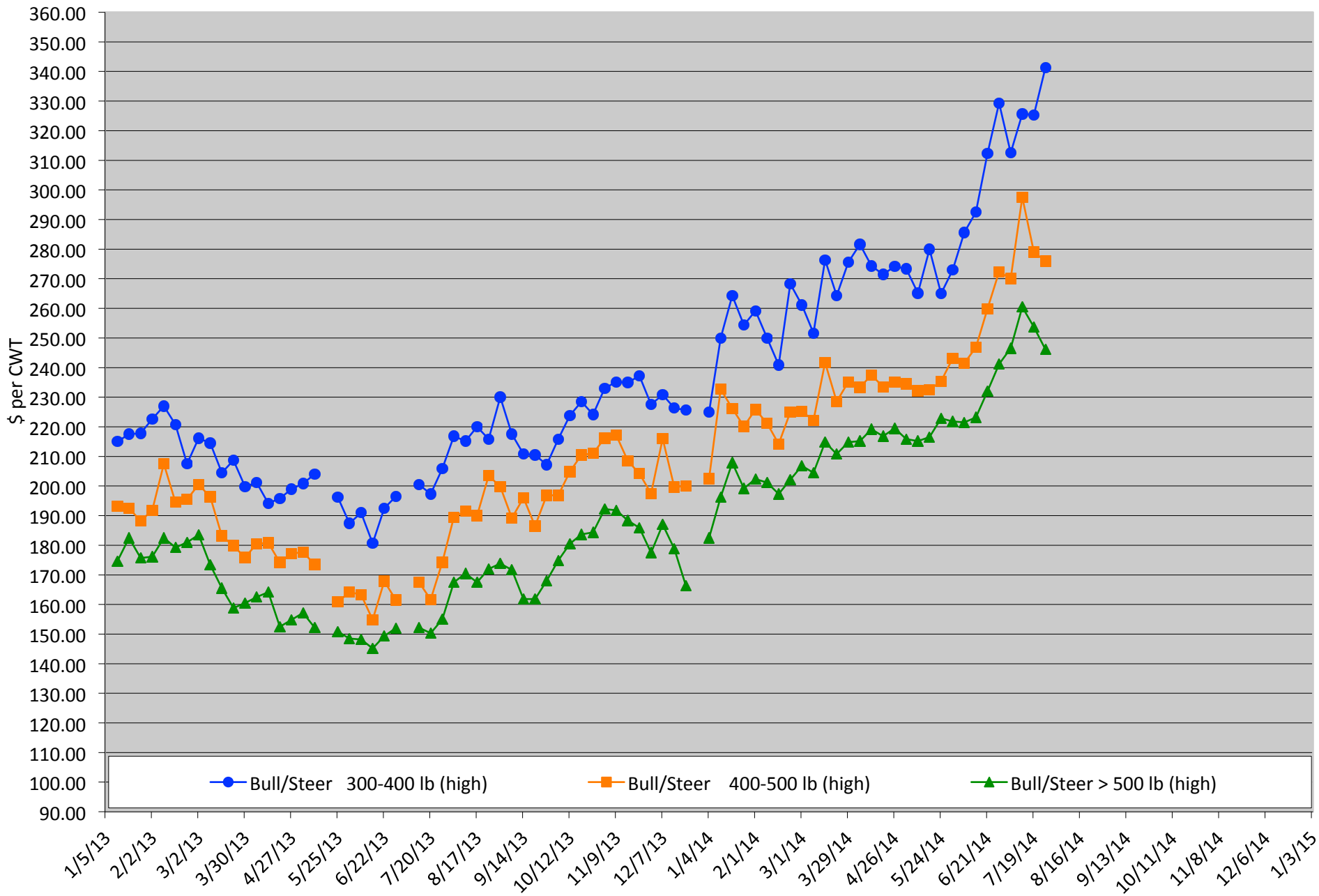


Calf Price Trends

Trend of Highest Prices Reported for Various Weight Calves, Average of 3 East Texas Livestock Auctions

For a weekly email copy of this chart please subscribe at <http://beefax.tamu.edu> or contact a Texas A&M AgriLife County Extension Agent

Chart created by Dr. Jason Banta, Extension Beef Cattle Specialist

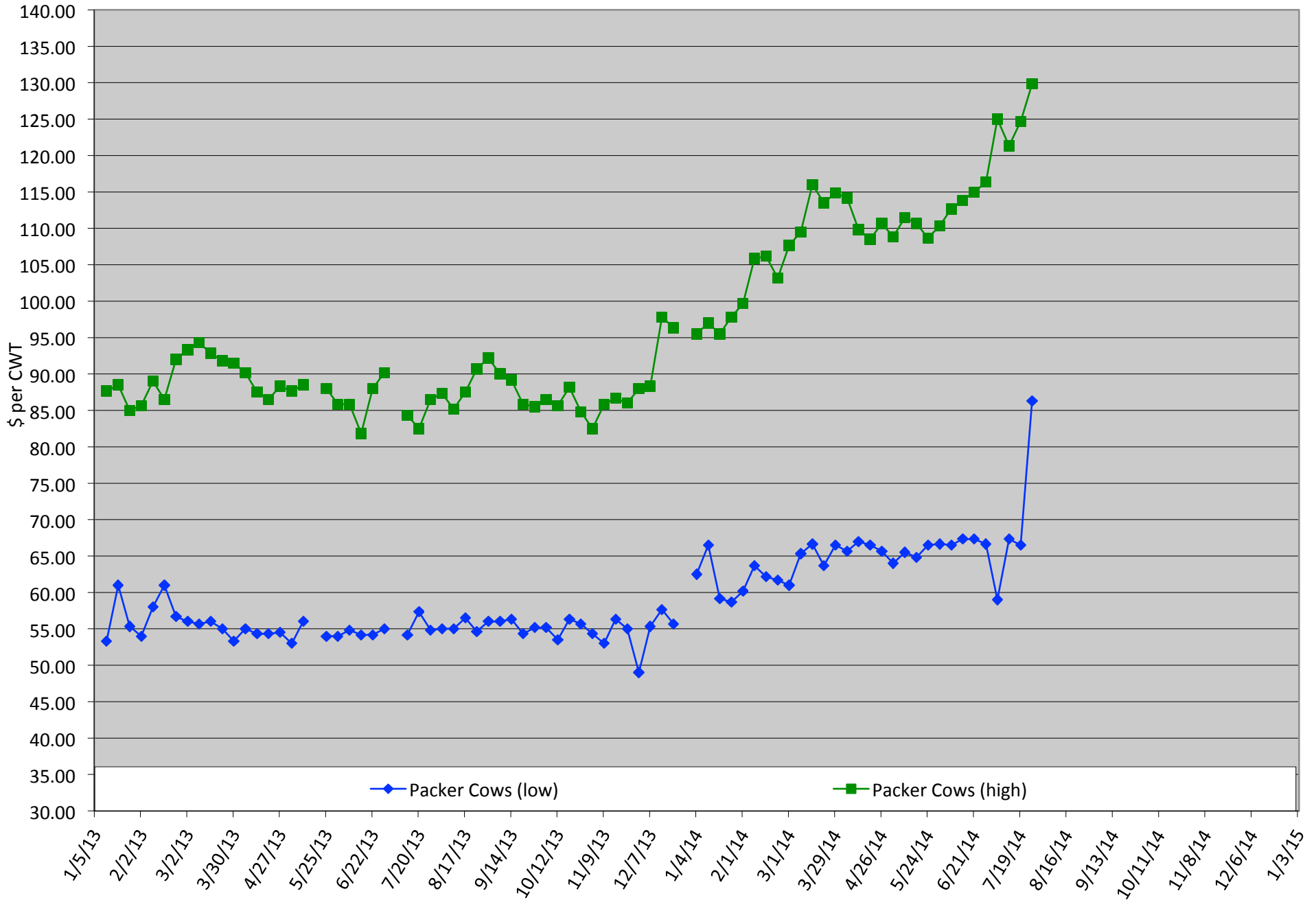


Packer Cow Price Trends

Trend of High and Low Prices Reported for Packer Cows, Average of 3 East Texas Livestock Auctions

For a weekly email copy of this chart please subscribe at <http://beeffax.tamu.edu> or contact a Texas A&M AgriLife County Extension Agent

Chart created by Dr. Jason Banta, Extension Beef Cattle Specialist

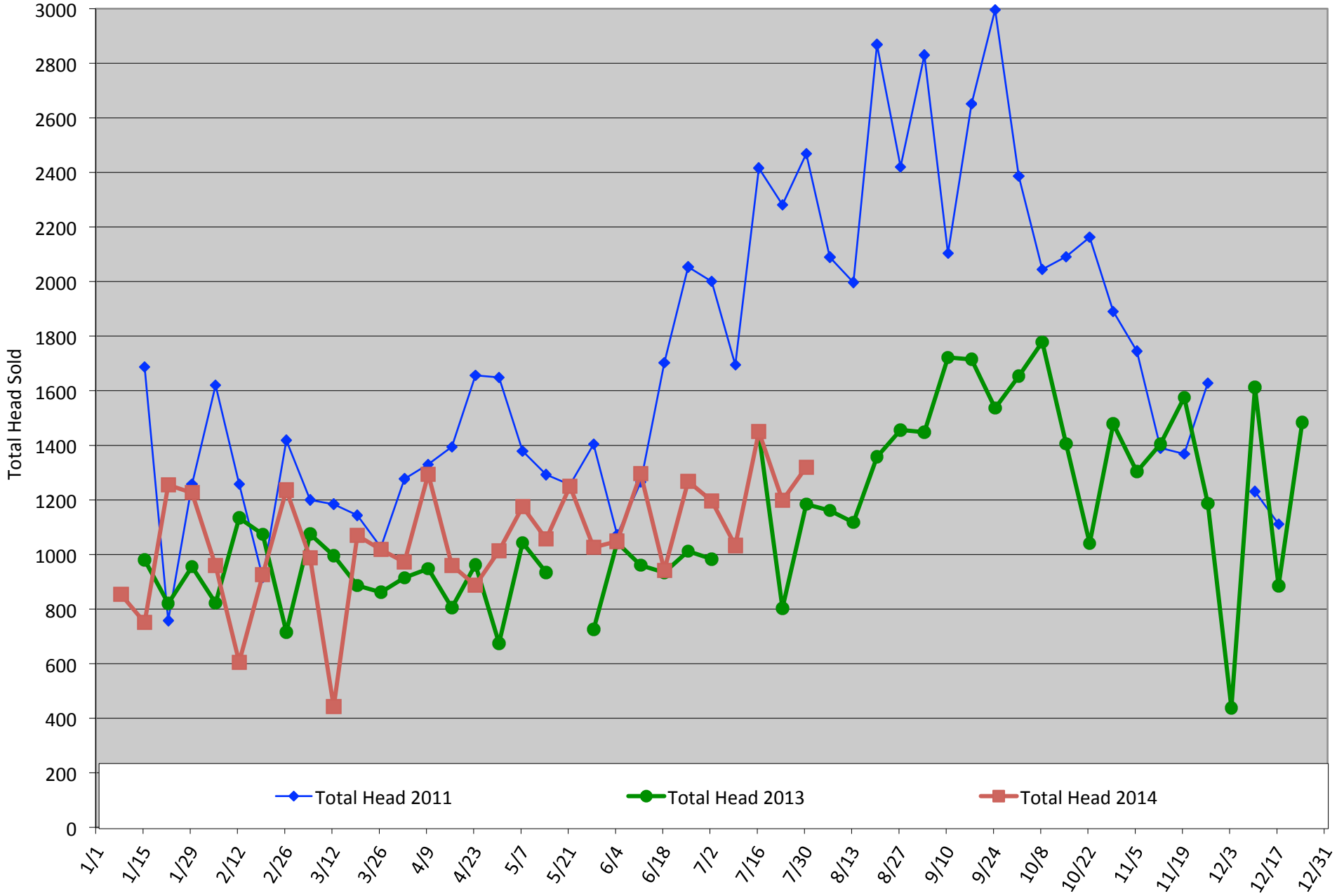


Total Head Sold Trends

Trend of Total Head Sold (Includes Bulls, Cows, and Calve, Average of 3 East Texas Livestock Auctions)

For a weekly email copy of this chart please subscribe at <http://beeffax.tamu.edu> or contact a Texas A&M AgriLife County Extension Agent

Chart created by Dr. Jason Banta, Extension Beef Cattle Specialist

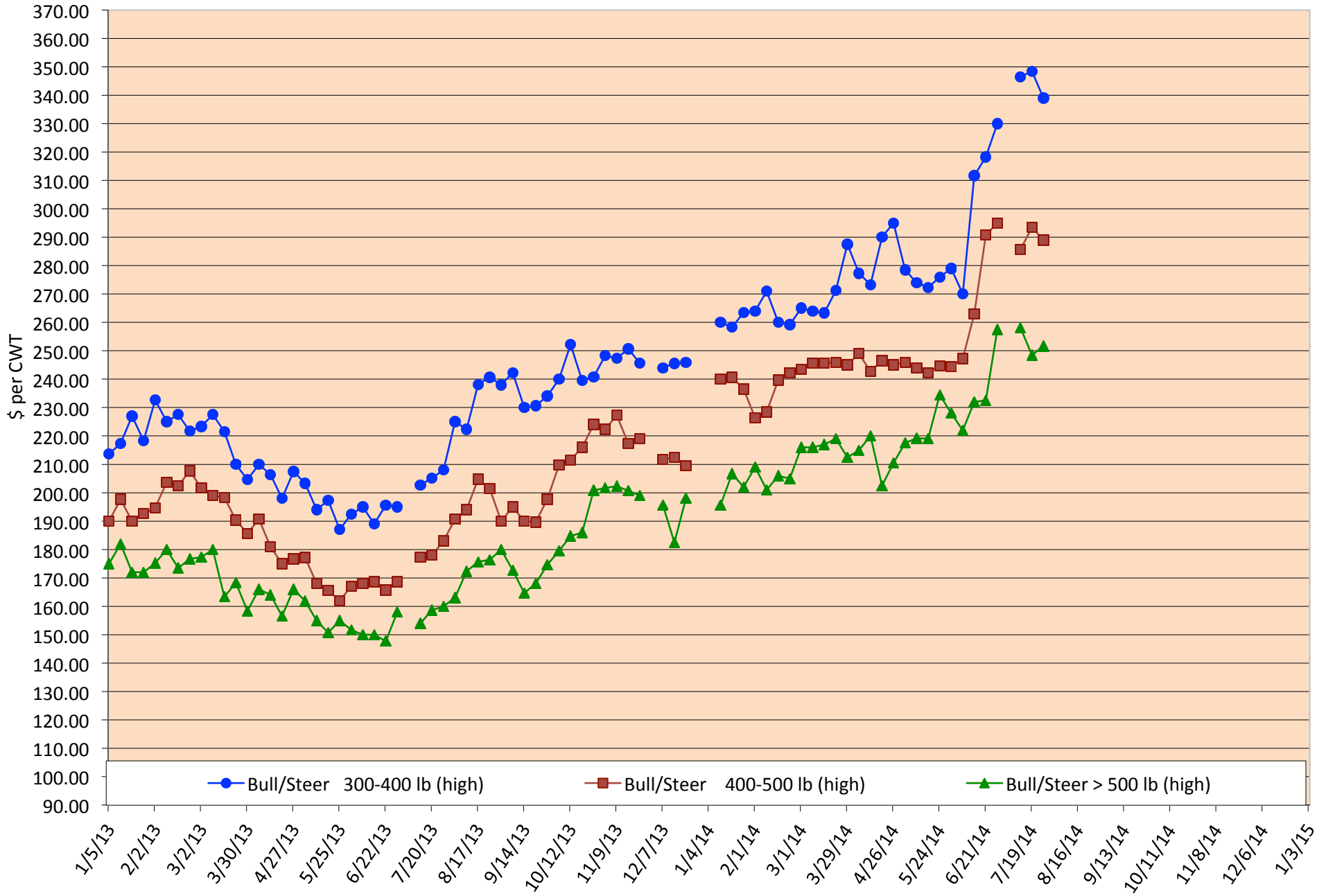


Calf Price Trends

Trend of Highest Prices Reported for Various Weight Calves, Average of 3 Central Texas Livestock Auctions

For a weekly email copy of this chart please subscribe at <http://beeffax.tamu.edu> or contact a Texas A&M AgriLife County Extension Agent

Chart created by Dr. Jason Banta, Extension Beef Cattle Specialist

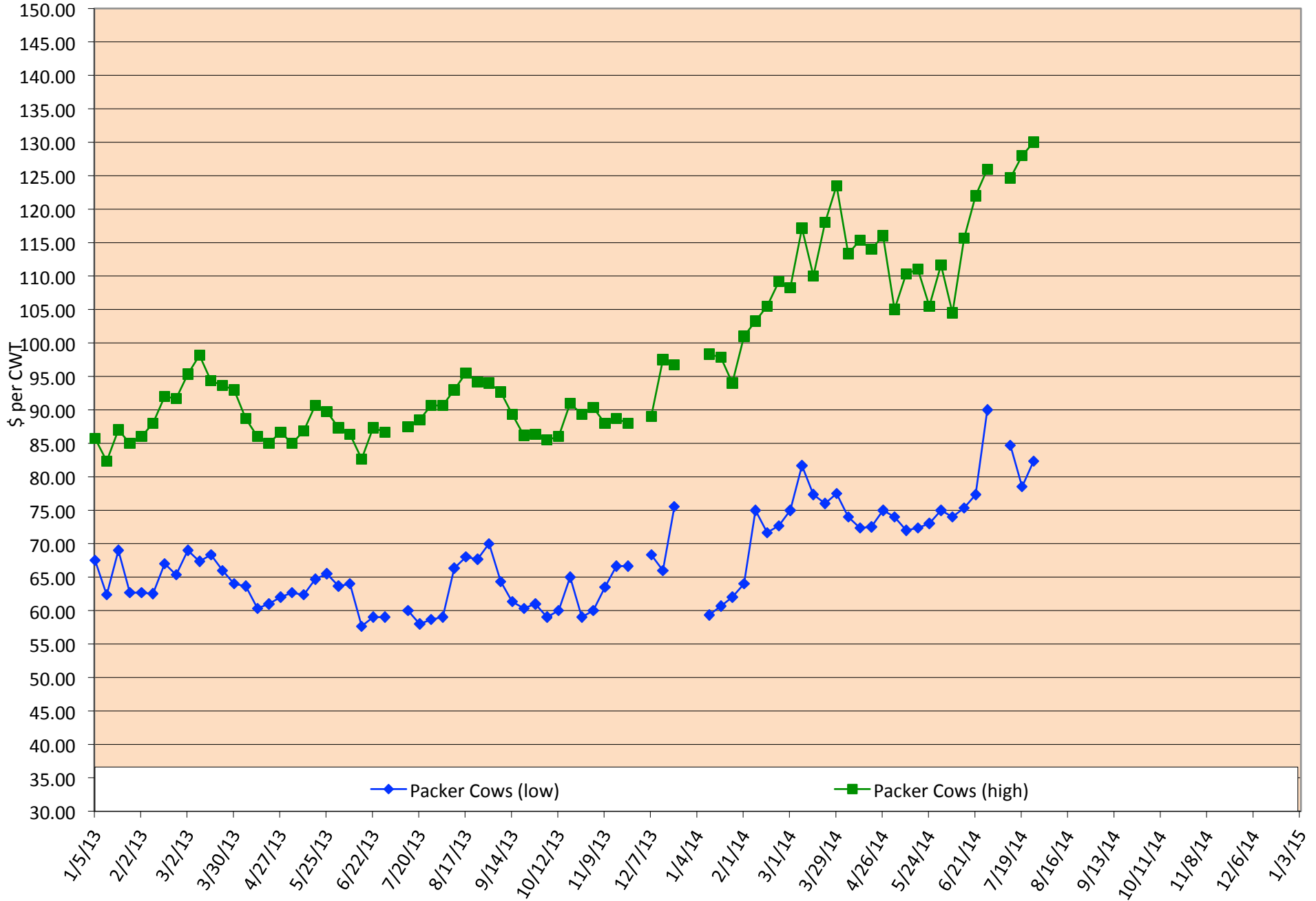


Packer Cow Price Trends

Trend of High and Low Prices Reported for Packer Cows, Average of 3 Central Texas Livestock Auctions

For a weekly email copy of this chart please subscribe at <http://beeffax.tamu.edu> or contact a Texas A&M AgriLife County Extension Agent

Chart created by Dr. Jason Banta, Extension Beef Cattle Specialist



Total Head Sold Trends

Trend of Total Head Sold (Includes Bulls, Cows, and Calves), Average of 3 Central Texas Livestock Auctions

For a weekly email copy of this chart please subscribe at <http://beeffax.tamu.edu> or contact a Texas A&M AgriLife County Extension Agent

Chart created by Dr. Jason Banta, Extension Beef Cattle Specialist

