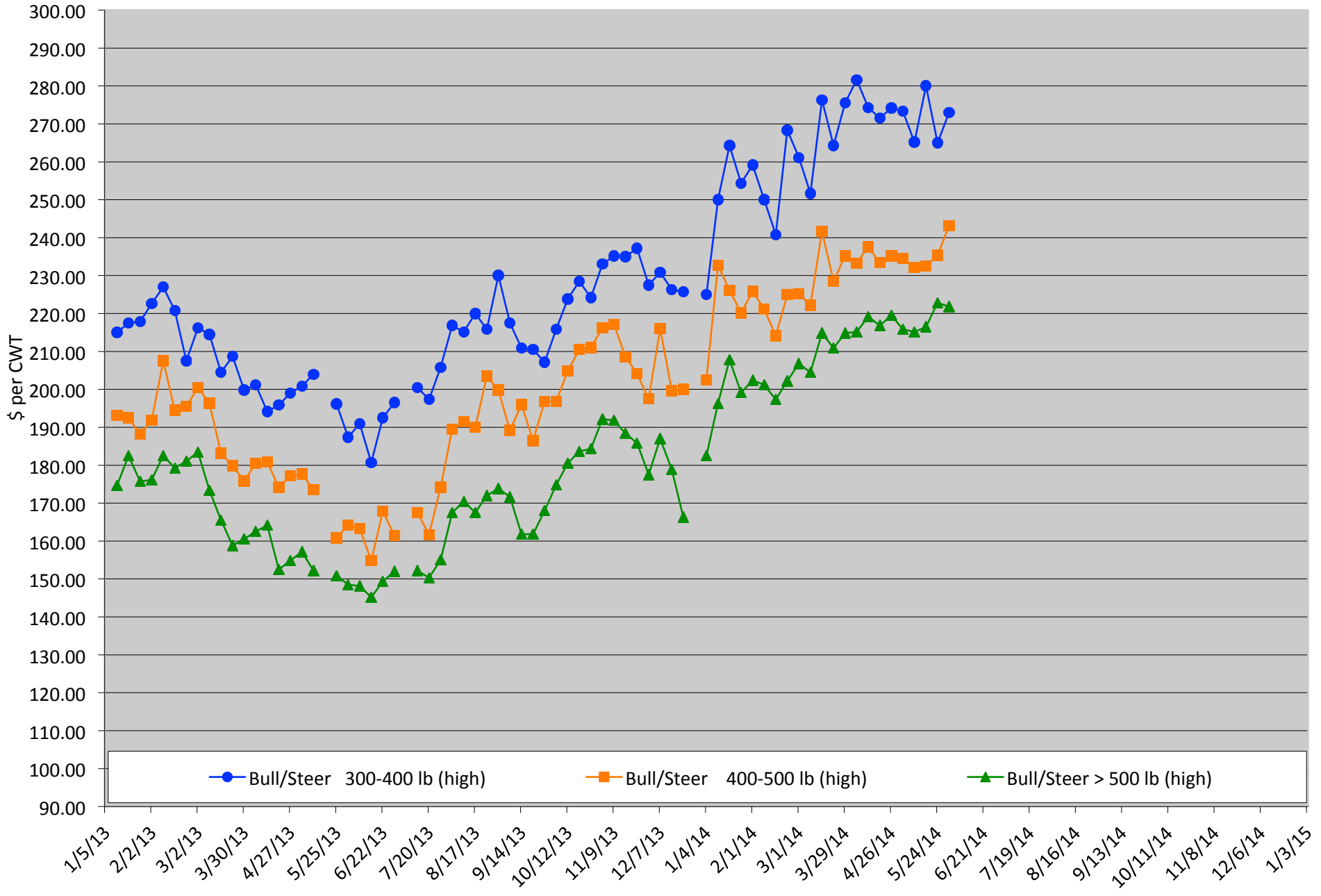


# Calf Price Trends

Trend of Highest Prices Reported for Various Weight Calves, Average of 3 East Texas Livestock Auctions

For a weekly email copy of this chart please subscribe at <http://beeffax.tamu.edu> or contact a Texas A&M AgriLife County Extension Agent

Chart created by Dr. Jason Banta, Extension Beef Cattle Specialist

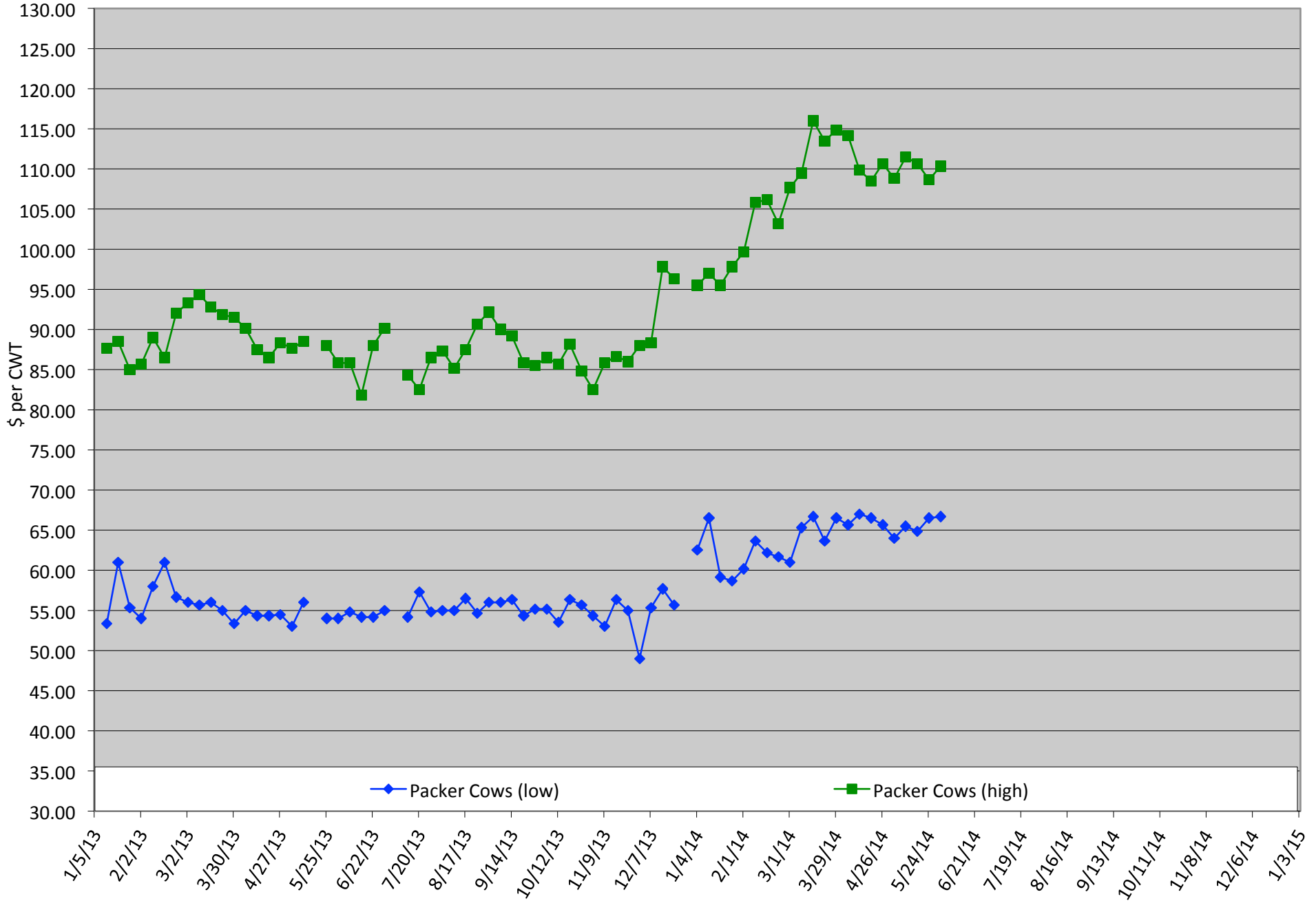


# Packer Cow Price Trends

Trend of High and Low Prices Reported for Packer Cows, Average of 3 East Texas Livestock Auctions

For a weekly email copy of this chart please subscribe at <http://beeffax.tamu.edu> or contact a Texas A&M AgriLife County Extension Agent

Chart created by Dr. Jason Banta, Extension Beef Cattle Specialist

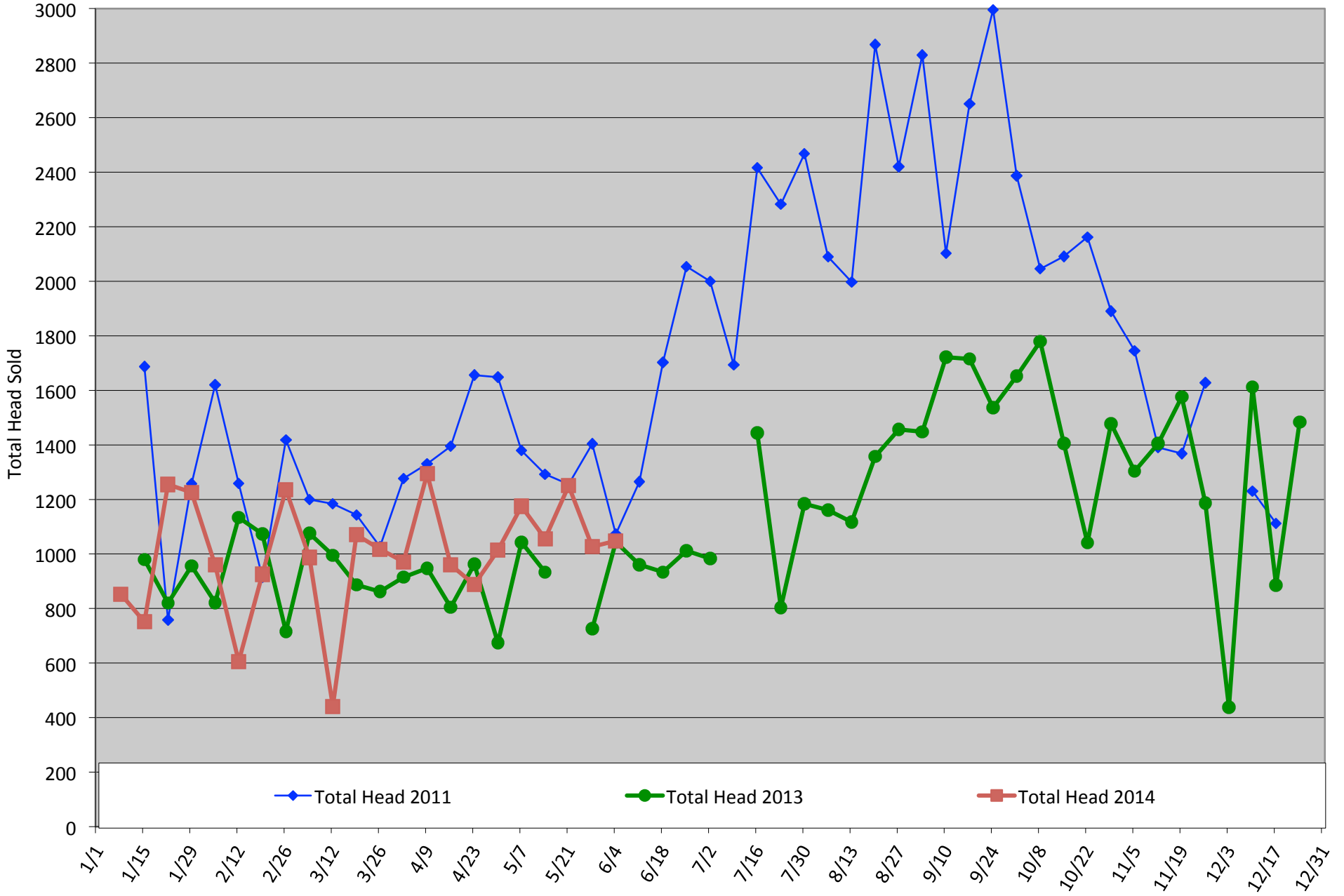


# Total Head Sold Trends

Trend of Total Head Sold (Includes Bulls, Cows, and Calve, Average of 3 East Texas Livestock Auctions)

For a weekly email copy of this chart please subscribe at <http://beeffax.tamu.edu> or contact a Texas A&M AgriLife County Extension Agent

Chart created by Dr. Jason Banta, Extension Beef Cattle Specialist



# Winter Pastures for Central and East Texas

**Tuesday, August 12, 2014**

Texas A&M AgriLife Research and Extension Center  
1710 N. Hwy 3053, Overton, TX 75684

**Reduce hay needs and winter-feeding expenses  
by using winter pastures.**

Program presented by:  
Drs. Vanessa Corriher-Olson and Jason Banta



Topics include:

- Cool-season forages and variety selection
- Monthly and seasonal forage production potential
- USDA web soil survey demonstration
- Establishment and fertilization
- Grazing and utilization strategies
- Impact of cool-season annuals on warm-season perennials
- Appropriate mineral supplementation
- Armyworms and other cool-season forage insects
- Estimated costs

**9:30 Registration starts**  
**10:00 Program starts**  
**12:00 Lunch served**  
**5:00 Adjourn**

**Register before August 5th: \$60/ person**  
Register before August 11th: \$75/person  
Money back guarantee  
(Includes lunch and program materials)

**Register online at: <https://agriliferegister.tamu.edu>;**  
or call Extension Conference Services @ 979-845-2604

*2 Pesticide CEUs Available (1 IPM and 1 general)*

For more information on this program please contact  
Michelle Sensing @ 903-834-6191.

**Program Support and Sponsorship Provided by:**





# I'll bet the beef is good.

It had better be. The Texas Beef Quality Producer program is all about the food.

The TBQP program was developed to assist cattlemen in producing a safer, more wholesome food product. Better beef management practices help deliver a better meal for the all-important consumer. Get ready to participate in an upcoming Texas Beef Quality Producer training near you.

The TBQP program is built upon a proven system of Best Management Practices. This half-day session allows producers to become BQA trained. You should get your seat reserved now because producers are finding the benefits go well beyond the ranch gate... through the livestock market, to the feedyard and most importantly, all the way to the consumer.

Our nation's Beef Quality Assurance (BQA) programs are vital. They help cattlemen give the consumer a wholesome eating experience – even with market cows and bulls. And a good eating experience with beef brings the consumer back for more.

Call or go online to RSVP for your seat.

Stacy Fox, TSCRA, [sfox@tskra.org](mailto:sfox@tskra.org)

**800-242-7820 • [www.texasbeefquality.com](http://www.texasbeefquality.com)**

**A collaborative effort of:**



## Next Event: Overton, TX - July 29, 2014

Texas A&M AgriLife Research and Extension Center

1710 N Hwy 3053

Overton, TX 75684

Registration - 9:30 a.m.

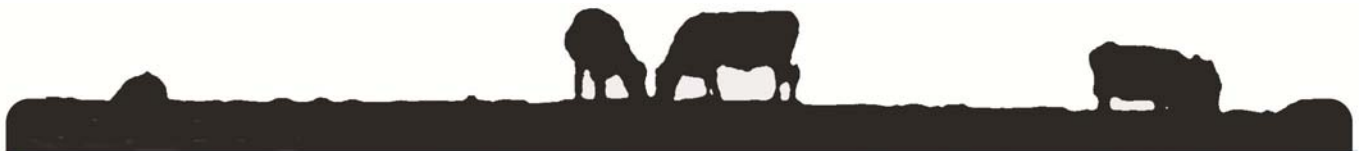
Program - 10:00 a.m.

Program should conclude around 3:00 pm

Lunch is included

Please RSVP to:

TSCRA at 800-242-7820



Training programs cover Beef Quality Assurance, industry updates, record keeping, environmental stewardship and proper management practices associated with genetic selection, cattle handling, culling, vaccination, drug use and more.

***Can't make the next training?***

**BQA certification is available online! Visit [www.texasbeefquality.com](http://www.texasbeefquality.com)**

A SPECIAL THANKS TO OUR SPONSOR





# I'll bet the beef is good.

It had better be. The Texas Beef Quality Producer program is all about the food.

The TBQP program was developed to assist cattlemen in producing a safer, more wholesome food product. Better beef management practices help deliver a better meal for the all-important consumer. Get ready to participate in an upcoming Texas Beef Quality Producer training near you.

The TBQP program is built upon a proven system of Best Management Practices. This half-day session allows producers to become BQA trained. You should get your seat reserved now because producers are finding the benefits go well beyond the ranch gate... through the livestock market, to the feedyard and most importantly, all the way to the consumer.

Our nation's Beef Quality Assurance (BQA) programs are vital. They help cattlemen give the consumer a wholesome eating experience – even with market cows and bulls. And a good eating experience with beef brings the consumer back for more.

Call or go online to RSVP for your seat.

Stacy Fox, TSCRA, [sfox@tskra.org](mailto:sfox@tskra.org)

**800-242-7820 • [www.texasbeefquality.com](http://www.texasbeefquality.com)**

**A collaborative effort of:**

TEXAS A&M  
**AGRI LIFE**  
EXTENSION



## Next Event: Fort Worth, Texas - June 26, 2014

Texas and Southwestern Cattle Raisers Assn Headquarters Brand Room

1301 W 7th Street

Fort Worth, TX 76102

Registration - 9:30 a.m.

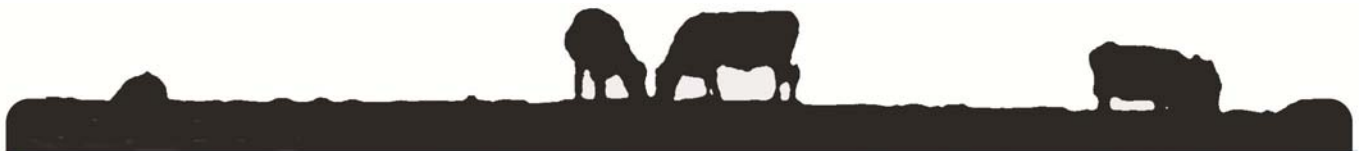
Program - 10:00 a.m.

Program should conclude around 3:00 pm

Lunch is included

Please RSVP to:

TSCRA at 800-242-7820



Training programs cover Beef Quality Assurance, industry updates, record keeping, environmental stewardship and proper management practices associated with genetic selection, cattle handling, culling, vaccination, drug use and more.

***Can't make the next training?***

**BQA certification is available online! Visit [www.texasbeefquality.com](http://www.texasbeefquality.com)**

A SPECIAL THANKS TO OUR SPONSOR

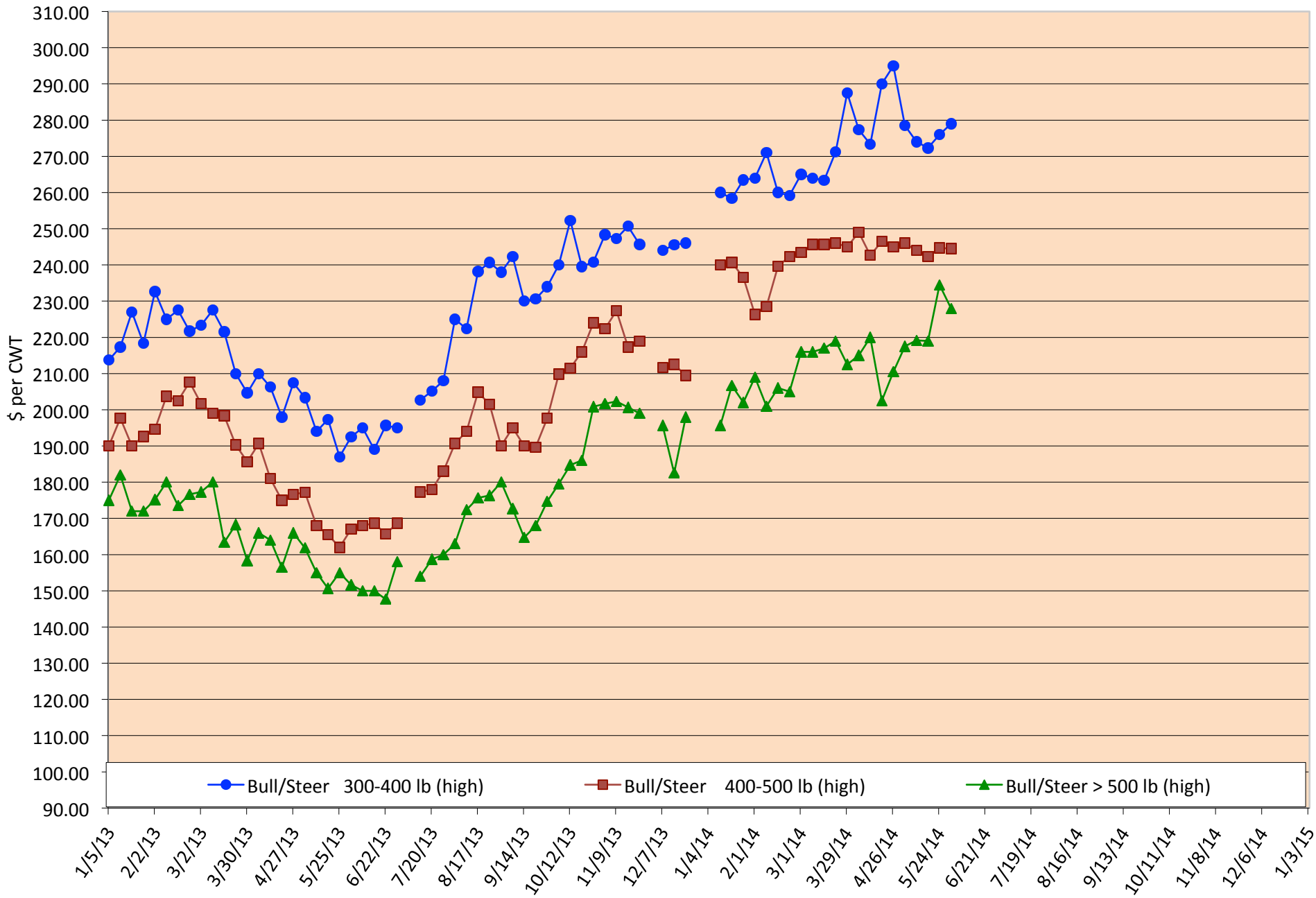
**zoetis**<sup>TM</sup>

# Calf Price Trends

Trend of Highest Prices Reported for Various Weight Calves, Average of 3 Central Texas Livestock Auctions

For a weekly email copy of this chart please subscribe at <http://beefax.tamu.edu> or contact a Texas A&M AgriLife County Extension Agent

Chart created by Dr. Jason Banta, Extension Beef Cattle Specialist

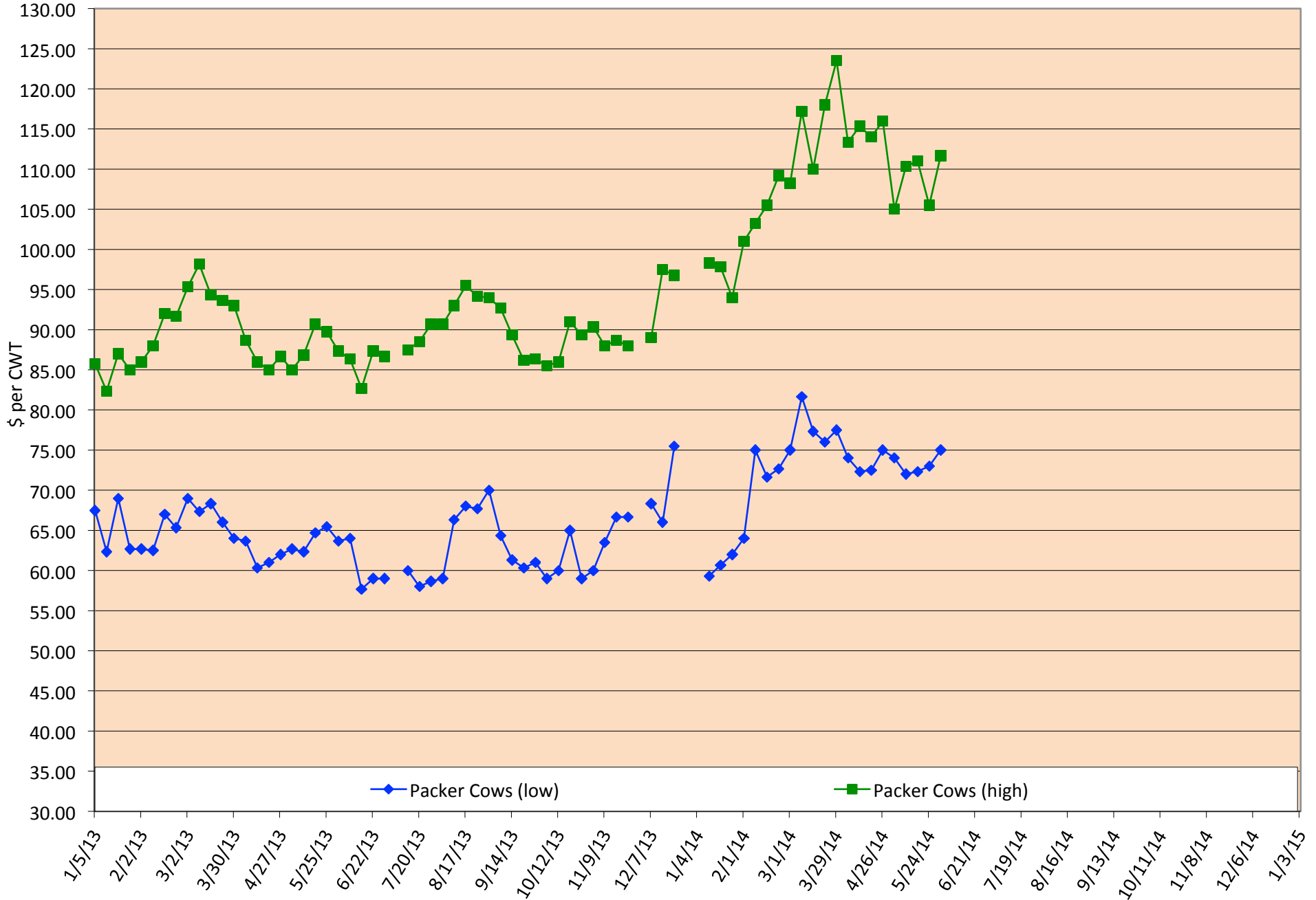


# Packer Cow PriceTrends

Trend of High and Low Prices Reported for Packer Cows, Average of 3 Central Texas Livestock Auctions

For a weekly email copy of this chart please subscribe at <http://beeffax.tamu.edu> or contact a Texas A&M AgriLife County Extension Agent

Chart created by Dr. Jason Banta, Extension Beef Cattle Specialist





# Total Head Sold Trends

Trend of Total Head Sold (Includes Bulls, Cows, and Calves), Average of 3 Central Texas Livestock Auctions

For a weekly email copy of this chart please subscribe at <http://beeffax.tamu.edu> or contact a Texas A&M AgriLife County Extension Agent

Chart created by Dr. Jason Banta, Extension Beef Cattle Specialist

