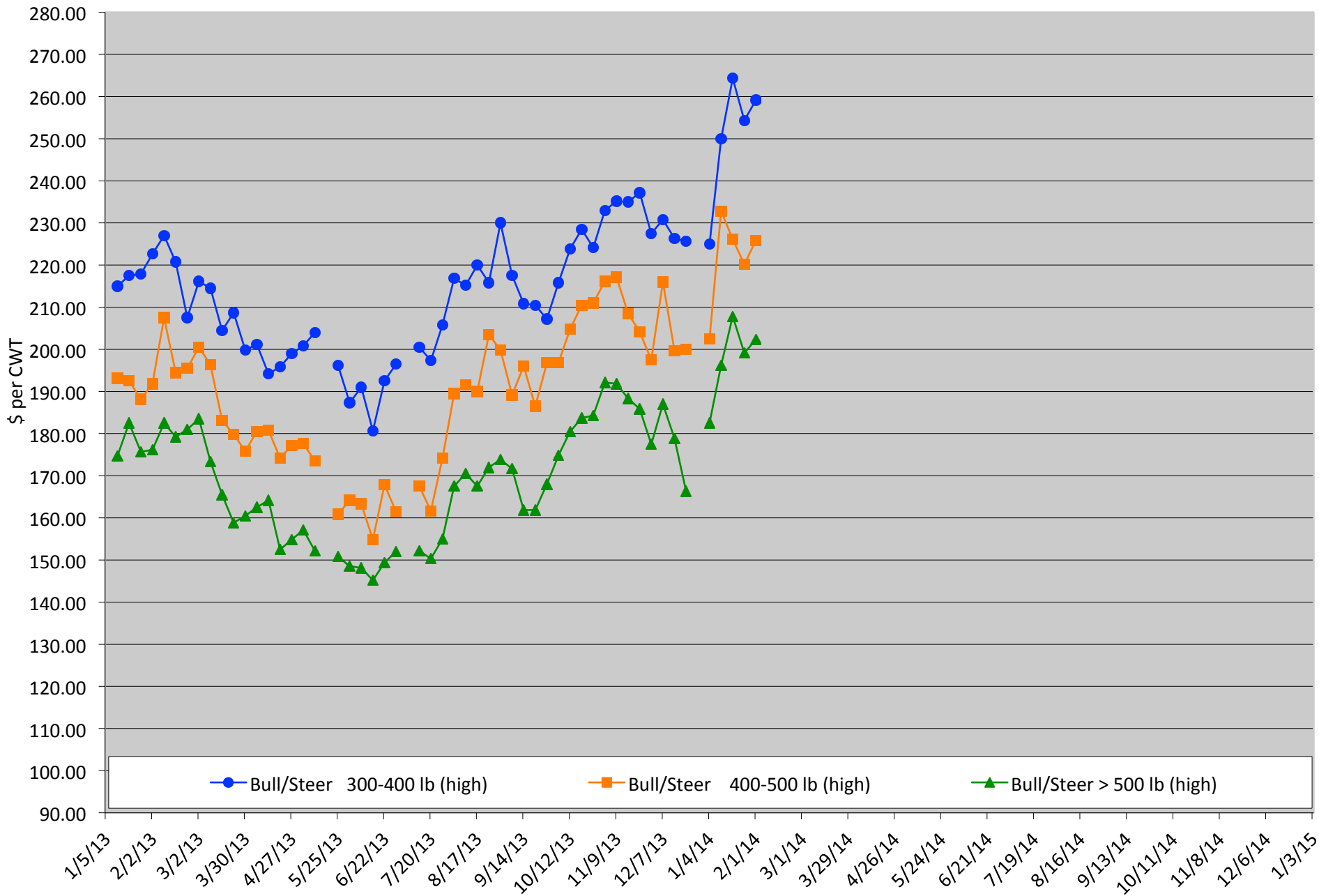


Calf Price Trends

Trend of Highest Prices Reported for Various Weight Calves, Average of 3 East Texas Livestock Auctions

For a weekly email copy of this chart please subscribe at <http://beeffax.tamu.edu> or contact a Texas A&M AgriLife County Extension Agent

Chart created by Dr. Jason Banta, Extension Beef Cattle Specialist

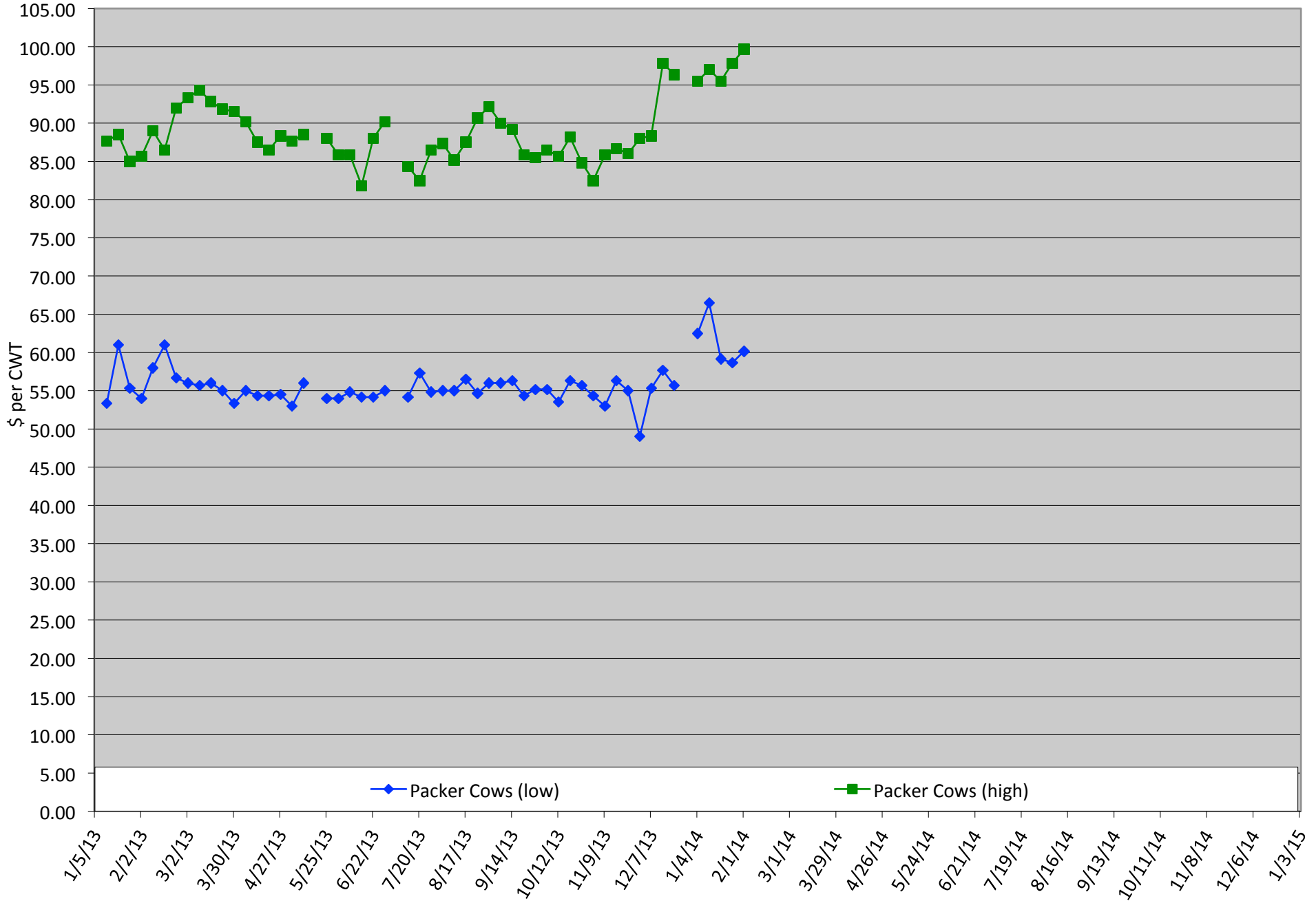


Packer Cow PriceTrends

Trend of High and Low Prices Reported for Packer Cows, Average of 3 East Texas Livestock Auctions

For a weekly email copy of this chart please subscribe at <http://beeffax.tamu.edu> or contact a Texas A&M AgriLife County Extension Agent

Chart created by Dr. Jason Banta, Extension Beef Cattle Specialist

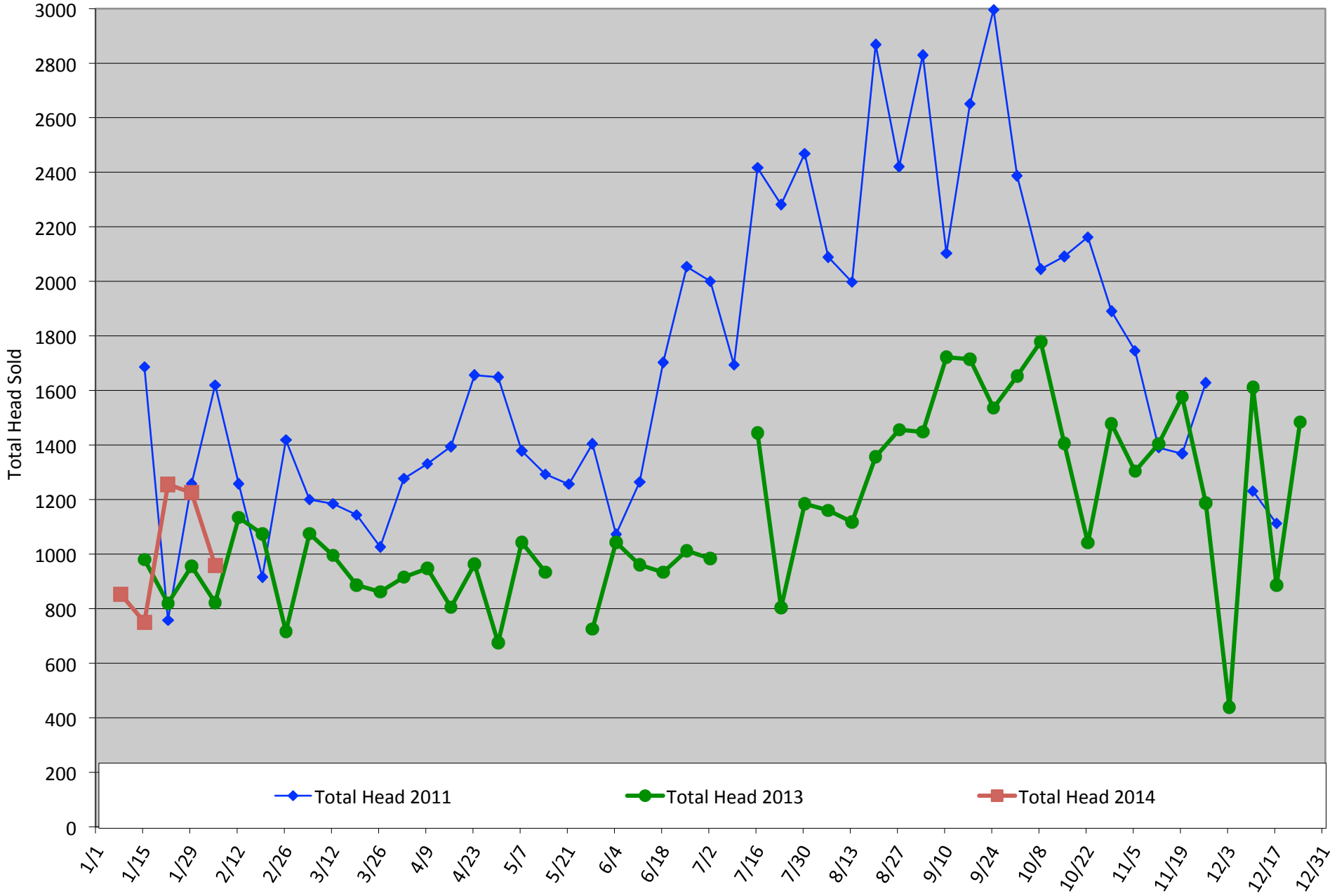


Total Head Sold Trends

Trend of Total Head Sold (Includes Bulls, Cows, and Calve, Average of 3 East Texas Livestock Auctions)

For a weekly email copy of this chart please subscribe at <http://beeffax.tamu.edu> or contact a Texas A&M AgriLife County Extension Agent

Chart created by Dr. Jason Banta, Extension Beef Cattle Specialist



East Texas Pasture Management Program

Friday, February 21, 2014

Texas A&M AgriLife Research and Extension Center
1710 N. Hwy 3053, Overton, TX 75684



A herbicide price comparison CD, updated for 2014, will be provided to help you make more economical choices when it comes to selecting a herbicide. **During this half a day program Drs. Vanessa Corriher-Olson, Jason Banta and invited speakers will cover the following topics:**

- Save money by understanding active ingredients, residual control and herbicide cost
- Test your knowledge with a hands on weed identification
- Grasshopper and fall armyworm control
- Spray adjuvants and additives
- Chemicals and hormones: They are everywhere!

Preregister by Feb. 20, 2014: Cost: \$25/ person
On-Site Registration Cost: \$30/person

(includes 2014 Herbicide Price Comparison CD)

Register online at:

<https://agriliferegister.tamu.edu/pasture>

or call Extension Conference Services @ 979-845-2604



5 Pesticide CEUs Available (1 laws, 1 IPM and 3 general)

12:30 Registration starts

1:00 Program starts

6:00 Adjourn

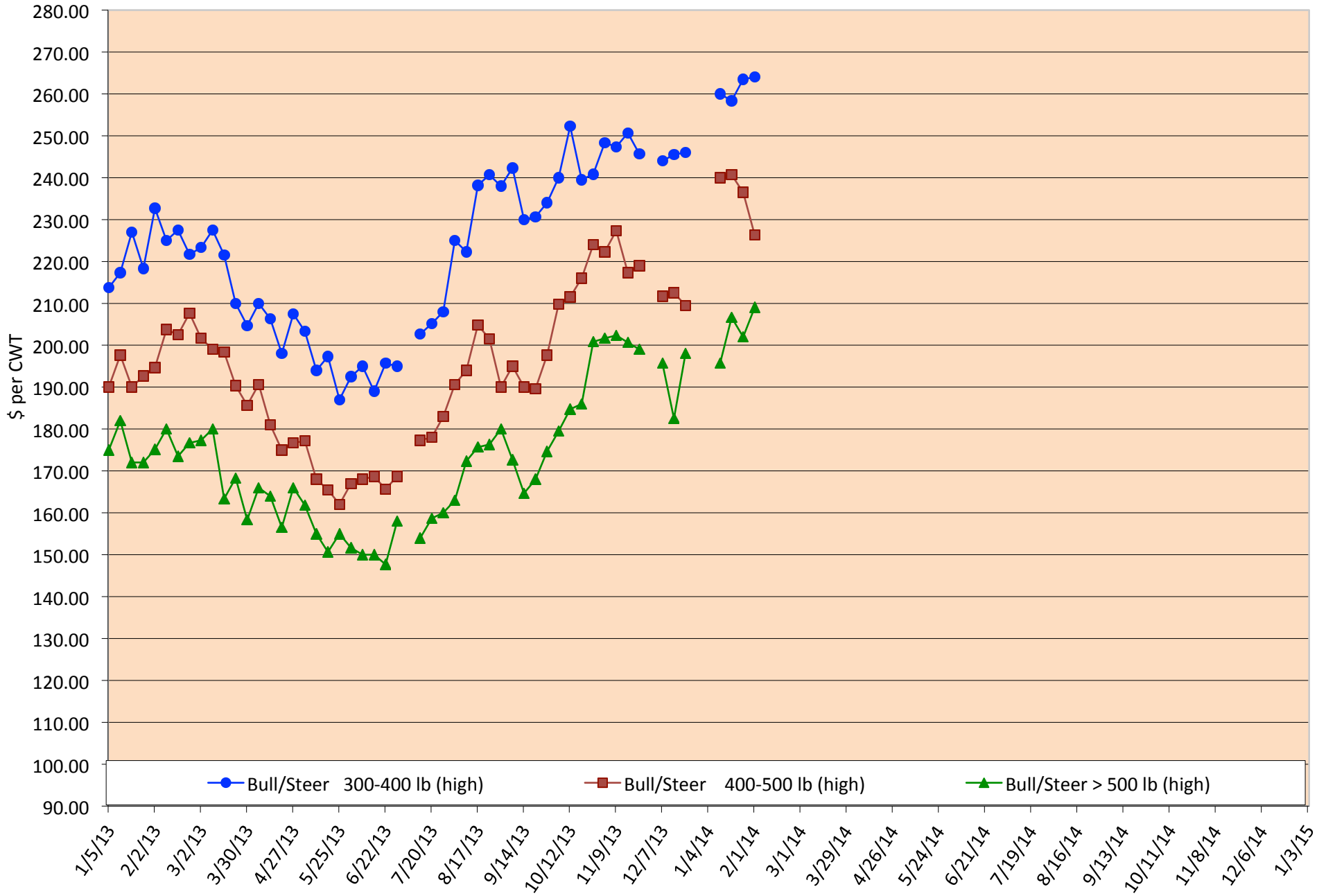
For more information on this program please contact Michelle Sensing @ 903-834-6191.

Calf Price Trends

Trend of **Highest Prices Reported for Various Weight Calves, Average of 3 Central Texas Livestock Auctions**

For a weekly email copy of this chart please subscribe at <http://beeffax.tamu.edu> or contact a Texas A&M AgriLife County Extension Agent

Chart created by Dr. Jason Banta, Extension Beef Cattle Specialist

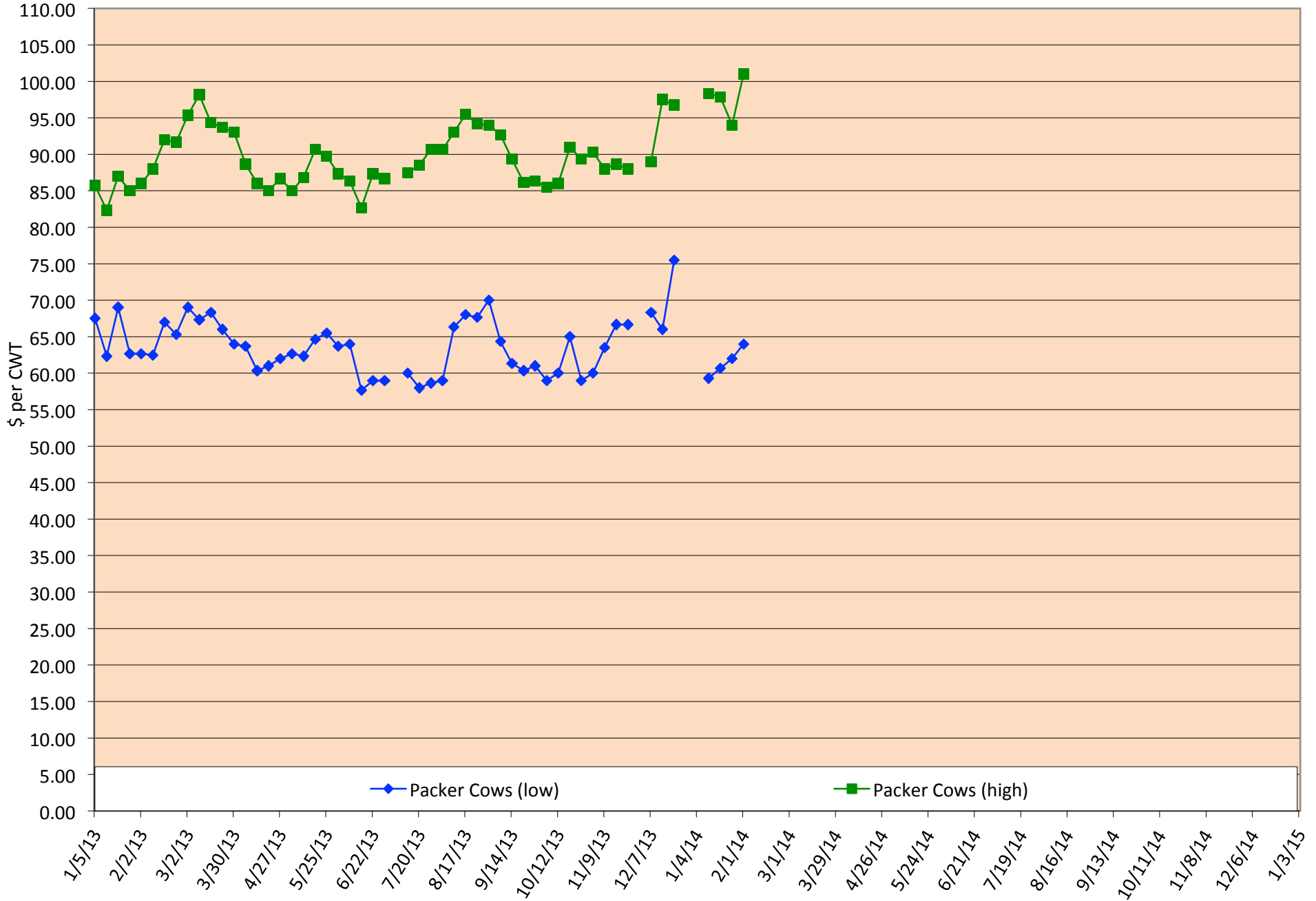


Packer Cow Price Trends

Trend of High and Low Prices Reported for Packer Cows, Average of 3 Central Texas Livestock Auctions

For a weekly email copy of this chart please subscribe at <http://beeffax.tamu.edu> or contact a Texas A&M AgriLife County Extension Agent

Chart created by Dr. Jason Banta, Extension Beef Cattle Specialist

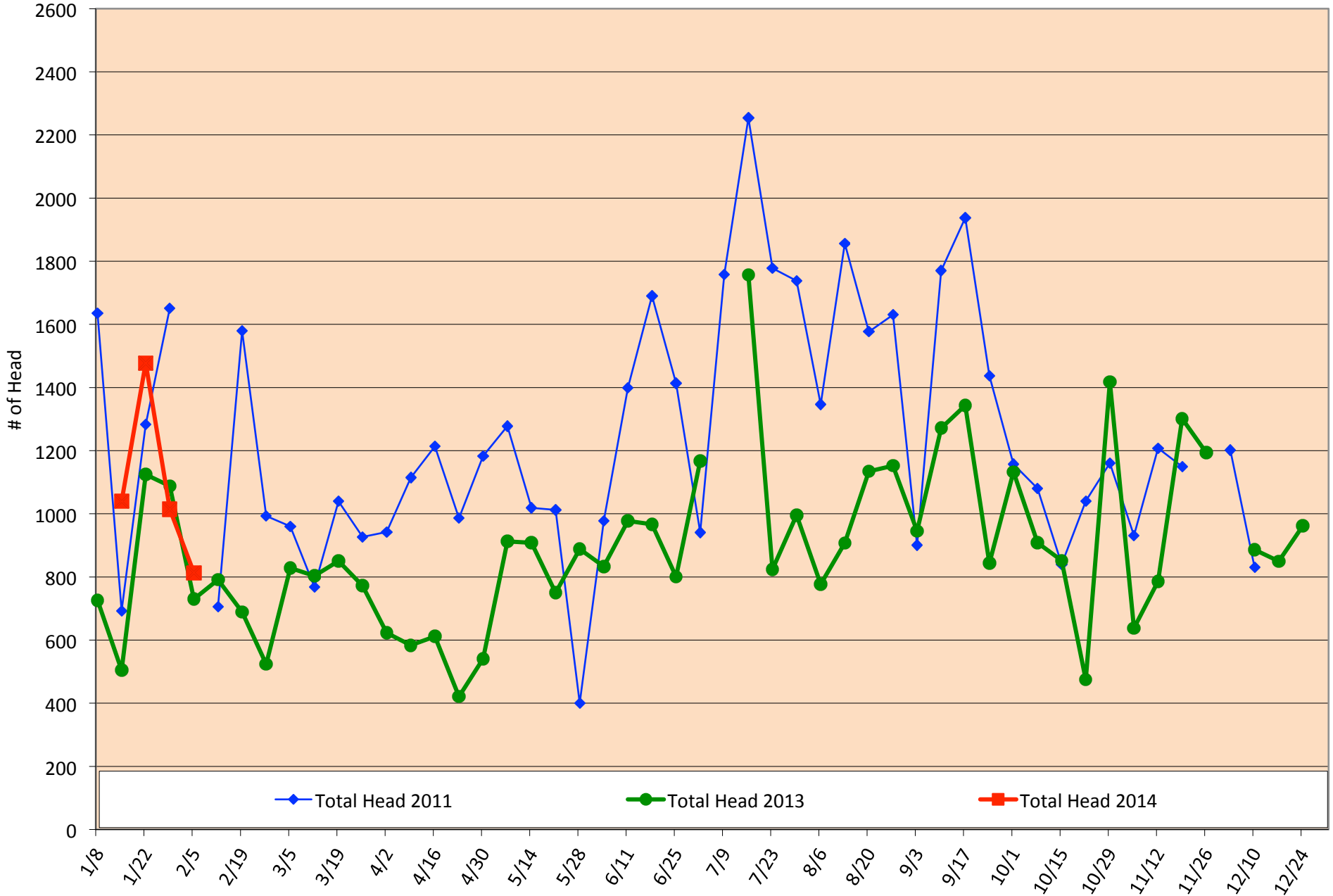


Total Head Sold Trends

Trend of Total Head Sold (Includes Bulls, Cows, and Calves), Average of 3 Central Texas Livestock Auctions

For a weekly email copy of this chart please subscribe at <http://beeffax.tamu.edu> or contact a Texas A&M AgriLife County Extension Agent

Chart created by Dr. Jason Banta, Extension Beef Cattle Specialist





Released January 31, 2014, by the National Agricultural Statistics Service (NASS), Agricultural Statistics Board, United States Department of Agriculture (USDA).

January 1 Cattle Inventory Down 2 Percent

All cattle and calves in the United States as of January 1, 2014 totaled 87.7 million head, 2 percent below the 89.3 million on January 1, 2013. This is the lowest January 1 inventory of all cattle and calves since the 82.1 million on hand in 1951.

All cows and heifers that have calved, at 38.3 million, were down 1 percent from the 38.5 million on January 1, 2013. This is the lowest January 1 inventory of all cows and heifers that have calved since the 36.8 million head in 1941.

- Beef cows, at 29.0 million, were down 1 percent from January 1, 2013.
- Milk cows, at 9.2 million, unchanged from January 1, 2013.

Other class estimates on January 1, 2014 and the change from January 1, 2013, are as follows:

- All heifers 500 pounds and over, 18.8 million, down 2 percent.
- Beef replacement heifers, 5.5 million, up 2 percent.
- Milk replacement heifers, 4.5 million, unchanged.
- Other heifers, 8.7 million, down 5 percent.
- Steers weighing 500 pounds and over, 15.4 million, down 3 percent.
- Bulls weighing 500 pounds and over, 2.0 million, down 1 percent.
- Calves under 500 pounds, 13.3 million, down 4 percent.
- Cattle and calves on feed for slaughter in all feedlots, 12.7 million, down 5 percent.
- The combined total of calves under 500 pounds, and other heifers and steers over 500 pounds outside of feedlots was 24.7 million, down 3 percent.

Calf Crop Down 1 Percent

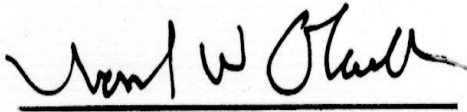
The 2013 calf crop was estimated at 33.9 million head, down 1 percent from 2012. This is the smallest calf crop since the 33.7 million born during 1949. Calves born during the first half of 2013 are estimated at 24.7 million, down 1 percent from 2012.

Revisions

All inventory and calf crop estimates for January 1, 2013 were reviewed using calf crop, official slaughter, import and export data, and the relationship of new survey information to the prior surveys. Based on the findings of this review, small adjustments of less than one-half percent were made to previously released inventory estimates by class.

State level estimates were reviewed and changes were made to reallocate inventory estimates to the United States total.

This report was approved on January 31, 2014.



Acting Secretary of
Agriculture
Joseph W. Glauber



Agricultural Statistics Board
Chairperson
Hubert Hamer

Contents

Cattle Inventory by Class and Calf Crop – United States: January 1, 2013 and 2014.....	4
Cattle Inventory – United States: January 1.....	4
Cattle Inventory by Class – States and United States: January 1, 2013 and 2014.....	5
Calf Crop – States and United States: 2012 and 2013	9
Total Number of Cattle on Feed – States and United States: January 1, 2013 and 2014.....	10
Number of Cattle Grazing on Small Grain Pasture – 3-State Total: January 1, 2013 and 2014.....	11
Calf Crop and Percent of Total by Six Month Period – United States: 2012 and 2013.....	11
Statistical Methodology	12
Reliability of January 1 Cattle Estimates	13
Information Contacts	13

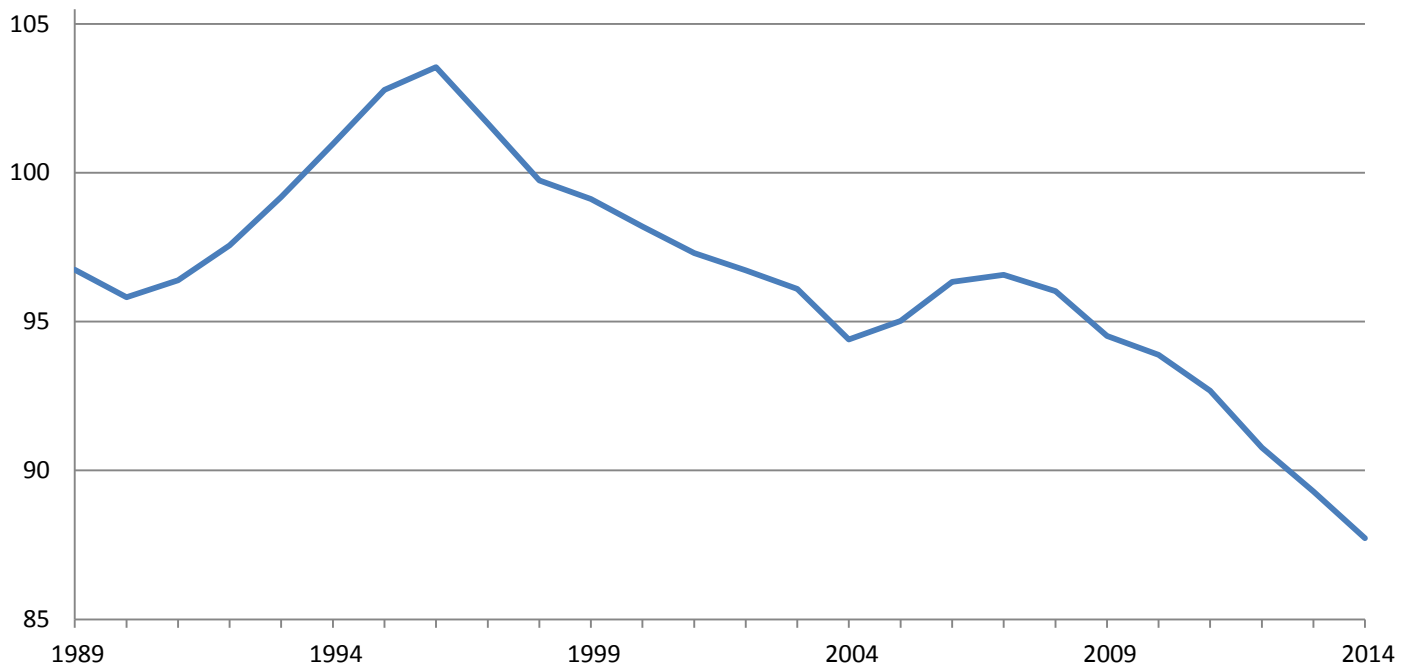
Cattle Inventory by Class and Calf Crop – United States: January 1, 2013 and 2014

Class	2013	2014	Percent of previous year
	(1,000 head)	(1,000 head)	(percent)
Cattle and calves	89,299.6	87,730.0	98
Cows and heifers that have calved	38,515.2	38,251.0	99
Beef cows	29,297.3	29,042.4	99
Milk cows	9,217.9	9,208.6	100
Heifers 500 pounds and over	19,133.9	18,751.4	98
For beef cow replacement	5,380.6	5,470.8	102
Expected to calve ¹	3,280.3	3,319.1	101
For milk cow replacement	4,550.7	4,539.2	100
Expected to calve ¹	2,928.4	2,980.7	102
Other heifers	9,202.6	8,741.4	95
Steers 500 pounds and over	15,812.7	15,414.9	97
Bulls 500 pounds and over	2,055.8	2,034.8	99
Calves under 500 pounds	13,782.0	13,277.9	96
Cattle on feed	13,363.7	12,695.3	95
	2012	2013	Percent of previous year
Calf crop	34,279.0	33,930.0	99

¹ Replacement heifers expected to calve during the year.

Cattle Inventory – United States: January 1

Million head



Cattle Inventory by Class – States and United States: January 1, 2013 and 2014

State	All cattle and calves			All cows that have calved		
	2013	2014	Percent of previous year	2013	2014	Percent of previous year
	(1,000 head)	(1,000 head)	(percent)	(1,000 head)	(1,000 head)	(percent)
Alabama	1,220.0	1,240.0	102	660.0	680.0	103
Alaska	12.0	10.0	83	5.3	4.6	87
Arizona	900.0	920.0	102	365.0	370.0	101
Arkansas	1,600.0	1,660.0	104	860.0	890.0	103
California	5,300.0	5,250.0	99	2,390.0	2,380.0	100
Colorado	2,600.0	2,480.0	95	850.0	840.0	99
Connecticut	48.0	47.0	98	24.0	23.0	96
Delaware	18.0	16.0	89	8.5	7.5	88
Florida	1,660.0	1,620.0	98	1,030.0	1,000.0	97
Georgia	1,020.0	1,000.0	98	570.0	560.0	98
Hawaii	132.0	130.0	98	72.0	71.0	99
Idaho	2,370.0	2,190.0	92	1,090.0	1,010.0	93
Illinois	1,120.0	1,130.0	101	460.0	455.0	99
Indiana	810.0	870.0	107	365.0	370.0	101
Iowa	3,850.0	3,700.0	96	1,130.0	1,090.0	96
Kansas	5,850.0	5,800.0	99	1,460.0	1,550.0	106
Kentucky	2,240.0	2,090.0	93	1,100.0	1,080.0	98
Louisiana	780.0	790.0	101	470.0	465.0	99
Maine	85.0	85.0	100	43.0	41.0	95
Maryland	192.0	182.0	95	92.0	88.0	96
Massachusetts	39.0	39.0	100	19.0	18.0	95
Michigan	1,120.0	1,120.0	100	490.0	495.0	101
Minnesota	2,390.0	2,280.0	95	840.0	810.0	96
Mississippi	910.0	930.0	102	500.0	490.0	98
Missouri	3,650.0	3,800.0	104	1,850.0	1,910.0	103
Montana	2,600.0	2,550.0	98	1,520.0	1,490.0	98
Nebraska	6,300.0	6,150.0	98	1,860.0	1,850.0	99
Nevada	460.0	455.0	99	260.0	255.0	98
New Hampshire	33.0	32.0	97	17.0	16.5	97
New Jersey	31.0	29.0	94	16.0	15.0	94
New Mexico	1,340.0	1,290.0	96	710.0	710.0	100
New York	1,400.0	1,450.0	104	700.0	720.0	103
North Carolina	820.0	810.0	99	410.0	405.0	99
North Dakota	1,790.0	1,770.0	99	940.0	960.0	102
Ohio	1,230.0	1,250.0	102	560.0	560.0	100
Oklahoma	4,200.0	4,300.0	102	1,800.0	1,850.0	103
Oregon	1,280.0	1,280.0	100	650.0	640.0	98
Pennsylvania	1,610.0	1,620.0	101	690.0	700.0	101
Rhode Island	4.6	5.0	109	2.4	2.4	100
South Carolina	355.0	360.0	101	190.0	190.0	100
South Dakota	3,850.0	3,650.0	95	1,780.0	1,730.0	97
Tennessee	1,830.0	1,760.0	96	960.0	910.0	95
Texas	11,300.0	10,900.0	96	4,450.0	4,350.0	98
Utah	770.0	800.0	104	405.0	420.0	104
Vermont	270.0	260.0	96	146.0	144.0	99
Virginia	1,610.0	1,530.0	95	780.0	750.0	96
Washington	1,150.0	1,100.0	96	485.0	475.0	98
West Virginia	410.0	380.0	93	210.0	200.0	95
Wisconsin	3,450.0	3,350.0	97	1,530.0	1,510.0	99
Wyoming	1,290.0	1,270.0	98	700.0	700.0	100
United States	89,299.6	87,730.0	98	38,515.2	38,251.0	99

--continued

Cattle Inventory by Class – States and United States: January 1, 2013 and 2014 (continued)

State	Beef cows that have calved			Milk cows that have calved		
	2013	2014	Percent of previous year	2013	2014	Percent of previous year
	(1,000 head)	(1,000 head)	(percent)	(1,000 head)	(1,000 head)	(percent)
Alabama	651.0	671.0	103	9.0	9.0	100
Alaska	4.9	4.3	88	0.4	0.3	75
Arizona	175.0	178.0	102	190.0	192.0	101
Arkansas	851.0	882.0	104	9.0	8.0	89
California	610.0	600.0	98	1,780.0	1,780.0	100
Colorado	715.0	700.0	98	135.0	140.0	104
Connecticut	6.0	4.0	67	18.0	19.0	106
Delaware	4.0	2.8	70	4.5	4.7	104
Florida	908.0	877.0	97	122.0	123.0	101
Georgia	490.0	480.0	98	80.0	80.0	100
Hawaii	69.9	68.8	98	2.1	2.2	105
Idaho	510.0	445.0	87	580.0	565.0	97
Illinois	362.0	359.0	99	98.0	96.0	98
Indiana	191.0	192.0	101	174.0	178.0	102
Iowa	925.0	885.0	96	205.0	205.0	100
Kansas	1,328.0	1,414.0	106	132.0	136.0	103
Kentucky	1,028.0	1,012.0	98	72.0	68.0	94
Louisiana	454.0	450.0	99	16.0	15.0	94
Maine	11.0	11.0	100	32.0	30.0	94
Maryland	41.0	38.0	93	51.0	50.0	98
Massachusetts	6.5	6.0	92	12.5	12.0	96
Michigan	113.0	114.0	101	377.0	381.0	101
Minnesota	375.0	350.0	93	465.0	460.0	99
Mississippi	486.0	477.0	98	14.0	13.0	93
Missouri	1,757.0	1,820.0	104	93.0	90.0	97
Montana	1,506.0	1,476.0	98	14.0	14.0	100
Nebraska	1,805.0	1,797.0	100	55.0	53.0	96
Nevada	231.0	226.0	98	29.0	29.0	100
New Hampshire	3.5	3.0	86	13.5	13.5	100
New Jersey	9.0	8.0	89	7.0	7.0	100
New Mexico	390.0	387.0	99	320.0	323.0	101
New York	90.0	105.0	117	610.0	615.0	101
North Carolina	364.0	360.0	99	46.0	45.0	98
North Dakota	922.0	943.0	102	18.0	17.0	94
Ohio	290.0	293.0	101	270.0	267.0	99
Oklahoma	1,754.0	1,805.0	103	46.0	45.0	98
Oregon	527.0	516.0	98	123.0	124.0	101
Pennsylvania	155.0	170.0	110	535.0	530.0	99
Rhode Island	1.5	1.5	100	0.9	0.9	100
South Carolina	174.0	174.0	100	16.0	16.0	100
South Dakota	1,688.0	1,635.0	97	92.0	95.0	103
Tennessee	912.0	864.0	95	48.0	46.0	96
Texas	4,015.0	3,910.0	97	435.0	440.0	101
Utah	315.0	325.0	103	90.0	95.0	106
Vermont	12.0	12.0	100	134.0	132.0	99
Virginia	686.0	657.0	96	94.0	93.0	99
Washington	221.0	209.0	95	264.0	266.0	101
West Virginia	200.0	191.0	96	10.0	9.0	90
Wisconsin	260.0	240.0	92	1,270.0	1,270.0	100
Wyoming	694.0	694.0	100	6.0	6.0	100
United States	29,297.3	29,042.4	99	9,217.9	9,208.6	100

--continued

Cattle Inventory by Class – States and United States: January 1, 2013 and 2014 (continued)

State	Heifers 500 pounds and over					
	Beef cow replacement		Milk cow replacement		Other	
	2013	2014	2013	2014	2013	2014
	(1,000 head)	(1,000 head)	(1,000 head)	(1,000 head)	(1,000 head)	(1,000 head)
Alabama	105.0	105.0	4.0	4.0	31.0	31.0
Alaska	1.3	0.8	0.2	0.1	0.1	0.1
Arizona	22.0	28.0	73.0	77.0	25.0	20.0
Arkansas	129.0	137.0	7.0	5.0	54.0	78.0
California	110.0	110.0	780.0	750.0	220.0	230.0
Colorado	130.0	140.0	85.0	100.0	520.0	470.0
Connecticut	2.0	1.5	9.0	9.0	0.5	0.5
Delaware	0.7	0.5	3.0	2.6	0.6	0.6
Florida	115.0	110.0	35.0	35.0	25.0	25.0
Georgia	74.0	76.0	28.0	25.0	28.0	29.0
Hawaii	10.0	9.0	2.0	1.0	4.0	4.0
Idaho	120.0	110.0	310.0	260.0	210.0	190.0
Illinois	60.0	63.0	48.0	45.0	82.0	102.0
Indiana	41.0	39.0	56.0	70.0	48.0	56.0
Iowa	150.0	150.0	120.0	120.0	680.0	620.0
Kansas	230.0	240.0	100.0	100.0	1,370.0	1,400.0
Kentucky	150.0	145.0	50.0	45.0	160.0	115.0
Louisiana	77.0	84.0	5.0	5.0	21.0	22.0
Maine	2.5	3.0	15.5	17.0	2.0	2.0
Maryland	9.0	9.5	29.0	25.0	9.0	7.5
Massachusetts	2.0	2.0	6.0	7.5	1.0	0.5
Michigan	28.0	29.0	157.0	159.0	47.0	49.0
Minnesota	100.0	80.0	280.0	280.0	180.0	170.0
Mississippi	78.0	91.0	7.0	6.0	35.0	43.0
Missouri	290.0	305.0	40.0	50.0	200.0	215.0
Montana	435.0	430.0	8.0	9.0	187.0	211.0
Nebraska	350.0	387.0	20.0	23.0	1,380.0	1,260.0
Nevada	36.0	36.0	9.0	9.0	30.0	32.0
New Hampshire	1.2	1.0	6.5	7.0	0.8	0.5
New Jersey	2.0	1.5	4.0	3.5	1.0	1.0
New Mexico	75.0	70.0	125.0	120.0	100.0	70.0
New York	41.0	45.0	320.0	355.0	44.0	40.0
North Carolina	72.0	72.0	23.0	20.0	25.0	24.0
North Dakota	207.0	170.0	13.0	10.0	205.0	210.0
Ohio	55.0	55.0	125.0	130.0	65.0	60.0
Oklahoma	280.0	325.0	20.0	20.0	400.0	340.0
Oregon	122.0	105.0	68.0	60.0	85.0	120.0
Pennsylvania	55.0	50.0	310.0	315.0	65.0	70.0
Rhode Island	0.4	0.5	0.5	0.5	0.1	0.2
South Carolina	35.0	37.0	7.0	6.0	12.0	13.0
South Dakota	315.0	330.0	55.0	50.0	545.0	480.0
Tennessee	145.0	130.0	25.0	30.0	70.0	85.0
Texas	600.0	640.0	200.0	220.0	1,550.0	1,380.0
Utah	61.0	70.0	50.0	46.0	62.0	69.0
Vermont	4.5	4.5	59.0	56.0	6.5	5.5
Virginia	124.0	115.0	35.0	40.0	81.0	70.0
Washington	46.0	48.0	109.0	122.0	135.0	130.0
West Virginia	36.0	35.0	5.0	5.0	25.0	24.0
Wisconsin	75.0	70.0	700.0	680.0	55.0	60.0
Wyoming	171.0	175.0	4.0	4.0	120.0	106.0
United States	5,380.6	5,470.8	4,550.7	4,539.2	9,202.6	8,741.4

--continued

Cattle Inventory by Class – States and United States: January 1, 2013 and 2014 (continued)

State	Steers 500 pounds and over		Bulls 500 pounds and over		Calves under 500 pounds	
	2013	2014	2013	2014	2013	2014
	(1,000 head)	(1,000 head)	(1,000 head)	(1,000 head)	(1,000 head)	(1,000 head)
Alabama	50.0	55.0	50.0	50.0	320.0	315.0
Alaska	0.5	0.4	2.9	1.9	1.7	2.1
Arizona	290.0	305.0	20.0	20.0	105.0	100.0
Arkansas	125.0	135.0	55.0	55.0	370.0	360.0
California	620.0	640.0	70.0	70.0	1,110.0	1,070.0
Colorado	840.0	760.0	45.0	45.0	130.0	125.0
Connecticut	2.0	2.0	0.5	0.5	10.0	10.5
Delaware	1.9	2.0	0.3	0.3	3.0	2.5
Florida	20.0	25.0	55.0	60.0	380.0	365.0
Georgia	39.0	34.0	26.0	26.0	255.0	250.0
Hawaii	7.0	7.0	4.0	4.0	33.0	34.0
Idaho	275.0	250.0	40.0	40.0	325.0	330.0
Illinois	240.0	245.0	25.0	25.0	205.0	195.0
Indiana	91.0	108.0	19.0	17.0	190.0	210.0
Iowa	1,250.0	1,240.0	60.0	60.0	460.0	420.0
Kansas	1,970.0	1,770.0	85.0	90.0	635.0	650.0
Kentucky	225.0	185.0	75.0	70.0	480.0	450.0
Louisiana	18.0	23.0	30.0	30.0	159.0	161.0
Maine	5.0	5.0	1.5	1.5	15.5	15.5
Maryland	15.0	15.0	4.0	4.0	34.0	33.0
Massachusetts	2.0	2.0	1.0	1.0	8.0	8.0
Michigan	174.0	172.0	14.0	13.0	210.0	203.0
Minnesota	470.0	460.0	35.0	35.0	485.0	445.0
Mississippi	41.0	62.0	39.0	38.0	210.0	200.0
Missouri	350.0	350.0	100.0	100.0	820.0	870.0
Montana	230.0	220.0	100.0	100.0	120.0	90.0
Nebraska	2,250.0	2,270.0	100.0	95.0	340.0	265.0
Nevada	46.0	43.0	13.0	13.0	66.0	67.0
New Hampshire	1.0	1.0	0.5	0.5	6.0	5.5
New Jersey	2.0	2.0	1.0	1.0	5.0	5.0
New Mexico	80.0	90.0	35.0	35.0	215.0	195.0
New York	36.0	32.0	19.0	18.0	240.0	240.0
North Carolina	32.0	39.0	33.0	30.0	225.0	220.0
North Dakota	255.0	270.0	60.0	55.0	110.0	95.0
Ohio	185.0	195.0	20.0	25.0	220.0	225.0
Oklahoma	870.0	900.0	120.0	125.0	710.0	740.0
Oregon	157.0	160.0	36.0	36.0	162.0	159.0
Pennsylvania	170.0	185.0	25.0	25.0	295.0	275.0
Rhode Island	0.3	0.5	0.1	0.1	0.8	0.8
South Carolina	10.0	11.0	15.0	15.0	86.0	88.0
South Dakota	720.0	670.0	90.0	95.0	345.0	295.0
Tennessee	125.0	135.0	65.0	60.0	440.0	410.0
Texas	2,500.0	2,370.0	300.0	280.0	1,700.0	1,660.0
Utah	75.0	85.0	22.0	23.0	95.0	87.0
Vermont	4.0	4.0	3.0	3.0	47.0	43.0
Virginia	195.0	170.0	40.0	40.0	355.0	345.0
Washington	190.0	160.0	17.0	19.0	168.0	146.0
West Virginia	48.0	40.0	14.0	14.0	72.0	62.0
Wisconsin	350.0	360.0	30.0	30.0	710.0	640.0
Wyoming	160.0	150.0	40.0	40.0	95.0	95.0
United States	15,812.7	15,414.9	2,055.8	2,034.8	13,782.0	13,277.9

Calf Crop – States and United States: 2012 and 2013

State	2012	2013	Percent of previous year
	(1,000 head)	(1,000 head)	(percent)
Alabama	610.0	600.0	98
Alaska	3.8	3.3	87
Arizona	260.0	280.0	108
Arkansas	760.0	760.0	100
California	2,100.0	2,010.0	96
Colorado	760.0	740.0	97
Connecticut	18.0	18.5	103
Delaware	6.0	5.0	83
Florida	860.0	830.0	97
Georgia	480.0	480.0	100
Hawaii	61.0	60.0	98
Idaho	960.0	940.0	98
Illinois	390.0	385.0	99
Indiana	330.0	330.0	100
Iowa	1,050.0	1,020.0	97
Kansas	1,250.0	1,280.0	102
Kentucky	980.0	970.0	99
Louisiana	370.0	370.0	100
Maine	32.0	32.0	100
Maryland	76.0	67.0	88
Massachusetts	18.0	18.0	100
Michigan	385.0	395.0	103
Minnesota	790.0	780.0	99
Mississippi	400.0	400.0	100
Missouri	1,740.0	1,730.0	99
Montana	1,500.0	1,470.0	98
Nebraska	1,720.0	1,680.0	98
Nevada	205.0	210.0	102
New Hampshire	15.0	13.5	90
New Jersey	10.0	9.5	95
New Mexico	580.0	560.0	97
New York	530.0	550.0	104
North Carolina	370.0	360.0	97
North Dakota	870.0	920.0	106
Ohio	480.0	490.0	102
Oklahoma	1,670.0	1,670.0	100
Oregon	610.0	630.0	103
Pennsylvania	590.0	580.0	98
Rhode Island	2.2	2.2	100
South Carolina	150.0	160.0	107
South Dakota	1,710.0	1,690.0	99
Tennessee	880.0	830.0	94
Texas	3,900.0	3,850.0	99
Utah	365.0	380.0	104
Vermont	117.0	116.0	99
Virginia	670.0	640.0	96
Washington	420.0	430.0	102
West Virginia	195.0	185.0	95
Wisconsin	1,370.0	1,360.0	99
Wyoming	660.0	640.0	97
United States	34,279.0	33,930.0	99

Total Number of Cattle on Feed – States and United States: January 1, 2013 and 2014

[Cattle and calves on feed are animals for slaughter market being fed a ration of grain or other concentrates and are expected to produce a carcass that will grade select or better. Cattle and calves on feed are included in the cattle inventory estimates by classes]

State	2013 (1,000 head)	2014 (1,000 head)	Percent of previous year (percent)
Arizona	272.0	274.0	101
California	475.0	510.0	107
Colorado	1,030.0	990.0	96
Idaho	235.0	225.0	96
Illinois	160.0	165.0	103
Indiana	100.0	110.0	110
Iowa	1,270.0	1,230.0	97
Kansas	2,240.0	2,130.0	95
Kentucky	15.0	15.0	100
Maryland	10.0	10.0	100
Michigan	155.0	150.0	97
Minnesota	310.0	300.0	97
Missouri	50.0	55.0	110
Montana	38.0	45.0	118
Nebraska	2,550.0	2,450.0	96
Nevada	9.0	8.0	89
New York	25.0	23.0	92
North Dakota	45.0	35.0	78
Ohio	160.0	160.0	100
Oklahoma	345.0	265.0	77
Oregon	65.0	75.0	115
Pennsylvania	75.0	75.0	100
South Dakota	320.0	310.0	97
Tennessee	3.0	3.0	100
Texas	2,730.0	2,450.0	90
Utah	28.0	27.0	96
Virginia	23.0	20.0	87
Washington	247.0	201.0	81
West Virginia	4.0	5.0	125
Wisconsin	240.0	240.0	100
Wyoming	70.0	75.0	107
Other States ¹	64.7	64.3	99
United States	13,363.7	12,695.3	95

¹ Individual state estimates not available for states not shown, but are included in Other States.

Number of Cattle Grazing on Small Grain Pasture – 3-State Total: January 1, 2013 and 2014

States	2013	2014	Percent of previous year
	(million head)	(million head)	(percent)
Kansas, Oklahoma, and Texas	1.34	1.61	120

Calf Crop and Percent of Total by Six Month Period – United States: 2012 and 2013

Period	2012		2013	
	Number	Percent of total	Number	Percent of total
	(1,000 head)	(percent)	(1,000 head)	(percent)
January 1 - June 30	25,000.0	72.9	24,700.0	72.8
July 1 - December 31	9,279.0	27.1	9,230.0	27.2
Total	34,279.0	100.0	33,930.0	100.0

Statistical Methodology

Survey Procedures: A random sample of United States producers was surveyed to provide data for these estimates. Survey procedures ensured that all cattle producers, regardless of size, had a chance to be included in the survey. Large producers were sampled more heavily than small operations. Data were collected from about 40,200 operators during the first half of January by mail, telephone, and face-to-face personal interviews and 74 percent of the reports were usable. Regardless of when operators responded, they were asked to report inventories as of January 1.

Estimating Procedures: These cattle estimates were prepared by the Agricultural Statistics Board after reviewing recommendations and analysis submitted by each State office. National and State survey data were reviewed for reasonableness with each other and with estimates from the previous year using a balance sheet. The balance sheet begins with the previous inventory estimate, adds to it estimates of births and imports, and subtracts estimates of slaughter, exports, and deaths. This indicated ending inventory level is compared to the Agricultural Statistics Board estimate for reasonableness.

Revision Policy: Revisions to previous estimates are made to improve year to year and item to item relationships. Estimates for the previous year are subject to revision when current estimates are made. The reviews are primarily based on livestock slaughter and additional foreign trade and survey data. Estimates will also be reviewed after data from the five-year Census of Agriculture are available. No revisions will be made after that date.

Reliability: Since all cattle operators are not included in the sample, survey estimates are subject to sampling variability. Survey results are also subject to non-sampling errors such as omissions, duplications, and mistakes in reporting, recording, and processing the data. The effects of these errors cannot be measured directly. They are minimized through rigid quality controls in the data collection process and through a careful review of all reported data for consistency and reasonableness.

To assist users in evaluating the reliability of estimates in this report, the "**Root Mean Square Error**" is shown for selected items in the table on the following page. The "Root Mean Square Error" is a statistical measure based on past performance and is computed using the differences between first and latest estimates. The "Root Mean Square Error" for cattle inventory estimates over the past 10 years is 0.5 percent. This means that chances are 2 out of 3 that the final estimate will not be above or below the current estimate of 87.7 million head by more than 0.5 percent. Chances are 9 out of 10 that the difference will not exceed 0.9 percent.

The table on the following page shows a 10 year record of the range of differences between first and latest estimates for selected items. Using estimates of all cattle and calves as an example, changes between the first inventory estimate and the latest estimate during the past 10 years have averaged 344,000 head, ranging from 0 to 830,000 head. During this period the initial inventory estimate has been above the latest estimate 5 times and below the latest estimate 3 times. This does not imply that the January 1 estimate is likely to understate or overstate final inventory.

Reliability of January 1 Cattle Estimates

[Based on data for the past ten years]

Item	Root mean square error	90 percent confidence level	Difference between first and latest estimate				
			Average	Smallest	Largest	Years	
						Above latest	Below latest
	(percent)	(percent)	(1,000 head)	(1,000 head)	(1,000 head)	(number)	(number)
All cattle & calves	0.5	0.9	344	0	830	5	3
All cows	0.6	1.1	187	0	505	6	2
Calf crop	1.0	1.8	267	0	674	5	3

Information Contacts

Listed below are the commodity specialists in the Livestock Branch of the National Agricultural Statistics Service to contact for additional information. E-mail inquiries may be sent to nass@nass.usda.gov

Dan Kerestes, Chief, Livestock Branch	(202) 720-3570
Scott Hollis, Head, Livestock Section	(202) 690-2424
Travis Averill – Cattle, Cattle on Feed	(202) 720-3040
Doug Bounds – Hogs and Pigs	(202) 720-3106
Alissa Cowell-Mytar – Sheep and Goats, Honey	(202) 720-4751
Donnie Fike – Dairy Products	(202) 690-3236
Tiffany Hora – Livestock Slaughter	(515) 284-4340
Mike Miller – Milk Production and Milk Cows	(202) 720-3278

Access to NASS Reports

For your convenience, you may access NASS reports and products the following ways:

- All reports are available electronically, at no cost, on the NASS web site: <http://www.nass.usda.gov>
- Both national and state specific reports are available via a free e-mail subscription. To set-up this free subscription, visit <http://www.nass.usda.gov> and in the “Follow NASS” box under “Receive reports by Email,” click on “National” or “State” to select the reports you would like to receive.

For more information on NASS surveys and reports, call the NASS Agricultural Statistics Hotline at (800) 727-9540, 7:30 a.m. to 4:00 p.m. ET, or e-mail: nass@nass.usda.gov.

The U.S. Department of Agriculture (USDA) prohibits discrimination against its customers, employees, and applicants for employment on the bases of race, color, national origin, age, disability, sex, gender identity, religion, reprisal, and where applicable, political beliefs, marital status, familial or parental status, sexual orientation, or all or part of an individual's income is derived from any public assistance program, or protected genetic information in employment or in any program or activity conducted or funded by the Department. (Not all prohibited bases will apply to all programs and/or employment activities.)

If you wish to file a Civil Rights program complaint of discrimination, complete the [USDA Program Discrimination Complaint Form](#) (PDF), found online at http://www.ascr.usda.gov/complaint_filing_cust.html, or at any USDA office, or call (866) 632-9992 to request the form. You may also write a letter containing all of the information requested in the form. Send your completed complaint form or letter to us by mail at U.S. Department of Agriculture, Director, Office of Adjudication, 1400 Independence Avenue, S.W., Washington, D.C. 20250-9410, by fax (202) 690-7442 or email at program.intake@usda.gov.



United States
Department of Agriculture

Agricultural Outlook Forum

February 20-21, 2014
Crystal Gateway Marriott Hotel
Arlington, Virginia

The Changing Face of Agriculture

USDA's annual event brings together leadership
from throughout the agricultural community to discuss the

Changing Face of Agriculture.

Session topics include:

New Agricultural Census
Agriculture Supporting Our Veterans
Women in Agriculture
Agriculture & Social Media
Food Price and Farm Income Outlooks
Commodity and Weather Outlooks
U.S. Farm Land
International Trade
Conservation
Nutrition & Food Safety
Nanotechnology
Invasive Pests
Know Your Farmer, Know Your Food
Agroforestry
Climate Variability
Rural Economies
Disease Challenges & the Citrus Industry
Extension's 100-Year Anniversary

www.usda.gov/oce/forum

