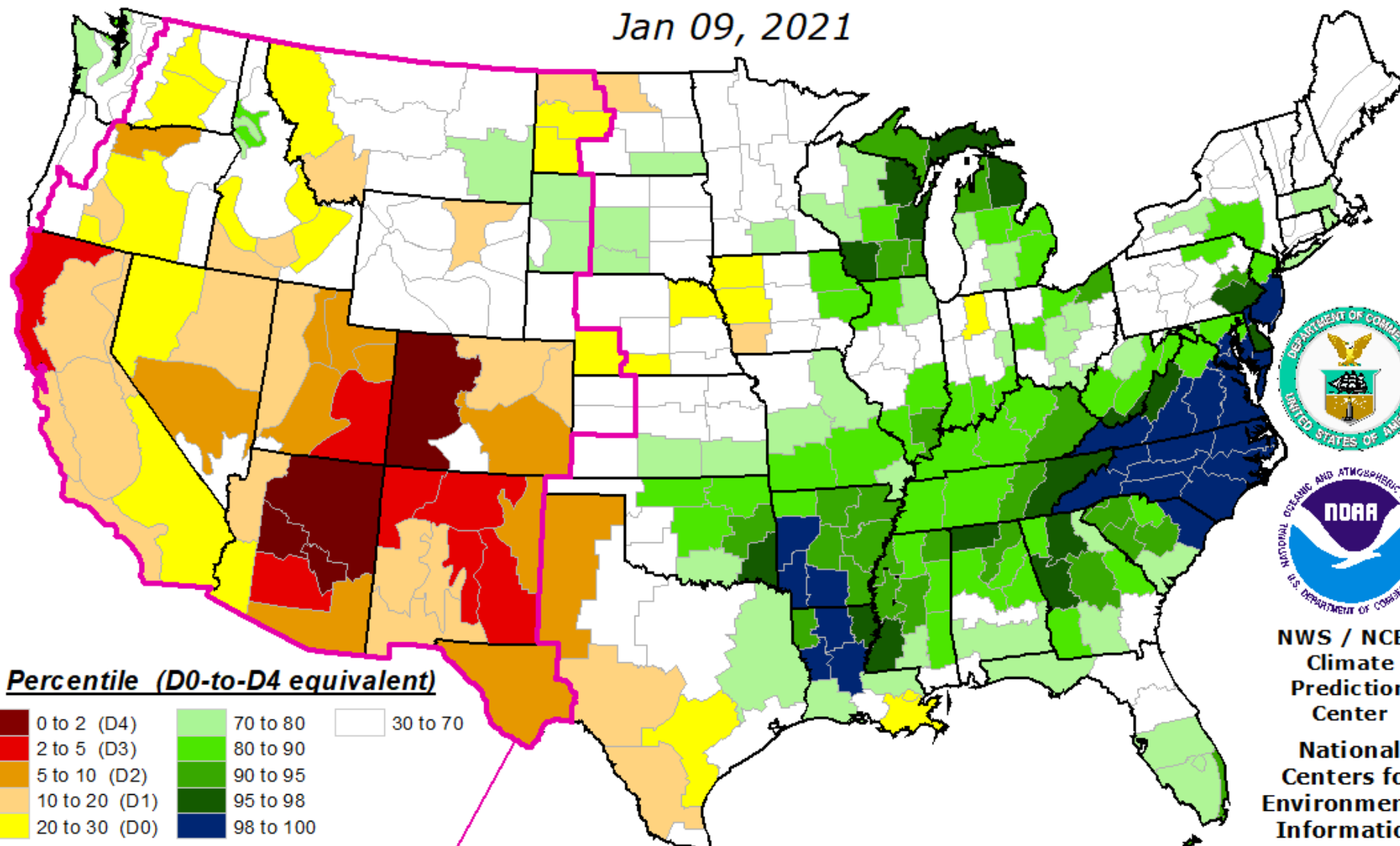


Objective Long-Term Drought Indicator Blend Percentiles

Jan 09, 2021



NWS / NCEP
Climate
Prediction
Center
National
Centers for
Environmental
Information

Inputs (as percentiles):

25% Palmer Hydrologic Index
20% 24-Month Precipitation
20% 12-Month Precipitation
15% 6-Month Precipitation
10% 60-Month Precipitation
10% CPC Soil Moisture Model

Western Formulation Inputs (as percentiles):

30% Palmer Hydrologic Index
30% 60-Month Average Z-Index
10% 60-Month Precipitation
10% 24-Month Precipitation
10% 12-Month Precipitation
10% CPC Soil Moisture Model

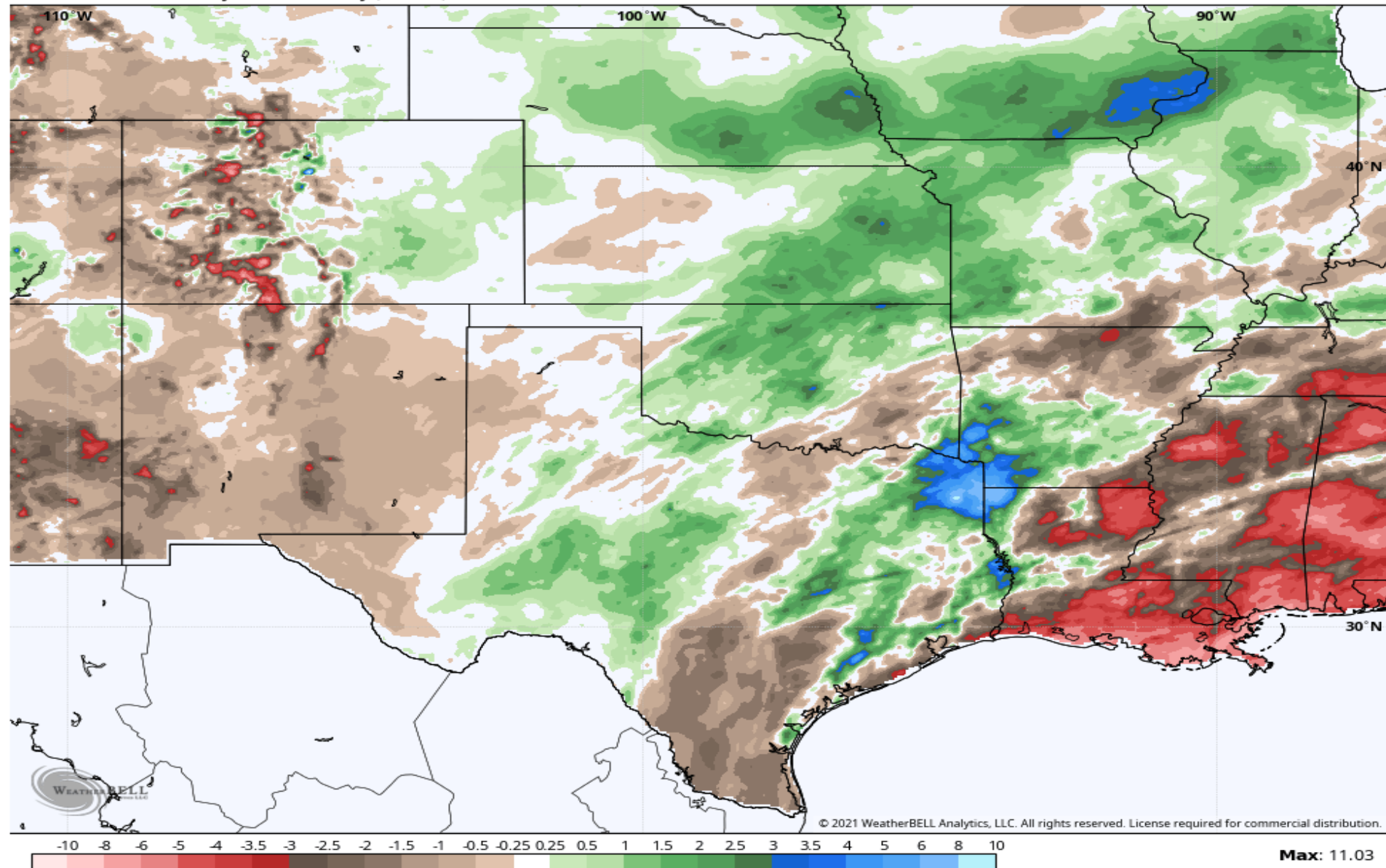
This map approximates impacts responding to precipitation over the course of several months to a few years, such as reservoir content, groundwater, and lake levels. **HOWEVER, THE RELATIONSHIP BETWEEN INDICATORS AND WATER SUPPLIES CAN VARY MARKEDLY WITH LOCATION, SEASON, SOURCE, AND MANAGEMENT PRACTICE. Do not interpret this map too literally.**

This map is based on preliminary climate division data. Local conditions and/or final data may differ. See the detailed product suite description for more details.

Precipitation % of "Normal" Past 60 Days

HRAP 4 km • 60-Day Total Anomaly (Inches)

Valid: 12z Sun 7 Feb 2021

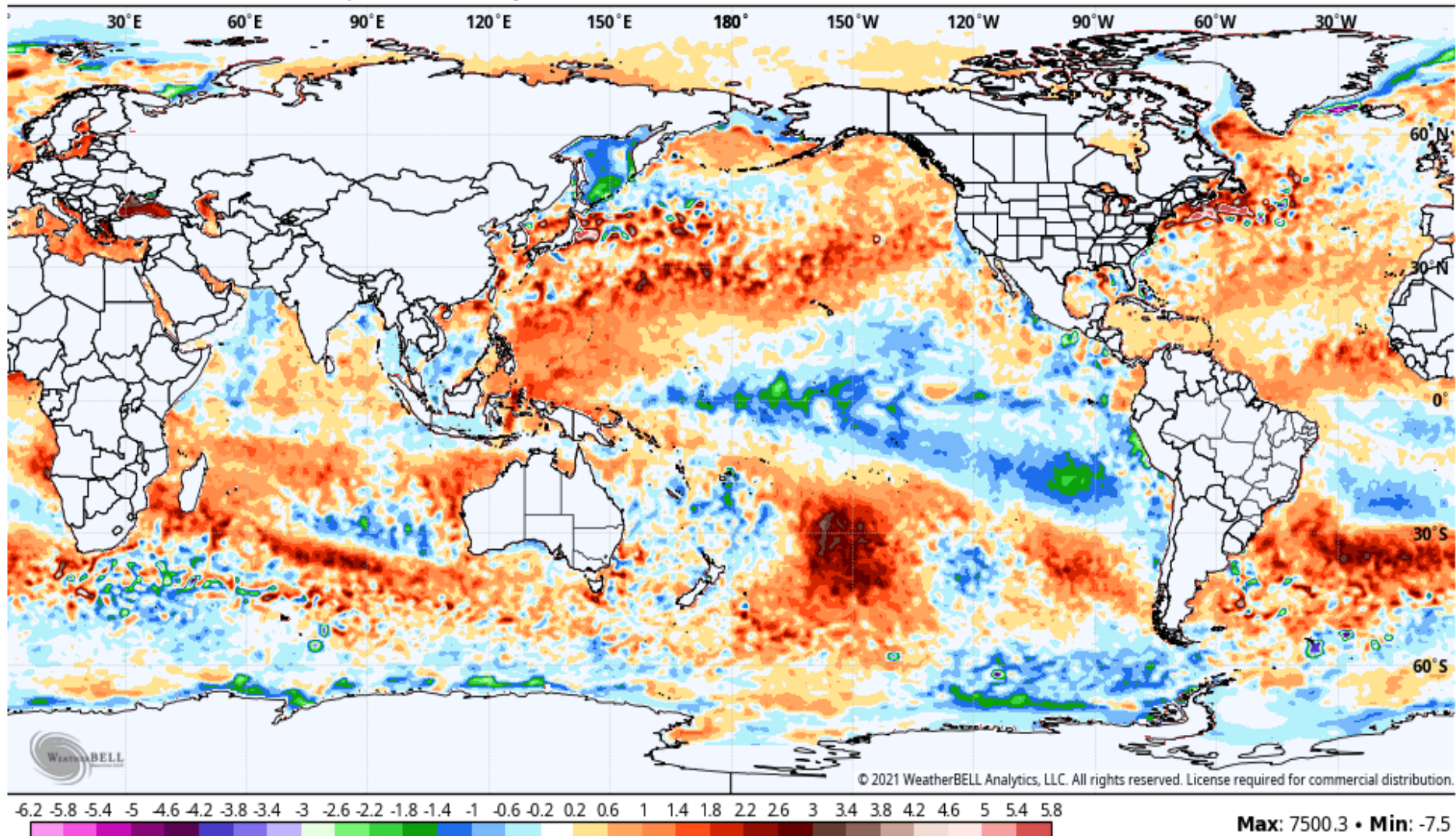


ENSO Update

Sea Surface Temperature Anomalies 2/5/21

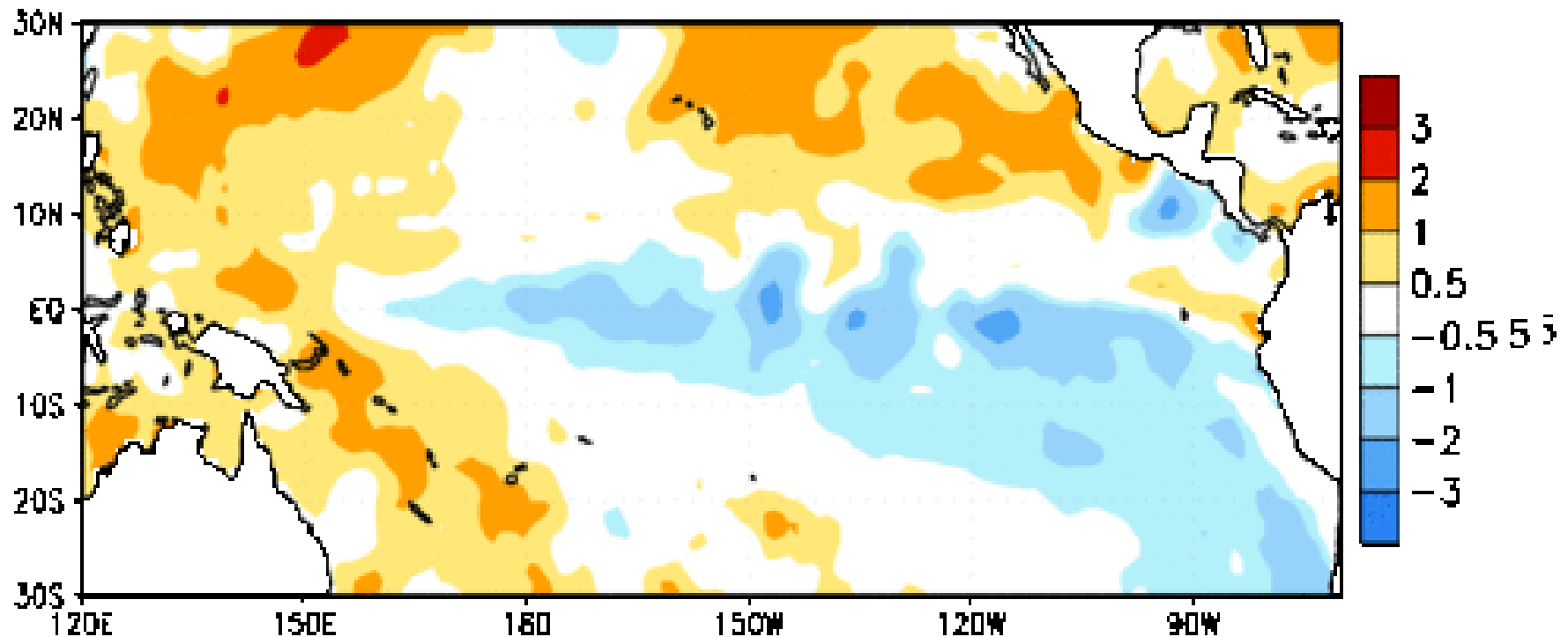
OISST 0.25° • Sea Surface Temperature Anomaly (°C)

Valid: 00z Fri 5 Feb 2021



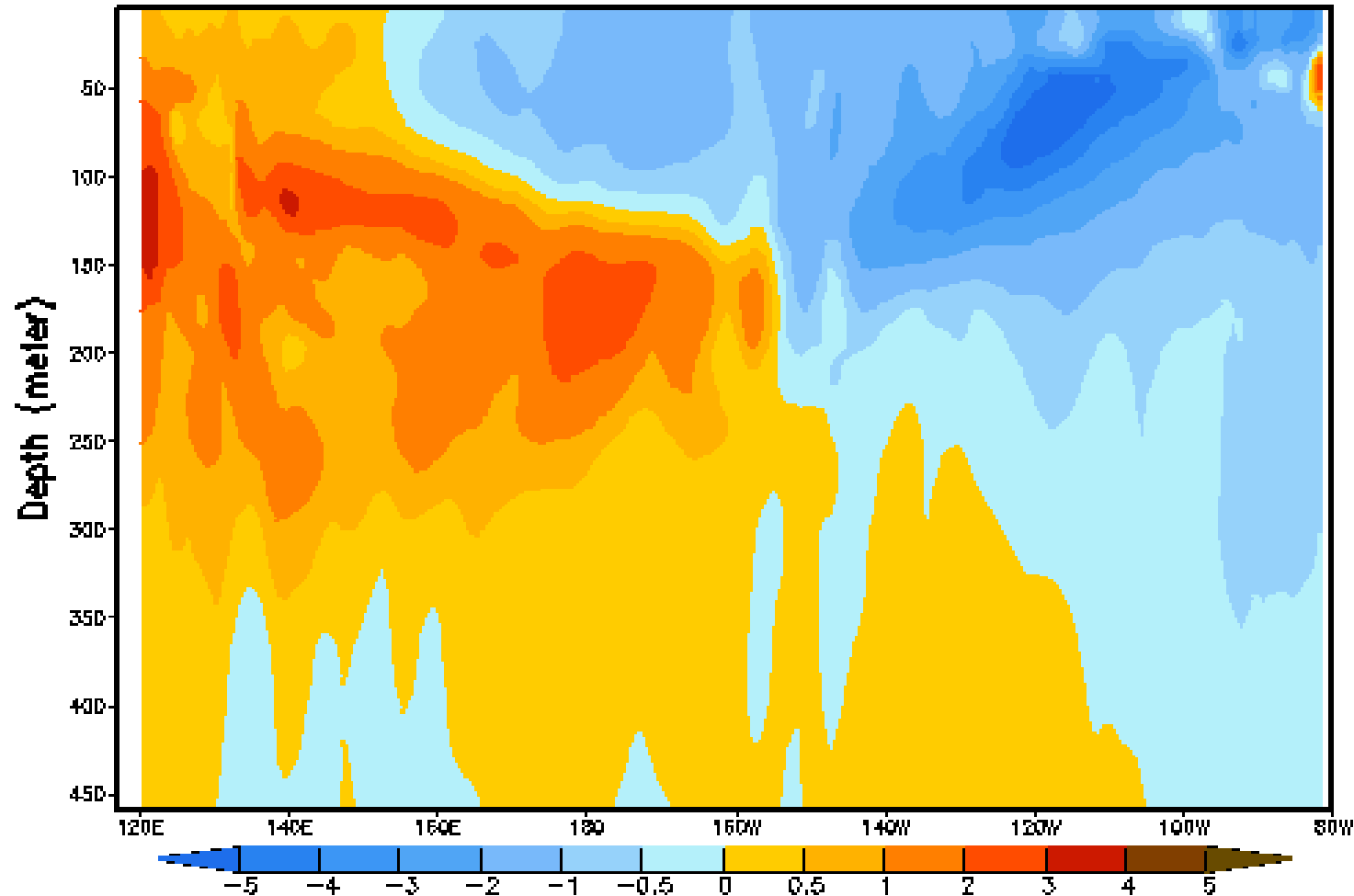
Moderate La Niña...

Week centered on 11 NOV 2020
SST Anomalies (°C)

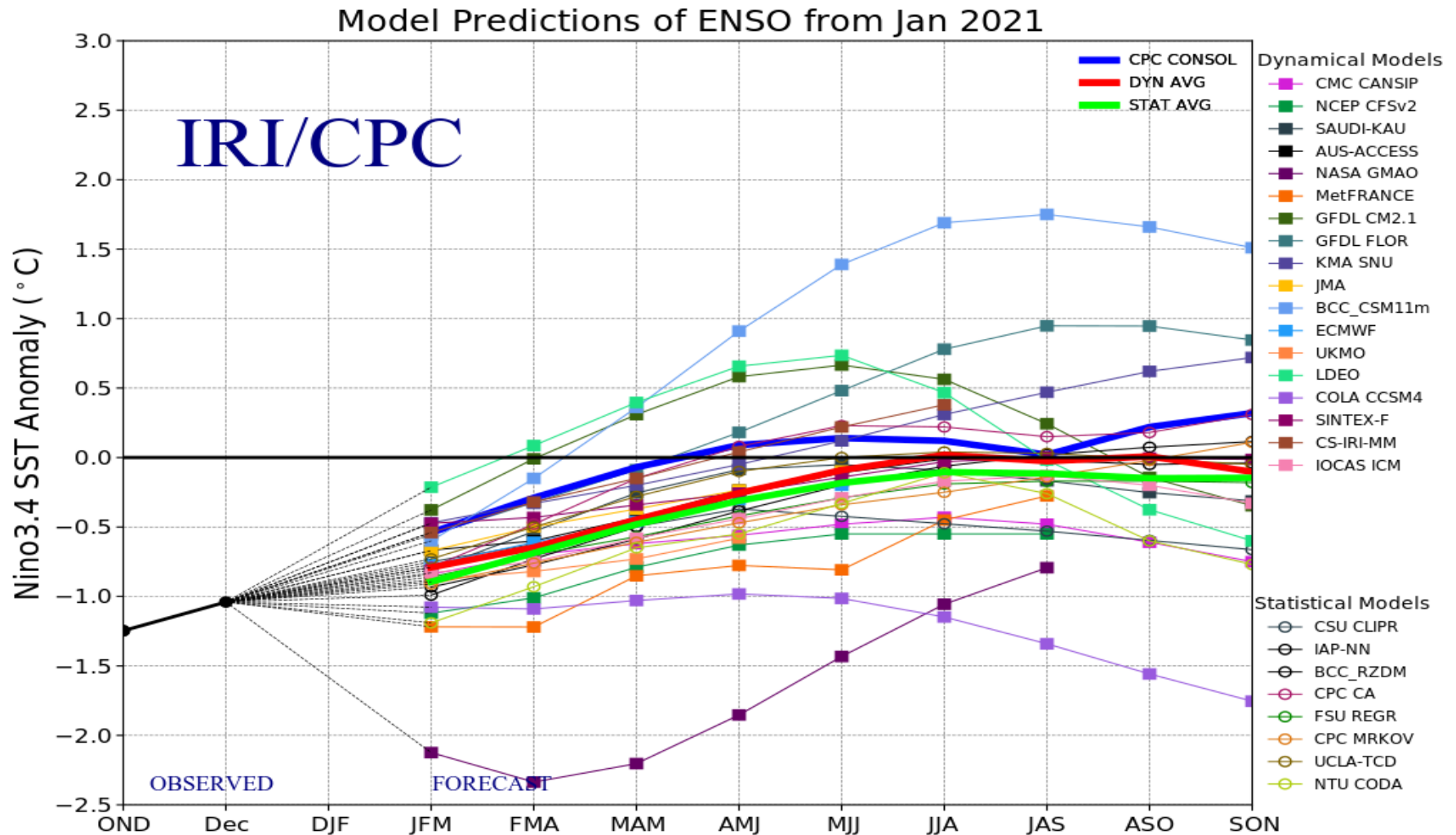


Colder than average water locked in at the surface and beneath the surface...

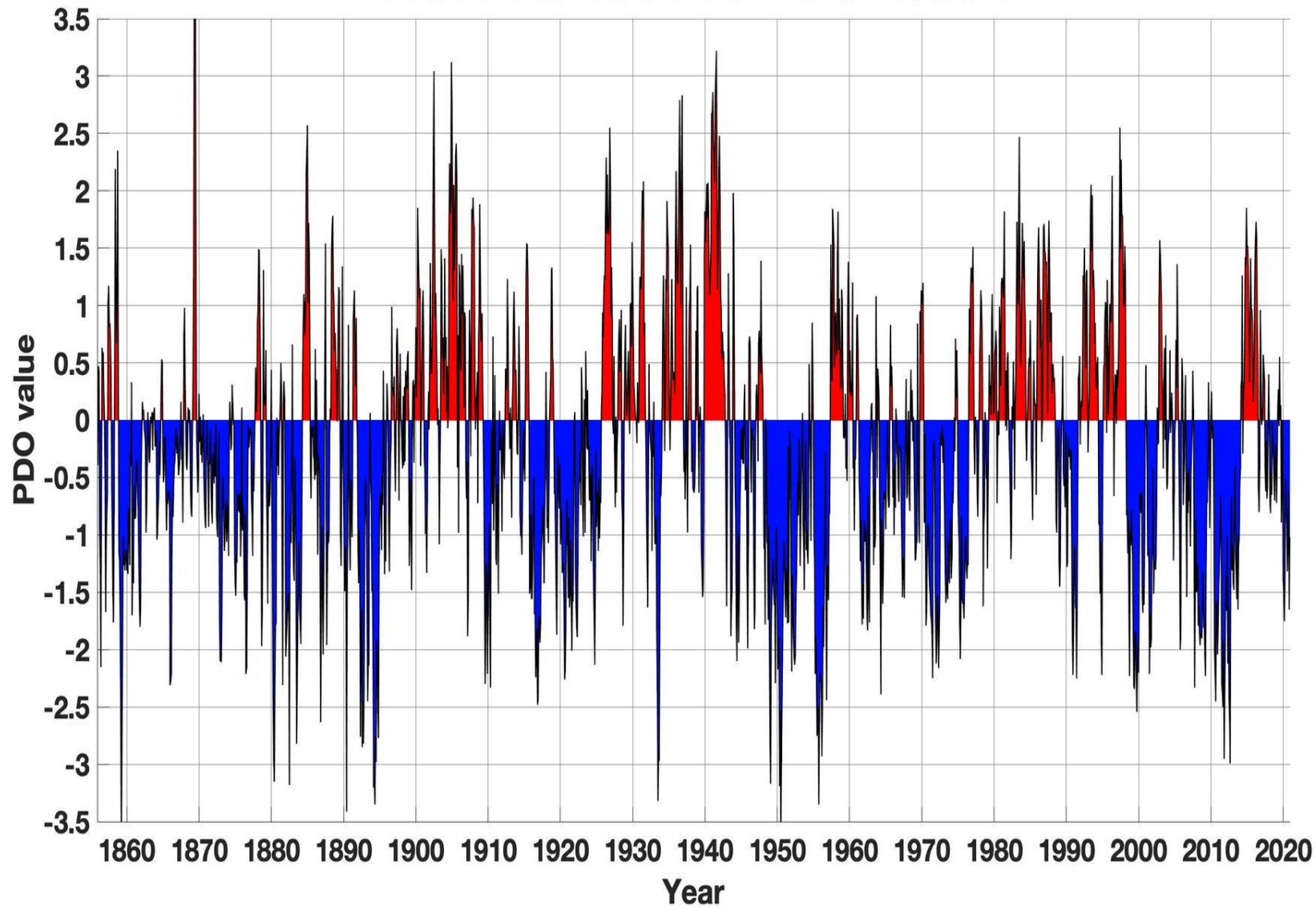
Equatorial Temperature Anomaly (°C)
Pentad centered on 19 NOV 2020



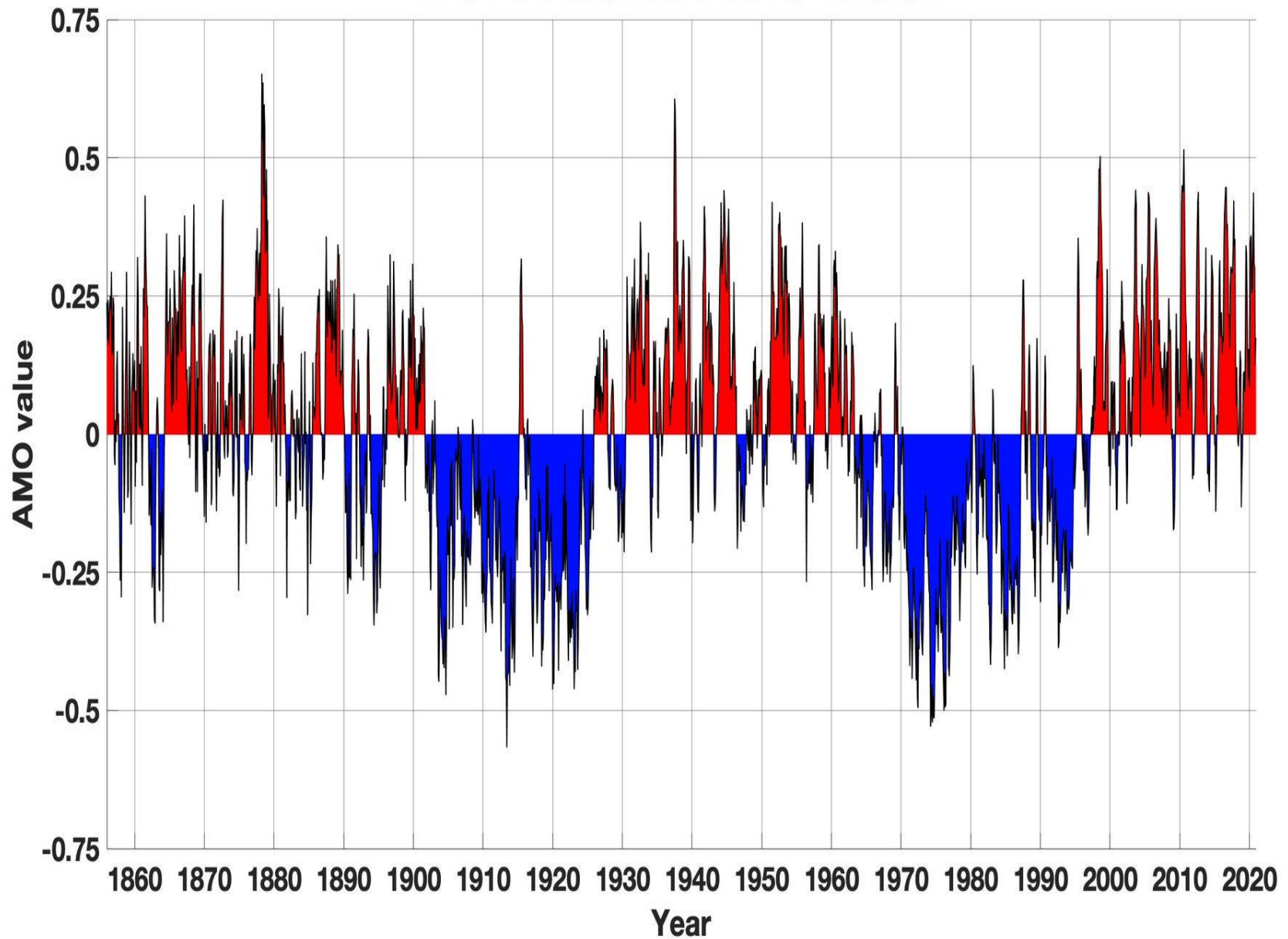
La Niña likely persists through spring?



NOAA ERSSTv5 PDO Index



NOAA ESRL AMO Index



+PDO -AMO



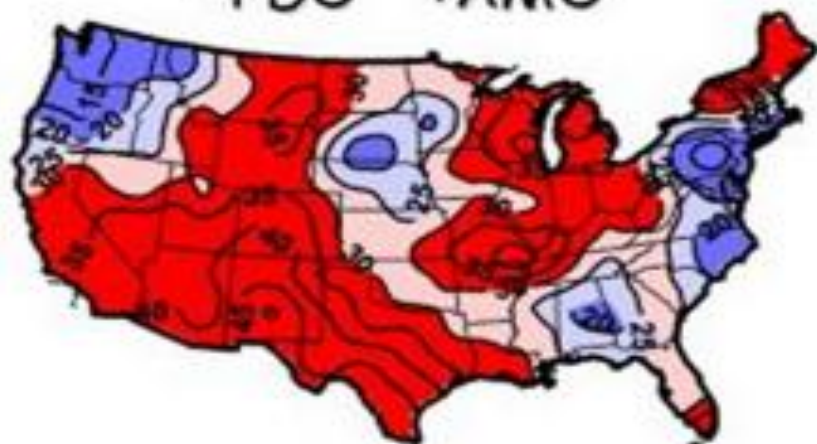
+PDO +AMO



-PDO -AMO



-PDO +AMO

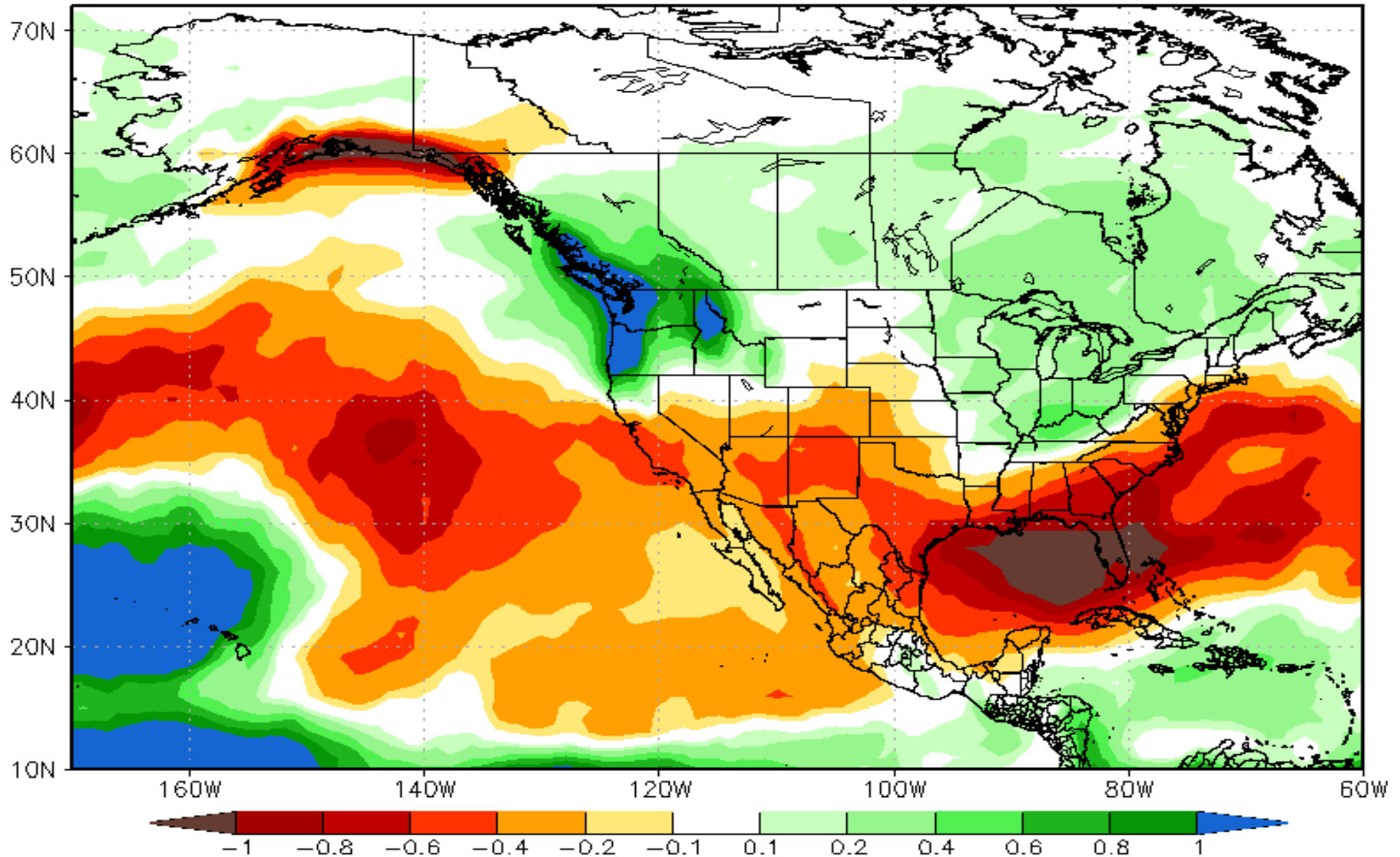


25% = normal drought frequency

NMME Model Precipitation Forecast

Green = Wetter Brown = Drier White = "Average"

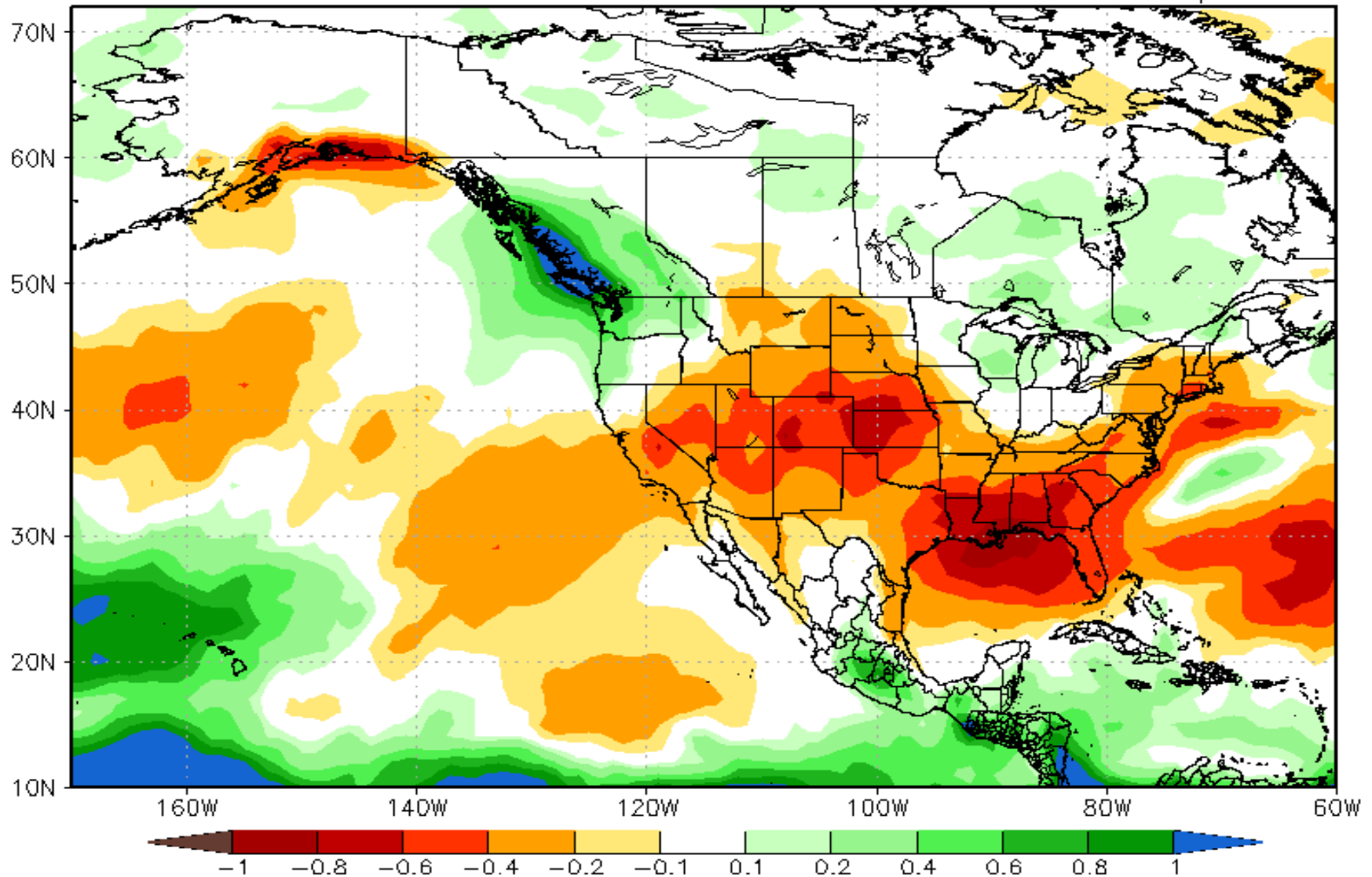
NMME Forecast of Prec. rate Anom IC=202102 for Lead 1 2021Mar



NMME Model Precipitation Forecast

Green = Wetter Brown = Drier White = "Average"

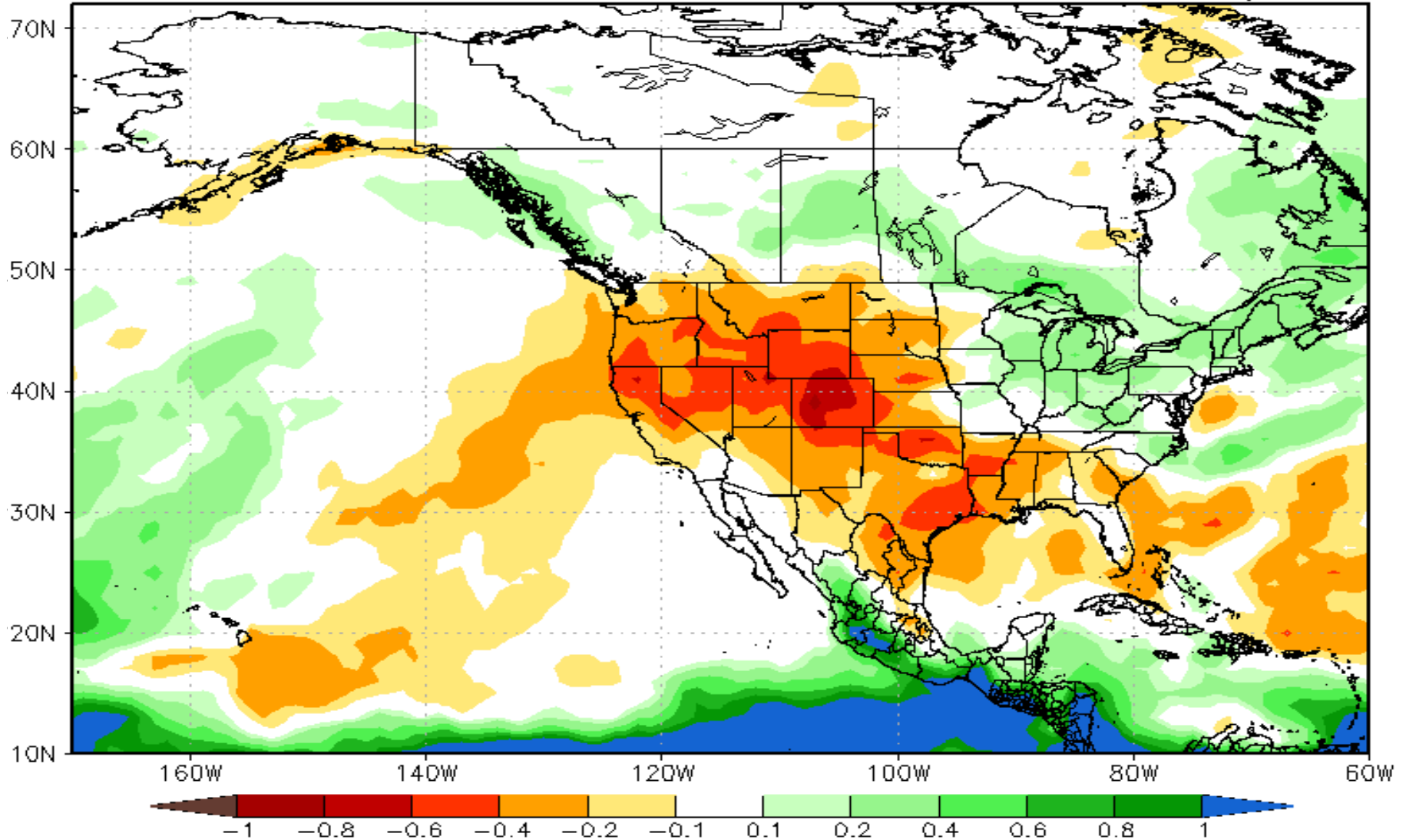
NMME Forecast of Prec. rate Anom IC=202102 for Lead 2 2021Apr



NMME Model Precipitation Forecast

Green = Wetter Brown = Drier White = "Average"

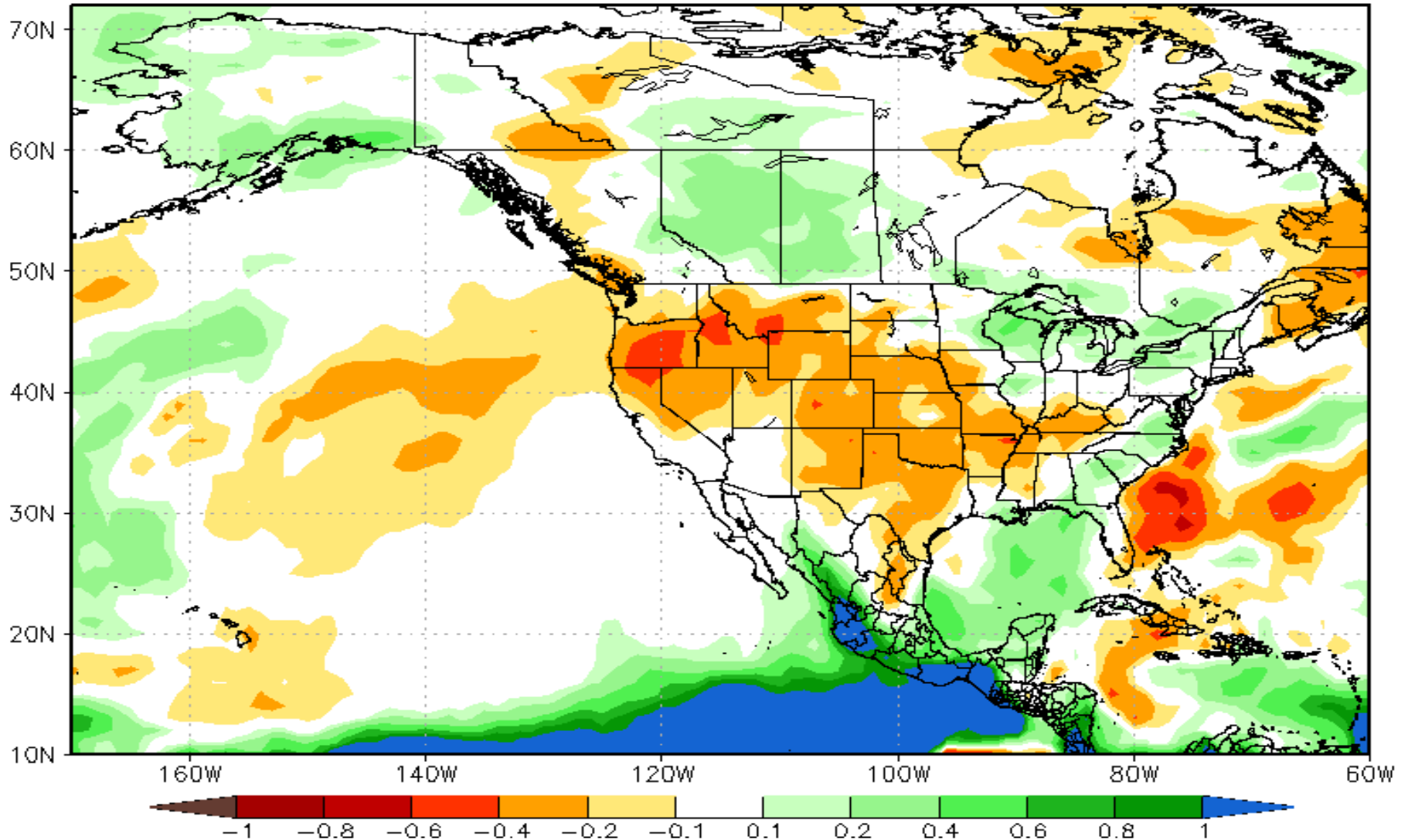
NMME Forecast of Prec. rate Anom IC=202102 for Lead 3 2021May



NMME Model Precipitation Forecast

Green = Wetter Brown = Drier White = “Average”

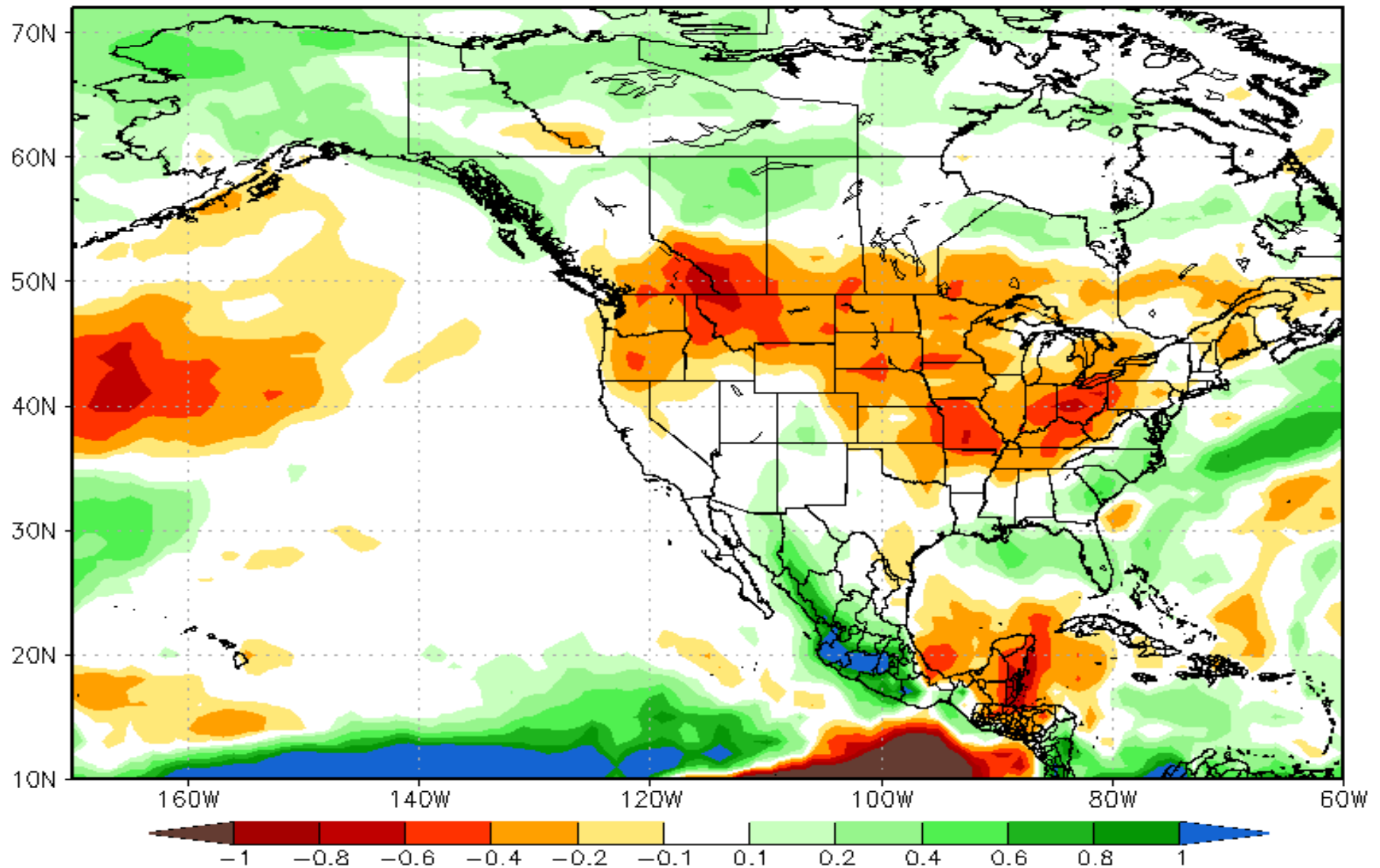
NMME Forecast of Prec. rate Anom IC=202102 for Lead 4 2021Jun



NMME Model Precipitation Forecast

Green = Wetter Brown = Drier White = "Average"

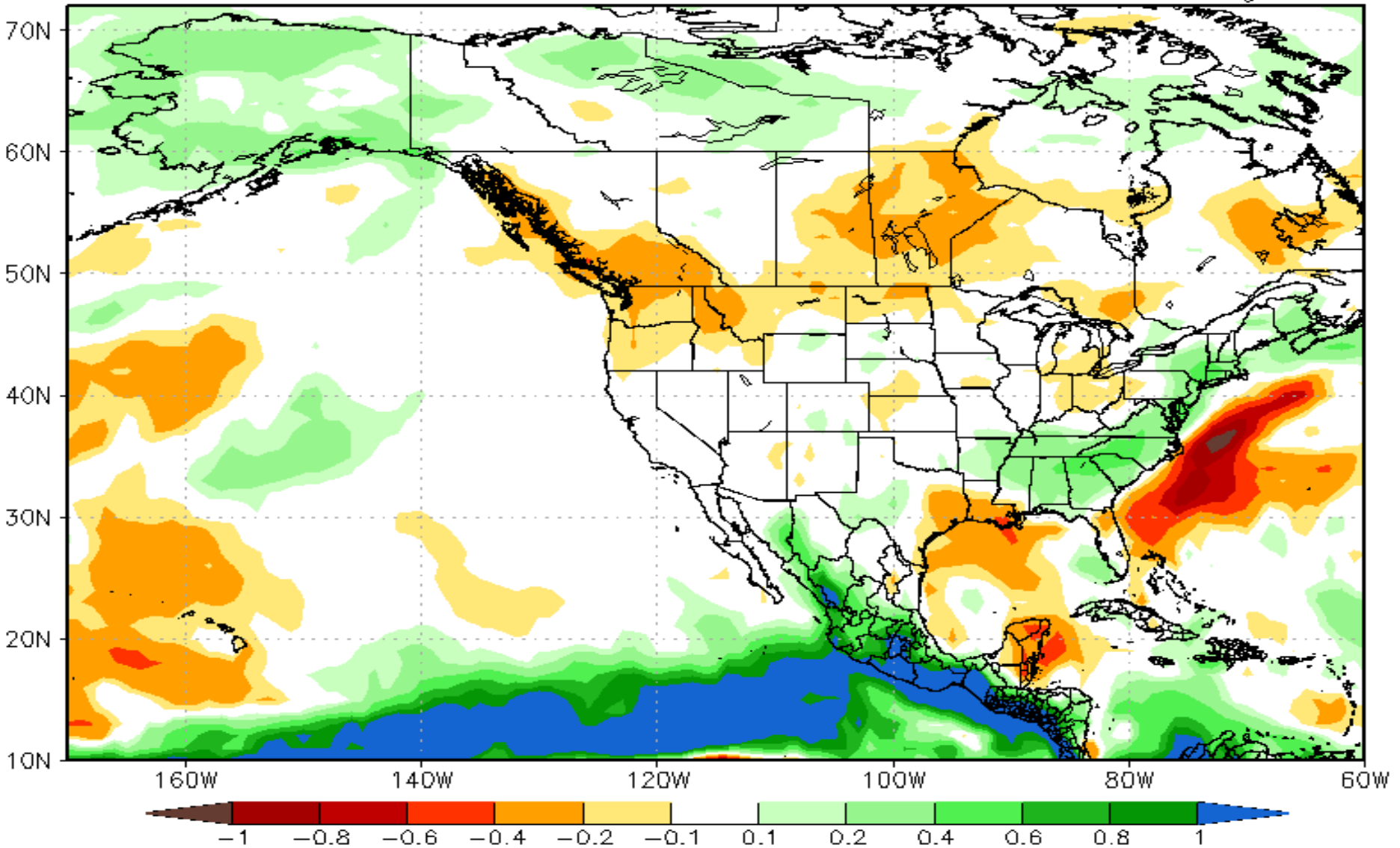
NMME Forecast of Prec. rate Anom IC=202102 for Lead 5 2021Jul



NMME Model Precipitation Forecast

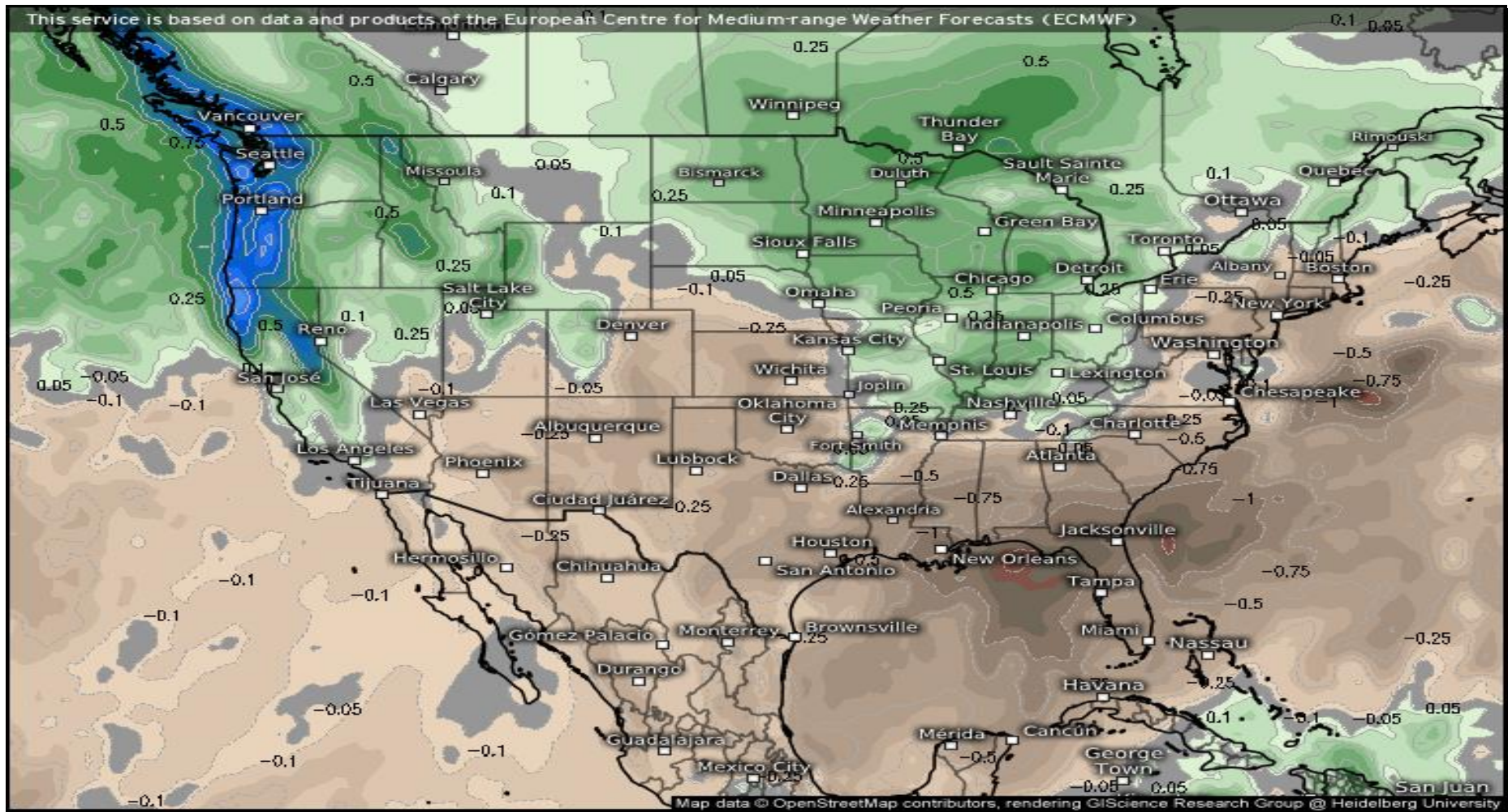
Green = Wetter Brown = Drier White = “Average”

NMME Forecast of Prec. rate Anom IC=202102 for Lead 6 2021Aug



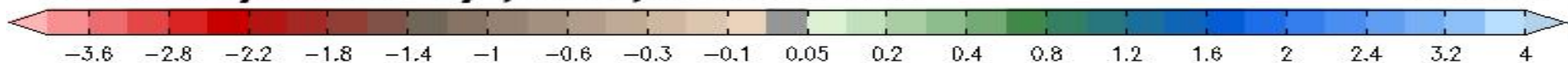
EURO Seasonal Model Precipitation Forecast

Green/Blue = Wetter Yellow/Brown = Drier White = "Average"



Anomaly monthly precipitation (in)

Valid for
March 2021



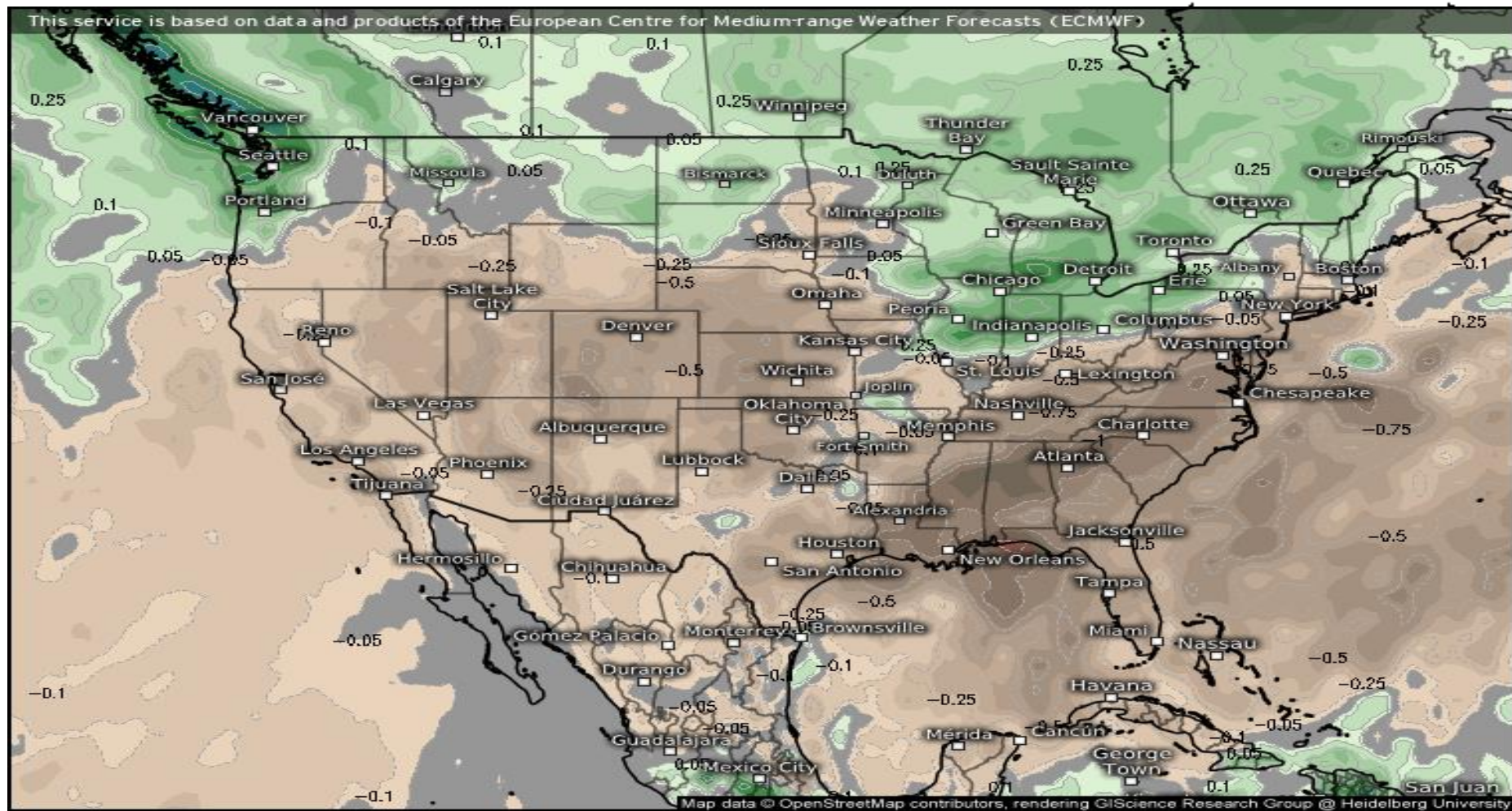
USA

ECMWF SEAS5 (monthly) from 02/01/2021/00z

Model:

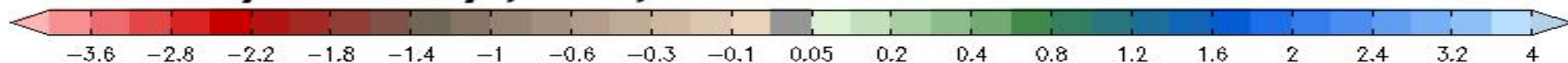
EURO Seasonal Model Precipitation Forecast

Green/Blue = Wetter Yellow/Brown = Drier White = "Average"



Anomaly monthly precipitation (in)

Valid for
April 2021

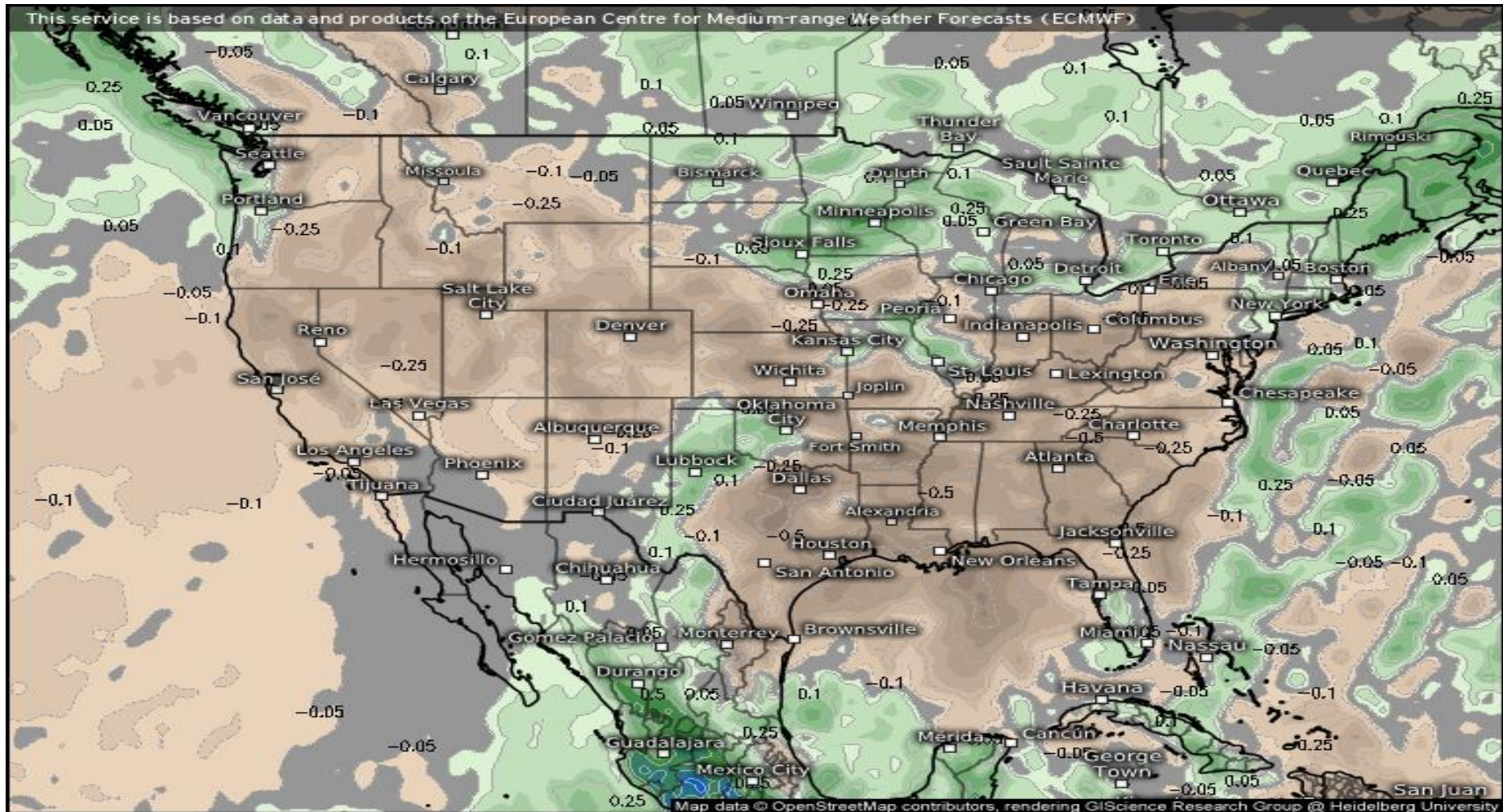


USA
ECMWF SEAS5 (monthly) from 02/01/2021/00z

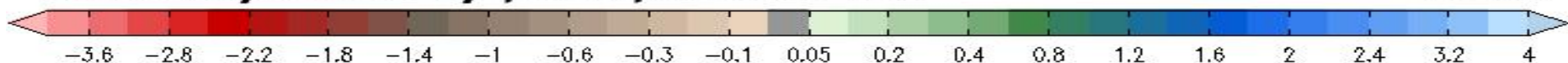
Model:

EURO Seasonal Model Precipitation Forecast

Green/Blue = Wetter Yellow/Brown = Drier White = "Average"



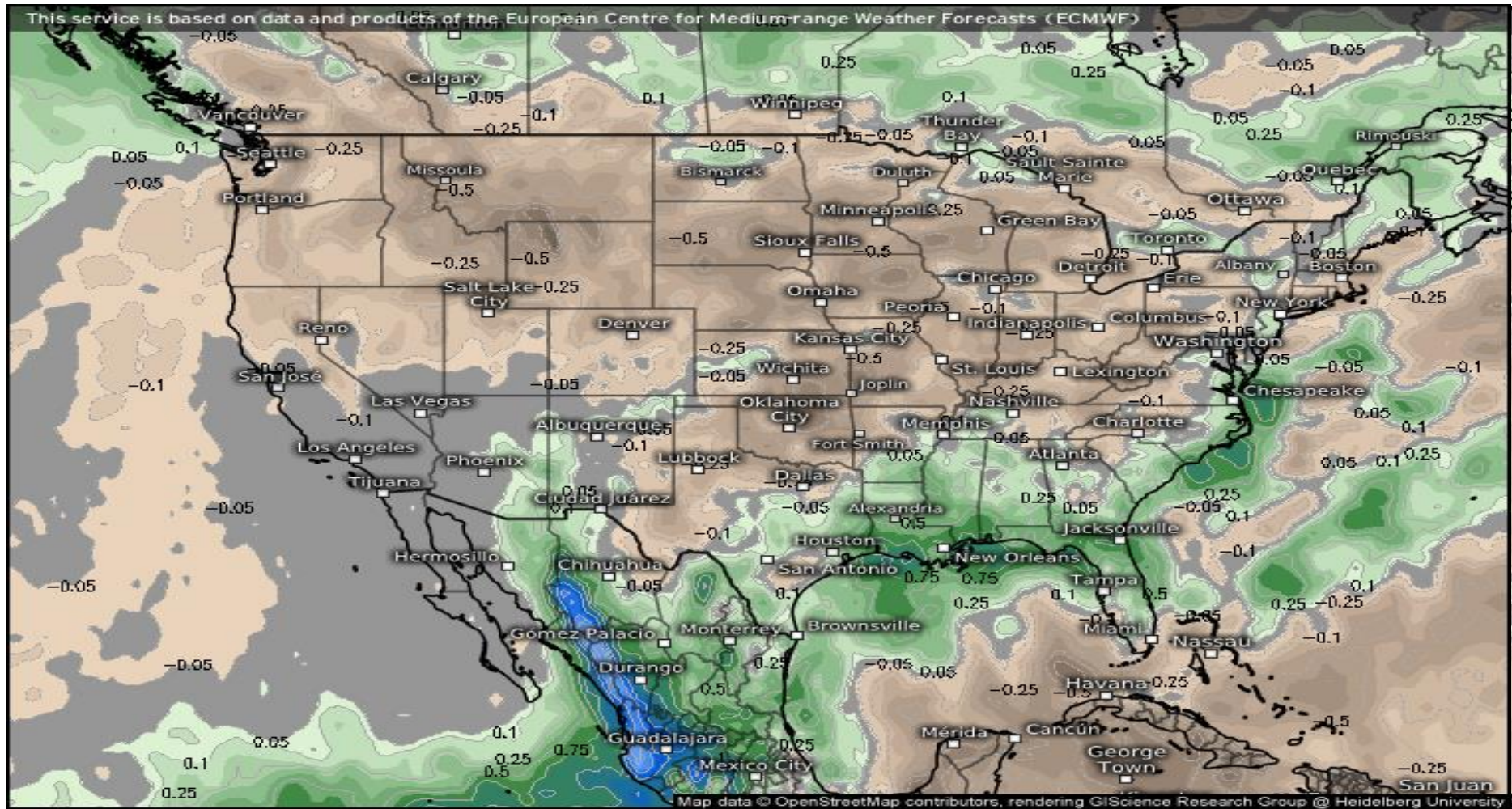
Anomaly monthly precipitation (in)



Valid for
May 2021

EURO Seasonal Model Precipitation Forecast

Green/Blue = Wetter Yellow/Brown = Drier White = "Average"



Anomaly monthly precipitation (in)

Valid for
June 2021

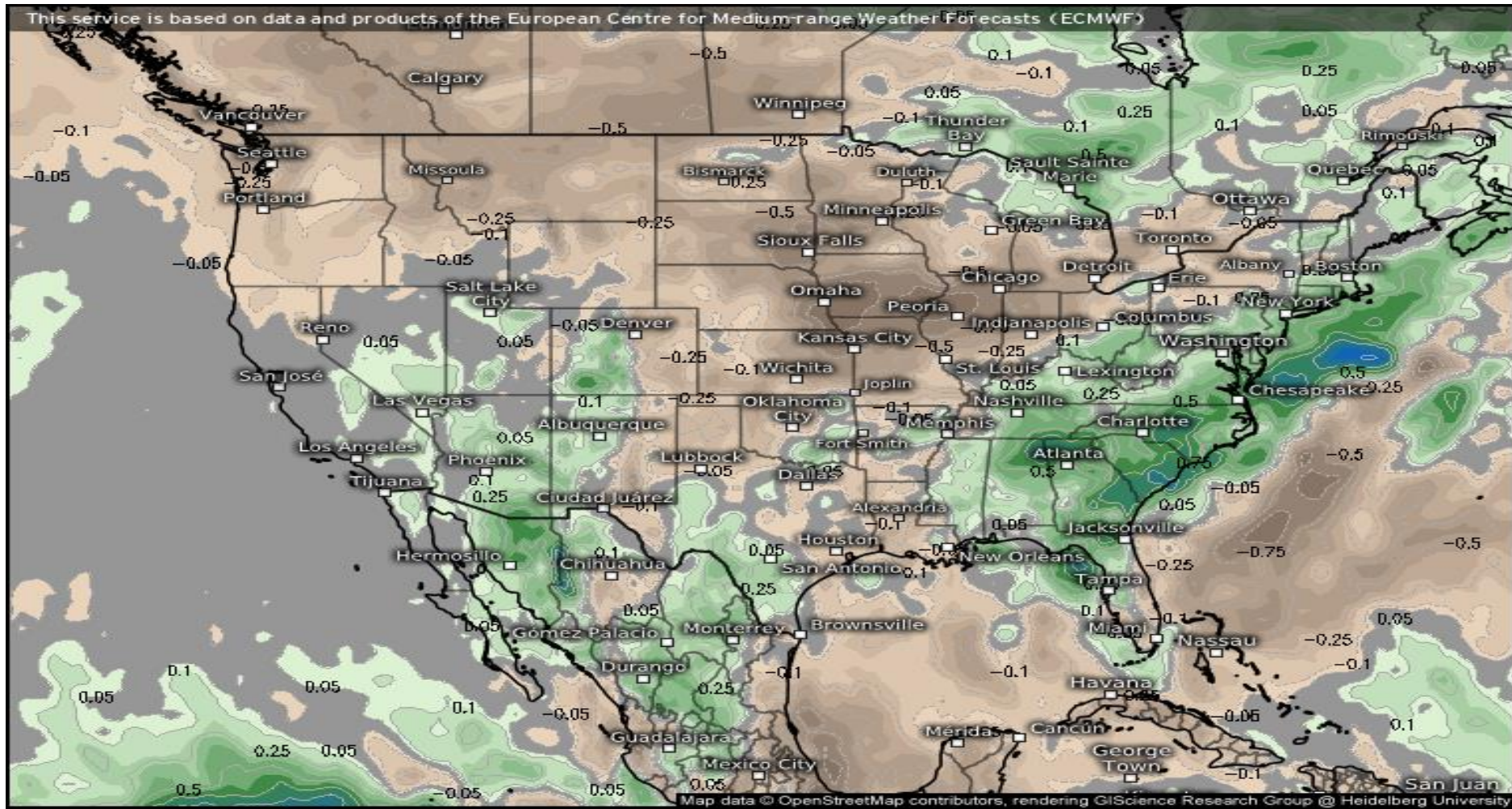


USA
ECMWF SEAS5 (monthly) from 02/01/2021/00z

Model:

EURO Seasonal Model Precipitation Forecast

Green/Blue = Wetter Yellow/Brown = Drier White = "Average"



Anomaly monthly precipitation (in)

Valid for
July 2021



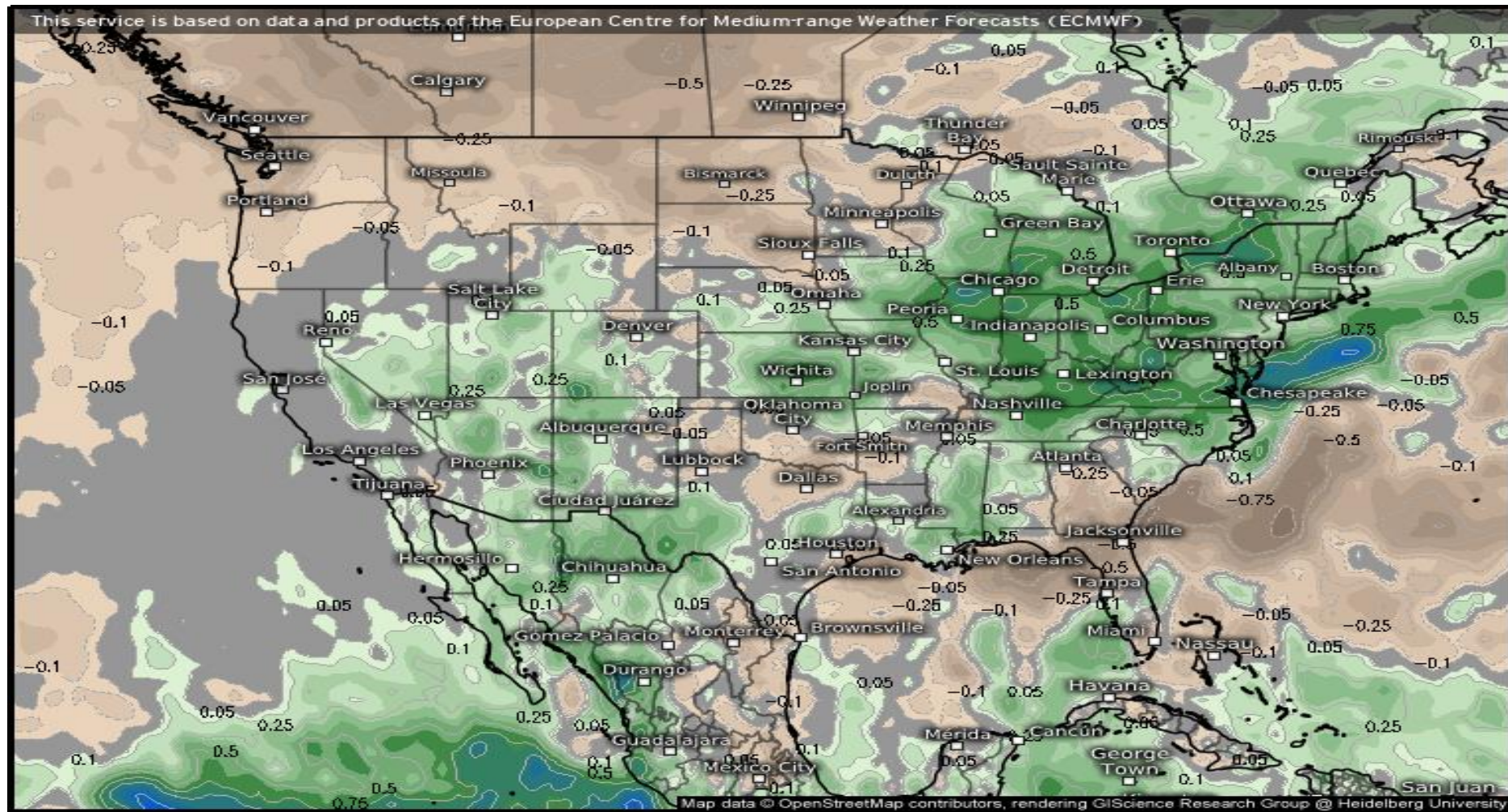
USA

ECMWF SEASS (monthly) from 02/01/2021/00Z

Model:

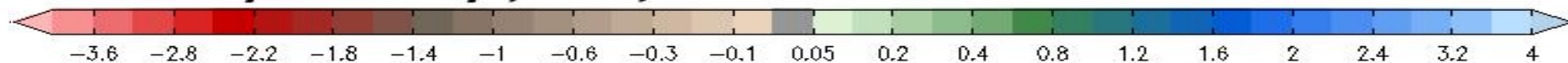
EURO Seasonal Model Precipitation Forecast

Green/Blue = Wetter Yellow/Brown = Drier White = "Average"



Anomaly monthly precipitation (in)

Valid for
August 2021



USA
ECMWF SEAS5 (monthly) from 02/01/2021/00z

Model:

Regional Outlook

Current Conditions and Outlooks

[View Current Conditions](#)

[U.S. Drought Monitor](#) [CPC Seasonal Drought Outlook](#)

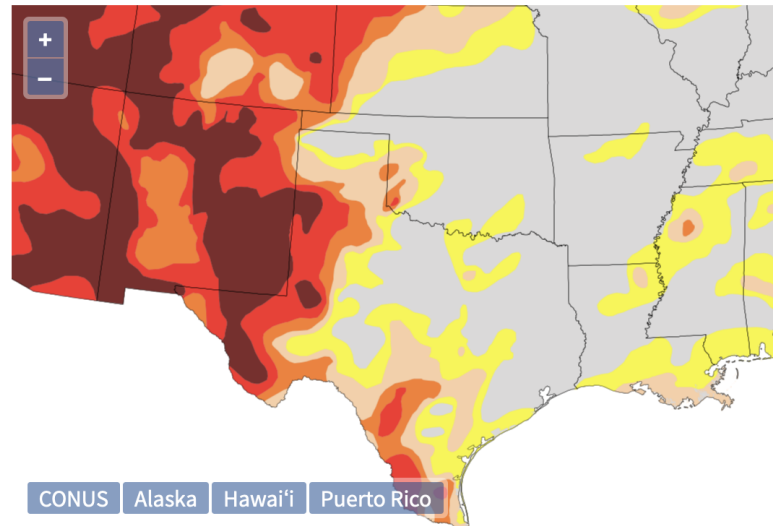
The U.S. Drought Monitor (USDM) is updated each Thursday to show the location and intensity of drought across the country. Drought categories show experts' assessments of conditions related to dryness and drought including observations of how much water is available in streams, lakes, and soils compared to usual for the same time of year.

[Learn More](#)

U.S. Drought Monitor Category

	D0 - Abnormally Dry	56.9%
	D1 - Moderate Drought	38.2%
	D2 - Severe Drought	26.3%
	D3 - Extreme Drought	17.0%
	D4 - Exceptional Drought	7.3%

Source(s): [NDMC](#), [NOAA](#), [USDA](#)



Updates Weekly - 02/02/21

Drought will remain a serious issue for many areas. The farther west/southwest you live the stronger the dry signal will likely be. There will still be storms, but the frequency/potency will be greater farther east...

- brianbledsoewx@gmail.com
- E-Mail Anytime
- Twitter @BrianBledsoe
- Need weather for your biz? Just ask for a quote...