

U.S. LIVESTOCK



**The Farm Security Administration farmsteads, Holstein calves, Scottsbluff (vicinity),
Nebraska, September 1941**

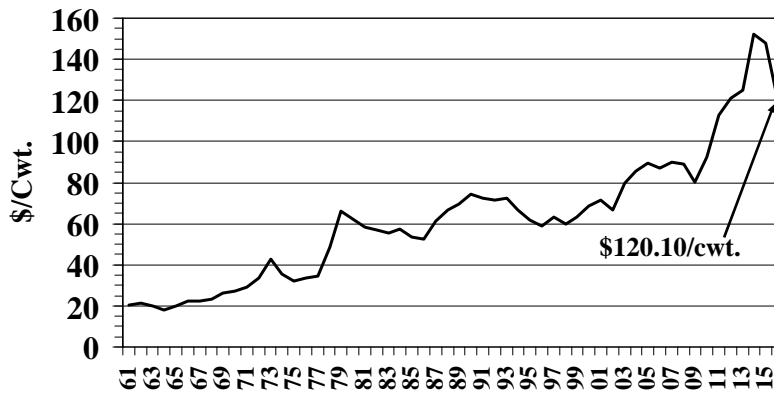
**U.S. Marketing Year Average Prices Received by Farmers, Livestock and Livestock Products,
1965-2016**

Year	Beef Cattle	Calves	Hogs	Sheep	Lambs	Commercial Broilers	Market Eggs	Milk (Wholesale)
	-----\$/cwt.-----					¢/lb.	¢/doz.	\$/cwt.
1965	19.90	22.10	20.60	6.34	22.80	15.00	33.70	4.23
1966	22.20	26.00	22.80	6.84	23.40	15.30	39.10	4.81
1967	22.30	26.30	18.90	6.35	22.10	13.30	31.20	5.02
1968	23.40	27.60	18.50	6.55	24.40	14.20	34.00	5.24
1969	26.20	31.50	22.20	8.24	27.20	15.20	40.00	5.49
1970	27.10	34.50	22.70	7.51	26.40	13.60	39.10	5.71
1971	29.00	36.40	17.50	6.59	25.90	13.70	31.40	5.87
1972	33.50	44.70	25.10	7.28	29.10	14.10	30.90	6.07
1973	42.80	56.60	38.40	12.70	35.10	24.00	52.50	7.14
1974	35.60	35.20	34.20	11.30	37.00	21.50	53.30	8.33
1975	32.20	27.20	46.10	11.30	42.10	26.30	52.50	8.75
1976	33.70	34.10	43.30	13.10	46.90	23.60	58.40	9.66
1977	34.40	36.90	39.40	13.50	51.30	23.60	55.60	9.72
1978	48.50	59.10	46.60	21.80	62.80	26.30	52.20	10.60
1979	66.10	88.70	41.80	26.30	66.70	26.00	58.30	12.02
1980	62.40	76.80	38.00	21.10	63.60	27.70	56.30	13.05
1981	58.60	64.00	43.90	21.20	54.90	28.50	63.10	13.77
1982	56.70	59.80	52.30	19.50	53.10	26.90	59.50	13.61
1983	55.50	61.70	46.80	15.70	53.90	28.60	61.10	13.58
1984	57.30	59.90	47.10	16.40	60.10	33.70	72.30	13.46
1985	53.70	62.10	44.00	23.90	67.70	30.10	57.20	12.76
1986	52.60	61.10	49.30	25.60	69.00	34.50	61.50	12.51
1987	61.10	78.50	51.20	29.50	77.60	28.70	54.70	12.54
1988	66.60	89.20	42.30	25.60	69.10	33.10	52.80	12.26
1989	69.50	90.80	42.50	24.40	66.10	36.60	68.90	13.56
1990	74.60	95.60	53.70	23.20	55.50	32.60	70.90	13.74
1991	72.70	98.00	49.10	19.70	52.20	30.80	67.80	12.27
1992	71.30	89.00	41.60	25.80	59.50	31.80	57.60	13.15
1993	72.60	91.20	45.20	28.60	64.40	34.00	63.40	12.84
1994	66.70	87.20	39.90	30.90	65.60	35.00	61.50	13.01
1995	61.80	73.10	40.50	28.00	78.20	34.40	62.50	12.78
1996	58.70	58.40	51.90	29.90	88.20	38.10	75.00	14.75
1997	63.10	78.90	52.90	37.90	90.30	37.70	70.30	13.36
1998	59.60	78.80	34.40	30.60	72.30	39.30	66.80	15.46
1999	63.40	87.70	30.30	31.10	74.50	37.10	62.10	14.38
2000	68.60	104.00	42.30	34.30	79.80	33.60	61.70	12.40
2001	71.30	106.00	44.40	34.60	66.90	39.30	62.20	15.04
2002	66.50	96.40	33.40	27.90	73.80	30.50	58.90	12.18
2003	79.70	102.00	37.20	34.90	94.40	34.60	57.60	12.55
2004	85.80	119.00	49.30	38.80	101.00	44.60	55.90	16.13
2005	89.70	135.00	50.20	45.10	110.00	43.60	34.80	15.19
2006	87.20	133.00	46.00	35.20	95.50	38.60	40.30	12.96
2007	89.90	119.00	46.60	31.00	98.50	43.60	74.60	19.21
2008	89.10	110.00	47.00	27.20	99.60	45.80	97.40	18.45
2009	80.30	105.00	41.60	32.50	99.60	45.70	65.32	12.93
2010	92.20	117.00	54.10	49.70	125.00	49.20	70.22	16.35
2011	113.00	142.00	65.30	NA	NA	45.90	78.10	20.24
2012	121.00	172.00	64.20	NA	NA	50.00	81.54	18.56
2013	125.00	181.00	67.20	NA	NA	60.70	86.48	20.11
2014	152.00	261.00	76.50	NA	NA	63.70	103.50	24.07
2015	147.92	247.00	55.30	NA	NA	53.80	156.75	17.21
2016*	120.10	160.00	49.30	NA	NA	47.80	50.23	16.34

Source: USDA/NASS/QuickStats Program; Annual "Agricultural Prices", various years

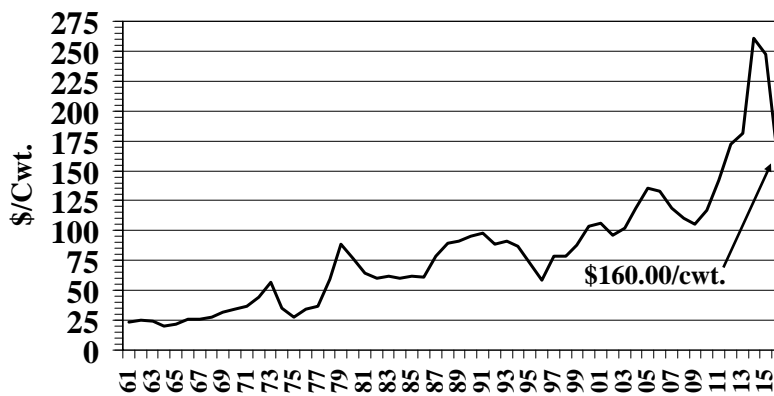
* Preliminary

U.S. Beef Cattle Prices Received 1961 - 2016



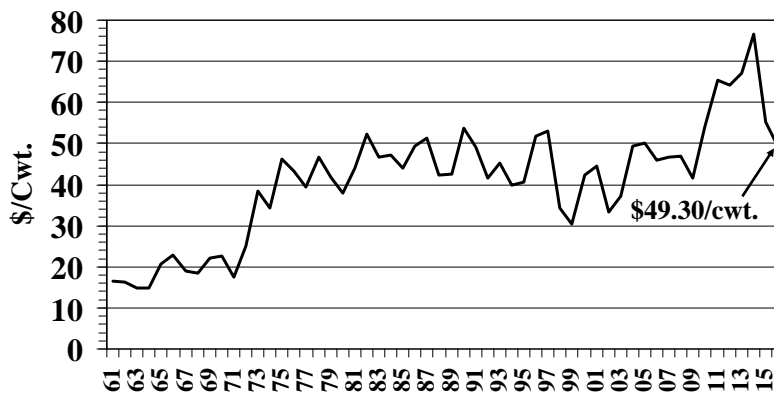
2016 Preliminary
Note: Prices Received by Farmers

U.S. Calf Prices Received 1961 - 2016



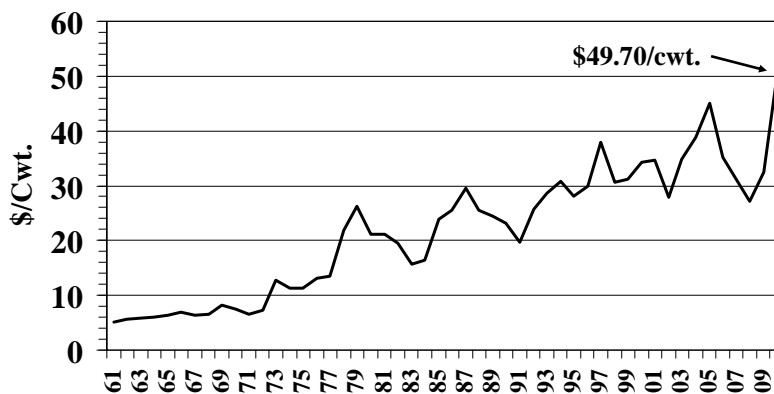
2016 Preliminary
Note: Prices Received by Farmers

U.S. Hog Prices Received 1961 - 2016



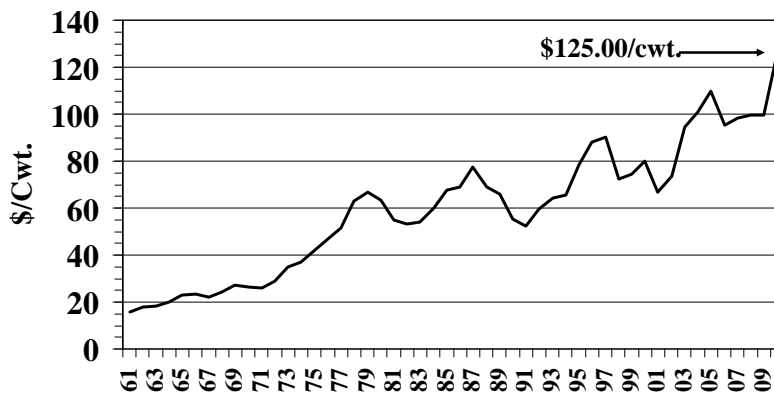
2016 Preliminary
Note: Prices Received by Farmers

U.S. Sheep Prices Received 1961 - 2010



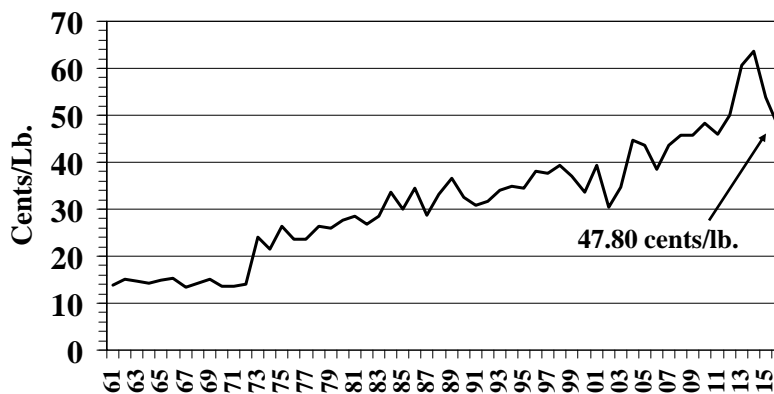
Numbers not reported after 2010
Note: Prices Received by Farmers

U.S. Lamb Prices Received 1961 - 2010



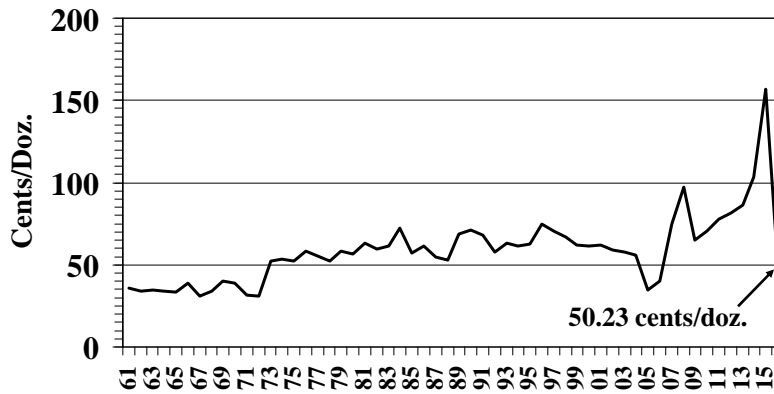
Numbers not reported after 2010
Note: Prices Received by Farmers

U.S. Commercial Broiler Prices Received 1961 - 2016



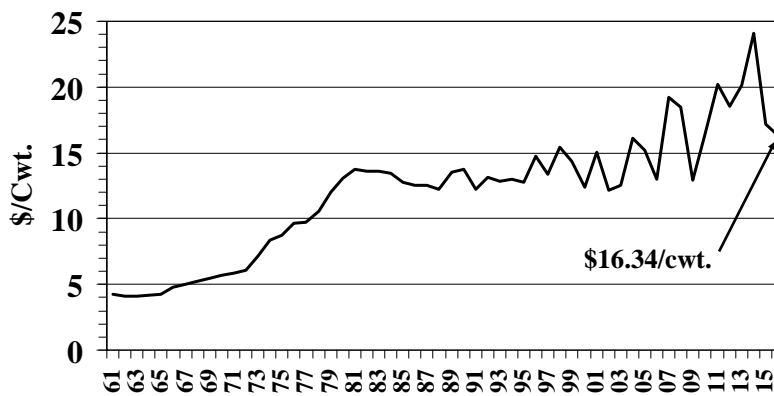
2016 preliminary
Note: Prices Received by Farmers

U.S. Market Egg Prices Received 1961 - 2016



2016 Preliminary
Note: Prices Received by Farmers

U.S. Milk (Wholesale) Prices Received 1961 - 2016



2016 Preliminary
Note: Prices Received by Farmers

U.S. Livestock Numbers and Values

Class of Livestock	Number of Head			2017 as % of 2016	Farm Value					
	2015	2016	2017 Preliminary		Value Per Head			Total Value		
					2015	2016	2017	2015	2016	2017
	Thousands			%	Dollars			1,000 Dollars		
All Cattle†	89,143	91,918	93,585	102	1,584	1,410	1,109	141,211,070	129,614,960	103,807,368
Beef Cows*†	29,302	30,166	31,210	103	---	---	---	---	---	---
Milk Cows*†	9,307	9,310	9,349	100	---	---	---	---	---	---
Hogs**	68,919	71,500	NA	---	96	92	NA	6,626,607	6,591,568	NA
All Sheep†	5,280	5,300	5,200	98	214	202	203	1,129,447	1,072,429	1,053,788
Angora Goats†	160	150	152	103	124	117	131	16,850	14,757	16,827
Chickens**	476,981	474,524	NA	---	4.37	4.20	NA	2,085,151	2,075,417	NA
Total Value	---	---	---	---	---	---	---	151,069,125	139,369,131	104,877,983

* Value per head and total value included in "All Cattle."

**Figures as of December 1. Chicken inventory excludes broilers. Turkey figures not released to avoid disclosing individual operations.

†Figures are as of January 1.

NA = Not Available.

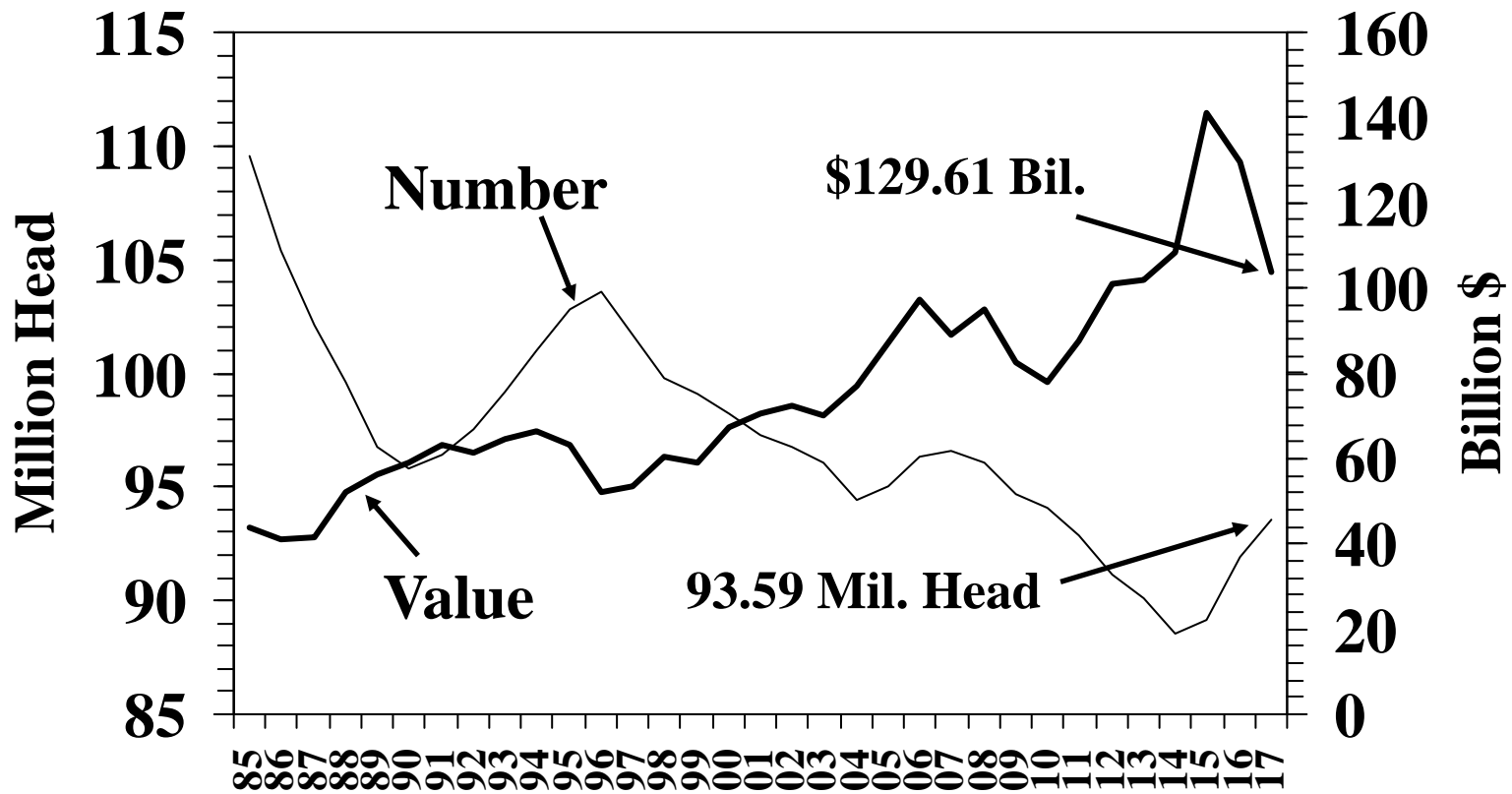
Numbers may not add due to rounding.

U.S. All Cattle Inventory and Value

Year	January 1 Inventory 1,000 Head	Average Price Per Head Dollars	Value \$1,000
1985	109,582	402	44,006,068
1986	105,378	391	41,230,884
1987	102,118	407	41,567,085
1988	99,622	523	52,147,608
1989	96,740	581	56,210,694
1990	95,816	616	58,990,357
1991	96,393	655	63,090,155
1992	97,556	630	61,451,310
1993	99,176	649	64,436,369
1994	100,974	659	66,512,551
1995	102,785	615	63,185,288
1996	103,548	503	52,055,705
1997	101,656	525	53,383,392
1998	99,744	603	60,193,070
1999	99,115	594	58,833,650
2000	98,199	683	67,100,220
2001	97,298	725	70,510,630
2002	96,723	747	72,300,065
2003	96,100	728	69,952,520
2004	94,403	818	77,201,950
2005	95,018	916	87,023,945
2006	96,342	1,009	97,230,415
2007	96,573	922	89,063,310
2008	96,035	990	95,112,820
2009	94,721	872	82,628,170
2010	94,081	833	78,335,410
2011	92,887	947	87,988,337
2012	91,160	1,111	101,252,540
2013	90,095	1,139	102,617,904
2014	88,526	1,223	108,255,950
2015	89,143	1,584	141,211,070
2016	91,918	1,410	129,614,960
2017	93,585	1,109	103,807,368

Source: USDA/NASS Quick Stats

U.S. All Cattle Number and Value 1985 - 2017



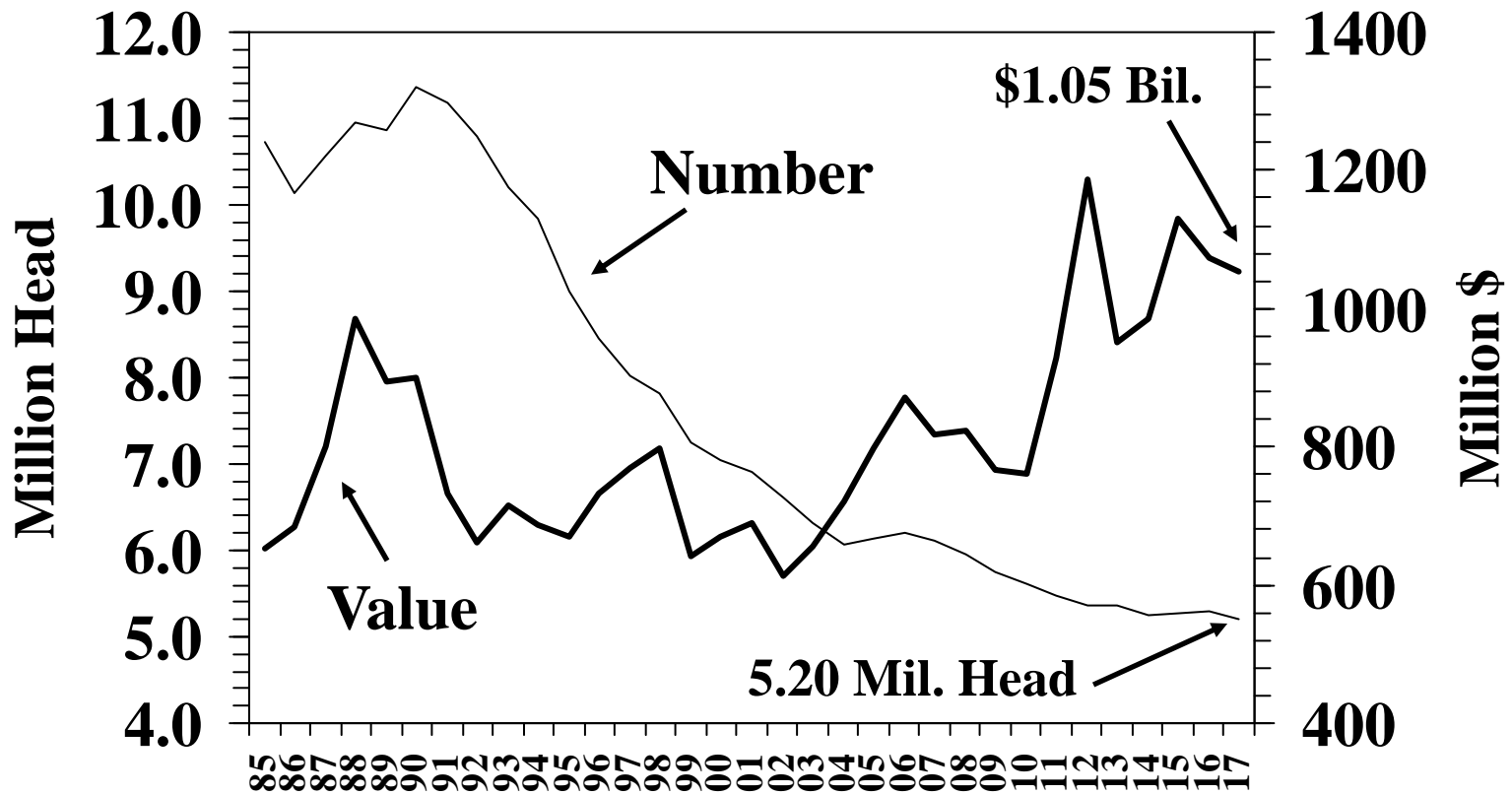
January 1 inventory

U.S. Sheep and Lambs and Wool Inventory and Value

Year	Sheep and Lambs		Wool	
	Number	Total Value	Production	Value
	1,000 Head	1,000 \$	1,000 Lbs.	1,000 \$
1985	10,716	654,079	88,055	55,732
1986	10,145	684,038	84,372	56,331
1987	10,572	799,254	84,450	77,009
1988	10,945	984,961	89,467	110,724
1989	10,853	894,410	89,243	110,573
1990	11,358	901,092	87,959	69,486
1991	11,174	732,600	87,644	47,124
1992	10,797	660,746	82,943	60,162
1993	10,201	714,163	77,513	39,071
1994	9,836	688,038	68,625	52,404
1995	8,989	670,824	63,368	64,122
1996	8,465	732,353	56,159	39,270
1997	8,024	769,079	53,578	44,909
1998	7,825	797,826	49,415	29,440
1999	7,247	640,819	46,428	17,704
2000	7,036	669,890	45,551	14,948
2001	6,908	690,489	42,156	14,841
2002	6,623	614,466	41,078	21,689
2003	6,321	656,638	38,197	28,129
2004	6,065	720,443	37,581	29,954
2005	6,135	798,209	37,182	26,249
2006	6,200	872,351	35,899	24,300
2007	6,120	818,491	34,723	30,242
2008	5,950	823,424	32,963	32,486
2009	5,747	765,194	30,860	24,337
2010	5,620	761,115	30,360	35,013
2011	5,470	929,453	29,280	48,920
2012	5,375	1,187,730	27,630	41,972
2013	5,360	951,020	26,990	39,209
2014	5,245	984,236	26,680	38,909
2015	5,280	1,129,447	27,015	39,205
2016	5,300	1,072,429	25,740	37,214
2017	5,200	1,053,788	NA	NA

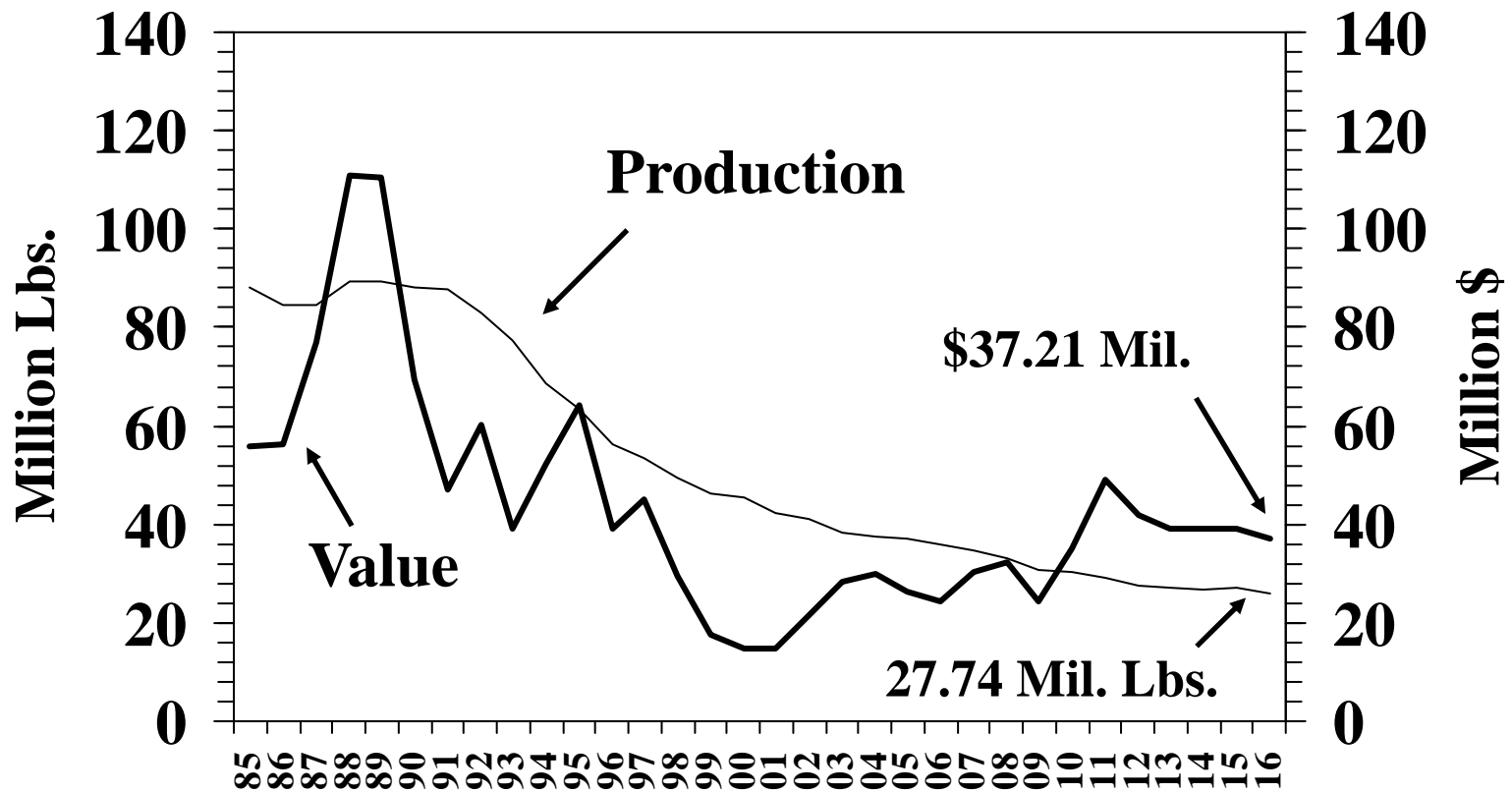
Source: USDA/NASS Quick Stats
January 1 inventory

U.S. Sheep Number and Total Value 1985 - 2017



January 1 inventory

U.S. Wool Production and Value 1985 - 2016



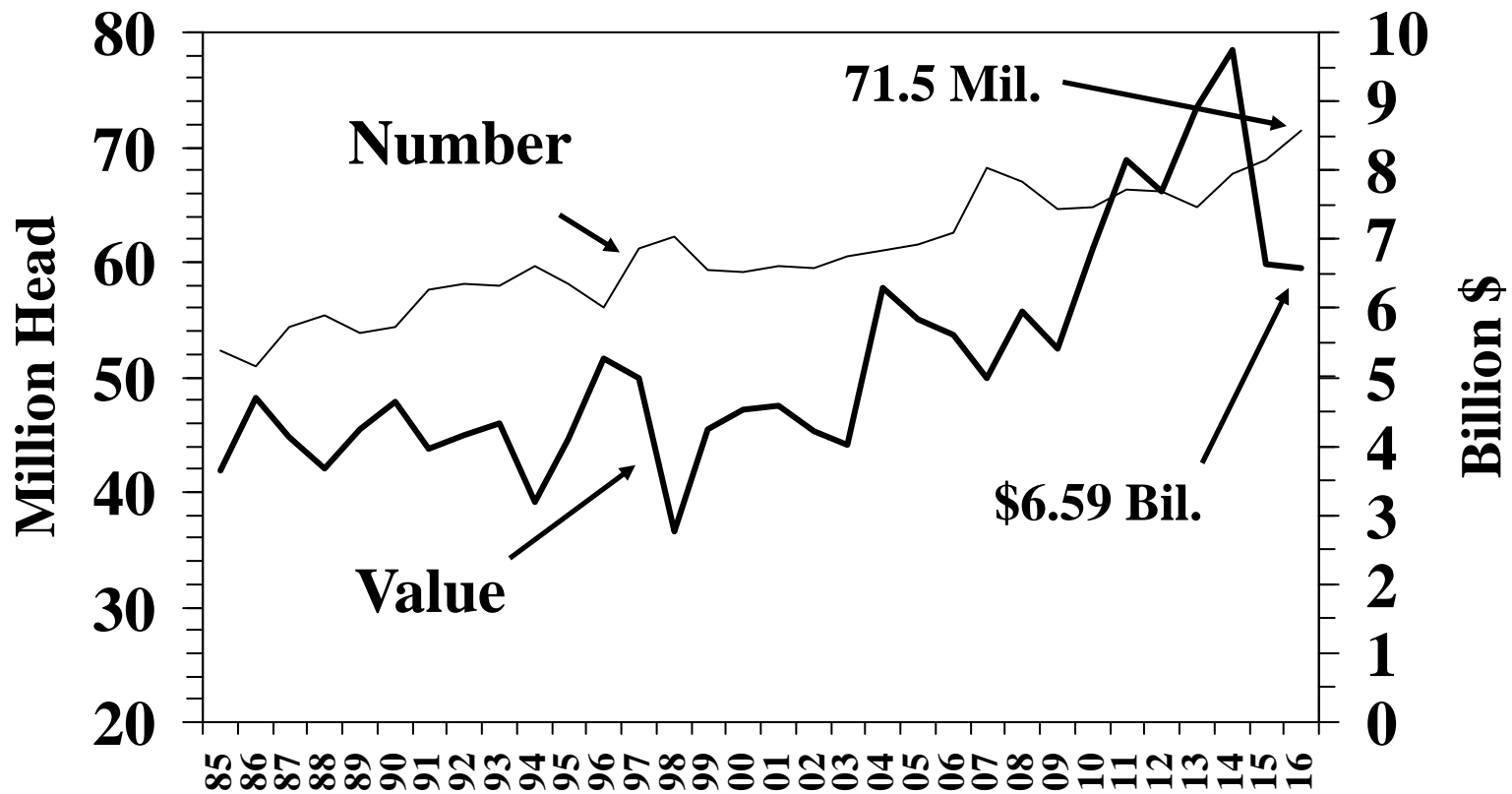
January 1 inventory

U.S. Hog Inventory and Value

Year	December 1 Inventory 1,000 Head	Average Price Per Head Dollars	Value \$1,000
1985	52,314	69.60	3,640,420
1986	51,001	91.90	4,686,943
1987	54,384	76.00	4,132,872
1988	55,466	66.30	3,677,536
1989	53,788	79.10	4,252,885
1990	54,416	85.40	4,647,808
1991	57,649	68.80	3,966,276
1992	58,202	71.20	4,146,646
1993	57,940	75.00	4,339,509
1994	59,738	53.00	3,178,123
1995	58,201	71.00	4,115,118
1996	56,124	94.00	5,280,742
1997	61,158	82.00	4,985,532
1998	62,204	44.00	2,765,745
1999	59,335	72.00	4,253,785
2000	59,110	77.00	4,540,410
2001	59,722	77.00	4,584,078
2002	59,554	71.00	4,230,728
2003	60,453	67.00	4,024,626
2004	60,982	103.00	6,306,282
2005	61,463	95.00	5,833,763
2006	62,516	90.00	5,598,613
2007	68,177	73.00	4,986,206
2008	67,048	89.00	5,950,133
2009	64,687	83.00	5,399,437
2010	64,725	106.00	6,880,179
2011	66,259	123.00	8,145,169
2012	66,224	116.00	7,683,152
2013	64,775	138.00	8,921,822
2014	67,776	144.00	9,754,191
2015	68,919	96.00	6,626,607
2016	71,500	92.00	6,591,568

Source: USDA/NASS Quick Stats

U.S. Hog Inventory and Value 1985 - 2016



December 1 Inventory