

# ***U.S. CROPS***



**Mechanical corn-picker in Grundy County, Iowa, October 1939**

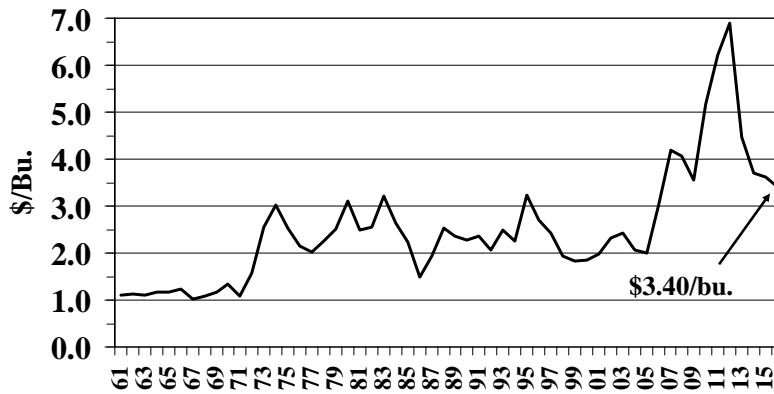
### U.S. Marketing Year Average Prices Received by Farmers, Crops, 1965-2016

Year	Corn for Grain	Upland Cotton	All Hay	Oats	Peanuts	Rice	Grain Sorghum	Wheat
	\$/bu.	¢/lb.	\$/ton	\$/bu.	¢/lb.	\$/cwt.	\$/cwt.	\$/bu.
1965	1.16	29.30	23.20	0.62	11.40	4.93	1.76	1.35
1966	1.24	21.50	25.00	0.67	11.30	4.95	1.82	1.63
1967	1.03	26.50	24.50	0.66	11.40	4.97	1.77	1.39
1968	1.08	23.00	23.60	0.60	11.90	5.00	1.69	1.24
1969	1.16	21.90	24.70	0.58	12.30	4.95	1.91	1.25
1970	1.33	21.90	26.10	0.62	12.80	5.17	2.04	1.33
1971	1.08	28.10	28.10	0.60	13.60	5.34	1.86	1.34
1972	1.57	27.20	31.30	0.72	14.50	6.73	2.45	1.76
1973	2.55	44.40	41.60	1.18	16.20	13.80	3.82	3.95
1974	3.02	42.70	50.90	1.53	17.90	11.20	4.95	4.09
1975	2.54	51.10	52.10	1.45	19.60	8.35	4.21	3.55
1976	2.15	63.80	60.20	1.56	20.00	7.02	3.63	2.73
1977	2.02	52.10	53.70	1.09	21.00	9.49	3.25	2.33
1978	2.25	58.10	49.80	1.20	21.10	8.16	3.59	2.97
1979	2.52	62.30	59.40	1.33	20.60	10.50	4.19	3.78
1980	3.11	74.40	71.00	1.72	25.10	12.80	5.19	3.91
1981	2.50	54.00	67.30	1.88	26.90	9.05	4.01	3.66
1982	2.55	59.50	69.30	1.49	25.00	7.91	4.41	3.45
1983	3.21	65.30	75.80	1.62	24.60	8.57	4.89	3.51
1984	2.63	58.70	74.00	1.67	27.90	8.04	4.15	3.39
1985	2.23	56.80	67.60	1.23	24.40	6.53	3.45	3.08
1986	1.50	51.50	59.80	1.21	29.20	3.75	2.45	2.42
1987	1.94	63.70	65.00	1.56	28.00	7.27	3.04	2.57
1988	2.54	55.60	85.20	2.61	28.00	6.83	4.05	3.72
1989	2.36	63.60	85.40	1.49	28.00	7.35	3.75	3.72
1990	2.28	67.10	80.60	1.14	34.70	6.70	3.79	2.61
1991	2.37	56.80	71.20	1.21	28.30	7.58	4.01	3.00
1992	2.07	53.70	74.30	1.32	30.00	5.89	3.38	3.24
1993	2.50	58.10	84.70	1.36	30.40	7.98	4.13	3.26
1994	2.26	72.00	86.70	1.22	28.90	6.78	3.80	3.45
1995	3.24	75.40	82.20	1.67	29.30	9.15	5.69	4.55
1996	2.71	69.30	95.80	1.96	28.10	9.96	4.17	4.30
1997	2.43	65.20	100.00	1.60	28.30	9.70	3.95	3.38
1998	1.94	60.20	84.60	1.10	28.40	8.89	2.97	2.65
1999	1.82	45.00	76.90	1.12	25.40	5.93	2.80	2.48
2000	1.85	49.80	84.60	1.10	27.40	5.61	3.37	2.62
2001	1.97	29.80	96.50	1.59	23.40	4.25	3.46	2.78
2002	2.32	44.50	92.40	1.81	18.20	4.49	4.14	3.56
2003	2.42	61.80	85.50	1.48	19.30	8.08	4.26	3.40
2004	2.06	41.60	92.00	1.48	18.90	7.33	3.19	3.40
2005	2.00	47.70	98.20	1.63	17.30	7.65	3.33	3.42
2006	3.04	46.50	110.00	1.87	17.70	9.96	5.88	4.26
2007	4.20	59.30	127.00	2.63	20.50	12.80	7.28	6.48
2008	4.06	47.80	152.00	3.15	23.00	16.80	5.72	6.78
2009	3.55	62.90	108.00	2.02	21.70	14.40	5.75	4.87
2010	5.18	81.50	114.00	2.52	22.50	12.70	8.96	5.70
2011	6.22	88.30	178.00	3.49	31.80	14.50	10.70	7.24
2012	6.89	72.50	191.00	3.89	30.10	15.10	11.30	7.77
2013	4.46	77.90	176.00	3.75	24.90	16.30	7.64	6.87
2014	3.70	61.30	172.00	3.21	22.00	13.40	7.20	5.99
2015	3.61	61.20	145.00	2.12	19.30	12.20	5.91	4.89
2016*	3.40	67.10	132.00	2.00	18.90	10.50	4.80	3.85

Source: USDA/NASS/Quick Stats Program.

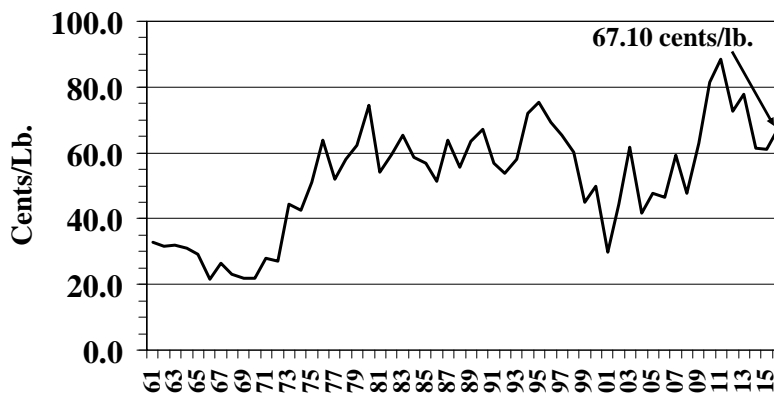
\*Preliminary

## U.S. Corn for Grain Prices Received 1961 - 2016



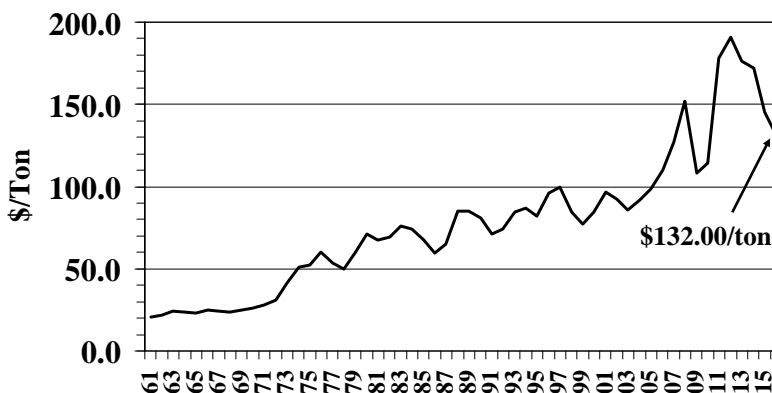
2016 Preliminary  
Note: Prices Received by Farmers

## U.S. Upland Cotton Prices Received 1961 - 2016



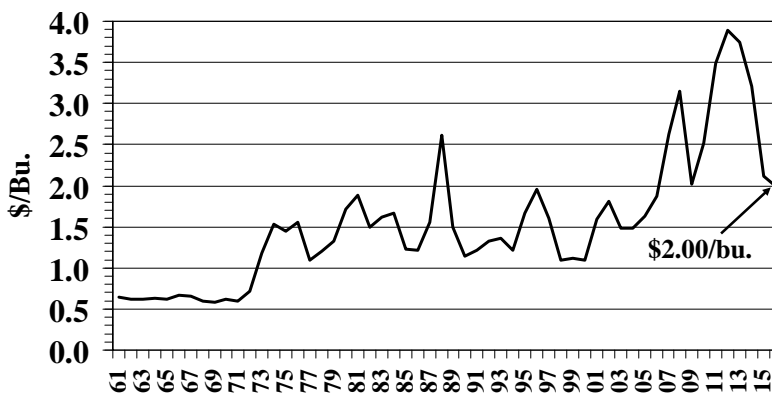
2016 Preliminary  
Note: Prices Received by Farmers

## U.S. All Hay Prices Received 1961 - 2016



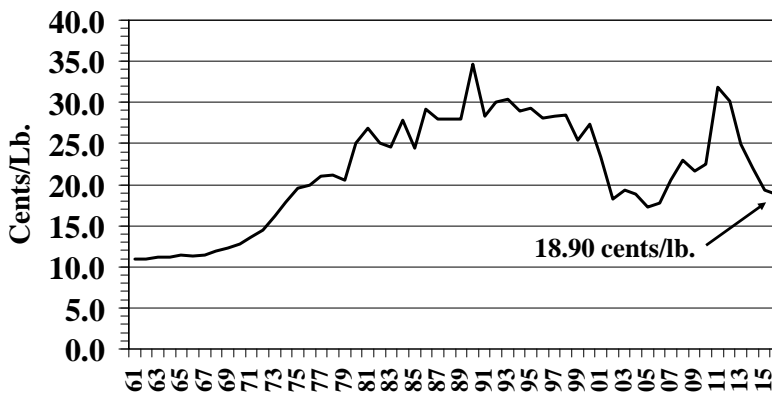
2016 Preliminary  
Note: Prices Received by Farmers

## U.S. Oat Prices Received 1961 - 2016



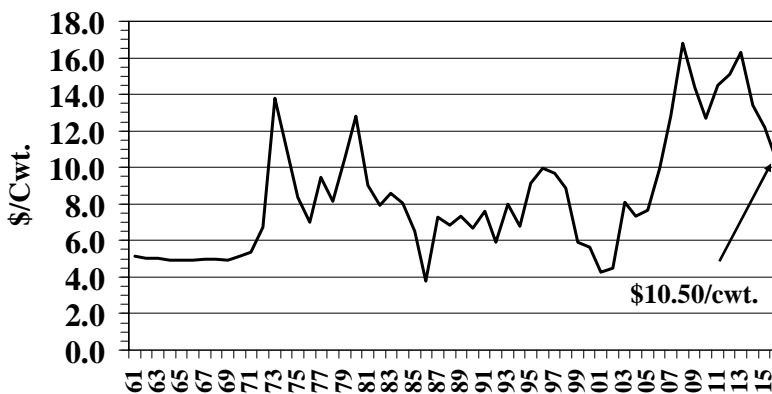
2016 Preliminary  
Note: Prices Received by Farmers

## U.S. Peanuts Prices Received 1961 - 2016



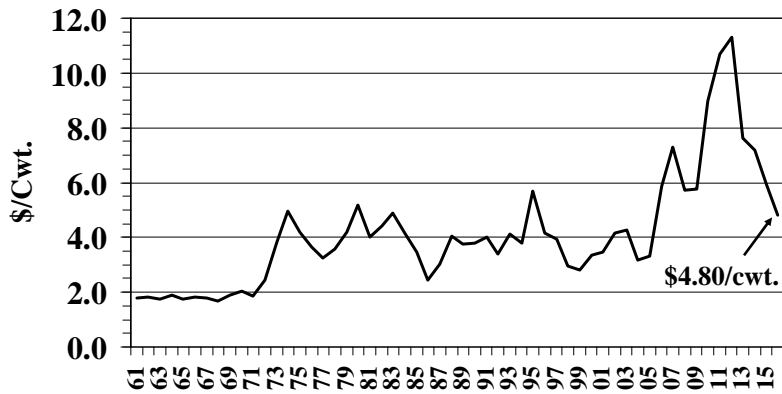
2016 Preliminary  
Note: Prices Received by Farmers

## U.S. Rice Prices Received 1961 - 2016



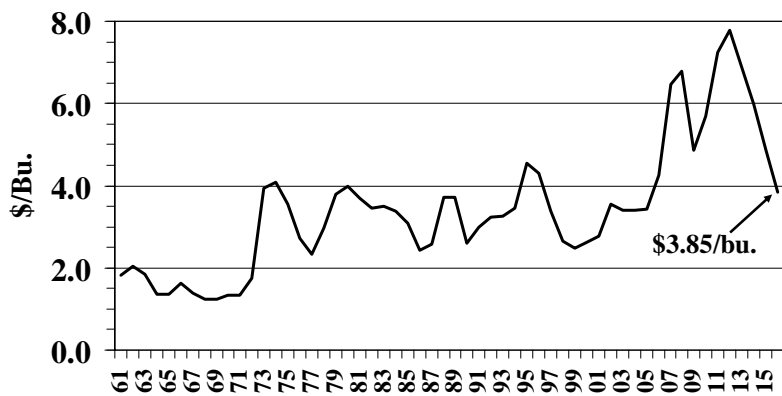
2016 Preliminary  
Note: Prices Received by Farmers

## U.S. Grain Sorghum Prices Received 1961 - 2016



2016 Preliminary  
Note: Prices Received by Farmers

## U.S. Wheat Prices Received 1961 - 2016



2016 Preliminary  
Note: Prices Received by Farmers