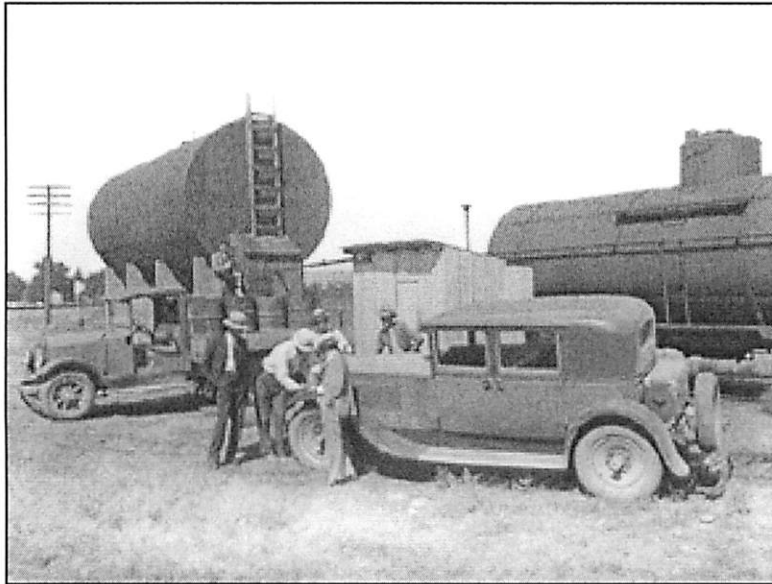


# *U.S. AND TEXAS GENERAL OVERVIEW*



Cooperative oil association plant and delivery truck, Umatilla county, Oregon, 1934

# **AGRICULTURE FUNDAMENTALLY DIFFERENT**

- **Tied to nature, biological, renewable**
- **Demand changes more slowly than supplies**
- **Many producers competing**
- **Farmers are generally price takers**

### Cash Receipt Values for All Commodities, 2003 - 2011

State *	2003	2004	2005	2006	2007	2008	2009	2010	2011
Billion Dollars									
CA	28.23	30.94	32.30	31.43	36.39	37.05	34.59	38.00	43.54
IA	12.85	14.00	14.49	15.22	19.03	23.37	21.90	24.03	29.89
TX	15.44	16.84	16.62	16.14	18.90	19.45	17.11	20.37	22.68
NE	10.95	11.26	11.59	12.35	14.92	16.52	16.08	17.12	21.81
IL	8.55	9.13	8.98	9.06	12.77	15.20	14.95	15.98	19.82
MN	8.87	9.69	9.44	10.31	12.83	15.66	13.79	15.82	18.54
KS	9.13	9.30	10.15	10.36	12.06	12.83	12.59	14.73	15.86
IN	4.96	6.07	5.36	5.99	8.05	9.46	8.94	9.74	11.84
WI	6.14	7.16	7.07	7.14	8.87	9.52	7.57	9.22	11.74
NC	6.93	8.20	8.15	7.90	8.81	9.65	9.10	9.73	10.54
MO	5.41	6.05	5.95	5.89	7.42	8.31	7.64	8.49	9.71
OH	4.59	5.30	5.16	5.40	6.59	7.64	7.13	7.99	9.65
SD	4.19	4.59	4.83	4.72	5.92	7.67	7.38	7.47	9.41
WA	5.62	5.75	5.94	6.18	7.37	7.97	6.90	7.51	8.67
AR	5.51	6.47	6.47	5.97	7.30	8.38	7.28	7.85	8.42
GA	5.37	6.09	6.19	5.64	6.81	7.54	6.80	7.56	8.35
FL	6.70	6.78	7.45	7.32	8.04	7.81	7.14	7.84	8.26
MI	3.83	4.29	4.23	4.59	5.84	6.55	5.63	6.63	8.05
ND	3.84	3.87	3.88	4.11	5.85	6.86	6.64	6.92	7.34
ID	3.94	4.41	4.52	4.59	5.72	6.22	5.14	5.89	7.33
CO	4.96	5.44	5.47	5.77	6.27	6.31	5.57	6.08	7.08
OK	4.53	5.04	5.43	5.02	5.23	5.67	4.88	6.16	7.06
PA	4.27	5.03	4.82	4.65	5.74	6.09	4.99	5.83	6.69
MS	3.71	3.97	4.17	3.63	4.45	4.92	4.50	4.96	5.36
NY	3.07	3.53	3.56	3.39	4.36	4.77	3.77	4.42	5.26
KY	3.47	4.13	3.99	4.03	4.49	4.72	4.35	4.45	4.92
AL	3.64	4.19	4.19	3.61	4.10	4.47	4.16	4.62	4.85
OR	3.35	3.65	3.67	4.14	4.26	4.34	3.82	3.74	4.62
AZ	2.62	3.06	3.17	2.99	3.57	3.45	2.98	3.44	4.31
NM	2.14	2.57	2.61	2.50	3.08	3.06	2.64	3.27	4.11
MT	1.91	2.20	2.29	2.27	2.48	2.82	2.73	3.04	3.54
TN	2.62	2.59	2.59	2.51	2.92	2.97	2.99	3.14	3.50
LA	2.11	2.18	2.17	2.10	2.75	3.00	2.71	3.08	3.46
VA	2.39	2.65	2.64	2.57	2.84	3.06	2.68	2.90	3.30
SC	1.64	1.89	1.83	1.83	2.04	2.36	2.19	2.42	2.60
MD	1.32	1.57	1.52	1.47	1.74	1.88	1.76	1.84	2.09
UT	1.15	1.28	1.36	1.22	1.38	1.47	1.08	1.35	1.61
WY	0.91	1.08	0.97	1.02	1.03	1.04	1.04	1.16	1.45
NJ	0.85	0.87	0.91	0.98	1.08	1.10	1.01	1.04	1.12
DE	0.75	0.91	0.94	0.81	0.98	1.04	1.01	1.06	1.08
VT	0.49	0.59	0.57	0.51	0.69	0.68	0.51	0.61	0.76
HI	0.55	0.56	0.58	0.58	0.58	0.61	0.63	0.69	0.72
ME	0.53	0.57	0.54	0.55	0.64	0.68	0.56	0.63	0.72
NV	0.39	0.47	0.48	0.50	0.53	0.57	0.52	0.56	0.68
WV	0.40	0.43	0.46	0.45	0.50	0.52	0.50	0.52	0.56
CT	0.48	0.51	0.51	0.48	0.57	0.58	0.51	0.52	0.56
MA	0.39	0.42	0.41	0.44	0.48	0.56	0.46	0.47	0.52
NH	0.16	0.17	0.17	0.17	0.20	0.20	0.17	0.18	0.19
RI	0.06	0.06	0.06	0.06	0.07	0.06	0.06	0.06	0.06
AK	0.03	0.03	0.04	0.03	0.03	0.03	0.03	0.03	0.03
US	215.97	237.85	240.90	240.62	288.55	316.67	289.12	321.15	374.25

\*States are listed in order of importance for 2011 dollars.

March 1, 2013

Source: ERS/USDA

# State Ranking by Cash Receipts

## 2009, 2010, 2011

(Billion \$)

State	2009	State	2010	State	2011
1. California	34.59	1. California	38.00	1. California	43.54
2. Iowa	21.90	2. Iowa	24.03	2. Iowa	29.89
3. <i>Texas</i>	<i>17.11</i>	3. <i>Texas</i>	<i>20.37</i>	3. <i>Texas</i>	<i>22.68</i>
4. Nebraska	16.08	4. Nebraska	17.12	4. Nebraska	21.81
5. Illinois	14.95	5. Illinois	15.98	5. Illinois	19.82

*\*Government payments and ag-related activities not included.*

Ranking of States for Total Net Farm Income, Value of Production Per Acre, and Net Farm Income Per Acre and Per Operation for 2011

Rank	Net Farm Income		Net Farm Income Per Operation		Value of Production Per Operation <sup>1/</sup>		Net Farm Income Per Acre		Value of Production Per Acre <sup>1/</sup>	
	State	Dollars	State	Dollars per operation	State	Dollars per operation	State	Dollars per acre	State	Dollars per acre
		\$1,000								
1	California	\$16,304,937	California	\$200,061	California	\$581,875	California	\$642	Delaware	\$2,515
2	Iowa	\$10,813,218	Nebraska	\$159,332	Nebraska	\$507,841	New Jersey	\$531	California	\$1,867
3	Nebraska	\$7,456,742	South Dakota	\$147,600	Delaware	\$492,984	Delaware	\$402	New Jersey	\$1,795
4	Illinois	\$6,099,710	Iowa	\$117,153	Iowa	\$353,819	Connecticut	\$359	Connecticut	\$1,662
5	Minnesota	\$5,784,631	Arizona	\$102,004	South Dakota	\$346,165	North Carolina	\$354	North Carolina	\$1,405
6	<b>Texas</b>	<b>\$5,343,913</b>	Idaho	\$98,833	Arizona	\$327,761	Iowa	\$352	Massachusetts	\$1,270
7	Kansas	\$5,191,219	Illinois	\$81,766	Idaho	\$324,697	Michigan	\$335	Maryland	\$1,219
8	South Dakota	\$4,619,874	Kansas	\$79,255	Illinois	\$283,592	Ohio	\$286	Rhode Island	\$1,159
9	Ohio	\$3,886,437	Delaware	\$78,843	Nevada	\$274,378	Maryland	\$269	Iowa	\$1,064
10	Indiana	\$3,803,890	Nevada	\$75,808	Kansas	\$264,303	Pennsylvania	\$267	Pennsylvania	\$996
11	Wisconsin	\$3,802,732	Washington	\$75,580	North Dakota	\$258,254	Indiana	\$259	Florida	\$967
12	Michigan	\$3,347,852	Minnesota	\$72,489	Minnesota	\$247,835	New York	\$254	Georgia	\$954
13	Missouri	\$3,333,185	North Dakota	\$68,060	Washington	\$244,822	Wisconsin	\$254	Michigan	\$903
14	North Carolina	\$3,006,876	Indiana	\$61,353	North Carolina	\$236,923	Massachusetts	\$247	Indiana	\$877
15	Washington	\$2,985,398	Michigan	\$60,981	Colorado	\$222,789	Florida	\$244	Wisconsin	\$866
16	Georgia	\$2,463,208	North Carolina	\$59,660	Georgia	\$209,029	Georgia	\$239	New York	\$817
17	Idaho	\$2,441,177	New Mexico	\$58,584	Indiana	\$207,936	Illinois	\$229	Ohio	\$805
18	Florida	\$2,260,882	Ohio	\$52,733	Maryland	\$195,265	Minnesota	\$215	Illinois	\$795
19	North Dakota	\$2,171,118	Georgia	\$52,409	Arkansas	\$189,751	Vermont	\$214	Hawaii	\$738
20	Pennsylvania	\$2,041,593	Wisconsin	\$49,386	Florida	\$188,401	Idaho	\$214	Minnesota	\$737
21	New York	\$1,776,073	New York	\$49,335	New Mexico	\$184,184	Hawaii	\$208	Idaho	\$704
22	Colorado	\$1,669,699	Florida	\$47,598	Wisconsin	\$168,709	Washington	\$202	Arkansas	\$679
23	Arizona	\$1,581,056	Colorado	\$45,496	Wyoming	\$164,542	Maine	\$175	Vermont	\$677
24	Oklahoma	\$1,510,315	Maryland	\$43,057	Michigan	\$164,474	Nebraska	\$164	Washington	\$653
25	Kentucky	\$1,508,656	Louisiana	\$41,109	New York	\$158,811	Rhode Island	\$163	Alabama	\$634
26	Arkansas	\$1,422,739	New Jersey	\$37,616	Ohio	\$148,564	Louisiana	\$150	South Carolina	\$622
27	New Mexico	\$1,347,424	Vermont	\$37,345	Mississippi	\$148,293	Missouri	\$115	Maine	\$593
28	Mississippi	\$1,254,768	Pennsylvania	\$32,823	Oregon	\$145,488	Kansas	\$113	Mississippi	\$564
29	Louisiana	\$1,192,163	Missouri	\$31,298	Montana	\$141,859	Mississippi	\$113	Virginia	\$533
30	Oregon	\$1,029,169	Hawaii	\$30,832	Connecticut	\$135,677	Kentucky	\$108	Nebraska	\$522
31	Montana	\$846,608	Wyoming	\$30,011	Louisiana	\$131,057	South Dakota	\$106	New Hampshire	\$521
32	Tennessee	\$799,059	Mississippi	\$29,594	New Jersey	\$127,241	Arkansas	\$105	Louisiana	\$478
33	Virginia	\$752,509	Arkansas	\$29,456	Pennsylvania	\$122,499	Virginia	\$95	Kentucky	\$438
34	Maryland	\$551,126	Connecticut	\$29,329	Utah	\$120,202	South Carolina	\$91	Tennessee	\$414
35	Alabama	\$547,235	Maine	\$29,167	Alabama	\$119,464	Tennessee	\$74	Missouri	\$383
36	South Carolina	\$445,712	Montana	\$28,894	Vermont	\$118,062	Oregon	\$63	Kansas	\$376
37	New Jersey	\$387,450	Oregon	\$26,871	South Carolina	\$115,059	New Hampshire	\$62	Oregon	\$342
38	Wyoming	\$330,124	<b>Texas</b>	<b>\$21,812</b>	Hawaii	\$109,167	Alabama	\$61	Colorado	\$261
39	Utah	\$293,733	Utah	\$17,695	<b>Texas</b>	<b>\$106,637</b>	Arizona	\$61	South Dakota	\$248
40	Vermont	\$261,413	Kentucky	\$17,686	Missouri	\$103,888	North Dakota	\$55	West Virginia	\$220
41	Maine	\$236,250	Oklahoma	\$17,665	Maine	\$98,849	Colorado	\$53	Oklahoma	\$215
42	Hawaii	\$231,241	South Carolina	\$16,819	Virginia	\$91,370	Oklahoma	\$44	North Dakota	\$208
43	Nevada	\$223,635	Massachusetts	\$16,702	Oklahoma	\$87,274	<b>Texas</b>	<b>\$41</b>	<b>Texas</b>	<b>\$201</b>
44	Delaware	\$197,107	Virginia	\$16,218	Massachusetts	\$85,733	Nevada	\$38	Arizona	\$195
45	Connecticut	\$143,714	Alaska	\$12,920	Kentucky	\$71,824	New Mexico	\$31	Utah	\$180
46	Massachusetts	\$128,605	Alabama	\$11,521	Rhode Island	\$66,475	Utah	\$26	Nevada	\$138
47	West Virginia	\$32,009	Tennessee	\$10,337	Alaska	\$59,276	Montana	\$14	New Mexico	\$98
48	New Hampshire	\$29,273	Rhode Island	\$9,357	New Hampshire	\$59,051	Wyoming	\$11	Montana	\$69
49	Rhode Island	\$11,416	New Hampshire	\$7,054	Tennessee	\$57,792	Alaska	\$10	Wyoming	\$60
50	Alaska	\$8,786	West Virginia	\$1,423	West Virginia	\$35,740	West Virginia	\$9	Alaska	\$46
	UNITED STATES	\$117,907,650	UNITED STATES	\$54,061	UNITED STATES	\$191,679	UNITED STATES	\$129	UNITED STATES	\$456

1/ Value of agricultural sector production in the value-added accounting model (table).

2/ Synonymous with farming operation or farm

August 2012

Information contacts: Ted Covey, tcovey@ers.usda.gov

# State Ranking by Net Farm Income 2010, 2011 (Billion \$)

State	2010	State	2011
1. California	10.95	1. California	16.30
2. <i>Texas</i>	5.52	2. Iowa	10.81
3. Iowa	4.98	3. Nebraska	7.46
4. Minnesota	4.64	4. Illinois	6.10
5. Nebraska	3.99	5. Minnesota	5.78
6. Illinois	3.39	6. <i>Texas</i>	5.34

Note in 2009 Texas' net farm income was \$2.26 Billion

# Leading States in Value of Farm Real Estate, January 1, 2011

State	Million Dollars
1. <i>Texas</i>	<i>227,500</i>
2. California	175,260
3. Iowa	174,990
4. Illinois	151,620
5. Arizona	91,350
6. Minnesota	89,948
7. Nebraska	88,270
8. Indiana	77,910
9. Missouri	73,695
10. Wisconsin	60,750

As of August 28, 2012

<http://www.ers.usda.gov/data-products/farm-income-and-wealth-statistics.aspx#27395>

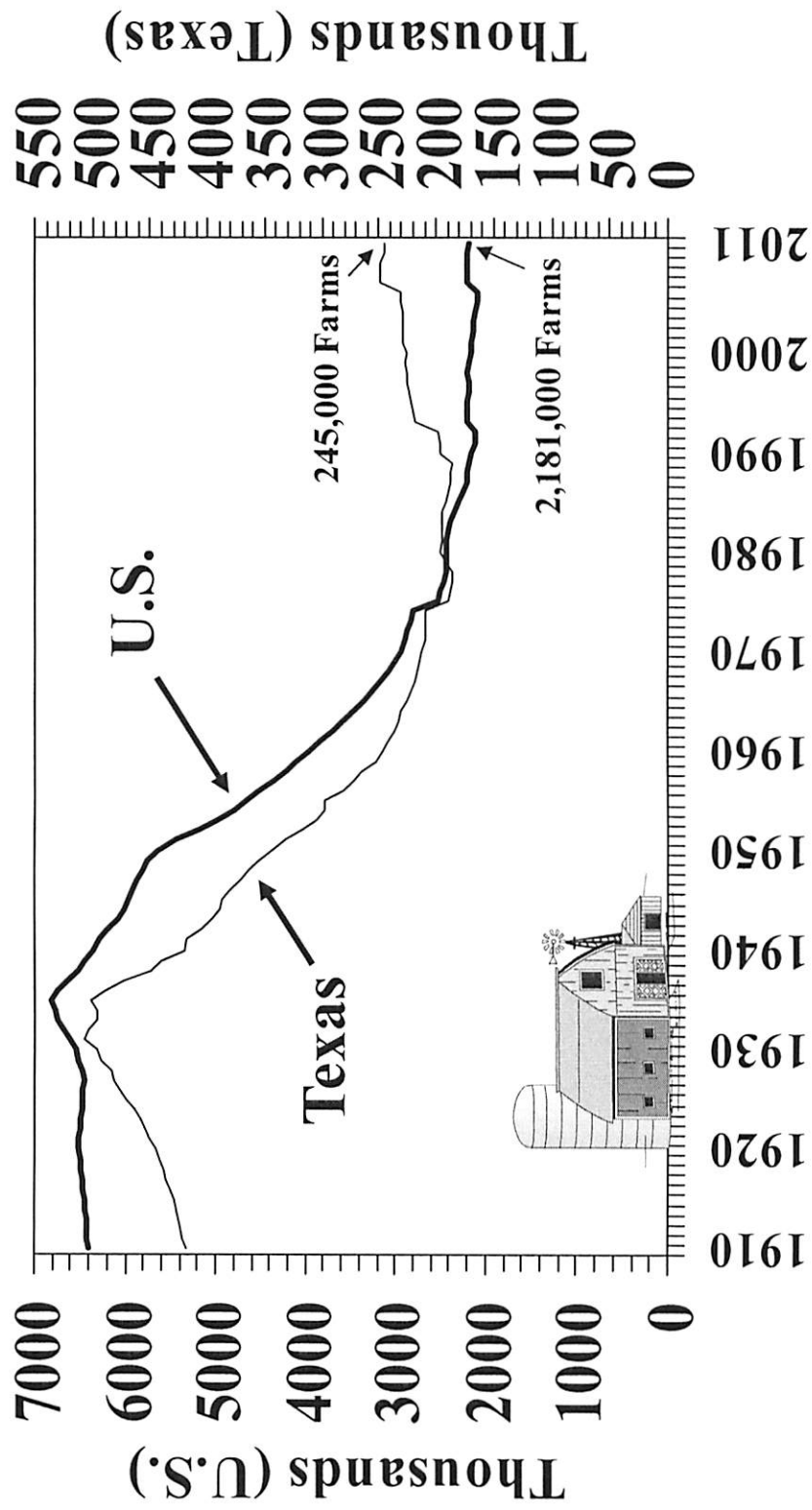
**Texas and United States Number of Farms, 1915 - 2011**  
(1,000)

Texas				U.S.			
Year	Farms	Year	Farms	Year	Farms	Year	Farms
1915	430	1965	226	1915	6,458	1965	3,356
1916	432	1966	222	1916	6,463	1966	3,257
1917	436	1967	219	1917	6,478	1967	3,162
1918	438	1968	216	1918	6,488	1968	3,071
1919	442	1969	214	1919	6,506	1969	3,000
1920	446	1970	212	1920	6,518	1970	2,949
1921	450	1971	210	1921	6,511	1971	2,902
1922	454	1972	209	1922	6,500	1972	2,860
1923	458	1973	209	1923	6,492	1973	2,823
1924	464	1974	209	1924	6,480	1974	2,795
1925	470	1975	189	1925	6,471	1975	2,521
1926	476	1976	187	1926	6,462	1976	2,497
1927	481	1977	186	1927	6,458	1977	2,456
1928	484	1978	185	1928	6,470	1978	2,436
1929	492	1979	192	1929	6,512	1979	2,437
1930	496	1980	196	1930	6,546	1980	2,440
1931	506	1981	195	1931	6,609	1981	2,440
1932	504	1982	194	1932	6,687	1982	2,407
1933	496	1983	194	1933	6,741	1983	2,379
1934	496	1984	194	1934	6,776	1984	2,334
1935	501	1985	192	1935	6,814	1985	2,293
1936	489	1986	190	1936	6,739	1986	2,250
1937	472	1987	188	1937	6,636	1987	2,213
1938	449	1988	187	1938	6,527	1988	2,197
1939	440	1989	186	1939	6,441	1989	2,171
1940	420	1990	196	1940	6,350	1990	2,146
1941	418	1991	197	1941	6,293	1991	2,117
1942	406	1992	198	1942	6,202	1992	2,108
1943	397	1993	218	1943	6,089	1993	2,202
1944	389	1994	220	1944	6,003	1994	2,198
1945	387	1995	222	1945	5,967	1995	2,196
1946	380	1996	224	1946	5,926	1996	2,191
1947	372	1997	225	1947	5,871	1997	2,191
1948	365	1998	226	1948	5,803	1998	2,192
1949	355	1999	227	1949	5,772	1999	2,187
1950	345	2000	226	1950	5,648	2000	2,167
1951	332	2001	229	1951	5,428	2001	2,149
1952	318	2002	229	1952	5,198	2002	2,135
1953	305	2003	229	1953	4,984	2003	2,127
1954	297	2004	229	1954	4,798	2004	2,113
1955	298	2005	230	1955	4,654	2005	2,099
1956	281	2006	230	1956	4,514	2006	2,089
1957	273	2007	248	1957	4,372	2007	2,205
1958	265	2008	248	1958	4,233	2008	2,200
1959	252	2009	248	1959	4,105	2009	2,200
1960	247	2010	246	1960	3,963	2010	2,192
1961	242	2011	245	1961	3,825	2011	2,181
1962	237			1962	3,692		
1963	233			1963	3,572		
1964	230			1964	3,457		

Source: TDA/USDA, "1966-1989 Texas Historical Crops Statistics", compiled by Texas Agricultural Statistics Service, August 1991, USDA; "Texas Ag Facts", USDA/TASS; "Farm Numbers and Land in Farms", USDA/NASS, various years.



# Texas and U.S. Number of Farms, 1910 - 2011



**Cotton: States' Ranking for Cash Receipts, 2011**

Rank	State	Value of receipts	Percent of total receipts	Cumulative percent 1/	Percent of State's total for all commodities	State's total for all commodities
		\$ thousand	-----	Percent	-----	\$ thousand
1	Texas	2,326,436	27.9	27.9	10	22,681,267
2	Georgia	1,184,413	14.2	42.1	14	8,354,359
3	California	933,840	11.2	53.3	2	43,544,001
4	Arkansas	638,326	7.7	61.0	8	8,415,896
5	Mississippi	514,703	6.2	67.1	10	5,358,070
6	North Carolina	467,341	5.6	72.7	4	10,543,175
7	Tennessee	401,123	4.8	77.5	12	3,500,806
8	Missouri	379,378	4.5	82.1	4	9,709,825
9	Arizona	371,544	4.5	86.5	9	4,313,909
10	Alabama	301,605	3.6	90.2	6	4,850,468
11	Louisiana	242,383	2.9	93.1	7	3,460,570
12	South Carolina	216,717	2.6	95.7	8	2,595,194
13	Oklahoma	94,615	1.1	96.8	1	7,056,313
14	Florida	83,225	1.0	97.8	1	8,262,486
15	Virginia	71,452	0.9	98.7	2	3,304,041
16	New Mexico	68,660	0.8	99.5	2	4,105,773
17	Kansas	43,679	0.5	100.0	0	15,858,516
	United States	8,339,439	--	--	2.2	374,251,708

-- = Not applicable.

Numbers may not add due to rounding.

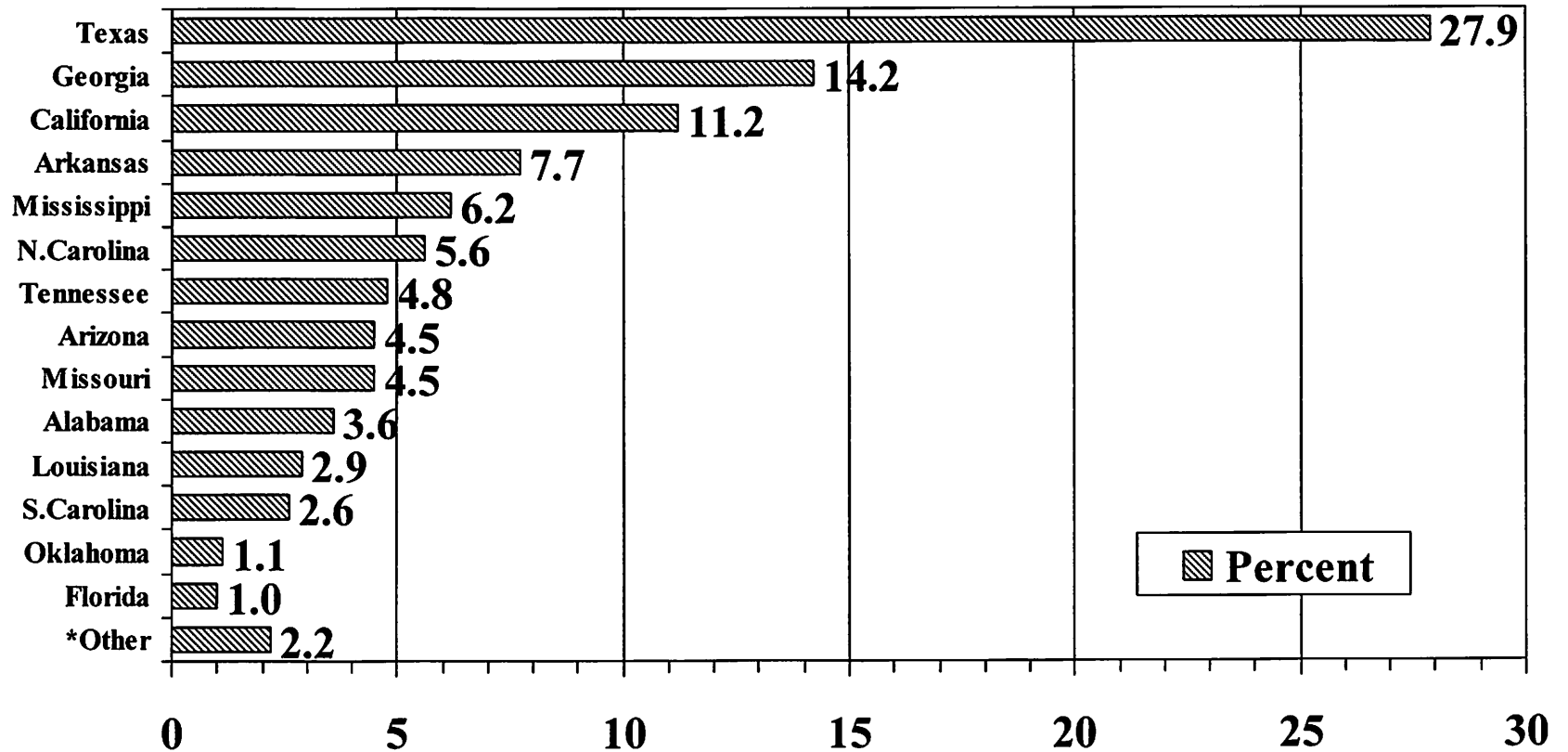
1/ The cumulative percentage is the sum of the percent of total receipts for each commodity and all preceding commodities.

August 28, 2012

Information contacts: Ted Covey  
tcovey@ers.usda.gov

Kevin Patrick  
kpatrick@ers.usda.gov

# Cotton: States' Percent of Total Receipts, 2011



\* Virginia, New Mexico, and Kansas