

U.S. LIVESTOCK



**The Farm Security Administration farmsteads, Holstein calves, Scottsbluff (vicinity),
Nebraska, September 1941**

**U.S. Marketing Year Average Prices Received by Farmers, Livestock and Livestock Products,
1961-2007**

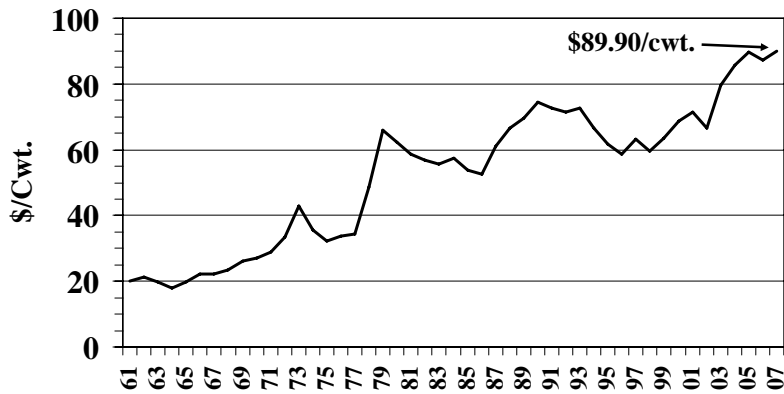
Year	Beef Cattle	Calves	Hogs	Sheep	Lambs	Commercial Broilers	Market Eggs	Milk (Wholesale)
			-----\$/cwt.-----			¢/lb.	¢/doz.	\$/cwt.
1961	20.20	23.70	16.60	5.17	15.80	13.90	35.60	4.22
1962	21.30	25.10	16.30	5.63	17.80	15.20	33.80	4.09
1963	19.90	24.00	14.90	5.76	18.10	14.60	34.50	4.10
1964	18.00	20.40	14.80	5.96	19.90	14.20	33.80	4.15
1965	19.90	22.10	20.60	6.34	22.80	15.00	33.70	4.23
1966	22.20	26.00	22.80	6.84	23.40	15.30	39.10	4.81
1967	22.30	26.30	18.90	6.35	22.10	13.30	31.20	5.02
1968	23.40	27.60	18.50	6.55	24.40	14.20	34.00	5.24
1969	26.20	31.50	22.20	8.24	27.20	15.20	40.00	5.49
1970	27.10	34.50	22.70	7.51	26.40	13.60	39.10	5.71
1971	29.00	36.40	17.50	6.59	25.90	13.70	31.40	5.87
1972	33.50	44.70	25.10	7.28	29.10	14.10	30.90	6.07
1973	42.80	56.60	38.40	12.70	35.10	24.00	52.50	7.14
1974	35.60	35.20	34.20	11.30	37.00	21.50	53.30	8.33
1975	32.20	27.20	46.10	11.30	42.10	26.30	52.50	8.75
1976	33.70	34.10	43.30	13.10	46.90	23.60	58.40	9.66
1977	34.40	36.90	39.40	13.50	51.30	23.60	55.60	9.72
1978	48.50	59.10	46.60	21.80	62.80	26.30	52.20	10.60
1979	66.10	88.70	41.80	26.30	66.70	26.00	58.30	12.02
1980	62.40	76.80	38.00	21.10	63.60	27.70	56.30	13.05
1981	58.60	64.00	43.90	21.20	54.90	28.50	63.10	13.77
1982	56.70	59.80	52.30	19.50	53.10	26.90	59.50	13.61
1983	55.50	61.70	46.80	15.70	53.90	28.60	61.10	13.58
1984	57.30	59.90	47.10	16.40	60.10	33.70	72.30	13.46
1985	53.70	62.10	44.00	23.90	67.70	30.10	57.20	12.76
1986	52.60	61.10	49.30	25.60	69.00	34.50	61.50	12.51
1987	61.10	78.50	51.20	29.50	77.60	28.70	54.70	12.54
1988	66.60	89.20	42.30	25.60	69.10	33.10	52.80	12.26
1989	69.50	90.80	42.50	24.40	66.10	36.60	68.90	13.56
1990	74.60	95.60	53.70	23.20	55.50	32.60	70.90	13.74
1991	72.70	98.00	49.10	19.70	52.20	30.80	67.80	12.27
1992	71.30	89.00	41.60	25.80	59.50	31.80	57.60	13.25
1993	72.60	91.20	45.20	28.60	64.40	34.00	63.40	12.94
1994	66.70	87.20	39.90	30.90	65.60	35.00	61.50	13.15
1995	61.80	73.10	40.50	28.00	78.20	34.40	62.50	12.93
1996	58.70	58.40	51.90	29.90	82.20	38.10	75.00	14.94
1997	63.10	78.90	52.90	37.90	90.30	37.70	70.30	13.53
1998	59.60	78.80	34.40	30.60	72.30	39.30	66.80	15.46
1999	63.40	87.70	30.30	31.10	74.50	37.10	62.10	14.38
2000	68.60	104.00	42.30	34.30	79.80	33.60	61.70	12.40
2001	71.30	106.00	44.40	34.60	66.90	39.30	62.20	15.04
2002	66.50	96.40	33.40	28.20	74.10	30.50	58.90	12.18
2003	79.70	102.00	37.20	34.90	94.40	34.60	73.20	12.55
2004	85.80	119.00	49.30	38.80	101.00	44.60	71.40	16.13
2005	89.70	135.00	50.20	45.10	110.00	43.60	54.00	15.19
2006	87.20	133.00	46.00	35.20	95.50	38.60	57.90	12.97
2007*	89.90	119.00	46.60	31.00	98.50	44.25	79.58	19.13

Source: USDA/NASS/Quick Stas Program; Annual "Agricultural Prices", various years

Broilers, Eggs, and Milk for 2007 averaged monthly (January-December), "Agricultural Prices" publication

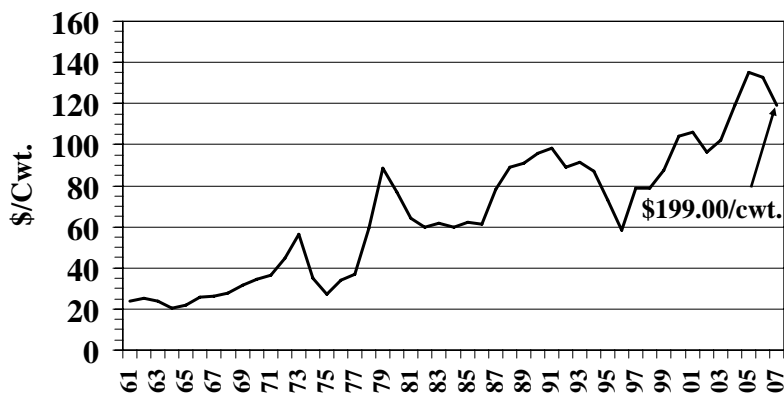
*Preliminary

U.S. Beef Cattle Prices Prices Received 1961 - 2007



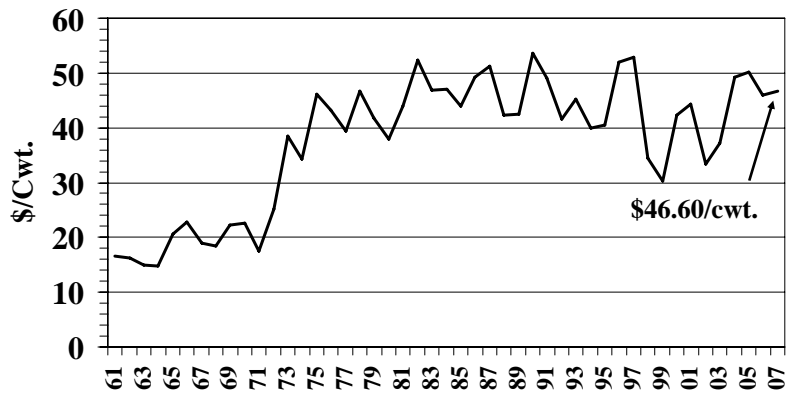
2007 Preliminary
Note: Prices Received by Farmers

U.S. Calf Prices Prices Received 1961 - 2007



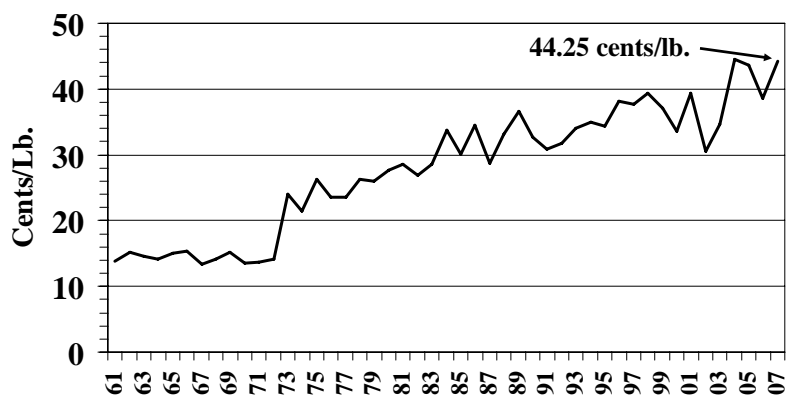
2007 Preliminary
Note: Prices Received by Farmers

U.S. Hog Prices Prices Received 1961 - 2007



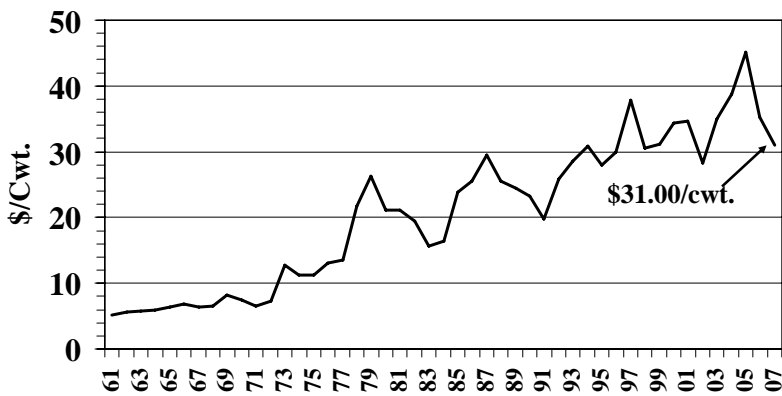
2007 Preliminary
Note: Prices Received by Farmers

U.S. Commercial Broiler Prices Prices Received 1961 - 2007



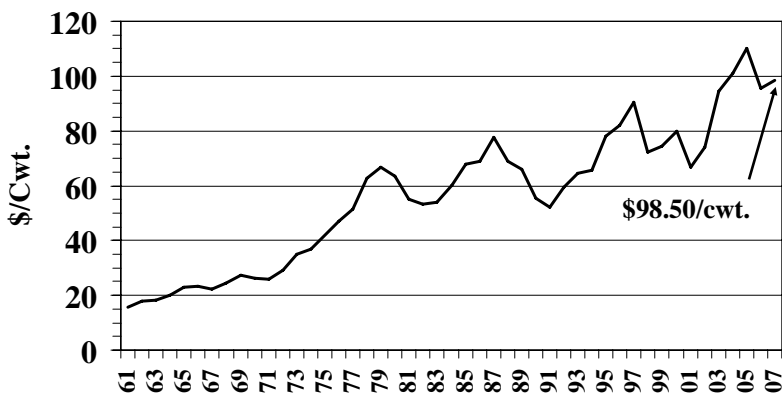
2007 preliminary
Note: Prices Received by Farmers

U.S. Sheep Prices Prices Received 1961 - 2007



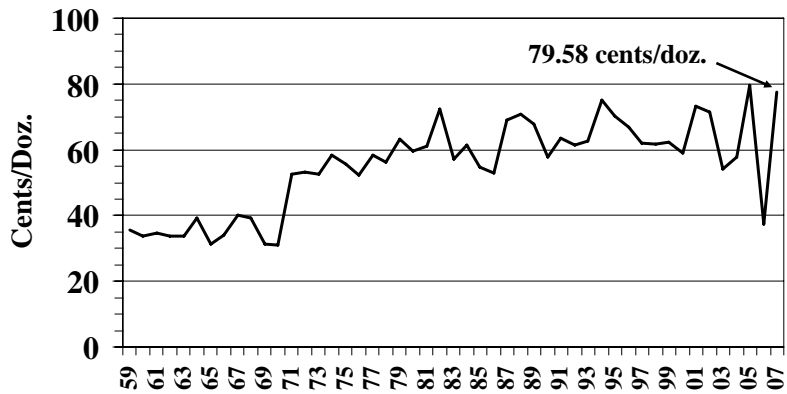
2007 Preliminary
Note: Prices Received by Farmers

U.S. Lamb Prices Prices Received 1961 - 2007



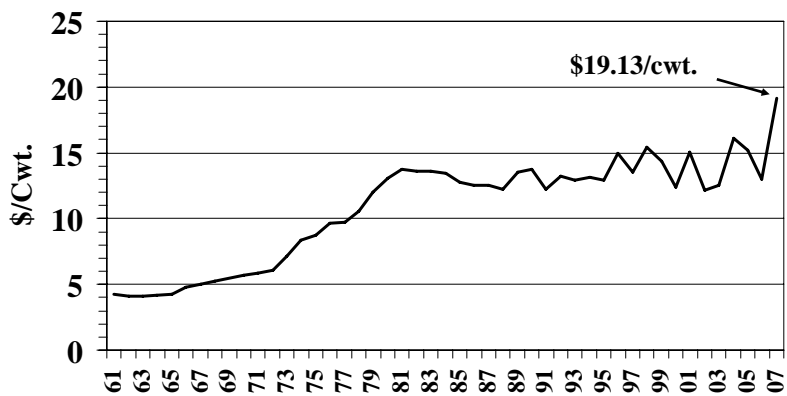
2007 Preliminary
Note: Prices Received by Farmers

U.S. Market Egg Prices Prices Received 1961 - 2007



2007 Preliminary
Note: Prices Received by Farmers

U.S. Milk (Wholesale) Prices Prices Received 1961 - 2007



2007 Preliminary
Note: Prices Received by Farmers

U.S. Livestock Numbers and Values

Class of Livestock	Number of Head				Farm Value					
					Value Per Head			Total Value		
	2006	2007	2008 Preliminary	2008 as % of 2007	2006	2007	2008	2006	2007	2008
	Thousands		Thousands	%	Dollars			1,000 Dollars		
All Cattle†	96,702	97,003	96,669	100	\$1,009	\$922	\$987	\$97,578,515	\$89,446,602	\$95,401,289
Beef Cows*† . . .	32,994	32,891	32,553	99	---	---	---	---	---	---
Milk Cows*† . . .	9,063	9,132	9,224	101	---	---	---	---	---	---
Hogs**	62,490	66,963	NA	NA	89	73	NA	5,585,812	4,916,591	NA
All Sheep†	6,230	6,165	6,055	98	141	134	138	875,410	823,846	836,092
Angora Goats† . .	260	238	210	88	75.90	78.50	74.80	17,604	16,319	13,423
Chickens**	454,422	454,902	NA	NA	2.61	2.95	NA	1,184,728	1,343,884	NA
Total Value	---	---	---	---	---	---	---	\$105,242,069	\$96,547,242	\$96,250,804

*Included in "All Cattle."

**Figures as of December 1. Turkey figures not released to avoid disclosing individual operations.

†Figures are as of January 1. Four states (Arizona, California, New Mexico, and Texas) make up U.S. price

1/ Texas is the only state that publishes all goats and kids value.

NA = Not Available.

Numbers may not add due to rounding.

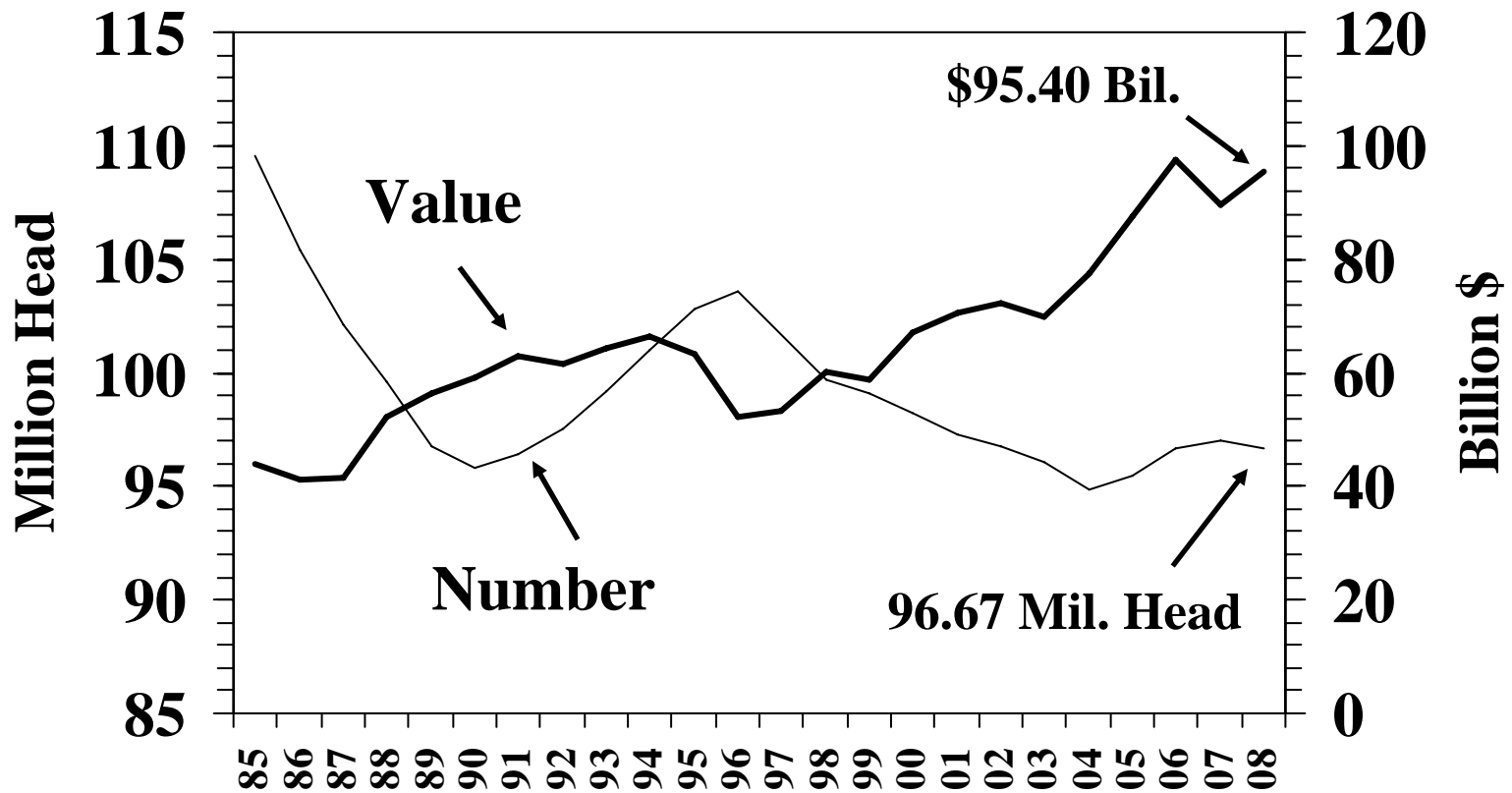
Source: "Texas Agricultural Facts", Texas Agricultural Statistical Service/USDA, January, February, March, and May 2008; "Texas Agricultural Statistics", December 2007, Texas Agricultural Statistical Service/USDA; "Agricultural Prices", February 2008; Meat Animals Production, Disposition, and Income, April 2008; NASS/USDA publications.

U.S. All Cattle Inventory and Value

Year	January 1 Inventory	Average Price Per Head	Value
	1,000 Head	Dollars	\$1,000
1985	109,582	402.00	44,006,068
1986	105,378	391.00	41,230,884
1987	102,118	407.00	41,567,085
1988	99,622	523.00	52,147,608
1989	96,740	581.00	56,210,694
1990	95,816	616.00	58,990,357
1991	96,393	655.00	63,090,155
1992	97,556	630.00	61,451,310
1993	99,176	649.00	64,436,369
1994	100,974	659.00	66,512,550
1995	102,785	615.00	63,185,288
1996	103,548	503.00	52,055,705
1997	101,656	525.00	53,383,392
1998	99,744	603.00	60,193,070
1999	99,115	594.00	58,833,650
2000	98,199	683.00	67,100,220
2001	97,298	725.00	70,510,630
2002	96,723	747.00	72,300,065
2003	96,100	728.00	69,952,520
2004	94,888	818.00	77,594,700
2005	95,438	916.00	87,385,945
2006	96,702	1009.00	97,578,515
2007	97,003	922.00	89,446,602
2008	96,669	987.00	95,401,289

Source: “Annual Ag Statistics”, “Meat Animals PDI” annual summary, USDA/NASS

U.S. All Cattle Number and Value 1985 - 2008



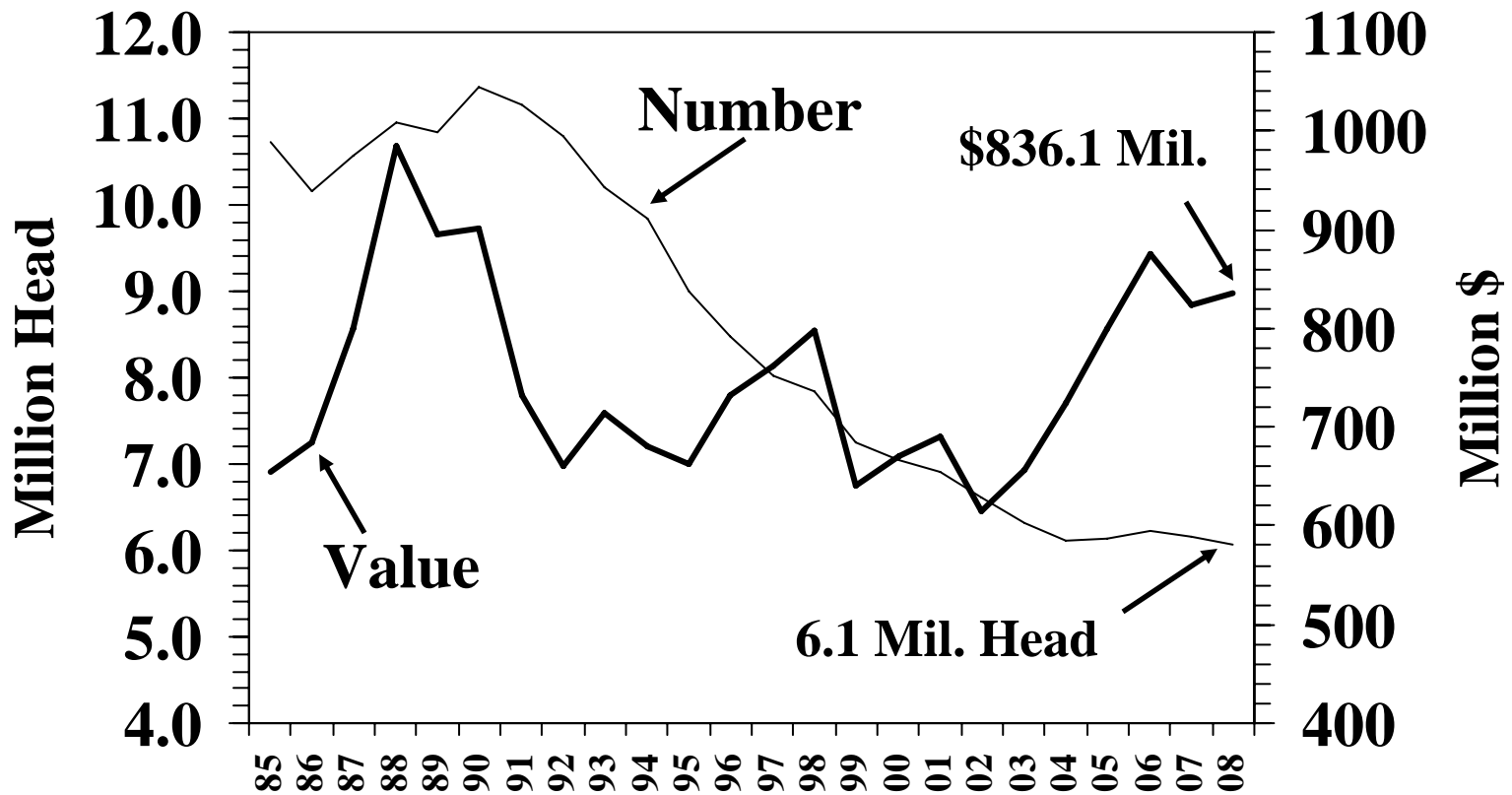
January 1 inventory

U.S. Sheep and Wool Production

Year	Sheep		Wool	
	Number 1,000 Head	Total Value 1,000 \$	Production 1,000 Lbs.	Value 1,000 \$
1985	10,716	654,079	88,055	55,732
1986	10,145	684,038	84,372	56,331
1987	10,572	799,254	84,450	77,009
1988	10,945	984,961	89,482	124,993
1989	10,853	894,410	89,220	110,537
1990	11,358	901,092	88,033	69,534
1991	11,174	732,600	87,740	47,178
1992	10,797	660,746	82,943	60,162
1993	10,201	714,163	77,535	39,077
1994	9,836	681,384	68,577	52,377
1995	8,989	663,449	63,513	64,277
1996	8,465	732,197	56,669	39,270
1997	8,024	761,650	53,578	44,909
1998	7,825	797,826	49,255	29,415
1999	7,247	640,819	46,572	17,860
2000	7,036	669,890	46,446	15,377
2001	6,908	690,489	43,016	15,311
2002	6,623	614,466	41,078	21,689
2003	6,321	656,638	38,299	28,126
2004	6,105	723,785	37,622	29,921
2005	6,135	799,288	37,232	26,272
2006	6,230	875,410	36,019	24,510
2007	6,165	823,846	34,533	30,258
2008	6,055	836,092	NA	NA

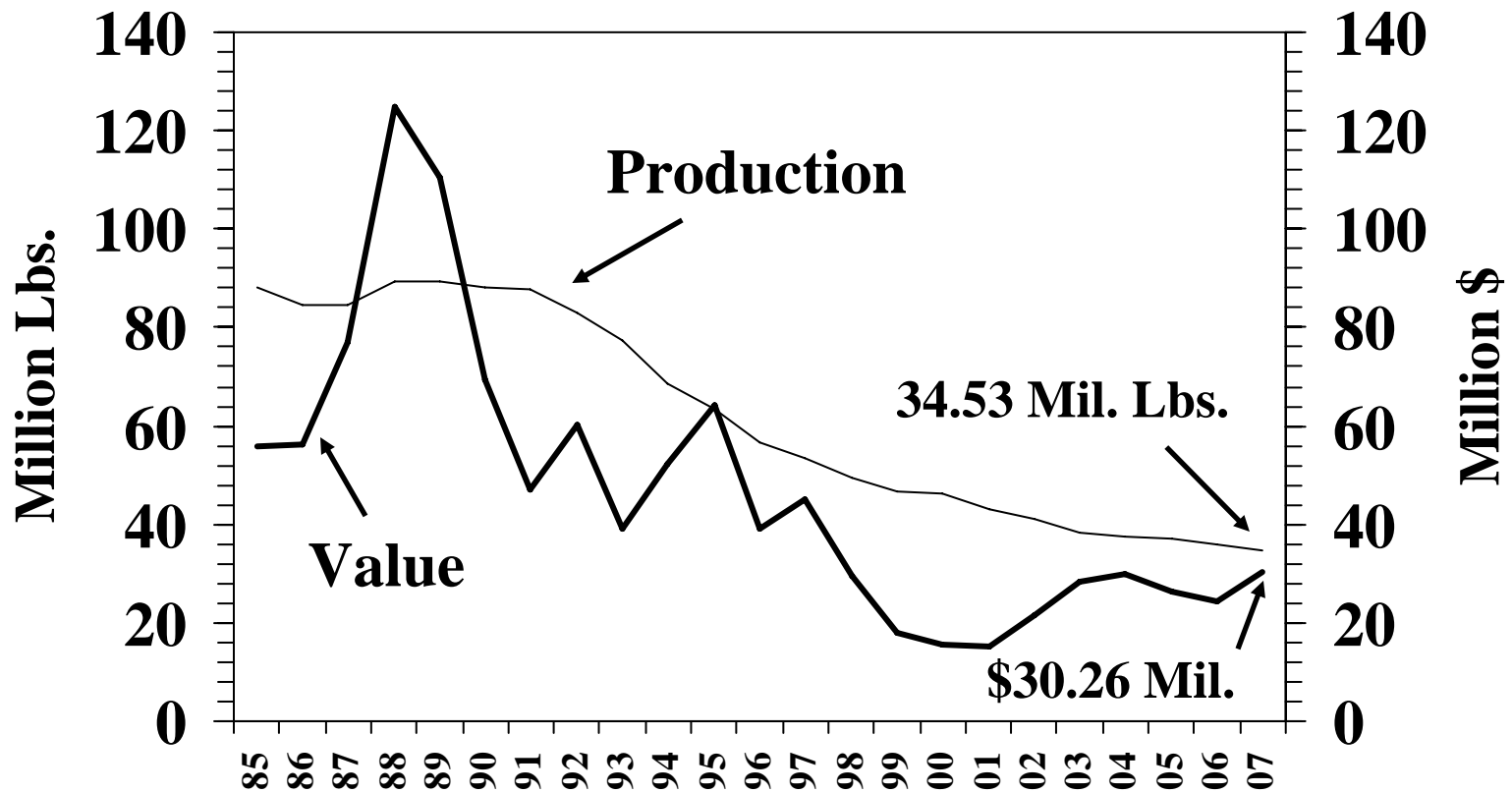
Source: "Annual Ag Statistics", "Meat Animals PDI" annual summary, USDA/NASS/TASS

U.S. Sheep Number and Total Value 1985 - 2008



January 1 inventory

U.S. Wool Production and Value 1985 - 2007



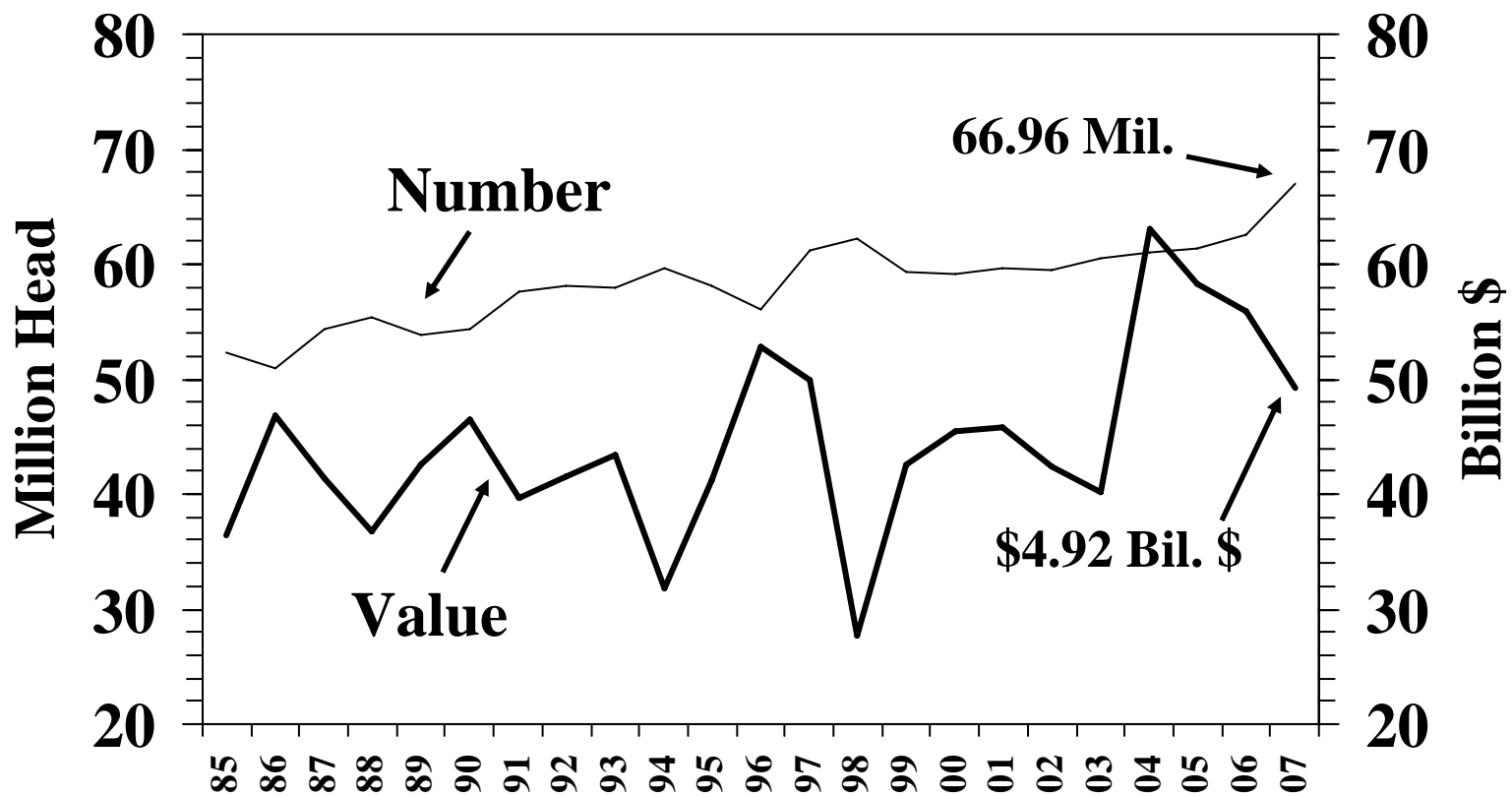
January 1 inventory

U.S. Hog Inventory and Value

Year	December 1 Inventory	Average Price Per Head	Value
	1,000 Head	Dollars	\$1,000
1985	52,314	69.60	3,640,420
1986	51,001	91.90	4,686,943
1987	54,384	76.00	4,132,872
1988	55,466	66.30	3,677,536
1989	53,788	79.10	4,252,885
1990	54,416	85.40	4,647,808
1991	57,649	68.80	3,966,276
1992	58,202	71.20	4,146,646
1993	57,940	75.00	4,339,509
1994	59,738	53.00	3,178,123
1995	58,201	71.00	4,115,118
1996	56,124	94.00	5,280,742
1997	61,158	82.00	4,985,532
1998	62,204	44.00	2,765,745
1999	59,335	72.00	4,253,785
2000	59,110	77.00	4,540,410
2001	59,722	77.00	4,584,078
2002	59,554	71.00	4,230,728
2003	60,444	67.00	4,024,949
2004	60,975	103.00	6,303,228
2005	61,449	95.00	5,824,928
2006	62,490	89.00	5,585,812
2007	66,963	73.00	4,916,591

Source: "Annual Ag Statistics", "Meat Animals PDS" annual summary, USDA/NASS/TASS

U.S. Hog Inventory and Value 1985 - 2007



December 1 Inventory