

U.S. LIVESTOCK



**The Farm Security Administration farmsteads, Holstein calves, Scottsbluff (vicinity),
Nebraska, September 1941**

**U.S. Marketing Year Average Prices Received by Farmers, Livestock and Livestock Products,
1961-2009**

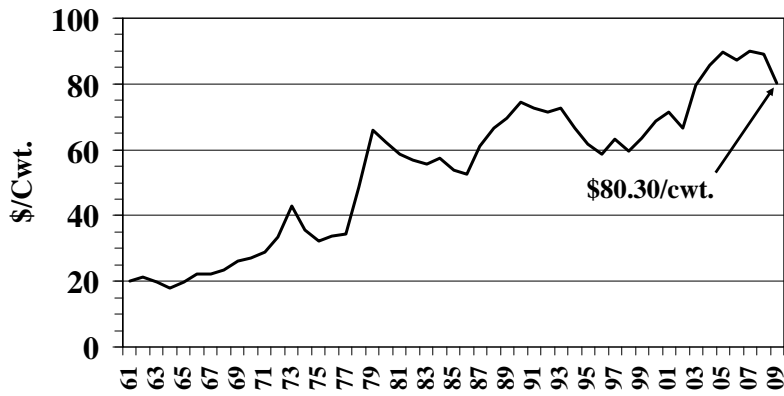
Year	Beef Cattle	Calves	Hogs	Sheep	Lambs	Commercial Broilers	Market Eggs	Milk (Wholesale)
			-----\$/cwt.-----			¢/lb.	¢/doz.	\$/cwt.
1961	20.20	23.70	16.60	5.17	15.80	13.90	35.60	4.22
1962	21.30	25.10	16.30	5.63	17.80	15.20	33.80	4.09
1963	19.90	24.00	14.90	5.76	18.10	14.60	34.50	4.10
1964	18.00	20.40	14.80	5.96	19.90	14.20	33.80	4.15
1965	19.90	22.10	20.60	6.34	22.80	15.00	33.70	4.23
1966	22.20	26.00	22.80	6.84	23.40	15.30	39.10	4.81
1967	22.30	26.30	18.90	6.35	22.10	13.30	31.20	5.02
1968	23.40	27.60	18.50	6.55	24.40	14.20	34.00	5.24
1969	26.20	31.50	22.20	8.24	27.20	15.20	40.00	5.49
1970	27.10	34.50	22.70	7.51	26.40	13.60	39.10	5.71
1971	29.00	36.40	17.50	6.59	25.90	13.70	31.40	5.87
1972	33.50	44.70	25.10	7.28	29.10	14.10	30.90	6.07
1973	42.80	56.60	38.40	12.70	35.10	24.00	52.50	7.14
1974	35.60	35.20	34.20	11.30	37.00	21.50	53.30	8.33
1975	32.20	27.20	46.10	11.30	42.10	26.30	52.50	8.75
1976	33.70	34.10	43.30	13.10	46.90	23.60	58.40	9.66
1977	34.40	36.90	39.40	13.50	51.30	23.60	55.60	9.72
1978	48.50	59.10	46.60	21.80	62.80	26.30	52.20	10.60
1979	66.10	88.70	41.80	26.30	66.70	26.00	58.30	12.02
1980	62.40	76.80	38.00	21.10	63.60	27.70	56.30	13.05
1981	58.60	64.00	43.90	21.20	54.90	28.50	63.10	13.77
1982	56.70	59.80	52.30	19.50	53.10	26.90	59.50	13.61
1983	55.50	61.70	46.80	15.70	53.90	28.60	61.10	13.58
1984	57.30	59.90	47.10	16.40	60.10	33.70	72.30	13.46
1985	53.70	62.10	44.00	23.90	67.70	30.10	57.20	12.76
1986	52.60	61.10	49.30	25.60	69.00	34.50	61.50	12.51
1987	61.10	78.50	51.20	29.50	77.60	28.70	54.70	12.54
1988	66.60	89.20	42.30	25.60	69.10	33.10	52.80	12.26
1989	69.50	90.80	42.50	24.40	66.10	36.60	68.90	13.56
1990	74.60	95.60	53.70	23.20	55.50	32.60	70.90	13.74
1991	72.70	98.00	49.10	19.70	52.20	30.80	67.80	12.27
1992	71.30	89.00	41.60	25.80	59.50	31.80	57.60	13.15
1993	72.60	91.20	45.20	28.60	64.40	34.00	63.40	12.84
1994	66.70	87.20	39.90	30.90	65.60	35.00	61.50	13.01
1995	61.80	73.10	40.50	28.00	78.20	34.40	62.50	12.78
1996	58.70	58.40	51.90	29.90	88.20	38.10	75.00	14.75
1997	63.10	78.90	52.90	37.90	90.30	37.70	70.30	13.36
1998	59.60	78.80	34.40	30.60	72.30	39.30	66.80	15.46
1999	63.40	87.70	30.30	31.10	74.50	37.10	62.10	14.38
2000	68.60	104.00	42.30	34.30	79.80	33.60	61.70	12.40
2001	71.30	106.00	44.40	34.60	66.90	39.30	62.20	15.04
2002	66.50	96.40	33.40	27.90	73.80	30.50	58.90	12.18
2003	79.70	102.00	37.20	34.90	94.40	34.60	57.60	12.55
2004	85.80	119.00	49.30	38.80	101.00	44.60	55.90	16.13
2005	89.70	135.00	50.20	45.10	110.00	43.60	34.80	15.19
2006	87.20	133.00	46.00	35.20	95.50	38.60	40.30	12.96
2007	89.90	119.00	46.60	31.00	98.50	43.60	74.60	19.21
2008	89.10	110.00	47.00	27.20	99.60	45.80	97.40	18.41
2009*	80.30	103.00	41.70	32.50	99.60	45.17	65.38	12.81

Source: USDA/NASS/Quick Stas Program; Annual "Agricultural Prices", various years

Broilers, Eggs, and Milk for 2009 averaged monthly (January-December), "Agricultural Prices" publication

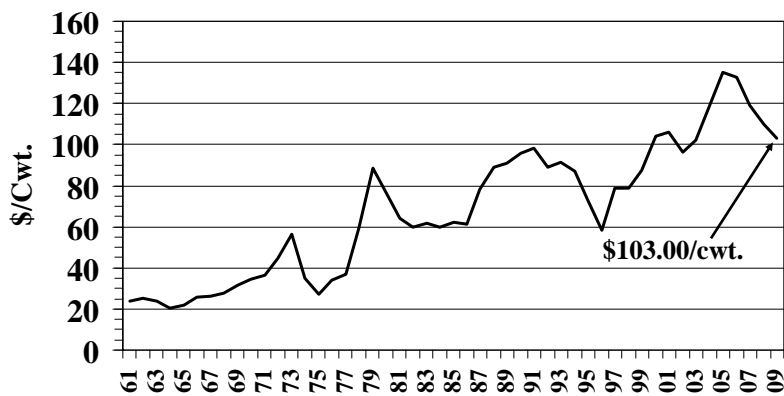
*Preliminary

U.S. Beef Cattle Prices Prices Received 1961 - 2009



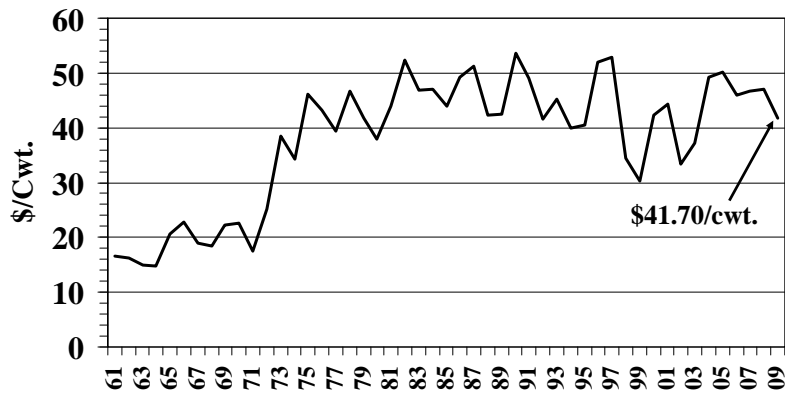
2009 Preliminary
Note: Prices Received by Farmers

U.S. Calf Prices Prices Received 1961 - 2009



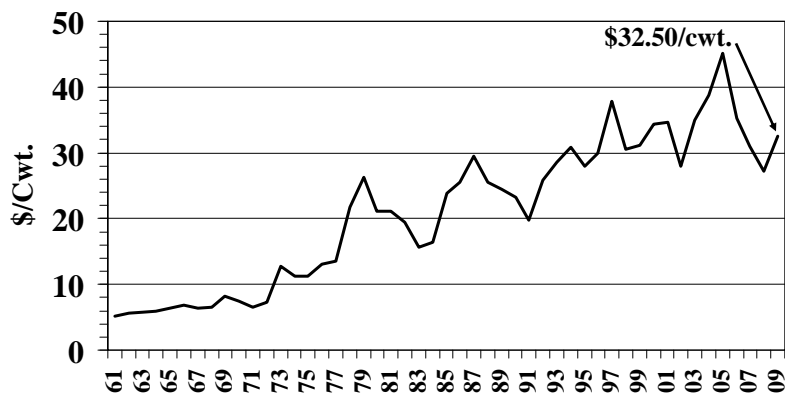
2009 Preliminary
Note: Prices Received by Farmers

U.S. Hog Prices Prices Received 1961 - 2009



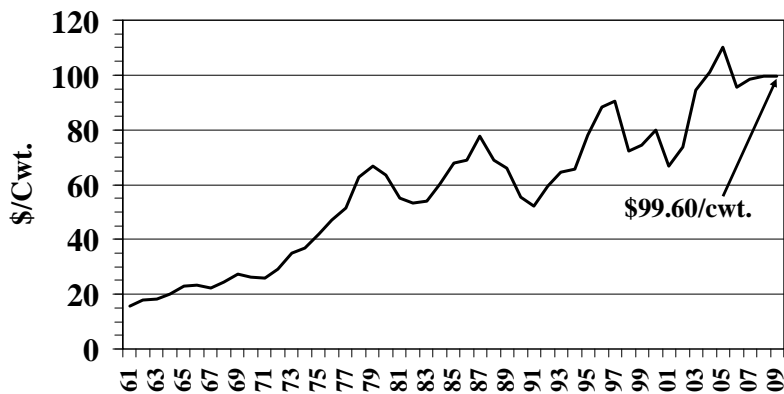
2009 Preliminary
Note: Prices Received by Farmers

U.S. Sheep Prices Prices Received 1961 - 2009



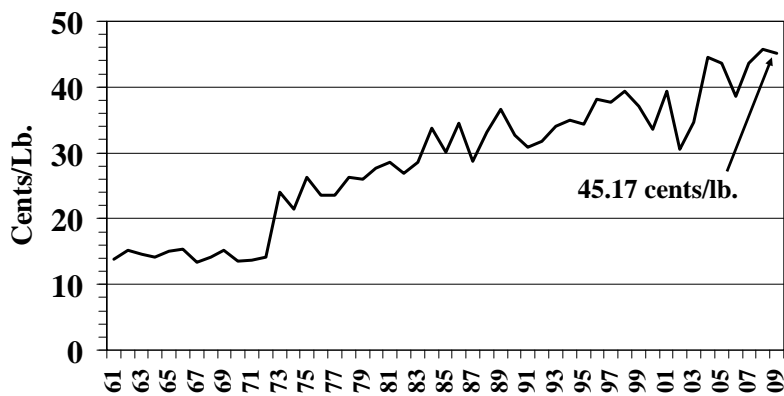
2009 Preliminary
Note: Prices Received by Farmers

U.S. Lamb Prices Prices Received 1961 - 2009



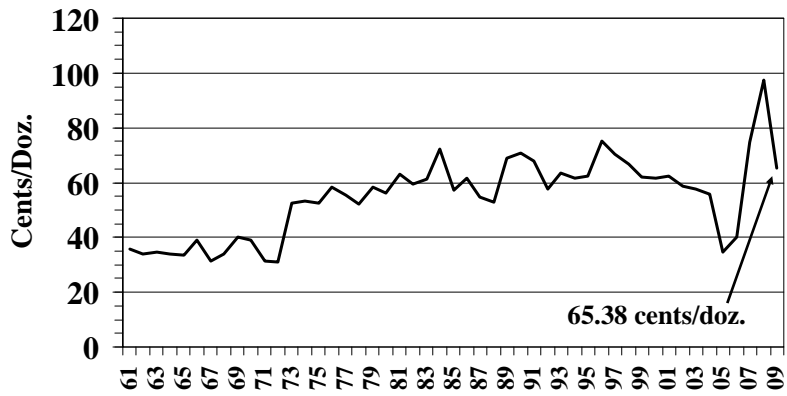
2009 Preliminary
Note: Prices Received by Farmers

U.S. Commercial Broiler Prices Prices Received 1961 - 2009



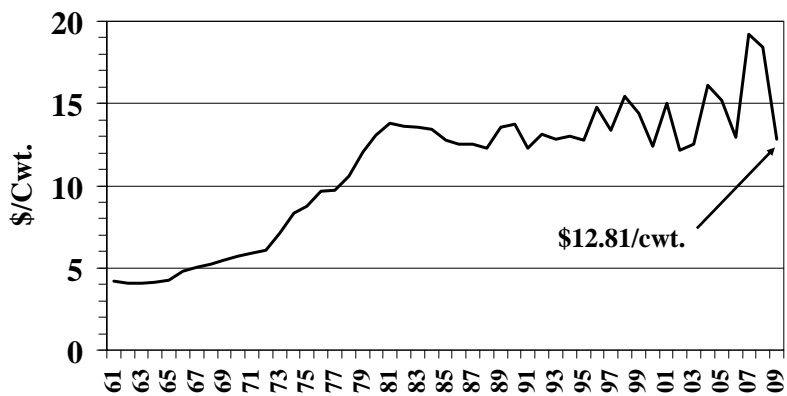
2009 preliminary
Note: Prices Received by Farmers

U.S. Market Egg Prices Prices Received 1961 - 2009



2009 Preliminary
Note: Prices Received by Farmers

U.S. Milk (Wholesale) Prices Prices Received 1961 - 2009



2009 Preliminary
Note: Prices Received by Farmers

U.S. Livestock Numbers and Values

Class of Livestock	Number of Head				Farm Value					
				2010 as % of 2009	Value Per Head			Total Value		
	2008	2009	2010 Preliminary		2008	2009	2010	2008	2009	2010
	Thousands		Thousands	%	Dollars			1,000 Dollars		
All Cattle†	96,035	94,521	93,701	99	\$990	\$872	\$829	\$95,112,820	\$82,435,620	\$77,677,310
Beef Cows*†	32,435	31,712	31,376	99	---	---	---	---	---	---
Milk Cows*†	9,257	9,333	9,081	97	---	---	---	---	---	---
Hogs**	67,148	65,327	NA	NA	89	83	NA	5,957,633	5,464,212	NA
All Sheep†	5,950	5,747	5,630	98	138	133	135	823,424	765,194	762,295
Angora Goats†	205	185	150	81	74.80	83	73	13,423	13,318	9,120
Chickens**	446,906	449,610	NA	NA	3.39	3.34	NA	1,517,210	1,501,605	NA
Total Value	---	---	---	---	---	---	---	\$103,424,292	\$90,179,949	\$78,448,725

*Included in "All Cattle."

**Figures as of December 1. Turkey figures not released to avoid disclosing individual operations.

†Figures are as of January 1. Four states (Arizona, California, New Mexico, and Texas) make up U.S. price

1/ Texas is the only state that publishes all goats and kids value.

NA = Not Available.

Numbers may not add due to rounding.

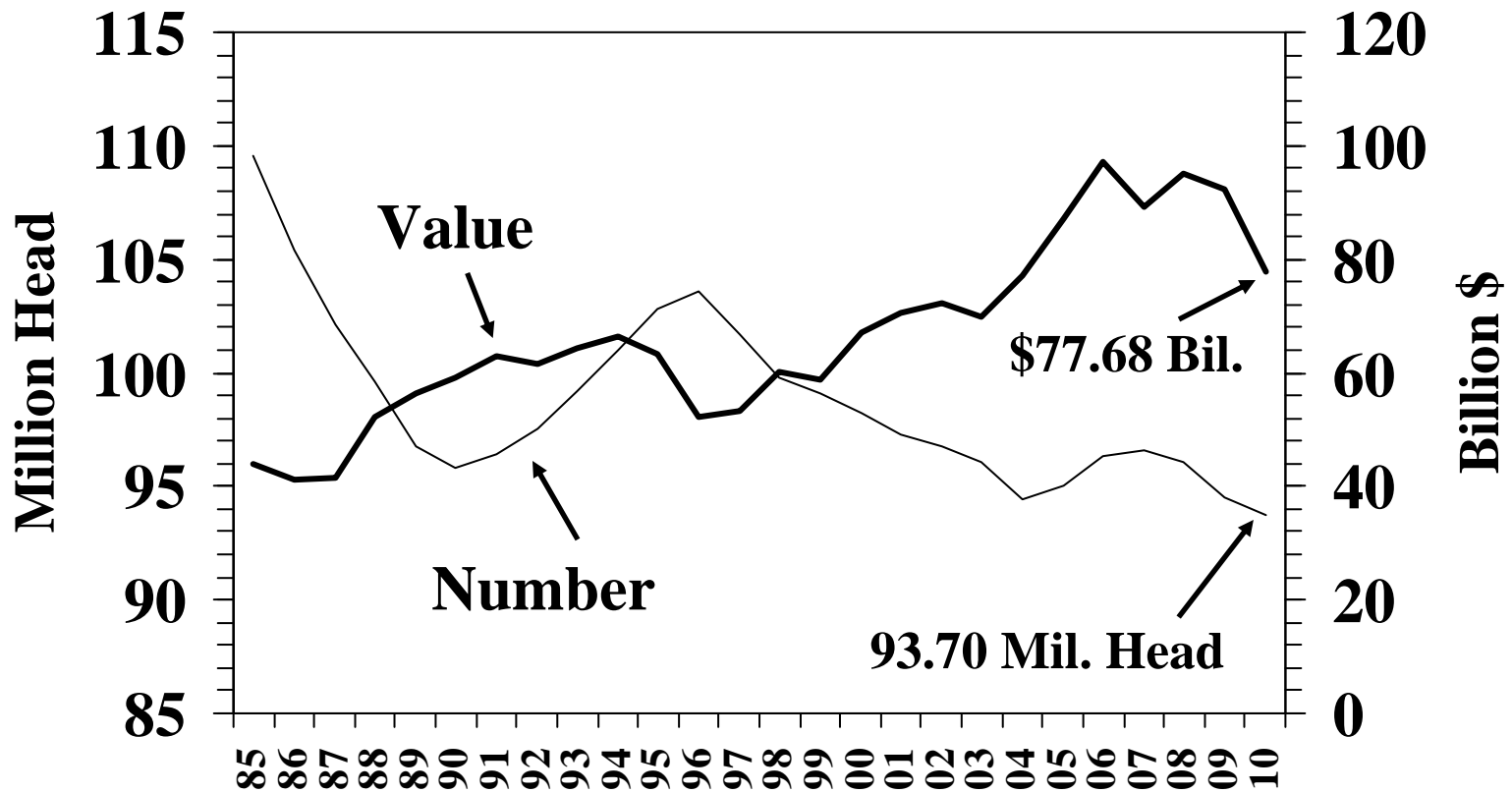
Source: "Texas Agricultural Facts", Texas Agricultural Statistical Service/USDA, January, February, March, and May 2010; "Texas Agricultural Statistics", December 2009, Texas Agricultural Statistical Service/USDA; "Agricultural Prices", February 2010; Meat Animals Production, Disposition, and Income, April 2010; NASS/USDA publications.

U.S. All Cattle Inventory and Value

Year	January 1 Inventory 1,000 Head	Average Price Per Head Dollars	Value \$1,000
1985	109,582	402.00	44,006,068
1986	105,378	391.00	41,230,884
1987	102,118	407.00	41,567,085
1988	99,622	523.00	52,147,608
1989	96,740	581.00	56,210,694
1990	95,816	616.00	58,990,357
1991	96,393	655.00	63,090,155
1992	97,556	630.00	61,451,310
1993	99,176	649.00	64,436,369
1994	100,974	659.00	66,512,550
1995	102,785	615.00	63,185,288
1996	103,548	503.00	52,055,705
1997	101,656	525.00	53,383,392
1998	99,744	603.00	60,193,070
1999	99,115	594.00	58,833,650
2000	98,199	683.00	67,100,220
2001	97,298	725.00	70,510,630
2002	96,723	747.00	72,300,065
2003	96,100	728.00	69,952,520
2004	94,403	818.00	77,201,950
2005	95,018	916.00	87,023,945
2006	96,342	1009.00	97,230,415
2007	96,573	922.00	89,063,310
2008	96,035	990.00	95,112,820
2009	94,521	872.00	82,435,620
2010	93,701	829.00	77,677,310

Source: USDA/NASS

U.S. All Cattle Number and Value 1985 - 2010



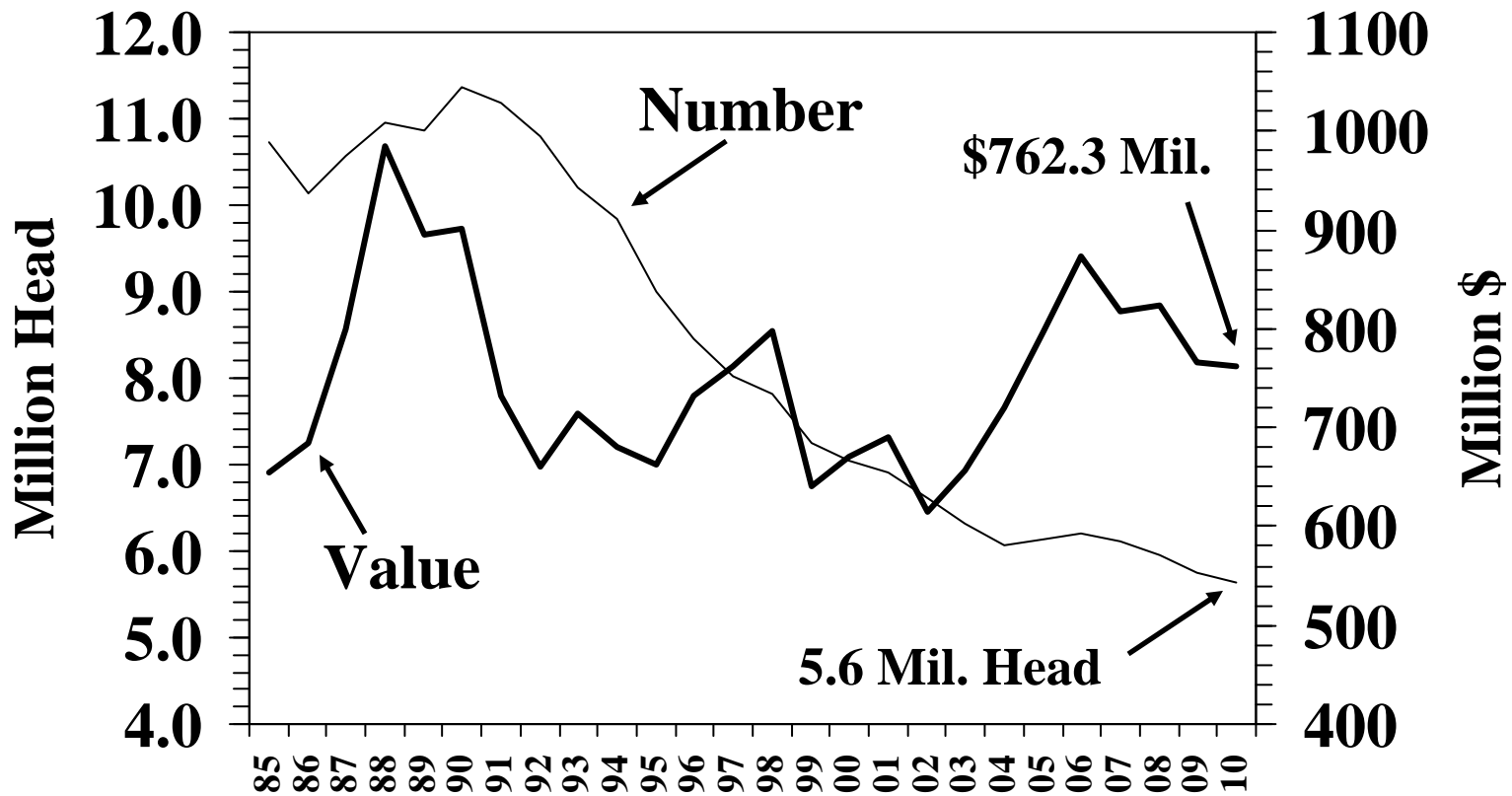
January 1 inventory

U.S. Sheep and Wool Inventory and Value

Year	Sheep		Wool	
	Number 1,000 Head	Total Value 1,000 \$	Production 1,000 Lbs.	Value 1,000 \$
1985	10,716	654,079	88,055	55,732
1986	10,145	684,038	84,372	56,331
1987	10,572	799,254	84,450	77,009
1988	10,945	984,961	89,482	124,993
1989	10,853	894,410	89,220	110,537
1990	11,358	901,092	88,033	69,534
1991	11,174	732,600	87,740	47,178
1992	10,797	660,746	82,943	60,162
1993	10,201	714,163	77,535	39,077
1994	9,836	681,384	68,577	52,377
1995	8,989	663,449	63,513	64,277
1996	8,465	732,197	56,669	39,270
1997	8,024	761,650	53,578	44,909
1998	7,825	797,826	49,255	29,415
1999	7,247	640,819	46,572	17,860
2000	7,036	669,890	46,446	15,377
2001	6,908	690,489	43,016	15,311
2002	6,623	614,466	41,078	21,689
2003	6,321	656,638	38,197	28,129
2004	6,065	720,443	37,581	29,954
2005	6,135	798,209	37,182	26,249
2006	6,200	872,351	35,899	24,300
2007	6,120	818,491	34,723	30,242
2008	5,950	823,424	32,963	32,486
2009	5,747	765,194	30,862	24,387
2010	5,630	762,295	NA	NA

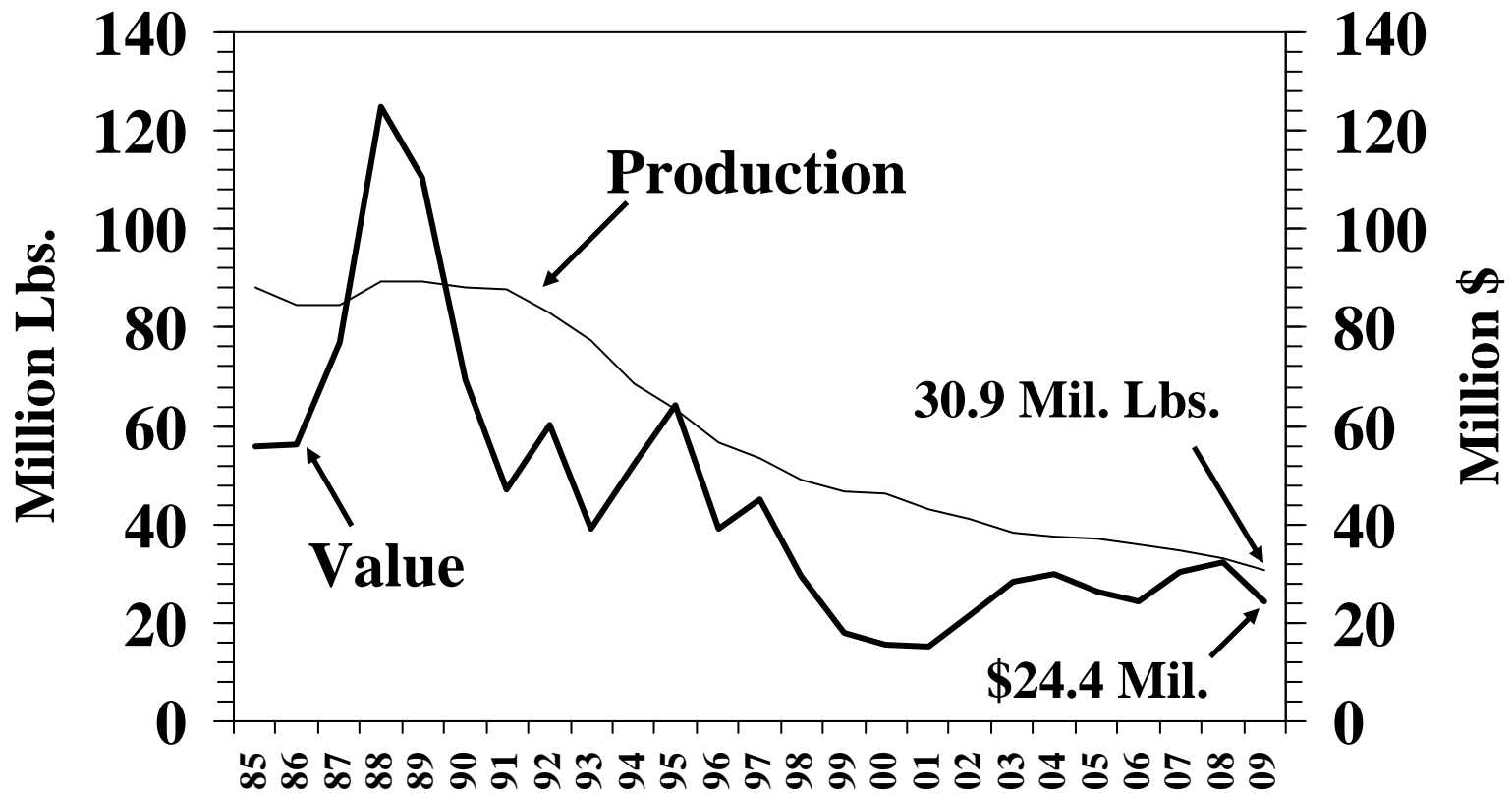
Source: USDA/NASS

U.S. Sheep Number and Total Value 1985 - 2010



January 1 inventory

U.S. Wool Production and Value 1985 - 2009



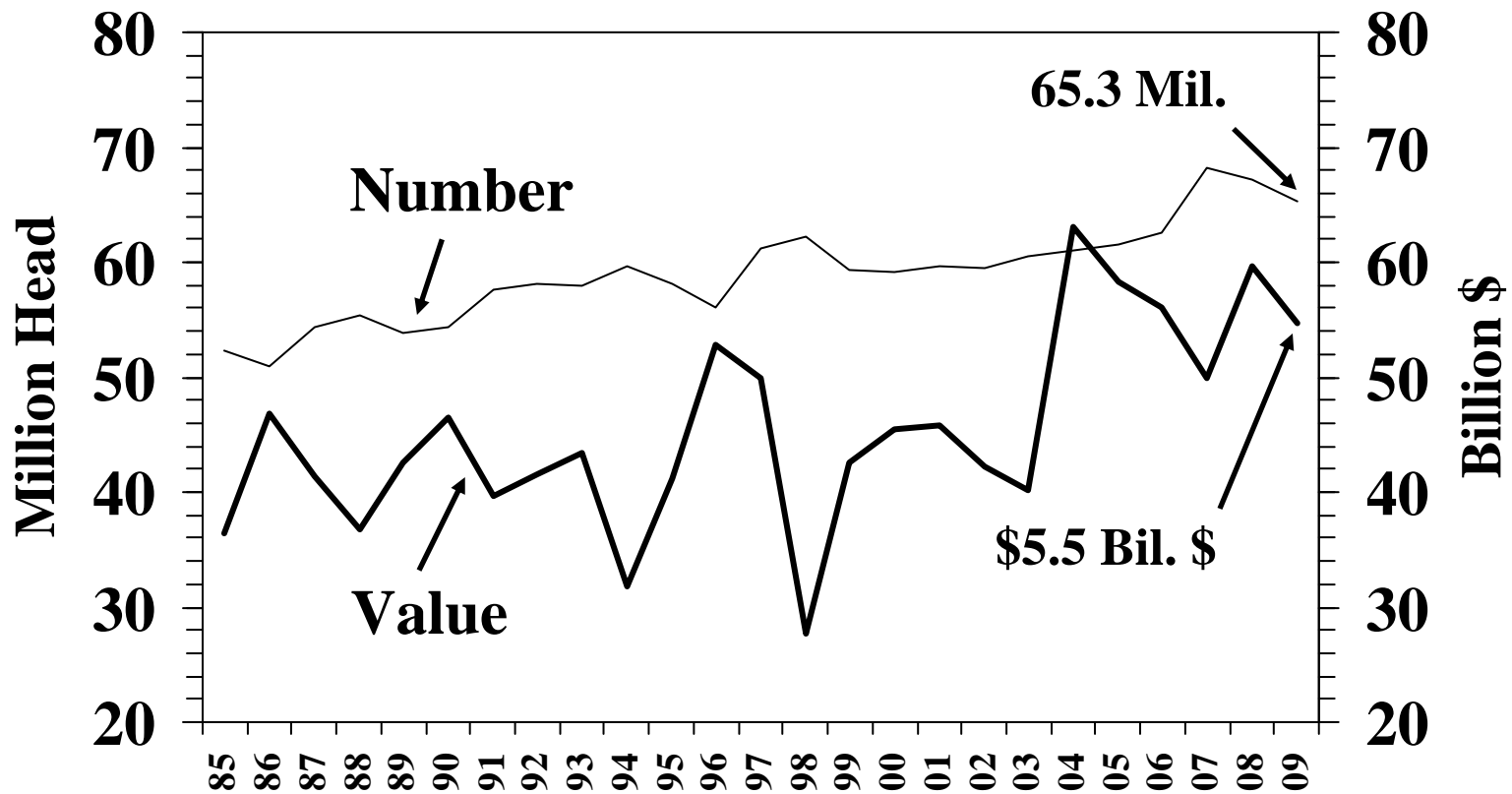
January 1 inventory

U.S. Hog Inventory and Value

Year	December 1 Inventory 1,000 Head	Average Price Per Head Dollars	Value \$1,000
1985	52,314	69.60	3,640,420
1986	51,001	91.90	4,686,943
1987	54,384	76.00	4,132,872
1988	55,466	66.30	3,677,536
1989	53,788	79.10	4,252,885
1990	54,416	85.40	4,647,808
1991	57,649	68.80	3,966,276
1992	58,202	71.20	4,146,646
1993	57,940	75.00	4,339,509
1994	59,738	53.00	3,178,123
1995	58,201	71.00	4,115,118
1996	56,124	94.00	5,280,742
1997	61,158	82.00	4,985,532
1998	62,204	44.00	2,765,745
1999	59,335	72.00	4,253,785
2000	59,110	77.00	4,540,410
2001	59,722	77.00	4,584,078
2002	59,554	71.00	4,230,728
2003	60,453	67.00	4,024,949
2004	60,982	103.00	6,306,282
2005	61,463	95.00	5,833,763
2006	62,516	90.00	5,598,613
2007	68,177	73.00	4,986,206
2008	67,148	89.00	5,957,633
2009	65,327	83.00	5,464,212

Source: USDA/NASS

U.S. Hog Inventory and Value 1985 - 2009



December 1 Inventory