

U.S. CROPS



Mechanical corn-picker in Grundy County, Iowa, October 1939

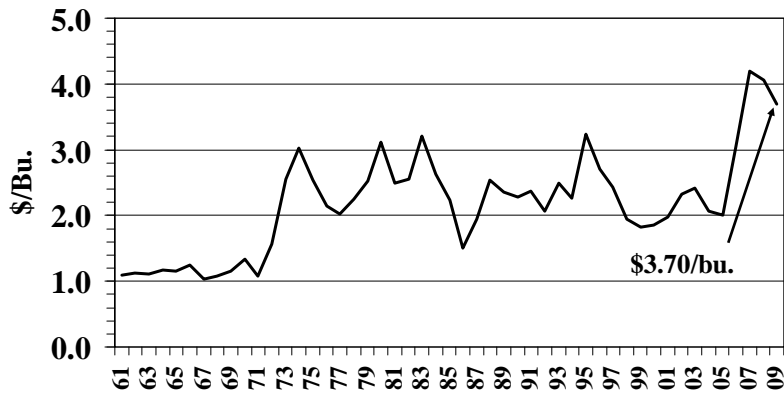
U.S. Marketing Year Average Prices Received by Farmers, Crops, 1961-2009

Year	Corn for Grain	Upland Cotton	All Hay	Oats	Peanuts	Rice	Grain Sorghum	Wheat
	\$/bu.	¢/lb.	\$/ton	\$/bu.	¢/lb.	\$/cwt.	\$/cwt.	\$/bu.
1961	1.10	32.80	20.70	0.64	10.90	5.14	1.80	1.83
1962	1.12	31.70	21.80	0.62	11.00	5.04	1.82	2.04
1963	1.11	32.00	24.60	0.62	11.20	5.01	1.74	1.85
1964	1.17	30.90	23.90	0.63	11.20	4.90	1.88	1.37
1965	1.16	29.30	23.20	0.62	11.40	4.93	1.76	1.35
1966	1.24	21.50	25.00	0.67	11.30	4.95	1.82	1.63
1967	1.03	26.50	24.50	0.66	11.40	4.97	1.77	1.39
1968	1.08	23.00	23.60	0.60	11.90	5.00	1.69	1.24
1969	1.16	21.90	24.70	0.58	12.30	4.95	1.91	1.25
1970	1.33	21.90	26.10	0.62	12.80	5.17	2.04	1.33
1971	1.08	28.10	28.10	0.60	13.60	5.34	1.86	1.34
1972	1.57	27.20	31.30	0.72	14.50	6.73	2.45	1.76
1973	2.55	44.40	41.60	1.18	16.20	13.80	3.82	3.95
1974	3.02	42.70	50.90	1.53	17.90	11.20	4.95	4.09
1975	2.54	51.10	52.10	1.45	19.60	8.35	4.21	3.55
1976	2.15	63.80	60.20	1.56	20.00	7.02	3.63	2.73
1977	2.02	52.10	53.70	1.09	21.00	9.49	3.25	2.33
1978	2.25	58.10	49.80	1.20	21.10	8.16	3.59	2.97
1979	2.52	62.30	59.40	1.33	20.60	10.50	4.19	3.80
1980	3.11	74.40	71.00	1.72	25.10	12.80	5.19	3.99
1981	2.50	54.00	67.30	1.88	26.90	9.05	4.01	3.69
1982	2.55	59.50	69.30	1.49	25.00	7.91	4.41	3.45
1983	3.21	65.30	75.80	1.62	24.60	8.57	4.89	3.51
1984	2.63	58.70	74.00	1.67	27.90	8.04	4.15	3.39
1985	2.23	56.80	67.60	1.23	24.40	6.53	3.45	3.08
1986	1.50	51.50	59.80	1.21	29.20	3.75	2.45	2.42
1987	1.94	63.70	65.00	1.56	28.00	7.27	3.04	2.57
1988	2.54	55.60	85.20	2.61	28.00	6.83	4.05	3.72
1989	2.36	63.60	85.40	1.49	28.00	7.35	3.75	3.72
1990	2.28	67.10	80.60	1.14	34.70	6.70	3.79	2.61
1991	2.37	56.80	71.20	1.21	28.30	7.58	4.01	3.00
1992	2.07	53.70	74.30	1.32	30.00	5.89	3.38	3.24
1993	2.50	58.10	84.70	1.36	30.40	7.98	4.13	3.26
1994	2.26	72.00	86.70	1.22	28.90	6.78	3.80	3.45
1995	3.24	75.40	82.20	1.67	29.30	9.15	5.69	4.55
1996	2.71	69.30	95.80	1.96	28.10	9.96	4.17	4.30
1997	2.43	65.20	100.00	1.60	28.30	9.70	3.95	3.38
1998	1.94	60.20	84.60	1.10	28.40	8.89	2.97	2.65
1999	1.82	45.00	76.90	1.12	25.40	5.93	2.80	2.48
2000	1.85	49.80	84.60	1.10	27.40	5.61	3.37	2.62
2001	1.97	29.80	96.50	1.59	23.40	4.25	3.46	2.78
2002	2.32	44.50	92.40	1.81	18.20	4.49	4.14	3.56
2003	2.42	61.80	85.50	1.48	19.30	8.08	4.26	3.40
2004	2.06	41.60	92.00	1.48	18.90	7.33	3.19	3.40
2005	2.00	47.70	98.20	1.63	17.30	7.65	3.33	3.42
2006	3.04	46.50	110.00	1.87	17.70	9.96	5.88	4.26
2007	4.20	59.30	127.00	2.63	20.50	12.80	7.28	6.48
2008	4.06	47.80	152.00	3.15	23.00	16.80	5.72	6.78
2009*	3.70	60.50	111.00	2.10	23.00	14.30	5.90	4.85

Source: USDA/NASS/Quick Stas Program.

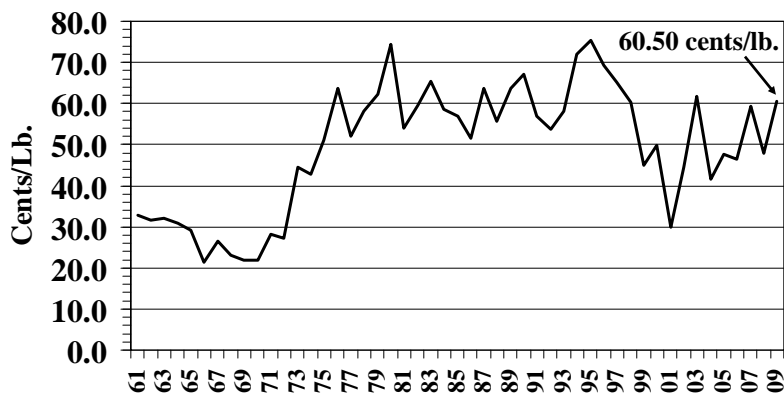
*Preliminary

U.S. Corn for Grain Prices Prices Received 1961 - 2009



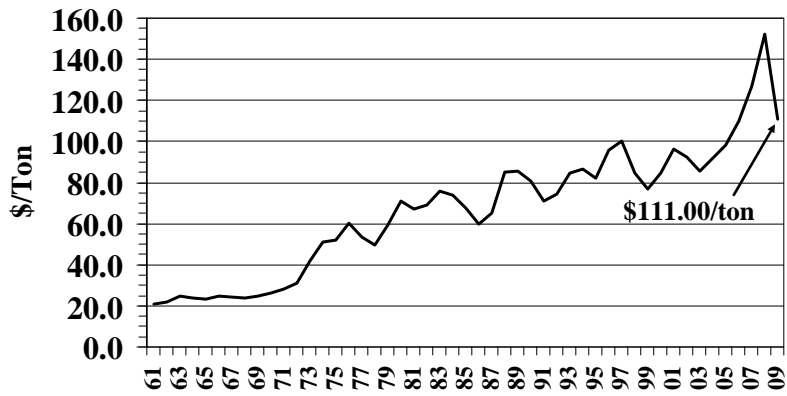
2009 Preliminary
Note: Prices Received by Farmers

U.S. Upland Cotton Prices Prices Received 1961 - 2009



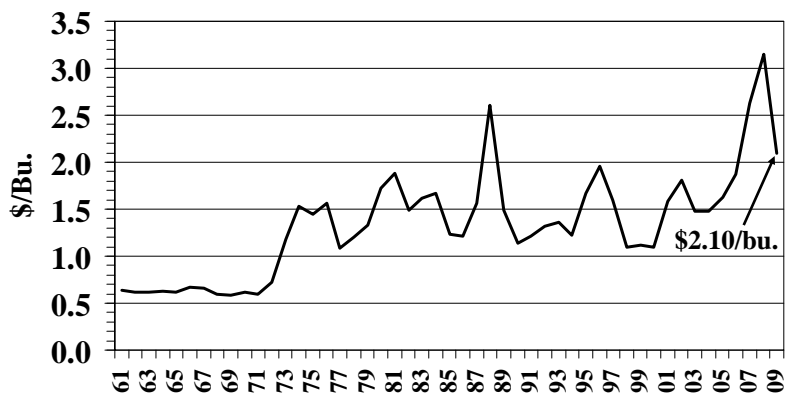
2009 Preliminary
Note: Prices Received by Farmers

U.S. All Hay Prices Prices Received 1961 - 2009



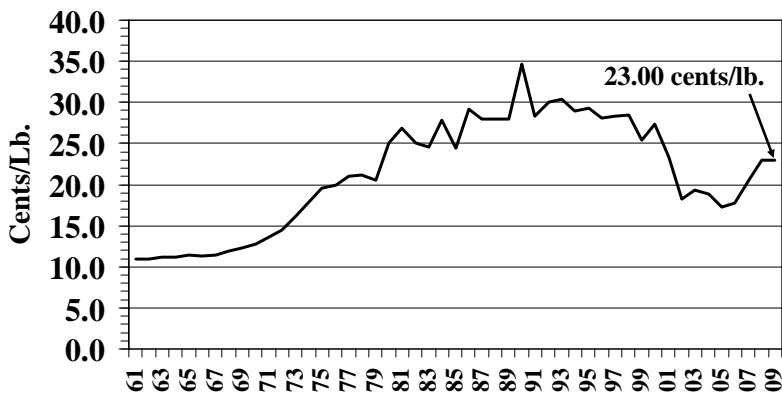
2009 Preliminary
Note: Prices Received by Farmers

U.S. Oat Prices Prices Received 1961 - 2009



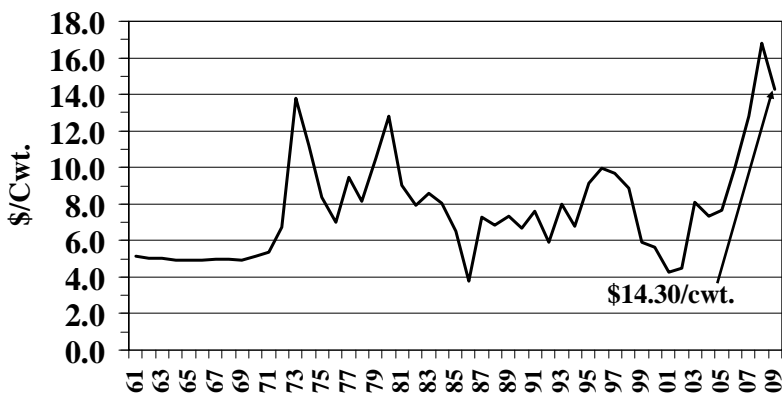
2009 Preliminary
Note: Prices Received by Farmers

U.S. Peanut Prices Prices Received 1961 - 2009



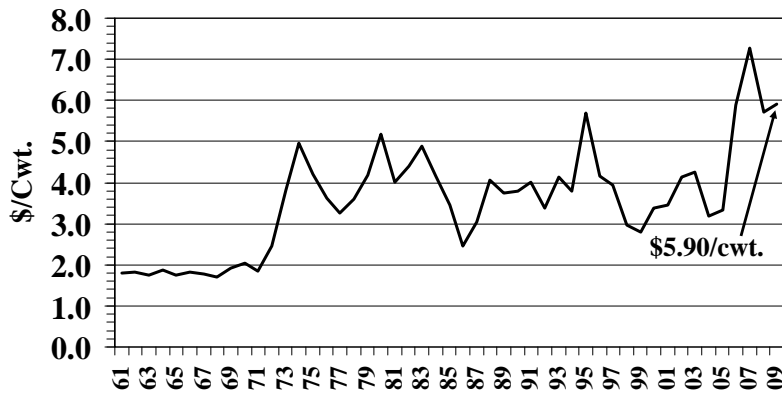
2009 Preliminary
Note: Prices Received by Farmers

U.S. Rice Prices Prices Received 1961 - 2009



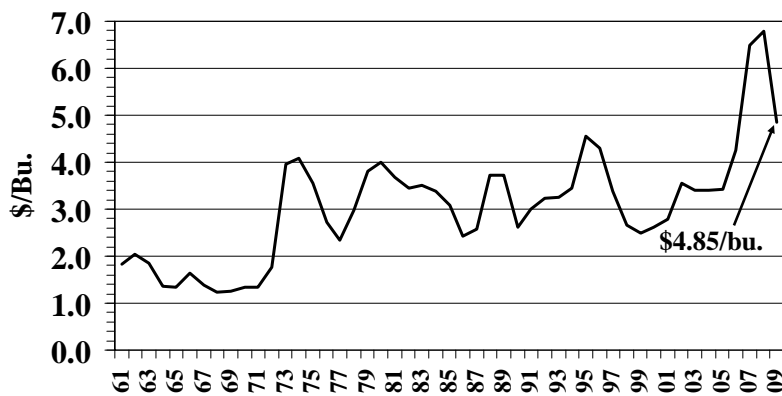
2009 Preliminary
Note: Prices Received by Farmers

U.S. Grain Sorghum Prices Prices Received 1961 - 2009



2009 Preliminary
Note: Prices Received by Farmers

U.S. Wheat Prices Prices Received 1961 - 2009



2009 Preliminary
Note: Prices Received by Farmers