

# *TEXAS CROPS*



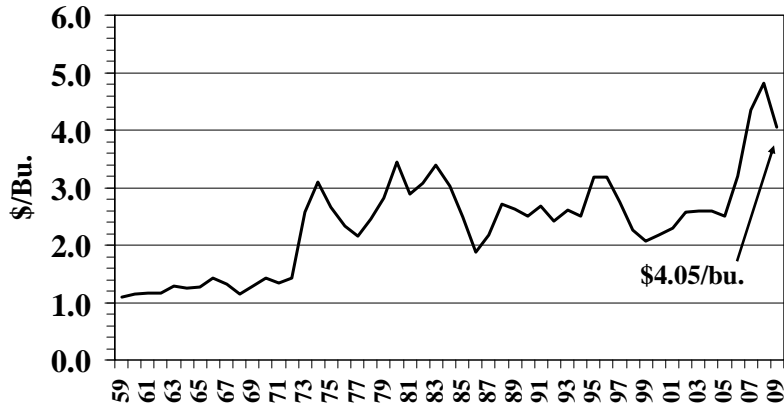
**Front of a general store in a small cotton town in Texas, June 1937**

**Texas Marketing Year Average Prices Received by Farmers, Crops, 1961 - 2009**

Year	Corn for Grain	Upland Cotton	All Hay	Oats	Peanuts	Rice	Grain Sorghum	Wheat
	\$/bu.	¢/lb.	\$/ton	\$/bu.	¢/lb.	\$/cwt.	\$/cwt.	\$/bu.
1961	1.16	29.80	22.10	0.69	10.40	5.31	1.68	1.80
1962	1.17	30.50	22.90	0.76	10.60	5.03	1.72	2.08
1963	1.28	30.70	27.00	0.81	10.80	5.09	1.81	1.91
1964	1.26	28.70	24.60	0.73	10.90	4.94	1.92	1.53
1965	1.27	27.10	22.30	0.71	11.00	5.04	1.77	1.34
1966	1.43	17.60	22.50	0.75	11.00	5.13	1.84	1.66
1967	1.32	20.40	25.00	0.82	11.20	4.94	1.81	1.46
1968	1.15	20.20	23.50	0.74	11.70	4.97	1.73	1.26
1969	1.29	19.30	25.50	0.68	11.90	4.88	1.95	1.25
1970	1.42	20.60	26.50	0.70	12.20	5.25	2.14	1.30
1971	1.34	26.60	30.00	0.85	12.80	5.35	2.00	1.45
1972	1.42	23.00	29.00	0.85	13.60	6.44	2.55	1.56
1973	2.57	46.00	35.50	1.12	15.90	14.80	3.89	3.04
1974	3.09	34.90	47.00	1.48	17.20	10.90	4.78	3.87
1975	2.66	45.80	47.00	1.51	18.60	8.81	4.28	3.38
1976	2.33	61.60	49.00	1.64	18.90	7.21	3.68	3.04
1977	2.16	49.70	49.00	1.23	19.60	9.55	3.42	2.15
1978	2.45	53.70	53.50	1.30	20.20	9.27	3.86	2.93
1979	2.82	56.46	53.50	1.55	20.90	11.60	4.55	3.86
1980	3.44	68.40	65.50	1.84	35.10	12.80	5.61	3.74
1981	2.88	50.12	63.00	1.97	26.50	10.40	4.44	3.65
1982	3.07	52.27	72.50	2.12	25.60	8.94	4.42	3.42
1983	3.39	62.61	77.50	1.78	25.30	9.97	5.20	3.38
1984	3.03	54.24	96.00	2.16	25.90	8.90	4.64	3.39
1985	2.49	51.46	68.00	1.97	25.50	7.38	3.93	2.97
1986	1.87	47.56	60.00	1.65	29.60	4.22	2.86	2.32
1987	2.17	58.73	65.00	2.00	27.00	8.07	3.18	2.36
1988*	2.71	51.39	74.00	2.42	26.80	7.24	4.49	3.39
1989	2.63	59.19	75.00	2.06	28.20	8.02	3.93	3.79
1990	2.51	63.65	67.50	1.51	41.90	7.41	4.15	2.74
1991	2.68	51.96	62.50	1.43	28.00	8.15	4.34	2.69
1992	2.41	49.12	64.00	1.66	26.90	6.17	3.62	3.18
1993	2.61	55.09	68.00	1.59	29.60	7.60	4.46	2.86
1994	2.51	70.10	69.00	1.83	28.50	7.12	4.05	3.22
1995	3.19	74.63	72.00	2.19	28.70	9.73	6.06	4.19
1996	3.19	66.35	98.00	3.43	24.80	10.80	4.83	4.98
1997	2.74	62.86	72.00	2.36	24.30	10.90	4.25	3.25
1998	2.26	57.05	89.00	1.44	24.60	9.32	3.56	2.66
1999	2.07	42.24	71.50	1.54	20.60	6.04	3.08	2.28
2000	2.18	45.90	76.00	1.60	24.60	5.82	3.28	2.52
2001	2.29	28.40	75.00	2.20	22.60	4.61	3.64	2.78
2002	2.57	40.00	77.00	1.72	18.20	4.16	4.18	3.02
2003	2.59	57.70	74.00	2.20	19.50	7.35	4.13	3.06
2004	2.60	40.20	77.00	1.91	19.20	7.96	3.99	3.34
2005	2.47	46.40	92.00	2.40	18.00	7.77	3.89	3.44
2006	3.20	46.30	131.00	2.43	18.70	10.00	5.24	4.47
2007	4.35	60.40	135.00	3.47	23.50	12.40	6.60	6.40
2008	4.82	43.80	119.00	4.00	24.00	15.70	6.91	7.58
2009**	4.05	59.20	124.00	4.70	23.90	12.50	6.05	5.25

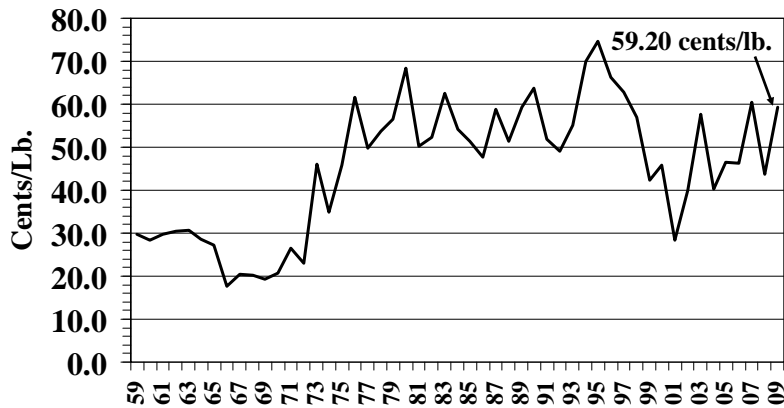
Source: Texas Ag Facts, Annual Summary, February; Texas Ag Statistics, Annual Summary, USDA/NASS/Texas Field Office Austin. Numbers revised from USDA/NASS/Quick Stats Program. \*After 1988 all hay market year average price cannot be derived from value and production. \*\*Preliminary

## Texas Corn for Grain Prices Prices Received 1959 - 2009



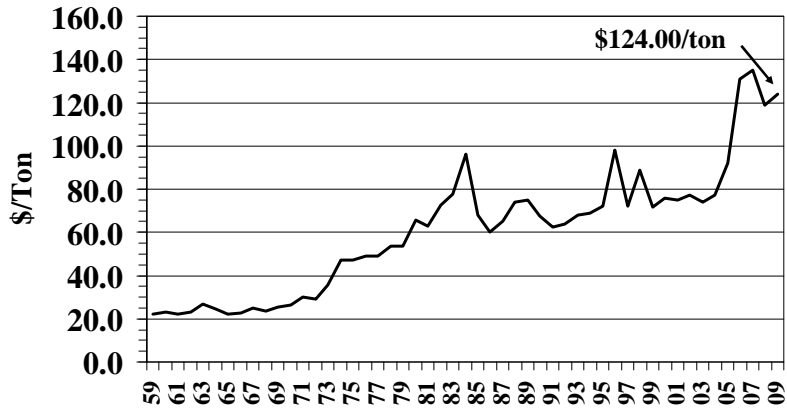
2009 Preliminary  
Note: Prices Received by Farmers

## Texas Upland Cotton Prices Prices Received 1959 - 2009



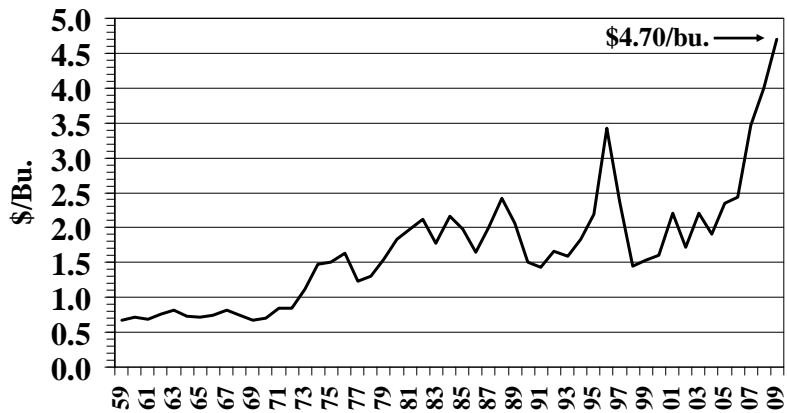
2009 Preliminary  
Note: Prices Received by Farmers

## Texas All Hay Prices Prices Received 1959 - 2009



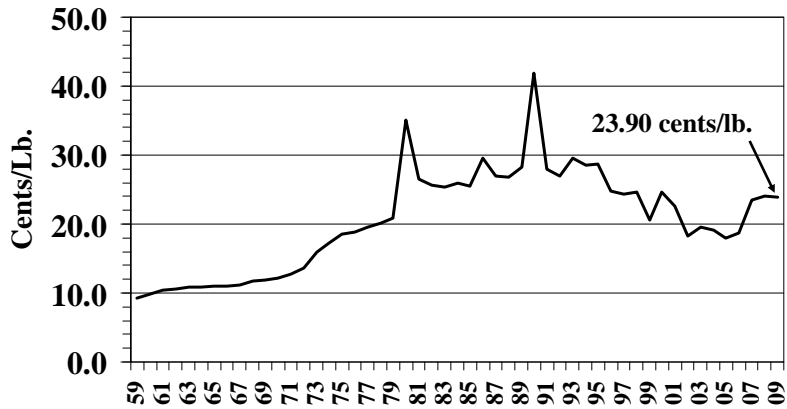
2009 Preliminary  
Note: Prices Received by Farmers

## Texas Oat Prices Prices Received 1959 - 2009



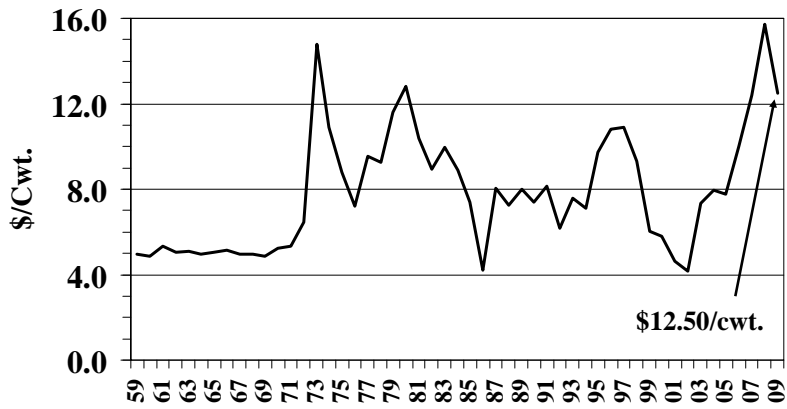
2009 Preliminary  
Note: Prices Received by Farmers

## Texas Peanut Prices Prices Received 1959 - 2009



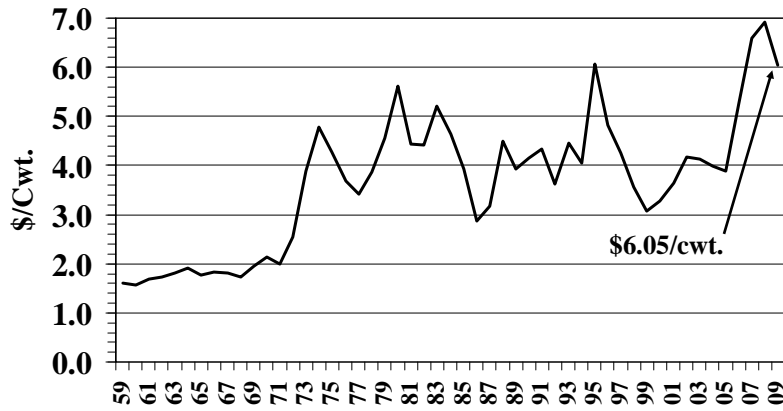
2009 Preliminary  
Note: Prices Received by Farmers

## Texas Rice Prices Prices Received 1959 - 2009



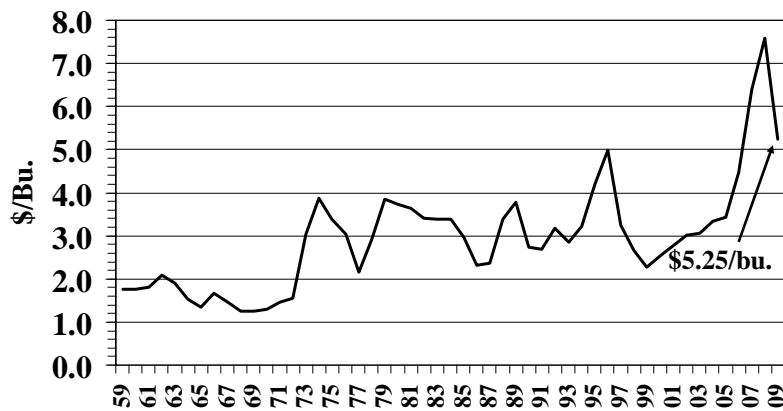
2009 Preliminary  
Note: Prices Received by Farmers

## Texas Grain Sorghum Prices Prices Received 1959 - 2009



2009 Preliminary  
Note: Prices Received by Farmers

## Texas Wheat Prices Prices Received 1959 - 2009



2009 Preliminary  
Note: Prices Received by Farmers

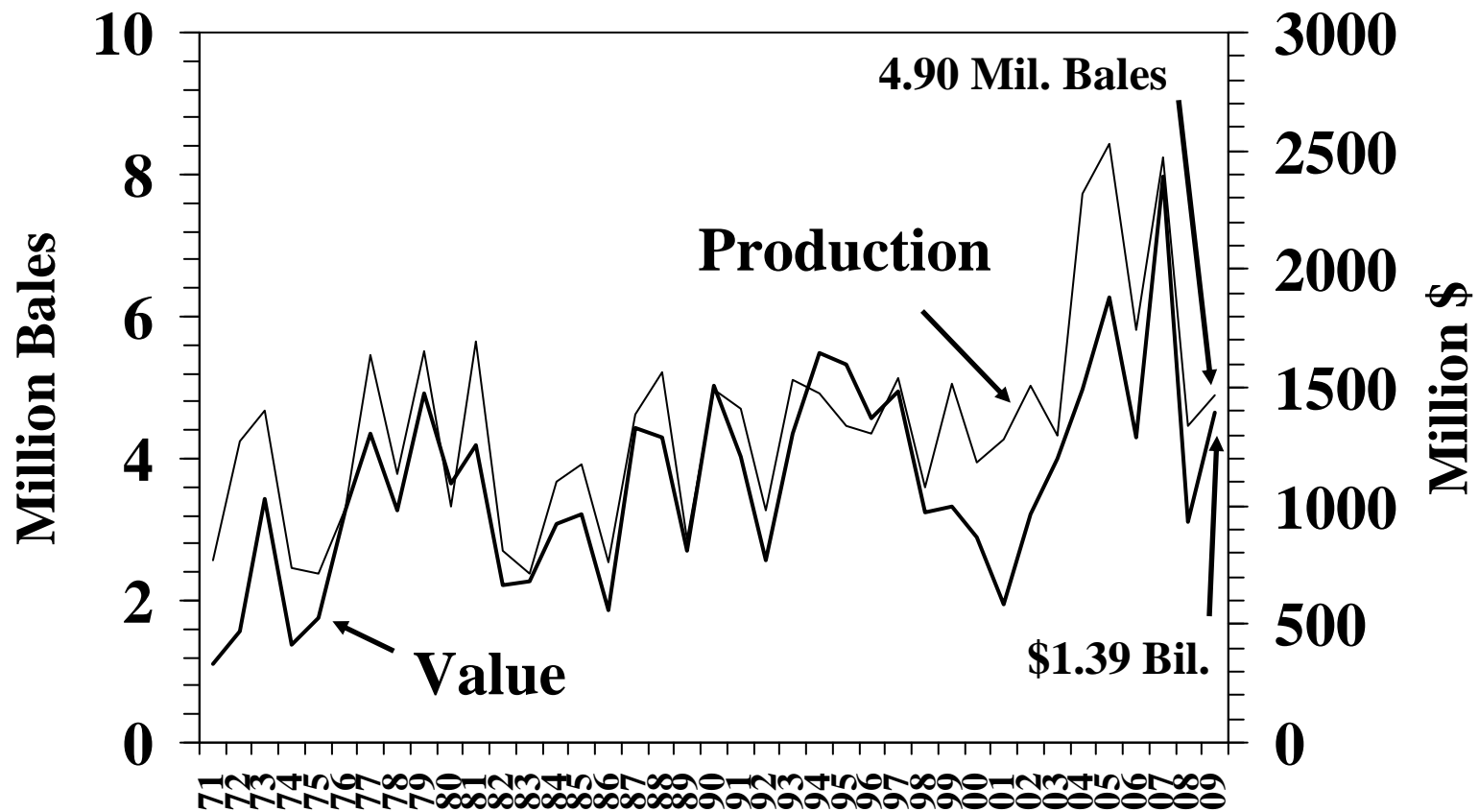
### Value of Texas Upland Cotton and Cottonseed

The following table was compiled by Texas Cottonseed Crushers from their historical records and reports of the U.S. Department of Commerce and Department of Agriculture.

Crop Year	Upland Cotton		Cottonseed	
	Production	Value	Production	Value
	000 Bales	000 \$	000 Tons	000 \$
1972 .....	4,246	468,758	1,643	79,850
1973 .....	4,673	1,031,798	1,788	167,178
1974 .....	2,462	412,434	981	116,739
1975 .....	2,382	523,659	909	81,628
1976 .....	3,307	977,814	1,271	124,558
1977 .....	5,465	1,303,730	2,089	133,696
1978 .....	3,792	977,426	1,483	166,069
1979 .....	5,515	1,474,490	2,264	262,624
1980 .....	3,320	1,091,616	1,361	161,959
1981 .....	5,645	1,259,964	2,438	207,230
1982 .....	2,700	664,848	1,122	90,882
1983 .....	2,380	677,443	1,002	162,324
1984 .....	3,680	927,360	1,563	157,863
1985 .....	3,910	968,429	1,634	102,156
1986 .....	2,535	560,945	1,053	82,118
1987 .....	4,635	1,325,981	1,915	157,971
1988 .....	5,215	1,291,651	2,131	238,672
1989 .....	2,870	812,784	1,189	141,491
1990 .....	4,965	1,506,182	1,943	225,388
1991 .....	4,710	1,211,789	1,903	134,162
1992 .....	3,265	769,495	1,346	145,368
1993 .....	5,095	1,308,396	2,147	255,493
1994 .....	4,915	1,642,003	2,111	215,322
1995 .....	4,460	1,597,037	1,828	201,080
1996 .....	4,345	1,368,154	1,784	230,136
1997 .....	5,140	1,482,787	1,983	226,062
1998 .....	3,600	969,408	1,558	204,098
1999 .....	5,050	993,840	1,987	160,947
2000 .....	3,940	868,061	1,589	162,078
2001 .....	4,260	580,723	1,724	159,470
2002 .....	5,040	967,680	1,855	191,065
2003 .....	4,330	1,199,237	1,616	202,000
2004 .....	7,740	1,493,510	2,895	301,080
2005 .....	8,440	1,879,757	2,869	289,739
2006 .....	5,800	1,288,992	2,066	243,776
2007 .....	8,250	2,391,180	2,861	443,409
2008 .....	4,450	935,568	1,547	351,192
2009 .....	4,900	1,392,384	1,710	266,760

Source: "Texas Agricultural Facts", Crop Value Annual Summary, February 2010 and "Texas Ag Statistics", Texas Field Office, Austin, Texas, annual summary.

# Production and Value of Texas Upland Cotton, 1972 - 2009





# Production and Value of Texas Upland Cottonseed, 1972 - 2009

