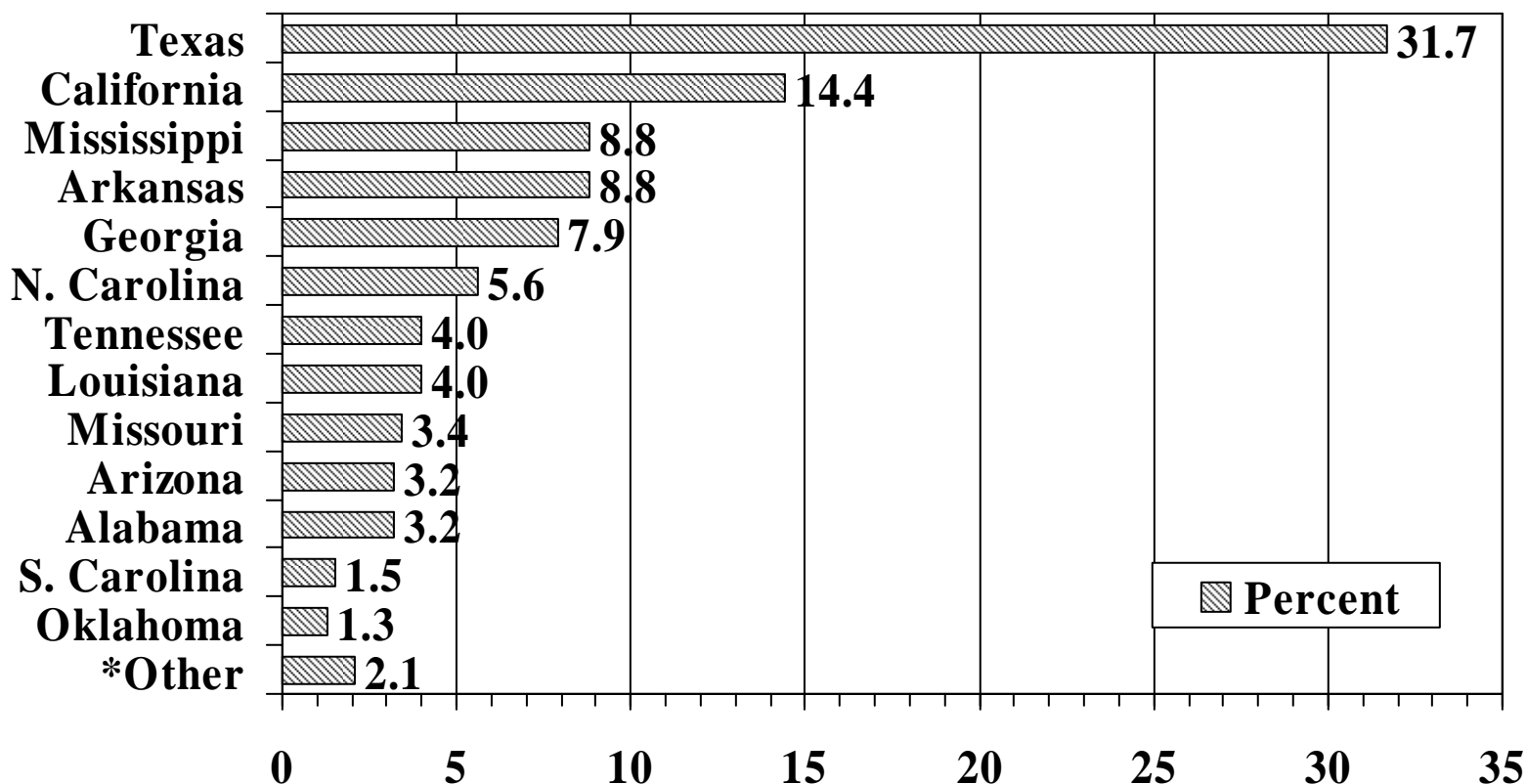


# Cotton: States' Percent of Total Receipts, 2005



\* Kansas, Florida, New Mexico, and Virginia

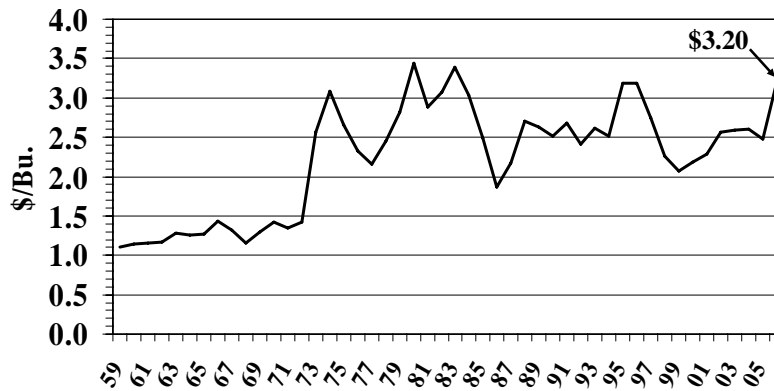
**Texas Marketing Year Average Prices Received by Farmers, Crops, 1960 - 2006**

Year	All Corn	Upland Cotton	All Hay	Oats	Peanuts	Rice	Grain Sorghum	Wheat
	\$/bu.	¢/lb.	\$/ton	\$/bu.	¢/lb.	\$/cwt.	\$/cwt.	\$/bu.
1960	1.14	28.30	22.90	0.71	9.90	4.85	1.56	1.76
1961	1.16	29.80	22.10	0.69	10.40	5.31	1.68	1.80
1962	1.17	30.50	22.90	0.76	10.60	5.03	1.72	2.08
1963	1.28	30.70	27.00	0.81	10.80	5.09	1.81	1.91
1964	1.26	28.70	24.60	0.73	10.90	4.94	1.92	1.53
1965	1.27	27.10	22.30	0.71	11.00	5.04	1.77	1.34
1966	1.43	17.60	22.50	0.75	11.00	5.13	1.84	1.66
1967	1.32	20.40	25.00	0.82	11.20	4.94	1.81	1.46
1968	1.15	20.20	23.50	0.74	11.70	4.97	1.73	1.26
1969	1.29	19.30	25.50	0.68	11.90	4.88	1.95	1.25
1970	1.42	20.60	26.50	0.70	12.20	5.25	2.14	1.30
1971	1.34	26.60	30.00	0.85	12.80	5.35	2.00	1.45
1972	1.42	23.00	29.00	0.85	13.60	6.44	2.55	1.56
1973	2.57	46.00	35.50	1.12	15.90	14.80	3.89	3.04
1974	3.09	34.90	47.00	1.48	17.20	10.90	4.78	3.87
1975	2.66	45.80	47.00	1.51	18.60	8.81	4.28	3.38
1976	2.33	61.60	49.00	1.64	18.90	7.21	3.68	3.04
1977	2.16	49.70	49.00	1.23	19.60	9.55	3.42	2.15
1978	2.45	53.70	53.50	1.30	20.20	9.27	3.86	2.93
1979	2.82	56.46	53.50	1.55	20.90	11.60	4.55	3.86
1980	3.44	68.40	65.50	1.84	35.10	12.80	5.61	3.74
1981	2.88	50.12	63.00	1.97	26.50	10.40	4.44	3.65
1982	3.07	52.27	72.50	2.12	25.60	8.94	4.42	3.42
1983	3.39	62.61	77.50	1.78	25.30	9.97	5.20	3.38
1984	3.03	54.24	96.00	2.16	25.90	8.90	4.64	3.39
1985	2.49	51.46	68.00	1.97	25.50	7.38	3.93	2.97
1986	1.87	47.56	60.00	1.65	29.60	4.22	2.86	2.32
1987	2.17	58.73	65.00	2.00	27.00	8.07	3.18	2.36
1988	2.71	51.39	74.00	2.42	26.80	7.24	4.49	3.39
1989	2.63	59.19	75.00	2.06	28.20	8.02	3.93	3.79
1990	2.51	63.65	67.50	1.51	41.90	7.41	4.15	2.74
1991	2.68	51.96	62.50	1.43	28.00	8.15	4.34	2.69
1992	2.41	49.12	64.00	1.66	26.90	6.17	3.62	3.18
1993	2.61	55.09	68.00	1.59	29.60	7.60	4.46	2.86
1994	2.51	70.10	69.00	1.83	28.50	7.12	4.05	3.22
1995	3.19	74.63	72.00	2.19	28.70	9.73	6.06	4.19
1996	3.19	66.35	98.00	3.43	24.80	10.80	4.83	4.98
1997	2.74	62.86	72.00	2.36	24.30	10.90	4.25	3.25
1998	2.26	57.05	89.00	1.44	24.60	9.32	3.56	2.66
1999	2.07	42.24	71.50	1.54	20.60	6.04	3.08	2.28
2000	2.18	45.90	76.00	1.60	24.60	5.82	3.28	2.52
2001	2.29	28.40	75.00	2.20	22.60	4.61	3.64	2.78
2002	2.57	40.00	77.00	1.72	18.20	4.16	4.18	3.02
2003	2.59	57.70	74.00	2.20	19.50	7.35	4.13	3.06
2004	2.60	40.20	77.00	1.91	19.20	7.96	3.99	3.34
2005	2.47	46.40	92.00	2.40	18.00	7.77	3.89	3.44
2006***	3.20	46.50	130.00	2.30	17.90	9.90	5.00	4.55

Source: Texas Ag Facts, Annual Summary, various issues in February; Texas Ag Statistics, 2005, USDA/TASS, Austin. Numbers revised from USDA/NASS/Quick Stats Program. \*\*After 1988 all hay market year average price cannot be derived from value and production.

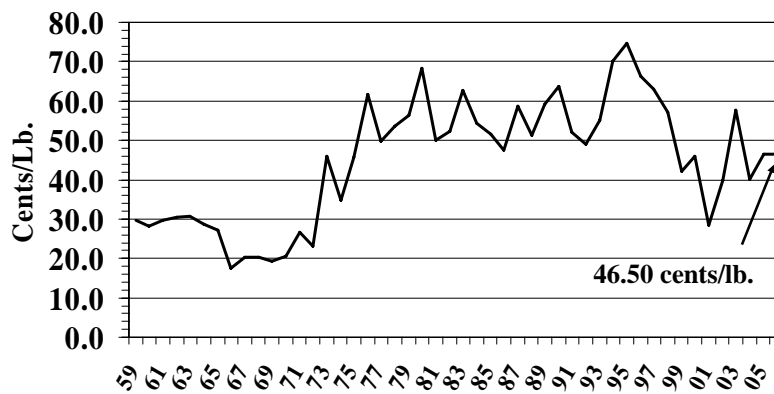
\*\*\*Preliminary

## Texas All Corn Prices Prices Received 1959 - 2006



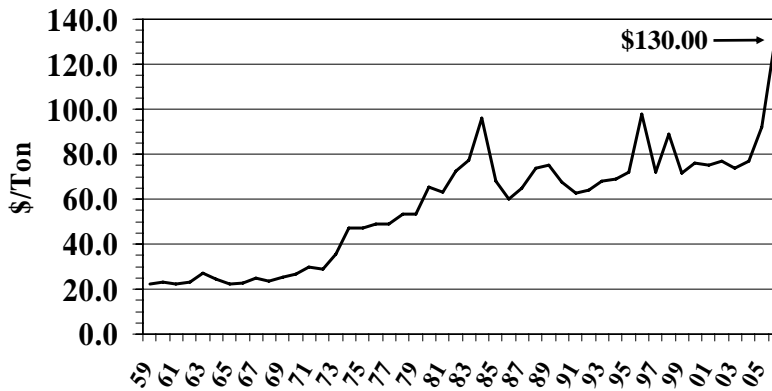
2006 Preliminary  
Note: Prices Received by Farmers

## Texas All Cotton Prices Prices Received 1959 - 2006



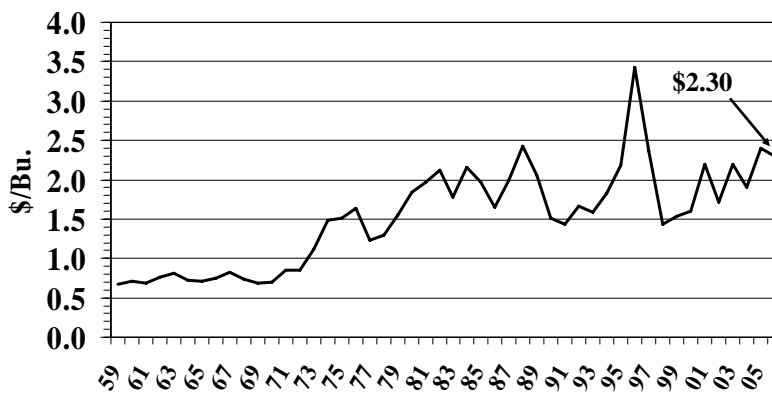
2006 Preliminary  
Note: Prices Received by Farmers

## Texas All Hay Prices Prices Received 1959 - 2006



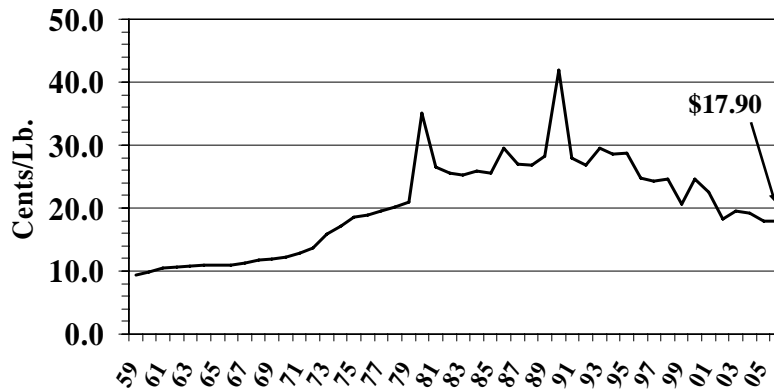
2006 Preliminary  
Note: Prices Received by Farmers

## Texas Oat Prices Prices Received 1959 - 2006



2006 Preliminary  
Note: Prices Received by Farmers

## Texas Peanut Prices Prices Received 1959 - 2006



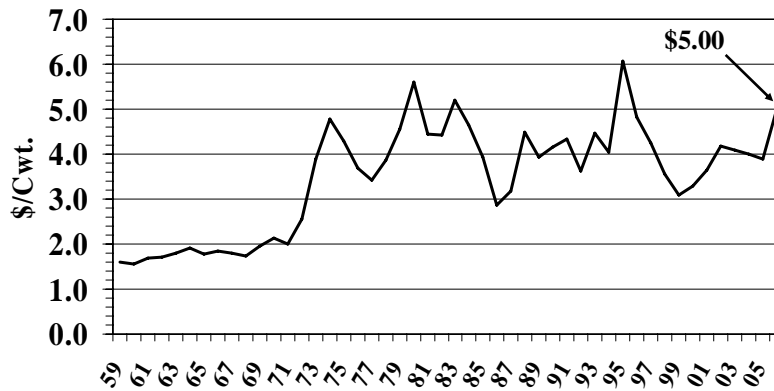
2006 Preliminary  
Note: Prices Received by Farmers

## Texas Rice Prices Prices Received 1959 - 2006



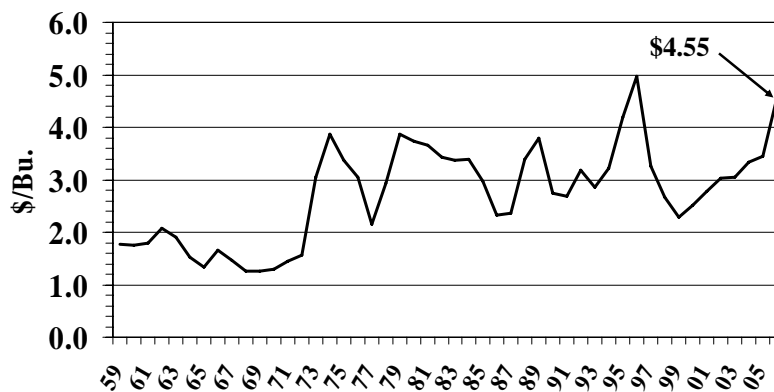
2006 Preliminary  
Note: Prices Received by Farmers

## U.S. Grain Sorghum Prices Prices Received 1959 - 2006



2006 Preliminary  
Note: Prices Received by Farmers

## U.S. Wheat Prices Prices Received 1959 - 2006



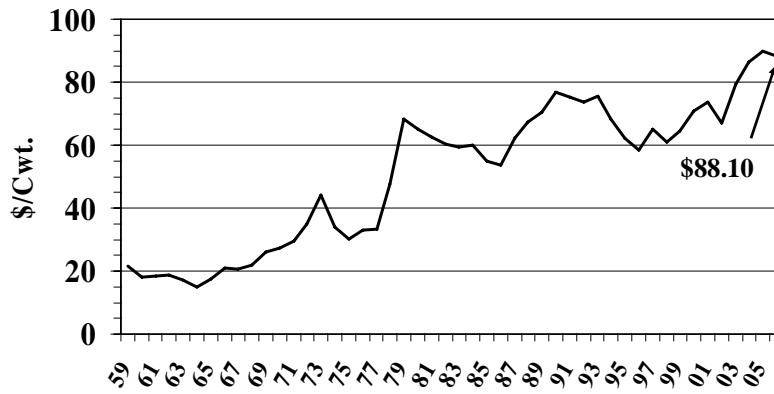
2006 Preliminary  
Note: Prices Received by Farmers

**Texas Marketing Year Average Prices Received by Farmers, Livestock and Livestock Products, 1960-2006**

Year	Beef Cattle	Calves	Hogs	Sheep	Lambs	Commercial Broilers	Market Eggs	Milk (Wholesale)
	-----\$/100 lbs -----					¢/lb	¢/doz.	\$/100 lbs.
1960	18.10	21.50	14.70	7.70	15.80	16.70	34.00	5.27
1961	18.40	23.10	16.40	6.80	13.30	13.60	34.40	5.17
1962	18.60	24.30	16.30	7.40	14.30	15.10	35.00	4.91
1963	17.20	23.10	15.10	7.50	15.10	14.40	36.40	5.10
1964	14.90	18.60	14.80	7.70	16.80	14.00	35.90	5.10
1965	17.50	20.90	18.80	8.20	20.40	14.90	36.40	5.03
1966	21.10	24.60	23.30	9.50	20.80	15.20	40.70	5.91
1967	20.70	24.80	19.00	7.80	20.70	13.30	32.60	6.02
1968	21.80	26.20	18.10	9.00	22.50	14.40	36.90	6.35
1969	26.00	31.00	21.60	11.30	26.40	15.50	45.00	6.74
1970	27.30	33.20	22.50	11.20	24.80	13.70	42.10	6.86
1971	29.60	35.50	16.60	8.50	25.30	14.10	33.90	6.95
1972	34.90	44.50	24.00	19.60	29.40	14.20	33.70	7.17
1973	44.00	57.70	37.90	16.40	35.20	22.80	55.50	8.18
1974	34.00	33.70	33.30	14.20	35.70	21.30	56.20	9.22
1975	30.30	24.80	43.70	15.90	41.20	27.80	59.60	9.45
1976	32.90	33.10	41.50	16.70	50.30	25.00	66.60	10.60
1977	33.20	34.70	38.00	16.30	52.20	25.30	62.30	10.70
1978	47.70	60.10	43.80	27.20	67.60	28.00	60.80	11.60
1979	68.20	88.30	39.70	29.40	69.10	27.50	65.90	13.10
1980	65.20	73.60	35.90	22.70	66.70	29.50	64.90	13.90
1981	62.40	62.50	41.70	23.20	56.80	30.00	71.60	14.80
1982	60.40	59.40	49.60	22.40	53.60	29.00	69.00	14.60
1983	59.30	62.50	45.20	15.70	54.40	30.00	70.00	14.50
1984	60.00	60.70	45.50	18.30	59.70	35.00	82.00	14.30
1985	55.00	62.20	43.40	30.10	69.60	32.00	65.00	13.80
1986	53.50	60.60	47.30	27.30	71.60	36.00	70.20	13.60
1987	62.10	78.70	50.60	33.00	84.80	31.00	67.20	13.70
1988	67.20	86.90	41.30	28.80	75.10	35.00	56.90	13.20
1989	70.40	89.00	39.90	30.00	71.10	38.50	74.50	14.30
1990	76.80	94.30	48.20	29.80	58.90	35.00	66.80	14.70
1991	75.20	96.20	45.10	27.40	52.70	34.00	62.50	12.70
1992	73.70	85.80	36.40	29.30	62.00	35.00	51.10	13.70
1993	75.60	95.20	39.90	34.40	64.90	37.50	56.90	13.30
1994	68.10	87.40	35.10	35.70	64.80	39.50	49.60	13.40
1995	62.20	71.80	35.50	33.40	78.50	37.00	54.10	13.00
1996	58.30	54.70	45.90	34.20	87.80	38.50	72.20	15.10
1997	65.00	86.30	47.40	44.70	90.50	37.00	59.50	13.70
1998	61.10	84.00	30.70	37.10	73.30	39.00	53.10	15.70
1999	64.60	89.50	27.50	38.90	76.50	37.00	44.00	15.00
2000	70.70	107.00	36.60	41.10	81.20	34.00	43.10	13.40
2001	73.50	107.00	39.10	42.70	74.80	39.00	44.90	15.80
2002	67.10	95.50	28.70	35.30	75.90	31.00	43.30	12.90
2003	79.50	102.00	33.60	39.60	97.10	35.00	55.90	13.00
2004	86.50	123.00	44.90	43.40	110.00	45.00	53.20	16.30
2005	89.90	136.00	45.40	52.10	113.00	44.00	33.40	15.30
2006*	88.10	132.00	40.80	37.10	92.40	1/	36.90	13.30

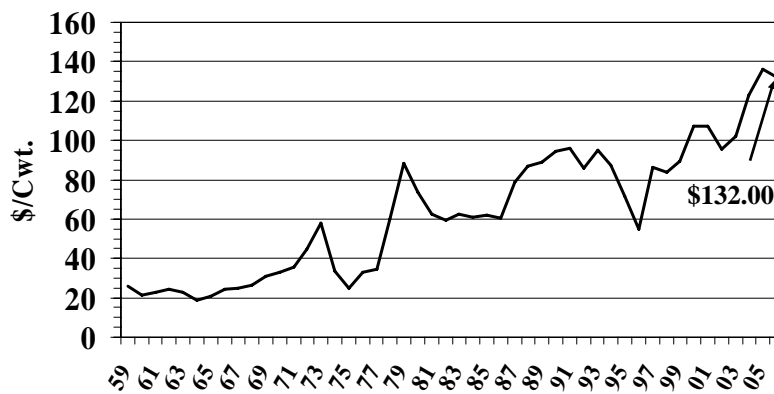
Source: Texas Agricultural Statistics, 2005; Texas Ag Facts, bimonthly issues, TASS/Austin. \*Preliminary 1/ Monthly prices discontinued.

## Texas Beef Cattle Prices Prices Received 1959 - 2006



2006 Preliminary  
Note: Prices Received by Farmers

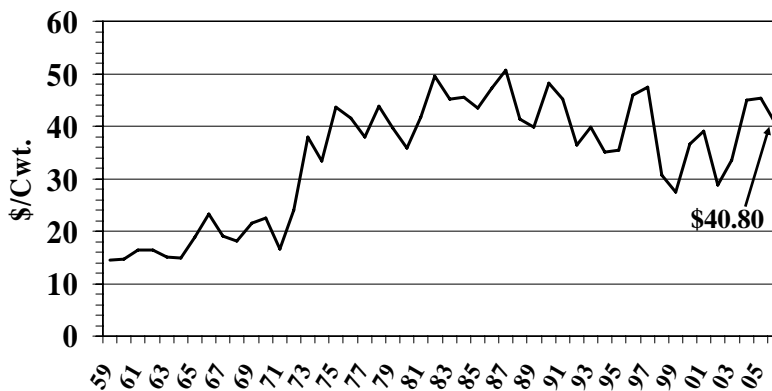
## Texas Calf Prices Prices Received 1959 - 2006



2006 Preliminary  
Note: Prices Received by Farmers



## Texas Hog Prices Prices Received 1959 - 2006



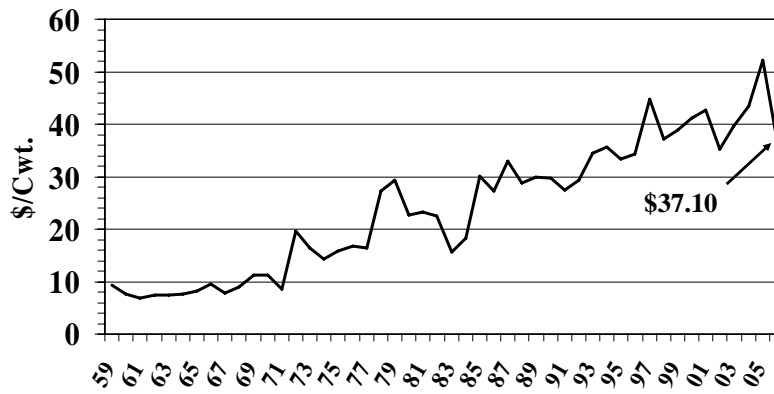
2006 Preliminary  
Note: Prices Received by Farmers

## Texas Commercial Broiler Prices Prices Received 1959 - 2005



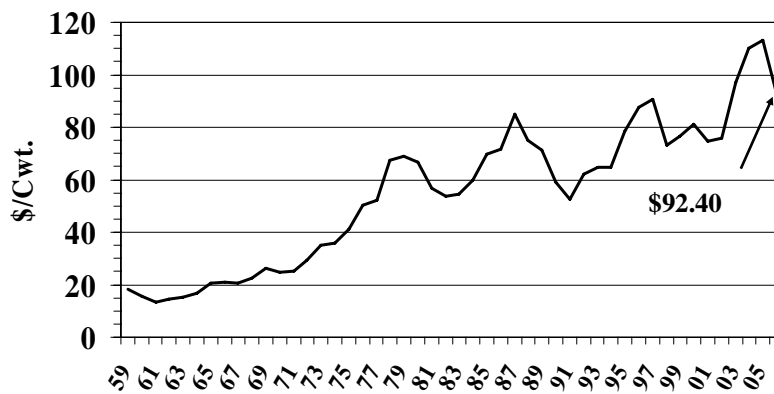
Monthly prices discontinued in 1999 Note:  
Prices Received by Farmers

## Texas Sheep Prices Prices Received 1959 - 2006



2006 Preliminary  
Note: Prices Received by Farmers

## Texas Lamb Prices Prices Received 1959 - 2006



2006 Preliminary  
Note: Prices Received by Farmers